

Converting Colors

XYZ(65.7442, 63.9725, 66.6404)

Have a look what the booklet for
XYZ(65.7442, 63.9725, 66.6404)
contains.

XYZ(65.7442, 63.9725, 66.6404)	3
<i>Conversions</i>	4
<i>Details</i>	6
<i>Harmonies</i>	12
<i>Previews</i>	24
<i>Color Blindness Simulation</i>	28
<i>CSS Examples</i>	31

Color

**XYZ(65.7442, 63.9725,
66.6404)**

Conversions

Conversions Part 1

Format	Color
Hex	E9CACD
RGB	233, 202, 205
RGB Percent	91%, 79%, 80%
CMY	0.0863, 0.2078, 0.1961
CMYK	0.00, 0.13, 0.12, 0.09
HSL	354°, 41%, 85%
HSV	354°, 13%, 91%
XYZ	65.7442, 63.9725, 66.6404
YIQ	211.6110, 17.5130, 7.5050

Conversions

Conversions Part 2

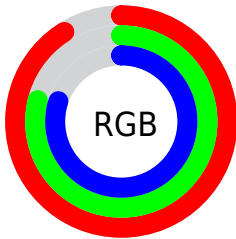
Format	Color
R _Y B	233, 202, 205
Decimal	15321805
CIE Lab	83.95, 11.37, 2.52
CIE LCh	84, 11.642, 12.516
Yxy	63.9725, 0.3348, 0.3258
Android (android.graphics.Color)	4293511885 (0xFFE9CACD)
YUV	211.6110, -3.2592, 18.7582
Hunter-Lab	79.9828, 6.7534, 6.5885

Details

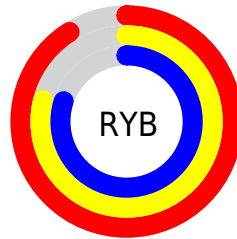
The XYZ color **65.7442, 63.9725, 66.6404** is a light color, and the websafe version is hex **FFCCCC**. A complement of this color would be **67.7814, 76.5490, 86.0696**, and the grayscale version is **62.3354, 65.5817, 71.4185**.

A 20% lighter version of the original color is **95.0500, 100.0000, 108.9000**, and **34.3073, 32.7613, 33.7935** is the 20% darker color. If you saturate the color by 10%, you get **58.3125, 52.9048, 52.4599**, and if you desaturate by 10%, it is **74.3467, 76.8334, 82.8990**.

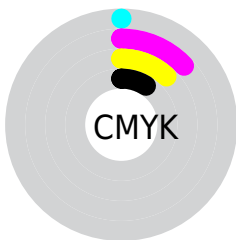
Distribution



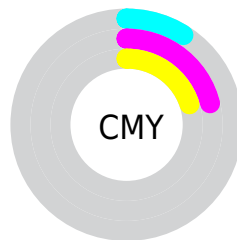
- Red (91%)
- Green (79%)
- Blue (80%)



- Red (91%)
- Yellow (79%)
- Blue (80%)



- Cyan (0%)
- Magenta (13%)
- Yellow (12%)
- Black (9%)



- Cyan (9%)
- Magenta (21%)
- Yellow (20%)

Brightness & Saturation Gradients

These gradients show how the XYZ color 65.7442, 63.9725, 66.6404 changes by changing the brightness by 10 percent. The first figure shows a shift by +10% for each color and the second figure -10%.

Similar to the brightness gradients but the following saturation gradients show a change of the XYZ color 65.7442, 63.9725, 66.6404 by changing the saturation by 10% instead.

65.7442, 63.9725,
66.6404

65.7442, 63.9725,
66.6404

434.9646,
439.0903, 467.1303

48.3317, 46.6284,
48.3327

112.1789,
110.5713, 116.0407

34.3020, 32.7420,
33.7286

141.9318,
140.5949, 147.9704

23.2897, 21.9289,
22.4095

176.5289,
175.6136, 185.2779

14.9294, 13.8046,
13.9569

216.3355,
216.0121, 228.3816

8.8559, 7.9849,
7.9523

261.7170,
262.1746, 277.7002

4.7036, 4.0853,
3.9771

313.0388,

2.1074, 1.7214,

314.4855, 333.6522

1.6128

370.6662,
373.3293, 396.6560

■ 0.6932, 0.4374,
0.2999

■ 0.0000, 0.0000,
0.0000

■ 65.7442, 63.9725,
66.6404

■ 65.7442, 63.9725,
66.6404

■ 58.3125, 52.9048,
52.4599

■ 74.3467, 76.8334,
82.8990

■ 51.9958, 43.5426,
40.2698

■ 84.1621, 91.5532,
101.3104

■ 46.7418, 35.8036,
29.9821

■ 87.4145, 96.0638,
108.5427

■ 42.4919, 29.5954,
21.5006

■ 39.1816, 24.8161,
14.7208

■ 36.7392, 21.3517,
9.5273

■ 35.0821, 19.0707,
5.7903

■ 34.1119, 17.8139,
3.3594

■ 33.7544, 17.3837,
2.3619

Harmonies

Analogous

The Analogous color harmony consists of three colors that are next to each other on the color wheel.



65.6278, 63.9725, 73.9833



65.7442, 63.9725, 66.6404



64.5102, 63.9725, 60.5438

Triad

The Triadic color harmony groups three colors that are evenly spaced from another and form a triangle on the color wheel.



65.7442, 63.9725, 66.6404



57.5332, 63.9725, 59.7591



59.3350, 63.9725, 84.0065

Complementary

The Complementary color scheme is a pair of colors which are on the opposite of each other on the color wheel.



65.7442, 63.9725, 66.6404



67.7814, 76.5490, 86.0696

Split Complementary

Split-complementary colors differ from the complementary color scheme. The scheme consists of three colors, the original color and two neighbors of the complement color.



57.2425, 63.9725, 79.6377



65.7442, 63.9725, 66.6404



56.2225, 63.9725, 65.4993

Square

The Square scheme is like the rectangle color scheme, but the four colors are evenly spaced on the color wheel.



65.7442, 63.9725, 66.6404



59.7419, 63.9725, 56.7624



56.1176, 63.9725, 72.7595



61.8784, 63.9725, 84.3659

Rectangle

The Rectangle color scheme consists of four colors that form a rectangle on the color wheel.



65.7442, 63.9725, 66.6404



63.1073, 63.9725, 57.8668



56.1176, 63.9725, 72.7595



58.5573, 63.9725, 82.9447

Sweetspot

The Sweet Spot groups the original color and five complimentary colors.



65.7460, 63.9753, 66.6418



90.4336, 93.0845, 100.2173



68.4314, 64.9336, 86.0181



19.1765, 19.6544, 21.1113



0.0000, 0.0000, 0.0000



20.3446, 21.4041, 23.3091

Same Dimension

The Same Dimension uses a secret algorithm to generate beautiful new colors.



65.7460, 63.9753, 66.6418



78.0109, 74.5239, 76.7009



68.4147, 69.8860, 65.7642



15.1246, 15.0777, 15.9415



19.1729, 9.8719, 1.4459



1.5256, 0.7832, 0.2194

Inverse Universe

The Inverse Universe completely reimagines the original color for something new.



65.7460, 63.9753, 66.6418



78.0109, 74.5239, 76.7009



64.8184, 69.9439, 87.1756



15.1246, 15.0777, 15.9415



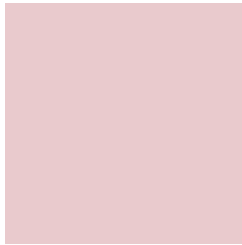
19.1729, 9.8719, 1.4459



1.5256, 0.7832, 0.2194

Previews

White Background



This preview shows how the XYZ color 65.7442, 63.9725, 66.6404 looks on a white background.

Color Contrast Check

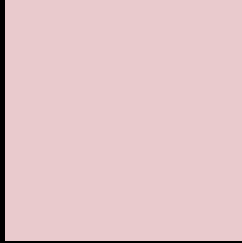
Large Text (above 18pt) WCAG AA × Fail

Any Text WCAG AA × Fail

Large Text (above 18pt) WCAG AAA × Fail

Any Text WCAG AAA × Fail

Black Background



This preview shows how the XYZ color 65.7442, 63.9725, 66.6404 looks on a black background.

Color Contrast Check

Large Text (above 18pt) WCAG AA ✓ Pass

Any Text WCAG AA ✓ Pass

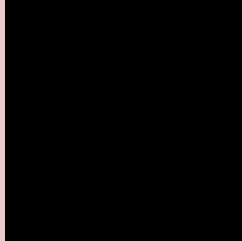
Large Text (above 18pt) WCAG AAA ✓ Pass

Any Text WCAG AAA ✓ Pass

If you want to check with other color combinations, try the [Color Contrast Checker](#).

XYZ 65.7442, 63.9725, 66.6404

Background



This preview shows how black text looks on a background with the XYZ color 65.7442, 63.9725, 66.6404.



This preview shows how white text looks on a background with the XYZ color 65.7442, 63.9725,

Color Blindness Simulation

Color vision deficiency is a very complex topic, and I could not describe the different causes any better than Wikipedia does, so if you want to learn more, you should check out their [article about color blindness](#).

Dichromacy



Original Color

65.7442, 63.9725, 66.6404

Protanopia

61.5051, 63.8613, 69.4064

Deuteranopia

65.3304, 64.1086, 66.6885



Tritanopia

66.9806, 63.7588, 73.7422

Trichromacy



Original Color

65.7442, 63.9725, 66.6404

Protanomaly

62.9717, 63.9123, 68.6919

Deuteranomaly

65.6541, 64.2755, 66.7037

Tritanomaly

66.7020, 64.0192, 71.1287

Monochromacy



Original Color

65.7442, 63.9725, 66.6404

Achromatopsia

62.5785, 65.8375, 71.6970

Achromatomaly

63.5797, 64.9308, 69.5035

CSS Examples

Text

The CSS property to change the color of the text to XYZ 65.7442, 63.9725, 66.6404 is called "color". The color property can be set on classes, ids or directly on the HTML element.

This example shows how text in the color `rgb(233, 202, 205)` looks like.

```
.text, #text, p{  
    color:rgb(233, 202, 205)  
}
```

If you want to add a text shadow in that color use the text-shadow property, you can generate a text shadow directly with our [CSS Text Shadow Generator](#).

Here you see how black text with a 4 pixel rgb(233, 202, 205) colored shadow looks like.

```
.shadow{ text-shadow: 4px 4px 2px rgb(233, 202, 205) }
```

Border

The CSS property to change the border of an element to XYZ 65.7442, 63.9725, 66.6404 is called "border". The border property can be set on classes, ids or directly on the HTML element.

This example shows the color as border, it can be applied via the CSS property "border" or "border-color".

```
.border, #border, table{ border:4px solid rgb(233, 202, 205) }
```


If only the border color should be changed use the property `border-color`.

```
.border{ border-color:rgb(233, 202, 205) }
```

If you want to add a box shadow in that color use:

Here you see how a box with a 4 pixel `rgb(233, 202, 205)` colored shadow looks like.

```
.boxshadow{ -moz-box-shadow:4px 4px 4px  
4px rgb(233, 202, 205); -webkit-box-  
shadow:4px 4px 4px 4px rgb(233, 202, 205);  
box-shadow:4px 4px 4px 4px rgb(233, 202,  
205) }
```

Background

The CSS property to change the background color of an element to XYZ 65.7442, 63.9725, 66.6404 is called "background". The background property can be set on classes, ids or directly on the HTML element.

```
.background, #background, body{  
background: rgb(233, 202, 205) }
```

If only the background color should be changed can be used:

```
.background{ background-color: rgb(233,  
202, 205) }
```

This example shows the color as background, it is applied via the CSS property "background".

To optimize and compress your CSS code, you can use our [online CSS compressor and optimizer](#) based on csstidy. If you want to create a linear or radial gradient as background or border, check our [CSS Gradient Generator](#).

Hey! You found this booklet interesting? Support Converting Colors with the new Membership Option!

The pro membership hides all ads, plus gives you double the colors in the color bucket, and more awesome pro features!

[Learn more, Memberships starting at \\$2.50/m!](#)

**Follow me
on Twitter!**

@ConvertingColor