

Converting Colors

XYZ(65.7679, 66.9053, 64.0310)

Have a look what the booklet for
XYZ(65.7679, 66.9053, 64.0310)
contains.

XYZ(65.7850, 66.9213, 64.0934)	3
<i>Conversions</i>	4
<i>Details</i>	6
<i>Harmonies</i>	12
<i>Previews</i>	24
<i>Color Blindness Simulation</i>	28
<i>CSS Examples</i>	31

Color

**XYZ(65.7850, 66.9213,
64.0934)**

Conversions

Conversions Part 1

Format	Color
Hex	E5D2C8
RGB	229, 210, 200
RGB Percent	90%, 82%, 78%
CMY	0.1020, 0.1764, 0.2157
CMYK	0.00, 0.08, 0.13, 0.10
HSL	21°, 36%, 84%
HSV	21°, 13%, 90%
XYZ	65.7850, 66.9213, 64.0934
YIQ	214.5410, 14.5340, 0.9180

Conversions

Conversions Part 2

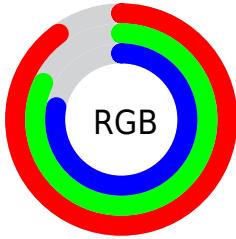
Format	Color
R _Y B	229, 215, 200
Decimal	15061704
CIE Lab	85.46, 4.94, 7.32
CIE LCh	85, 8.831, 56.014
Yxy	66.9213, 0.3343, 0.3400
Android (android.graphics.Color)	4293251784 (0xFFE5D2C8)
YUV	214.5410, -7.1687, 12.6805
Hunter-Lab	81.8054, 0.3838, 10.8109

Details

The XYZ color **65.7850, 66.9213, 64.0934** is a light color, and the websafe version is hex **CCCCCC**. A complement of this color would be **63.2935, 68.5982, 84.0343**, and the grayscale version is **64.3226, 67.6724, 73.6952**.

A 20% lighter version of the original color is **95.0500, 100.0000, 108.9000**, and **34.3104, 34.7365, 32.0906** is the 20% darker color. If you saturate the color by 10%, you get **59.7756, 58.8691, 49.8603**, and if you desaturate by 10%, it is **72.5461, 75.8341, 80.5563**.

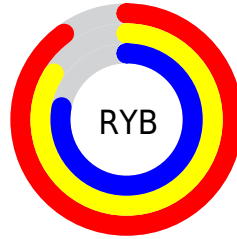
Distribution



Red (90%)

Green (82%)

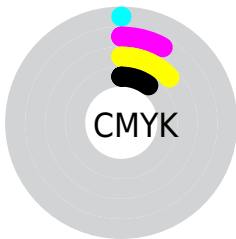
Blue (78%)



Red (90%)

Yellow (84%)

Blue (78%)

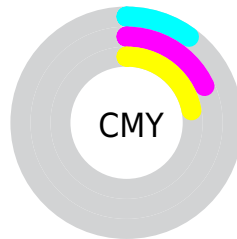


Cyan (0%)

Magenta (8%)

Yellow (13%)

Black (10%)



Cyan (10%)

Magenta (18%)

Yellow (22%)

Brightness & Saturation Gradients

These gradients show how the XYZ color 65.7850, 66.9213, 64.0934 changes by changing the brightness by 10 percent. The first figure shows a shift by +10% for each color and the second figure -10%.

Similar to the brightness gradients but the following saturation gradients show a change of the XYZ color 65.7850, 66.9213, 64.0934 by changing the saturation by 10% instead.

65.7850, 66.9213,
64.0934

65.7850, 66.9213,
64.0934

435.1083,
449.6646, 457.7436

48.3650, 49.0207,
46.2797

112.2371,
114.8076, 112.3462

34.3284, 34.6359,
32.1163

141.9999,
145.5621, 143.6223

23.3101, 23.3825,
21.1848

176.6077,
181.3700, 180.2230

14.9446, 14.8762,
13.0666

216.4258,
222.6158, 222.5668

8.8666, 8.7326,
7.3432

261.8195,
269.6837, 271.0722

4.7107, 4.5672,
3.5959

313.1543,

2.1115, 1.9956,

322.9582, 326.1578

1.4064

370.7954,
382.8237, 388.2420

■ 0.6955, 0.6049,
0.1467

■ 0.0000, 0.0000,
0.0000

■ 65.7850, 66.9213,
64.0934

■ 65.7850, 66.9213,
64.0934

■ 59.7756, 58.8691,
49.8603

■ 72.5461, 75.8341,
80.5563

■ 54.4852, 51.6426,
37.7562

■ 80.0793, 85.6234,
99.3356

■ 49.8866, 45.2171,
27.6784

■ 86.1234, 95.3982,
108.4822

■ 45.9487, 39.5637,
19.5143

■ 42.6377, 34.6513,
13.1402

■ 39.9165, 30.4466,
8.4173

■ 37.7433, 26.9134,
5.1864

■ 36.0695, 24.0110,
3.2557

■ 35.1093, 22.2500,
2.4442

Harmonies

Analogous

The Analogous color harmony consists of three colors that are next to each other on the color wheel.



67.1327, 66.9213, 68.1323



65.7850, 66.9213, 64.0934



63.8749, 66.9213, 62.4024

Triad

The Triadic color harmony groups three colors that are evenly spaced from another and form a triangle on the color wheel.



65.7850, 66.9213, 64.0934



59.8397, 66.9213, 72.1015



65.3117, 66.9213, 83.2399

Complementary

The Complementary color scheme is a pair of colors which are on the opposite of each other on the color wheel.



65.7850, 66.9213, 64.0934



63.2935, 68.5982, 84.0343

Split Complementary

Split-complementary colors differ from the complementary color scheme. The scheme consists of three colors, the original color and two neighbors of the complement color.



63.3392, 66.9213, 84.4382



65.7850, 66.9213, 64.0934



60.2063, 66.9213, 77.8139

Square

The Square scheme is like the rectangle color scheme, but the four colors are evenly spaced on the color wheel.



65.7850, 66.9213, 64.0934



60.4649, 66.9213, 66.8697



61.4770, 66.9213, 82.4045



66.8555, 66.9213, 79.2103

Rectangle

The Rectangle color scheme consists of four colors that form a rectangle on the color wheel.



65.7850, 66.9213, 64.0934



62.5496, 66.9213, 62.7652



61.4770, 66.9213, 82.4045



64.6756, 66.9213, 83.9960

Sweetspot

The Sweet Spot groups the original color and five complimentary colors.



65.7868, 66.9243, 64.0948



91.3564, 95.1713, 99.7811



65.7983, 63.0995, 75.9604



19.4092, 20.1806, 21.0016



0.0000, 0.0000, 0.0000



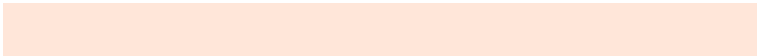
20.3446, 21.4041, 23.3091

Same Dimension

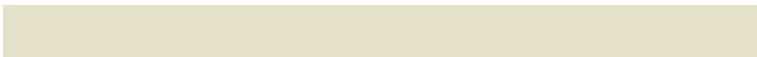
The Same Dimension uses a secret algorithm to generate beautiful new colors.



65.7868, 66.9243, 64.0948



82.0135, 82.8199, 77.1385



69.4396, 74.2298, 65.3124



14.7815, 15.1769, 15.0548



20.1748, 12.9237, 1.4312



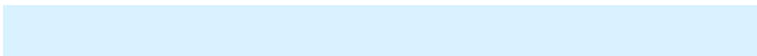
1.5750, 1.1234, 0.1338

Inverse Universe

The Inverse Universe completely reimagines the original color for something new.



63.2935, 68.5982, 84.0343



78.2851, 85.3215, 106.9504



59.7546, 61.5204, 82.8546



14.3670, 15.4553, 18.3703



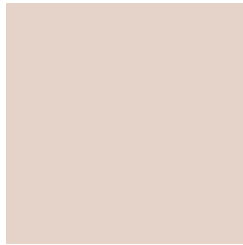
14.4384, 15.9390, 44.6987



1.1527, 1.3494, 3.3317

Previews

White Background



This preview shows how the XYZ color 65.7850, 66.9213, 64.0934 looks on a white background.

Color Contrast Check

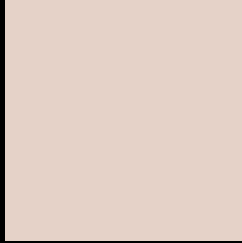
Large Text (above 18pt) WCAG AA × Fail

Any Text WCAG AA × Fail

Large Text (above 18pt) WCAG AAA × Fail

Any Text WCAG AAA × Fail

Black Background



This preview shows how the XYZ color 65.7850, 66.9213, 64.0934 looks on a black background.

Color Contrast Check

Large Text (above 18pt) WCAG AA ✓ Pass

Any Text WCAG AA ✓ Pass

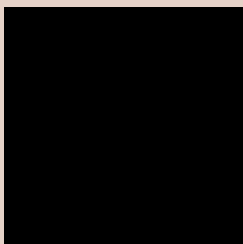
Large Text (above 18pt) WCAG AAA ✓ Pass

Any Text WCAG AAA ✓ Pass

If you want to check with other color combinations, try the [Color Contrast Checker](#).

XYZ 65.7850, 66.9213, 64.0934

Background



This preview shows how black text looks on a background with the XYZ color 65.7850, 66.9213, 64.0934.

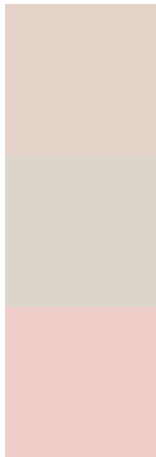


This preview shows how white text looks on a background with the XYZ color 65.7850, 66.9213,

Color Blindness Simulation

Color vision deficiency is a very complex topic, and I could not describe the different causes any better than Wikipedia does, so if you want to learn more, you should check out their [article about color blindness](#).

Dichromacy



Original Color

65.7850, 66.9213, 64.0934

Protanopia

63.9701, 67.0684, 65.4510

Deuteranopia

68.2105, 66.7104, 64.5396



Tritanopia

68.9108, 67.1092, 79.1334

Trichromacy



Original Color

65.7850, 66.9213, 64.0934

Protanomaly

64.5175, 66.9920, 64.7886

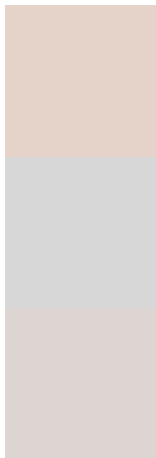
Deuteranomaly

67.1164, 66.5049, 64.5576

Tritanomaly

67.7766, 67.0070, 73.6514

Monochromacy



Original Color

65.7850, 66.9213, 64.0934

Achromatopsia

64.5905, 67.9542, 74.0022

Achromatomaly

64.9423, 67.4573, 70.5705

CSS Examples

Text

The CSS property to change the color of the text to XYZ 65.7850, 66.9213, 64.0934 is called "color". The color property can be set on classes, ids or directly on the HTML element.

This example shows how text in the color `rgb(229, 210, 200)` looks like.

```
.text, #text, p{  
    color:rgb(229, 210, 200)  
}
```

If you want to add a text shadow in that color use the text-shadow property, you can generate a text shadow directly with our [CSS Text Shadow Generator](#).

Here you see how black text with a 4 pixel rgb(229, 210, 200) colored shadow looks like.

```
.shadow{ text-shadow: 4px 4px 2px rgb(229, 210, 200) }
```

Border

The CSS property to change the border of an element to XYZ 65.7850, 66.9213, 64.0934 is called "border". The border property can be set on classes, ids or directly on the HTML element.

This example shows the color as border, it can be applied via the CSS property "border" or "border-color".

```
.border, #border, table{ border:4px solid rgb(229, 210, 200) }
```


If only the border color should be changed use the property `border-color`.

```
.border{ border-color:rgb(229, 210, 200) }
```

If you want to add a box shadow in that color use:

Here you see how a box with a 4 pixel `rgb(229, 210, 200)` colored shadow looks like.

```
.boxshadow{ -moz-box-shadow:4px 4px 4px 4px rgb(229, 210, 200); -webkit-box-shadow:4px 4px 4px 4px rgb(229, 210, 200); box-shadow:4px 4px 4px 4px rgb(229, 210, 200) }
```

Background

The CSS property to change the background color of an element to XYZ 65.7850, 66.9213, 64.0934 is called "background". The background property can be set on classes, ids or directly on the HTML element.

```
.background, #background, body{  
background: rgb(229, 210, 200) }
```

If only the background color should be changed can be used:

```
.background{ background-color: rgb(229,  
210, 200) }
```

This example shows the color as background, it is applied via the CSS property "background".

To optimize and compress your CSS code, you can use our [online CSS compressor and optimizer](#) based on csstidy. If you want to create a linear or radial gradient as background or border, check our [CSS Gradient Generator](#).

Hey! You found this booklet interesting? Support Converting Colors with the new Membership Option!

The pro membership hides all ads, plus gives you double the colors in the color bucket, and more awesome pro features!

[Learn more, Memberships starting at \\$2.50/m!](#)

**Follow me
on Twitter!**

@ConvertingColor