

Converting Colors

XYZ(65.7817, 66.0070, 72.9281)

Have a look what the booklet for
XYZ(65.7817, 66.0070, 72.9281)
contains.

XYZ(65.7448, 65.9743, 72.8875)	3
<i>Conversions</i>	4
<i>Details</i>	6
<i>Harmonies</i>	12
<i>Previews</i>	24
<i>Color Blindness Simulation</i>	28
<i>CSS Examples</i>	31

Color

**XYZ(65.7448, 65.9743,
72.8875)**

Conversions

Conversions Part 1

Format	Color
Hex	E1D0D6
RGB	225, 208, 214
RGB Percent	88%, 82%, 84%
CMY	0.1176, 0.1843, 0.1608
CMYK	0.00, 0.08, 0.05, 0.12
HSL	339°, 22%, 85%
HSV	339°, 8%, 88%
XYZ	65.7448, 65.9743, 72.8875
YIQ	213.7670, 8.2060, 5.4700

Conversions

Conversions Part 2

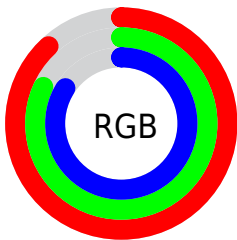
Format	Color
R _Y B	225, 208, 214
Decimal	14799062
CIE Lab	84.98, 6.92, -0.85
CIE LCh	85, 6.971, 353.026
Yxy	65.9743, 0.3213, 0.3224
Android (android.graphics.Color)	4292989142 (0xFFE1D0D6)
YUV	213.7670, 0.1149, 9.8513
Hunter-Lab	81.2246, 2.3385, 3.6528

Details

The XYZ color **65.7448, 65.9743, 72.8875** is a light color, and the websafe version is hex **CCCCCC**. A complement of this color would be **65.7263, 72.3765, 77.5273**, and the grayscale version is **63.7568, 67.0771, 73.0470**.

A 20% lighter version of the original color is **95.0500, 100.0000, 108.9000**, and **34.3912, 34.1605, 37.5819** is the 20% darker color. If you saturate the color by 10%, you get **58.8665, 55.0614, 61.8259**, and if you desaturate by 10%, it is **73.5714, 78.5159, 85.0871**.

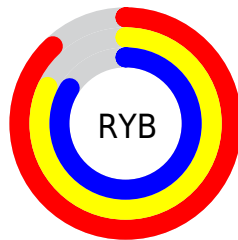
Distribution



Red (88%)

Green (82%)

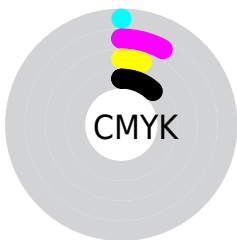
Blue (84%)



Red (88%)

Yellow (82%)

Blue (84%)

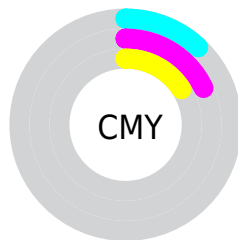


Cyan (0%)

Magenta (8%)

Yellow (5%)

Black (12%)



Cyan (12%)

Magenta (18%)

Yellow (16%)

Brightness & Saturation Gradients

These gradients show how the XYZ color 65.7448, 65.9743, 72.8875 changes by changing the brightness by 10 percent. The first figure shows a shift by +10% for each color and the second figure -10%.

Similar to the brightness gradients but the following saturation gradients show a change of the XYZ color 65.7448, 65.9743, 72.8875 by changing the saturation by 10% instead.

65.7448, 65.9743,
72.8875

65.7448, 65.9743,
72.8875

434.9667,
446.2850, 489.6851

48.3322, 48.2515,
53.3927

112.1797,
113.4494, 125.0369

34.3024, 34.0261,
37.7265

141.9328,
143.9706, 158.5286

23.2900, 22.9137,
25.4703

176.5300,
179.5267, 197.5231

14.9296, 14.5298,
16.2056

216.3368,
220.5021, 242.4388

8.8560, 8.4900,
9.5138

261.7185,
267.2813, 293.6943

4.7037, 4.4101,
4.9765

313.0405,

2.1075, 1.9055,

320.2485, 351.7082

2.1750

370.6681,
379.7883, 416.8990

■ 0.6933, 0.5517,
0.6599

■ 0.0000, 0.0000,
0.0000

■ 65.7448, 65.9743,
72.8875

■ 65.7448, 65.9743,
72.8875

■ 58.8665, 55.0614,
61.8259

■ 73.5714, 78.5159,
85.0871

■ 52.8938, 45.7015,
51.8644

■ 82.3754, 92.7405,
98.4526

■ 47.7893, 37.8260,
42.9690

■ 84.8617, 94.7478,
108.4232

■ 43.5106, 31.3577,
35.1023

■ 40.0115, 26.2122,
28.2244

■ 37.2412, 22.2961,
22.2928

■ 35.1424, 19.5037,
17.2610

■ 33.6484, 17.7110,
13.0781

■ 32.6706, 16.7509,
9.6832

Harmonies

Analogous

The Analogous color harmony consists of three colors that are next to each other on the color wheel.



65.1444, 65.9743, 77.1502



65.7448, 65.9743, 72.8875



65.5203, 65.9743, 68.5125

Triad

The Triadic color harmony groups three colors that are evenly spaced from another and form a triangle on the color wheel.



65.7448, 65.9743, 72.8875



61.5355, 65.9743, 64.1831



60.9120, 65.9743, 78.9508

Complementary

The Complementary color scheme is a pair of colors which are on the opposite of each other on the color wheel.



65.7448, 65.9743, 72.8875



65.7263, 72.3765, 77.5273

Split Complementary

Split-complementary colors differ from the complementary color scheme. The scheme consists of three colors, the original color and two neighbors of the complement color.



59.9746, 65.9743, 75.2628



65.7448, 65.9743, 72.8875



60.3304, 65.9743, 66.7693

Square

The Square scheme is like the rectangle color scheme, but the four colors are evenly spaced on the color wheel.



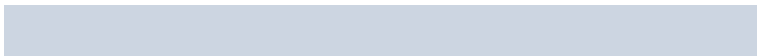
65.7448, 65.9743, 72.8875



63.0731, 65.9743, 63.6063



59.7635, 65.9743, 70.7923



62.3415, 65.9743, 80.7440

Rectangle

The Rectangle color scheme consists of four colors that form a rectangle on the color wheel.



65.7448, 65.9743, 72.8875



64.9349, 65.9743, 66.1069



59.7635, 65.9743, 70.7923



60.5299, 65.9743, 77.8844

Sweetspot

The Sweet Spot groups the original color and five complimentary colors.



65.7467, 65.9772, 72.8889



92.9176, 96.5783, 105.5900



65.2920, 65.5749, 80.4511



19.9105, 20.7076, 22.6354



0.0000, 0.0000, 0.0000



20.3446, 21.4041, 23.3091

Same Dimension

The Same Dimension uses a secret algorithm to generate beautiful new colors.



65.7467, 65.9772, 72.8889



85.8607, 85.3014, 94.4919



65.5512, 66.7894, 69.1146



13.9059, 13.7800, 15.2749



18.7647, 9.5729, 5.4269



1.3422, 0.6801, 0.5947

Inverse Universe

The Inverse Universe completely reimagines the original color for something new.



65.7467, 65.9772, 72.8889



85.8607, 85.3014, 94.4919



65.9216, 71.4809, 81.5578



13.9059, 13.7800, 15.2749



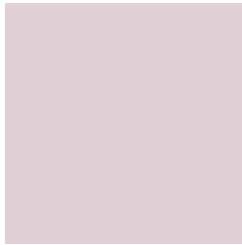
18.7647, 9.5729, 5.4269



1.3422, 0.6801, 0.5947

Previews

White Background



This preview shows how the XYZ color 65.7448, 65.9743, 72.8875 looks on a white background.

Color Contrast Check

Large Text (above 18pt) WCAG AA × Fail

Any Text WCAG AA × Fail

Large Text (above 18pt) WCAG AAA × Fail

Any Text WCAG AAA × Fail

Black Background



This preview shows how the XYZ color 65.7448, 65.9743, 72.8875 looks on a black background.

Color Contrast Check

Large Text (above 18pt) WCAG AA ✓ Pass

Any Text WCAG AA ✓ Pass

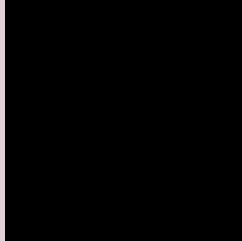
Large Text (above 18pt) WCAG AAA ✓ Pass

Any Text WCAG AAA ✓ Pass

If you want to check with other color combinations, try the [Color Contrast Checker](#).

XYZ 65.7448, 65.9743, 72.8875

Background



This preview shows how black text looks on a background with the XYZ color 65.7448, 65.9743, 72.8875.



This preview shows how white text looks on a background with the XYZ color 65.7448, 65.9743,

Color Blindness Simulation

Color vision deficiency is a very complex topic, and I could not describe the different causes any better than Wikipedia does, so if you want to learn more, you should check out their [article about color blindness](#).

Dichromacy



Original Color

65.7448, 65.9743, 72.8875

Protanopia

63.7133, 65.9935, 74.3457

Deuteranopia

67.4876, 66.1535, 72.8302



Tritanopia

66.9961, 66.1221, 79.0438

Trichromacy



Original Color

65.7448, 65.9743, 72.8875

Protanomaly

64.5258, 66.0596, 73.6399

Deuteranomaly

66.7635, 66.1387, 72.8656

Tritanomaly

66.5951, 65.9617, 76.9321

Monochromacy



Original Color

65.7448, 65.9743, 72.8875

Achromatopsia

63.9157, 67.2443, 73.2291

Achromatomaly

64.5945, 66.8474, 73.1167

CSS Examples

Text

The CSS property to change the color of the text to XYZ 65.7448, 65.9743, 72.8875 is called "color". The color property can be set on classes, ids or directly on the HTML element.

This example shows how text in the color `rgb(225, 208, 214)` looks like.

```
.text, #text, p{  
    color:rgb(225, 208, 214)  
}
```

If you want to add a text shadow in that color use the text-shadow property, you can generate a text shadow directly with our [CSS Text Shadow Generator](#).

Here you see how black text with a 4 pixel rgb(225, 208, 214) colored shadow looks like.

```
.shadow{ text-shadow: 4px 4px 2px rgb(225, 208, 214) }
```

Border

The CSS property to change the border of an element to XYZ 65.7448, 65.9743, 72.8875 is called "border". The border property can be set on classes, ids or directly on the HTML element.

This example shows the color as border, it can be applied via the CSS property "border" or "border-color".

```
.border, #border, table{ border:4px solid rgb(225, 208, 214) }
```


If only the border color should be changed use the property `border-color`.

```
.border{ border-color:rgb(225, 208, 214) }
```

If you want to add a box shadow in that color use:

Here you see how a box with a 4 pixel `rgb(225, 208, 214)` colored shadow looks like.

```
.boxshadow{ -moz-box-shadow:4px 4px 4px  
4px rgb(225, 208, 214); -webkit-box-  
shadow:4px 4px 4px 4px rgb(225, 208, 214);  
box-shadow:4px 4px 4px 4px rgb(225, 208,  
214) }
```

Background

The CSS property to change the background color of an element to XYZ 65.7448, 65.9743, 72.8875 is called "background". The background property can be set on classes, ids or directly on the HTML element.

```
.background, #background, body{  
background: rgb(225, 208, 214) }
```

If only the background color should be changed can be used:

```
.background{ background-color: rgb(225,  
208, 214) }
```

This example shows the color as background, it is applied via the CSS property "background".

To optimize and compress your CSS code, you can use our [online CSS compressor and optimizer](#) based on csstidy. If you want to create a linear or radial gradient as background or border, check our [CSS Gradient Generator](#).

Hey! You found this booklet interesting? Support Converting Colors with the new Membership Option!

The pro membership hides all ads, plus gives you double the colors in the color bucket, and more awesome pro features!

[Learn more, Memberships starting at \\$2.50/m!](#)

**Follow me
on Twitter!**

@ConvertingColor