

Converting Colors

XYZ(65.8085, 67.2976, 63.4940)

Have a look what the booklet for
XYZ(65.8085, 67.2976, 63.4940)
contains.

XYZ(65.9162, 67.3701, 63.5624)	3
<i>Conversions</i>	4
<i>Details</i>	6
<i>Harmonies</i>	12
<i>Previews</i>	24
<i>Color Blindness Simulation</i>	28
<i>CSS Examples</i>	31

Color

**XYZ(65.9162, 67.3701,
63.5624)**

Conversions

Conversions Part 1

Format	Color
Hex	E5D3C7
RGB	229, 211, 199
RGB Percent	90%, 83%, 78%
CMY	0.1020, 0.1725, 0.2196
CMYK	0.00, 0.08, 0.13, 0.10
HSL	24°, 37%, 84%
HSV	24°, 13%, 90%
XYZ	65.9162, 67.3701, 63.5624
YIQ	215.0140, 14.5800, 0.0840

Conversions

Conversions Part 2

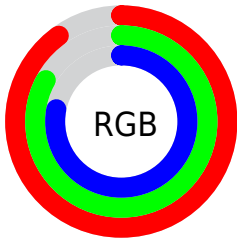
Format	Color
R _Y B	229, 219, 199
Decimal	15061959
CIE Lab	85.69, 4.25, 8.18
CIE LCh	86, 9.218, 62.510
Yxy	67.3701, 0.3349, 0.3422
Android (android.graphics.Color)	4293252039 (0xFFE5D3C7)
YUV	215.0140, -7.8949, 12.2657
Hunter-Lab	82.0793, -0.2891, 11.5412

Details

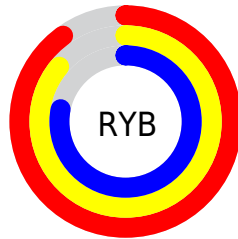
The XYZ color **65.9162, 67.3701, 63.5624** is a light color, and the websafe version is hex **CCCCCC**. A complement of this color would be **62.5086, 67.4236, 83.8489**, and the grayscale version is **64.6472, 68.0139, 74.0672**.

A 20% lighter version of the original color is **95.0500, 100.0000, 108.9000**, and **34.4014, 35.0425, 31.7388** is the 20% darker color. If you saturate the color by 10%, you get **60.1873, 59.8515, 49.5072**, and if you desaturate by 10%, it is **72.3407, 75.6381, 79.8250**.

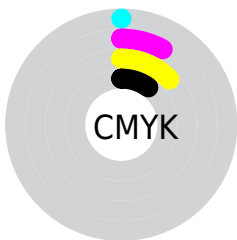
Distribution



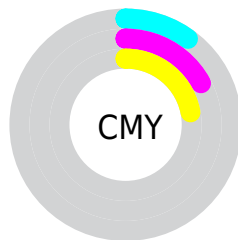
- Red (90%)
- Green (83%)
- Blue (78%)



- Red (90%)
- Yellow (86%)
- Blue (78%)



- Cyan (0%)
- Magenta (8%)
- Yellow (13%)
- Black (10%)



- Cyan (10%)
- Magenta (17%)
- Yellow (22%)

Brightness & Saturation Gradients

These gradients show how the XYZ color 65.9162, 67.3701, 63.5624 changes by changing the brightness by 10 percent. The first figure shows a shift by +10% for each color and the second figure -10%.

Similar to the brightness gradients but the following saturation gradients show a change of the XYZ color 65.9162, 67.3701, 63.5624 by changing the saturation by 10% instead.

65.9162, 67.3701,
63.5624

65.9162, 67.3701,
63.5624

435.5705,
451.2610, 455.7717

48.4718, 49.3855,
45.8524

112.4244,
115.4506, 111.5739

34.4135, 34.9253,
31.7816

142.2190,
146.3152, 142.7125

23.3758, 23.6054,
20.9313

176.8611,
182.2419, 179.1643

14.9935, 15.0411,
12.8830

216.7159,
223.6151, 221.3480

8.9011, 8.8483,
7.2183

262.1489,
270.8193, 269.6820

4.7333, 4.6423,
3.5185

313.5255,

2.1248, 2.0390,

324.2387, 324.5850

1.3651

371.2109,
384.2578, 386.4753

■ 0.7026, 0.6300,
0.1143

■ 0.0000, 0.0000,
0.0000

■ 65.9162, 67.3701,
63.5624

■ 65.9162, 67.3701,
63.5624

■ 60.1873, 59.8515,
49.5072

■ 72.3407, 75.6381,
79.8250

■ 55.1233, 53.0516,
37.5589

■ 79.4788, 84.6671,
98.3810

■ 50.6993, 46.9507,
27.6155

■ 85.2417, 93.6347,
108.1883

■ 46.8867, 41.5248,
19.5647

■ 86.1234, 95.3982,
108.4822

■ 43.6543, 36.7480,
13.2830

■ 40.9677, 32.5930,
8.6321

■ 38.7881, 29.0296,
5.4525

■ 37.0700, 26.0240,
3.5518

■ 36.1088, 24.2491,
2.7774

Harmonies

Analogous

The Analogous color harmony consists of three colors that are next to each other on the color wheel.



67.5008, 67.3701, 67.3105



65.9162, 67.3701, 63.5624



63.8565, 67.3701, 62.3924

Triad

The Triadic color harmony groups three colors that are evenly spaced from another and form a triangle on the color wheel.



65.9162, 67.3701, 63.5624



60.0815, 67.3701, 73.8624



66.2291, 67.3701, 83.5504

Complementary

The Complementary color scheme is a pair of colors which are on the opposite of each other on the color wheel.



65.9162, 67.3701, 63.5624



62.5086, 67.4236, 83.8489

Split Complementary

Split-complementary colors differ from the complementary color scheme. The scheme consists of three colors, the original color and two neighbors of the complement color.



64.2103, 67.3701, 85.5310



65.9162, 67.3701, 63.5624



60.6865, 67.3701, 79.7500

Square

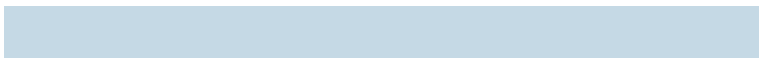
The Square scheme is like the rectangle color scheme, but the four colors are evenly spaced on the color wheel.



65.9162, 67.3701, 63.5624



60.5160, 67.3701, 68.1426



62.1865, 67.3701, 84.1041



67.6842, 67.3701, 78.8258

Rectangle

The Rectangle color scheme consists of four colors that form a rectangle on the color wheel.



65.9162, 67.3701, 63.5624



62.4991, 67.3701, 63.1770



62.1865, 67.3701, 84.1041



65.5924, 67.3701, 84.5704

Sweetspot

The Sweet Spot groups the original color and five complimentary colors.



65.9180, 67.3731, 63.5638



91.5300, 95.5185, 99.8390



65.2617, 62.5156, 74.2735



19.4530, 20.2683, 21.0163



0.0000, 0.0000, 0.0000



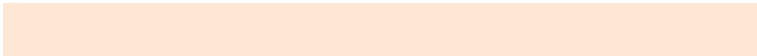
20.3446, 21.4041, 23.3091

Same Dimension

The Same Dimension uses a secret algorithm to generate beautiful new colors.



65.9180, 67.3731, 63.5638



81.8465, 83.0120, 75.4615



69.8190, 75.1750, 64.8642



14.8479, 15.3097, 15.0770



20.7554, 14.0850, 1.6248



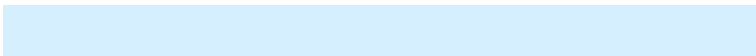
1.6226, 1.2186, 0.1497

Inverse Universe

The Inverse Universe completely reimagines the original color for something new.



62.5086, 67.4236, 83.8489



76.6112, 83.0886, 106.6076



58.8175, 60.0413, 82.6185



14.2983, 15.3180, 18.3474



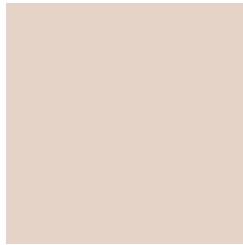
13.3516, 13.7654, 44.3365



1.0770, 1.1978, 3.3064

Previews

White Background



This preview shows how the XYZ color 65.9162, 67.3701, 63.5624 looks on a white background.

Color Contrast Check

Large Text (above 18pt) WCAG AA × Fail

Any Text WCAG AA × Fail

Large Text (above 18pt) WCAG AAA × Fail

Any Text WCAG AAA × Fail

Black Background



This preview shows how the XYZ color 65.9162, 67.3701, 63.5624 looks on a black background.

Color Contrast Check

Large Text (above 18pt) WCAG AA ✓ Pass

Any Text WCAG AA ✓ Pass

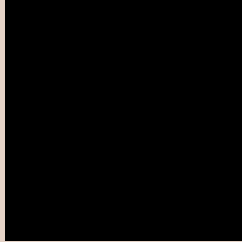
Large Text (above 18pt) WCAG AAA ✓ Pass

Any Text WCAG AAA ✓ Pass

If you want to check with other color combinations, try the [Color Contrast Checker](#).

XYZ 65.9162, 67.3701, 63.5624

Background



This preview shows how black text looks on a background with the XYZ color 65.9162, 67.3701, 63.5624.



This preview shows how white text looks on a background with the XYZ color 65.9162, 67.3701,

Color Blindness Simulation

Color vision deficiency is a very complex topic, and I could not describe the different causes any better than Wikipedia does, so if you want to learn more, you should check out their [article about color blindness](#).

Dichromacy



Original Color

65.9162, 67.3701, 63.5624

Protanopia

64.0384, 67.1308, 64.2259

Deuteranopia

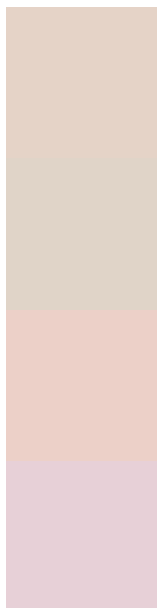
68.6733, 67.3210, 64.0184



Tritanopia

69.0461, 67.1633, 79.8457

Trichromacy



Original Color

65.9162, 67.3701, 63.5624

Protanomaly

64.7093, 67.1044, 64.1855

Deuteranomaly

67.5733, 67.1147, 64.0365

Tritanomaly

67.7766, 67.0070, 73.6514

Monochromacy



Original Color

65.9162, 67.3701, 63.5624

Achromatopsia

64.5905, 67.9542, 74.0022

Achromatomaly

65.0704, 67.9122, 70.0004

CSS Examples

Text

The CSS property to change the color of the text to XYZ 65.9162, 67.3701, 63.5624 is called "color". The color property can be set on classes, ids or directly on the HTML element.

This example shows how text in the color rgb(229, 211, 199) looks like.

```
.text, #text, p{  
    color:rgb(229, 211, 199)  
}
```

If you want to add a text shadow in that color use the text-shadow property, you can generate a text shadow directly with our [CSS Text Shadow Generator](#).

Here you see how black text with a 4 pixel rgb(229, 211, 199) colored shadow looks like.

```
.shadow{ text-shadow: 4px 4px 2px rgb(229, 211, 199) }
```

Border

The CSS property to change the border of an element to XYZ 65.9162, 67.3701, 63.5624 is called "border". The border property can be set on classes, ids or directly on the HTML element.

This example shows the color as border, it can be applied via the CSS property "border" or "border-color".

```
.border, #border, table{ border:4px solid rgb(229, 211, 199) }
```


If only the border color should be changed use the property `border-color`.

```
.border{ border-color:rgb(229, 211, 199) }
```

If you want to add a box shadow in that color use:

Here you see how a box with a 4 pixel `rgb(229, 211, 199)` colored shadow looks like.

```
.boxshadow{ -moz-box-shadow:4px 4px 4px  
4px rgb(229, 211, 199); -webkit-box-  
shadow:4px 4px 4px 4px rgb(229, 211, 199);  
box-shadow:4px 4px 4px 4px rgb(229, 211,  
199) }
```

Background

The CSS property to change the background color of an element to XYZ 65.9162, 67.3701, 63.5624 is called "background". The background property can be set on classes, ids or directly on the HTML element.

```
.background, #background, body{  
background: rgb(229, 211, 199) }
```

If only the background color should be changed can be used:

```
.background{ background-color: rgb(229,  
211, 199) }
```

This example shows the color as background, it is applied via the CSS property "background".

To optimize and compress your CSS code, you can use our [online CSS compressor and optimizer](#) based on csstidy. If you want to create a linear or radial gradient as background or border, check our [CSS Gradient Generator](#).

Hey! You found this booklet interesting? Support Converting Colors with the new Membership Option!

The pro membership hides all ads, plus gives you double the colors in the color bucket, and more awesome pro features!

[Learn more, Memberships starting at \\$2.50/m!](#)

**Follow me
on Twitter!**

@ConvertingColor