

Converting Colors

XYZ(65.8091, 65.0623, 66.8500)

Have a look what the booklet for
XYZ(65.8091, 65.0623, 66.8500)
contains.

XYZ(65.8058, 65.0593, 66.8470)	3
<i>Conversions</i>	4
<i>Details</i>	6
<i>Harmonies</i>	12
<i>Previews</i>	24
<i>Color Blindness Simulation</i>	28
<i>CSS Examples</i>	31

Color

**XYZ(65.8058, 65.0593,
66.8470)**

Conversions

Conversions Part 1

Format	Color
Hex	E7CDCD
RGB	231, 205, 205
RGB Percent	91%, 80%, 80%
CMY	0.0941, 0.1961, 0.1961
CMYK	0.00, 0.11, 0.11, 0.09
HSL	0°, 35%, 85%
HSV	0°, 11%, 91%
XYZ	65.8058, 65.0593, 66.8470
YIQ	212.7740, 15.4960, 5.5120

Conversions

Conversions Part 2

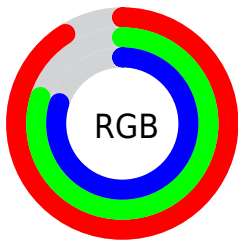
Format	Color
R_{YB}	231, 205, 205
Decimal	15191501
CIE Lab	84.51, 9.08, 3.32
CIE LCh	85, 9.665, 20.079
Yxy	65.0593, 0.3328, 0.3291
Android (android.graphics.Color)	4293381581 (0xFFE7CDCD)
YUV	212.7740, -3.8326, 15.9842
Hunter-Lab	80.6593, 4.4751, 7.3245

Details

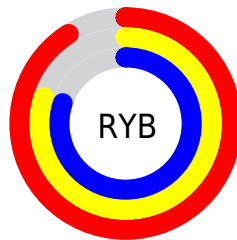
The XYZ color **65.8058, 65.0593, 66.8470** is a light color, and the websafe version is hex **FFCCCC**. A complement of this color would be **68.1764, 75.8993, 86.6589**, and the grayscale version is **63.1139, 66.4007, 72.3104**.

A 20% lighter version of the original color is **95.0500, 100.0000, 108.9000**, and **34.3317, 33.4815, 33.9313** is the 20% darker color. If you saturate the color by 10%, you get **58.0979, 53.7809, 51.5212**, and if you desaturate by 10%, it is **74.7446, 78.1392, 84.6157**.

Distribution



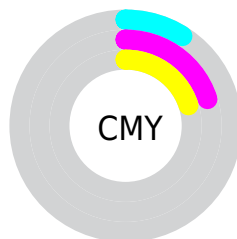
- Red (91%)
- Green (80%)
- Blue (80%)



- Red (91%)
- Yellow (80%)
- Blue (80%)



- Cyan (0%)
- Magenta (11%)
- Yellow (11%)
- Black (9%)



- Cyan (9%)
- Magenta (20%)
- Yellow (20%)

Brightness & Saturation Gradients

These gradients show how the XYZ color 65.8058, 65.0593, 66.8470 changes by changing the brightness by 10 percent. The first figure shows a shift by +10% for each color and the second figure -10%.

Similar to the brightness gradients but the following saturation gradients show a change of the XYZ color 65.8058, 65.0593, 66.8470 by changing the saturation by 10% instead.

65.8058, 65.0593,
66.8470

65.8058, 65.0593,
66.8470

435.1816,
443.0050, 467.8866

48.3819, 47.5092,
48.4995

112.2668,
112.1351, 116.3397

34.3419, 33.4384,
33.8598

142.0347,
142.4296, 148.3220

23.3205, 22.4625,
22.5094

176.6479,
177.7409, 185.6863

14.9524, 14.1971,
14.0298

216.4718,
218.4536, 228.8511

8.8721, 8.2579,
8.0024

261.8717,
264.9519, 278.2350

4.7143, 4.2604,
4.0087

313.2131,

2.1136, 1.8203,

317.6204, 334.2565

1.6301

370.8613,
376.8433, 397.3342

■ 0.6966, 0.4998,
0.3122

■ 0.0000, 0.0000,
0.0000

■ 65.8058, 65.0593,
66.8470

■ 65.8058, 65.0593,
66.8470

■ 58.0979, 53.7809,
51.5212

■ 74.7446, 78.1392,
84.6157

■ 51.5620, 44.2171,
38.5277

■ 84.9591, 93.0855,
104.9231

■ 46.1422, 36.2864,
27.7534

■ 86.7654, 95.7291,
108.5123

■ 41.7763, 29.8977,
19.0743

■ 38.3956, 24.9508,
12.3542

■ 35.9238, 21.3335,
7.4408

■ 34.2728, 18.9175,
4.1596

■ 33.3377, 17.5489,
2.3014

■ 32.9558, 16.9899,
1.5424

Harmonies

Analogous

The Analogous color harmony consists of three colors that are next to each other on the color wheel.



66.0037, 65.0593, 72.9003



65.8058, 65.0593, 66.8470



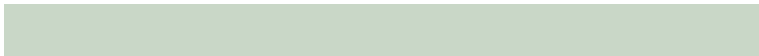
64.5309, 65.0593, 62.1321

Triad

The Triadic color harmony groups three colors that are evenly spaced from another and form a triangle on the color wheel.



65.8058, 65.0593, 66.8470



58.7171, 65.0593, 63.5016



61.1266, 65.0593, 83.1665

Complementary

The Complementary color scheme is a pair of colors which are on the opposite of each other on the color wheel.



65.8058, 65.0593, 66.8470



68.1764, 75.8993, 86.6589

Split Complementary

Split-complementary colors differ from the complementary color scheme. The scheme consists of three colors, the original color and two neighbors of the complement color.



59.2190, 65.0593, 80.3225



65.8058, 65.0593, 66.8470



57.8493, 65.0593, 68.8160

Square

The Square scheme is like the rectangle color scheme, but the four colors are evenly spaced on the color wheel.



65.8058, 65.0593, 66.8470



60.4270, 65.0593, 60.2797



58.0309, 65.0593, 74.9858



63.2686, 65.0593, 82.5635

Rectangle

The Rectangle color scheme consists of four colors that form a rectangle on the color wheel.



65.8058, 65.0593, 66.8470



63.2577, 65.0593, 60.2697



58.0309, 65.0593, 74.9858



60.4375, 65.0593, 82.5758

Sweetspot

The Sweet Spot groups the original color and five complimentary colors.



65.8076, 65.0622, 66.8484



91.4508, 94.7335, 101.7446



69.2110, 66.4221, 84.7751



19.3736, 19.9833, 21.3786



0.0000, 0.0000, 0.0000



20.3446, 21.4041, 23.3091

Same Dimension

The Same Dimension uses a secret algorithm to generate beautiful new colors.



65.8076, 65.0622, 66.8484



79.4770, 77.2128, 77.9398



69.0468, 71.5405, 67.9281



14.3772, 14.3684, 14.9201



18.4753, 9.5248, 0.8647



1.3653, 0.7040, 0.0639

Inverse Universe

The Inverse Universe completely reimagines the original color for something new.



68.1764, 75.8993, 86.6589



83.1121, 93.8433, 108.3408



64.6730, 68.8924, 85.4911



14.8073, 16.3360, 18.5171



24.1010, 35.2640, 47.9196



1.7810, 2.6060, 3.5411

Previews

White Background



This preview shows how the XYZ color 65.8058, 65.0593, 66.8470 looks on a white background.

Color Contrast Check

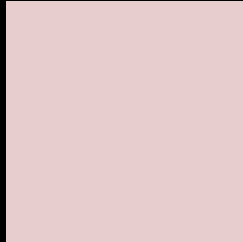
Large Text (above 18pt) WCAG AA × Fail

Any Text WCAG AA × Fail

Large Text (above 18pt) WCAG AAA × Fail

Any Text WCAG AAA × Fail

Black Background



This preview shows how the XYZ color 65.8058, 65.0593, 66.8470 looks on a black background.

Color Contrast Check

Large Text (above 18pt) WCAG AA ✓ Pass

Any Text WCAG AA ✓ Pass

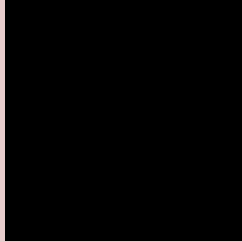
Large Text (above 18pt) WCAG AAA ✓ Pass

Any Text WCAG AAA ✓ Pass

If you want to check with other color combinations, try the [Color Contrast Checker](#).

XYZ 65.8058, 65.0593, 66.8470

Background



This preview shows how black text looks on a background with the XYZ color 65.8058, 65.0593, 66.8470.



This preview shows how white text looks on a background with the XYZ color 65.8058, 65.0593,

66.8470.

Color Blindness Simulation

Color vision deficiency is a very complex topic, and I could not describe the different causes any better than Wikipedia does, so if you want to learn more, you should check out their [article about color blindness](#).

Dichromacy



Original Color

65.8058, 65.0593, 66.8470

Protanopia

62.4561, 65.0943, 68.9472

Deuteranopia

66.5440, 65.0859, 66.8132



Tritanopia

67.7464, 65.1500, 76.0224

Trichromacy



Original Color

65.8058, 65.0593, 66.8470

Protanomaly

63.6372, 64.9889, 68.2216

Deuteranomaly

66.2166, 64.9171, 66.7979

Tritanomaly

67.0092, 65.1966, 72.6708

Monochromacy



Original Color

65.8058, 65.0593, 66.8470

Achromatopsia

63.2451, 66.5387, 72.4607

Achromatomaly

64.1947, 65.9620, 70.3213

CSS Examples

Text

The CSS property to change the color of the text to XYZ 65.8058, 65.0593, 66.8470 is called "color". The color property can be set on classes, ids or directly on the HTML element.

This example shows how text in the color `rgb(231, 205, 205)` looks like.

```
.text, #text, p{  
    color:rgb(231, 205, 205)  
}
```

If you want to add a text shadow in that color use the text-shadow property, you can generate a text shadow directly with our [CSS Text Shadow Generator](#).

Here you see how black text with a 4 pixel rgb(231, 205, 205) colored shadow looks like.

```
.shadow{ text-shadow: 4px 4px 2px rgb(231, 205, 205) }
```

Border

The CSS property to change the border of an element to XYZ 65.8058, 65.0593, 66.8470 is called "border". The border property can be set on classes, ids or directly on the HTML element.

This example shows the color as border, it can be applied via the CSS property "border" or "border-color".

```
.border, #border, table{ border:4px solid rgb(231, 205, 205) }
```


If only the border color should be changed use the property `border-color`.

```
.border{ border-color:rgb(231, 205, 205) }
```

If you want to add a box shadow in that color use:

Here you see how a box with a 4 pixel `rgb(231, 205, 205)` colored shadow looks like.

```
.boxshadow{ -moz-box-shadow:4px 4px 4px 4px rgb(231, 205, 205); -webkit-box-shadow:4px 4px 4px 4px rgb(231, 205, 205); box-shadow:4px 4px 4px 4px rgb(231, 205, 205) }
```

Background

The CSS property to change the background color of an element to XYZ 65.8058, 65.0593, 66.8470 is called "background". The background property can be set on classes, ids or directly on the HTML element.

```
.background, #background, body{  
background: rgb(231, 205, 205) }
```

If only the background color should be changed can be used:

```
.background{ background-color: rgb(231,  
205, 205) }
```

This example shows the color as background, it is applied via the CSS property "background".

To optimize and compress your CSS code, you can use our [online CSS compressor and optimizer](#) based on csstidy. If you want to create a linear or radial gradient as background or border, check our [CSS Gradient Generator](#).

Hey! You found this booklet interesting? Support Converting Colors with the new Membership Option!

The pro membership hides all ads, plus gives you double the colors in the color bucket, and more awesome pro features!

[Learn more, Memberships starting at \\$2.50/m!](#)

**Follow me
on Twitter!**

@ConvertingColor