

Converting Colors

XYZ(65.8265, 65.4666, 68.1701)

Have a look what the booklet for
XYZ(65.8265, 65.4666, 68.1701)
contains.

XYZ(65.6469, 65.3056, 68.1768)	3
<i>Conversions</i>	4
<i>Details</i>	6
<i>Harmonies</i>	12
<i>Previews</i>	24
<i>Color Blindness Simulation</i>	28
<i>CSS Examples</i>	31

Color

**XYZ(65.6469, 65.3056,
68.1768)**

Conversions

Conversions Part 1

Format	Color
Hex	E5CECF
RGB	229, 206, 207
RGB Percent	90%, 81%, 81%
CMY	0.1020, 0.1921, 0.1882
CMYK	0.00, 0.10, 0.10, 0.10
HSL	357°, 31%, 85%
HSV	357°, 10%, 90%
XYZ	65.6469, 65.3056, 68.1768
YIQ	212.9910, 13.3870, 5.1870

Conversions

Conversions Part 2

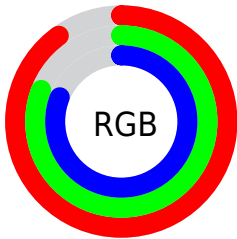
Format	Color
R _Y B	229, 206, 207
Decimal	15060687
CIE Lab	84.64, 8.18, 2.42
CIE LCh	85, 8.525, 16.469
Yxy	65.3056, 0.3297, 0.3280
Android (android.graphics.Color)	4293250767 (0xFFE5CECF)
YUV	212.9910, -2.9536, 14.0399
Hunter-Lab	80.8119, 3.5823, 6.5484

Details

The XYZ color **65.6469, 65.3056, 68.1768** is a light color, and the websafe version is hex **CCCCCC**. A complement of this color would be **67.4790, 74.7635, 84.2767**, and the grayscale version is **63.2542, 66.5484, 72.4712**.

A 20% lighter version of the original color is **95.0500, 100.0000, 108.9000**, and **34.2116, 33.6406, 34.8271** is the 20% darker color. If you saturate the color by 10%, you get **58.0355, 54.0754, 53.3294**, and if you desaturate by 10%, it is **74.4369, 78.2966, 85.2521**.

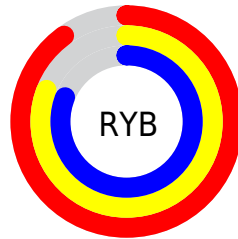
Distribution



Red (90%)

Green (81%)

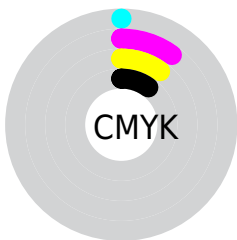
Blue (81%)



Red (90%)

Yellow (81%)

Blue (81%)

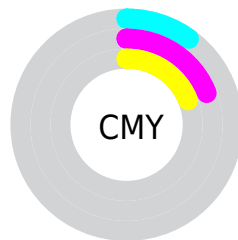


Cyan (0%)

Magenta (10%)

Yellow (10%)

Black (10%)



Cyan (10%)

Magenta (19%)

Yellow (19%)

Brightness & Saturation Gradients

These gradients show how the XYZ color 65.6469, 65.3056, 68.1768 changes by changing the brightness by 10 percent. The first figure shows a shift by +10% for each color and the second figure -10%.

Similar to the brightness gradients but the following saturation gradients show a change of the XYZ color 65.6469, 65.3056, 68.1768 by changing the saturation by 10% instead.

65.6469, 65.3056,
68.1768

65.6469, 65.3056,
68.1768

434.6216,
443.8893, 472.7372

48.2525, 47.7089,
49.5740

112.0399,
112.4891, 118.2616

34.2389, 33.5964,
34.7062

141.7692,
142.8447, 150.5808

23.2410, 22.5837,
23.1549

176.3409,
178.2221, 188.3091

14.8932, 14.2865,
14.5016

216.1202,
219.0056, 231.8651

8.8303, 8.3202,
8.3276

261.4726,
265.5797, 281.6674

4.6869, 4.3005,
4.2145

312.7634,

2.0976, 1.8430,

318.3288, 338.1345

1.7438

370.3579,
377.6372, 401.6849

■ 0.6879, 0.5138,
0.3905

■ 0.0000, 0.0000,
0.0000

■ 65.6469, 65.3056,
68.1768

■ 65.6469, 65.3056,
68.1768

■ 58.0355, 54.0754,
53.3294

■ 74.4369, 78.2966,
85.2521

■ 51.5473, 44.5220,
40.6142

■ 84.4467, 93.1105,
104.6376

■ 46.1309, 36.5677,
29.9344

■ 86.1234, 95.3982,
108.4822

■ 41.7285, 30.1252,
21.1846

■ 38.2771, 25.0987,
14.2493

■ 35.7063, 21.3816,
9.0013

■ 33.9365, 18.8522,
5.2966

■ 32.8731, 17.3661,
2.9672

■ 32.3678, 16.6799,
1.7984

Harmonies

Analogous

The Analogous color harmony consists of three colors that are next to each other on the color wheel.



65.6973, 65.3056, 73.5872



65.6469, 65.3056, 68.1768



64.6257, 65.3056, 63.7759

Triad

The Triadic color harmony groups three colors that are evenly spaced from another and form a triangle on the color wheel.



65.6469, 65.3056, 68.1768



59.4555, 65.3056, 64.1298



61.2187, 65.3056, 81.7907

Complementary

The Complementary color scheme is a pair of colors which are on the opposite of each other on the color wheel.



65.6469, 65.3056, 68.1768



67.4790, 74.7635, 84.2767

Split Complementary

Split-complementary colors differ from the complementary color scheme. The scheme consists of three colors, the original color and two neighbors of the complement color.



59.5845, 65.3056, 78.9788



65.6469, 65.3056, 68.1768



58.5807, 65.3056, 68.6826

Square

The Square scheme is like the rectangle color scheme, but the four colors are evenly spaced on the color wheel.



65.6469, 65.3056, 68.1768



61.0394, 65.3056, 61.5223



58.6274, 65.3056, 74.1194



63.1142, 65.3056, 81.6381

Rectangle

The Rectangle color scheme consists of four colors that form a rectangle on the color wheel.



65.6469, 65.3056, 68.1768



63.5436, 65.3056, 61.9241



58.6274, 65.3056, 74.1194



60.6214, 65.3056, 81.1549

Sweetspot

The Sweet Spot groups the original color and five complimentary colors.



65.6487, 65.3085, 68.1782



91.5018, 94.7534, 102.0145



68.1634, 66.2721, 83.3287



19.3873, 19.9886, 21.4511



0.0000, 0.0000, 0.0000



20.3446, 21.4041, 23.3091

Same Dimension

The Same Dimension uses a secret algorithm to generate beautiful new colors.



65.6487, 65.3085, 68.1782



81.6931, 80.2625, 82.9407



68.1012, 70.4077, 68.3967



14.4022, 14.3781, 15.0522



18.5174, 9.5412, 1.0877



1.3773, 0.7086, 0.1276

Inverse Universe

The Inverse Universe completely reimagines the original color for something new.



65.6487, 65.3085, 68.1782



81.6931, 80.2625, 82.9407



64.8392, 69.2620, 84.0810



14.4022, 14.3781, 15.0522



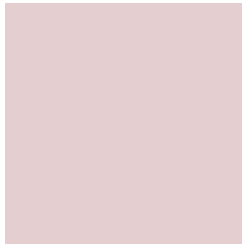
18.5174, 9.5412, 1.0877



1.3773, 0.7086, 0.1276

Previews

White Background



This preview shows how the XYZ color 65.6469, 65.3056, 68.1768 looks on a white background.

Color Contrast Check

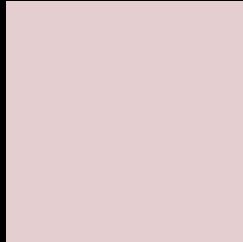
Large Text (above 18pt) WCAG AA × Fail

Any Text WCAG AA × Fail

Large Text (above 18pt) WCAG AAA × Fail

Any Text WCAG AAA × Fail

Black Background



This preview shows how the XYZ color 65.6469, 65.3056, 68.1768 looks on a black background.

Color Contrast Check

Large Text (above 18pt) WCAG AA ✓ Pass

Any Text WCAG AA ✓ Pass

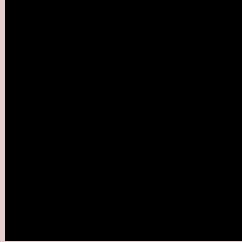
Large Text (above 18pt) WCAG AAA ✓ Pass

Any Text WCAG AAA ✓ Pass

If you want to check with other color combinations, try the [Color Contrast Checker](#).

XYZ 65.6469, 65.3056, 68.1768

Background



This preview shows how black text looks on a background with the XYZ color 65.6469, 65.3056, 68.1768.



This preview shows how white text looks on a background with the XYZ color 65.6469, 65.3056,

68.1768.

Color Blindness Simulation

Color vision deficiency is a very complex topic, and I could not describe the different causes any better than Wikipedia does, so if you want to learn more, you should check out their [article about color blindness](#).

Dichromacy



Original Color

65.6469, 65.3056, 68.1768

Protanopia

62.5795, 65.1437, 69.5973

Deuteranopia

66.4596, 65.0144, 68.0777



Tritanopia

67.4661, 65.3420, 76.7666

Trichromacy



Original Color

65.6469, 65.3056, 68.1768

Protanomaly

63.7008, 65.3706, 68.9349

Deuteranomaly

66.3725, 65.3234, 68.1420

Tritanomaly

66.7302, 65.3919, 73.3948

Monochromacy



Original Color

65.6469, 65.3056, 68.1768

Achromatopsia

63.2451, 66.5387, 72.4607

Achromatomaly

64.0179, 65.8564, 70.9655

CSS Examples

Text

The CSS property to change the color of the text to XYZ 65.6469, 65.3056, 68.1768 is called "color". The color property can be set on classes, ids or directly on the HTML element.

This example shows how text in the color `rgb(229, 206, 207)` looks like.

```
.text, #text, p{  
    color:rgb(229, 206, 207)  
}
```

If you want to add a text shadow in that color use the text-shadow property, you can generate a text shadow directly with our [CSS Text Shadow Generator](#).

Here you see how black text with a 4 pixel rgb(229, 206, 207) colored shadow looks like.

```
.shadow{ text-shadow: 4px 4px 2px rgb(229, 206, 207) }
```

Border

The CSS property to change the border of an element to XYZ 65.6469, 65.3056, 68.1768 is called "border". The border property can be set on classes, ids or directly on the HTML element.

This example shows the color as border, it can be applied via the CSS property "border" or "border-color".

```
.border, #border, table{ border:4px solid rgb(229, 206, 207) }
```


If only the border color should be changed use the property border-color.

```
.border{ border-color:rgb(229, 206, 207) }
```

If you want to add a box shadow in that color use:

Here you see how a box with a 4 pixel rgb(229, 206, 207) colored shadow looks like.

```
.boxshadow{ -moz-box-shadow:4px 4px 4px  
4px rgb(229, 206, 207); -webkit-box-  
shadow:4px 4px 4px 4px rgb(229, 206, 207);  
box-shadow:4px 4px 4px 4px rgb(229, 206,  
207) }
```

Background

The CSS property to change the background color of an element to XYZ 65.6469, 65.3056, 68.1768 is called "background". The background property can be set on classes, ids or directly on the HTML element.

```
.background, #background, body{  
background: rgb(229, 206, 207) }
```

If only the background color should be changed can be used:

```
.background{ background-color: rgb(229,  
206, 207) }
```

This example shows the color as background, it is applied via the CSS property "background".

To optimize and compress your CSS code, you can use our [online CSS compressor and optimizer](#) based on csstidy. If you want to create a linear or radial gradient as background or border, check our [CSS Gradient Generator](#).

Hey! You found this booklet interesting? Support Converting Colors with the new Membership Option!

The pro membership hides all ads, plus gives you double the colors in the color bucket, and more awesome pro features!

[Learn more, Memberships starting at \\$2.50/m!](#)

**Follow me
on Twitter!**

@ConvertingColor