

# Converting Colors

XYZ(65.9938, 63.8293, 66.3832)

Have a look what the booklet for  
XYZ(65.9938, 63.8293, 66.3832)  
contains.

<b>XYZ(65.8378, 63.6735, 66.5778)</b> .....	3
<b><i>Conversions</i></b> .....	4
<b><i>Details</i></b> .....	6
<b><i>Harmonies</i></b> .....	12
<b><i>Previews</i></b> .....	24
<b><i>Color Blindness Simulation</i></b> .....	28
<b><i>CSS Examples</i></b> .....	31

# Color

**XYZ(65.8378, 63.6735,  
66.5778)**

# Conversions

## Conversions Part 1

Format	Color
Hex	EAC9CD
RGB	234, 201, 205
RGB Percent	92%, 79%, 80%
CMY	0.0823, 0.2117, 0.1961
CMYK	0.00, 0.14, 0.12, 0.08
HSL	353°, 44%, 85%
HSV	353°, 14%, 92%
XYZ	65.8378, 63.6735, 66.5778
YIQ	211.3230, 18.3840, 8.2400

# Conversions

## Conversions Part 2

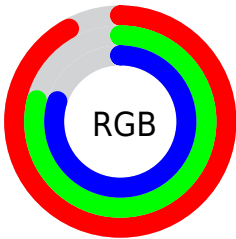
<b>Format</b>	<b>Color</b>
<b>R<sub>YB</sub></b>	234, 201, 205
Decimal	15387085
CIE Lab	83.80, 12.25, 2.31
CIE LCh	84, 12.463, 10.669
Yxy	63.6735, 0.3358, 0.3247
Android (android.graphics.Color)	4293577165 (0xFFEAC9CD)
YUV	211.3230, -3.1172, 19.8877
Hunter-Lab	79.7957, 7.6343, 6.3882

# Details

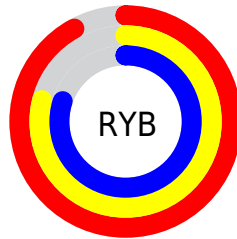
The XYZ color **65.8378, 63.6735, 66.5778** is a light color, and the websafe version is hex **FFCCCC**. A complement of this color would be **67.7957, 76.9780, 86.1517**, and the grayscale version is **62.1434, 65.3796, 71.1984**.

A 20% lighter version of the original color is **95.0500, 100.0000, 108.9000**, and **34.3797, 32.5668, 33.7522** is the 20% darker color. If you saturate the color by 10%, you get **58.4714, 52.6556, 52.6687**, and if you desaturate by 10%, it is **74.3650, 76.4895, 82.4854**.

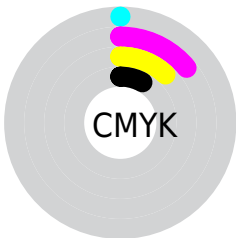
# Distribution



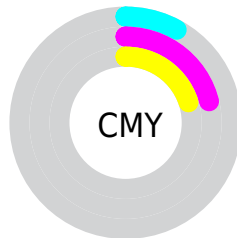
- Red (92%)
- Green (79%)
- Blue (80%)



- Red (92%)
- Yellow (79%)
- Blue (80%)



- Cyan (0%)
- Magenta (14%)
- Yellow (12%)
- Black (8%)



- Cyan (8%)
- Magenta (21%)
- Yellow (20%)

# Brightness & Saturation Gradients

These gradients show how the XYZ color 65.8378, 63.6735, 66.5778 changes by changing the brightness by 10 percent. The first figure shows a shift by +10% for each color and the second figure -10%.

Similar to the brightness gradients but the following saturation gradients show a change of the XYZ color 65.8378, 63.6735, 66.5778 by changing the saturation by 10% instead.



65.8378, 63.6735,  
66.5778

65.8378, 63.6735,  
66.5778

435.2944,  
438.0096, 466.9010

48.4080, 46.3863,  
48.2822

112.3125,  
110.1406, 115.9501

34.3627, 32.5508,  
33.6888

142.0881,  
140.0892, 147.8639

23.3366, 21.7825,  
22.3792

176.7097,  
175.0272, 185.1541

14.9643, 13.6972,  
13.9348

216.5426,  
215.3388, 228.2393

8.8805, 7.9104,  
7.9371

261.9521,  
261.4084, 277.5381

4.7198, 4.0376,  
3.9675

313.3037,

2.1169, 1.6946,

313.6205, 333.4689

1.6076

370.9627,  
372.3595, 396.4504

■ 0.6984, 0.4202,  
0.2962

■ 0.0000, 0.0000,  
0.0000

■ 65.8378, 63.6735,  
66.5778

■ 65.8378, 63.6735,  
66.5778

■ 58.4714, 52.6556,  
52.6687

■ 74.3650, 76.4895,  
82.4854

■ 52.2105, 43.3473,  
40.6749

■ 84.0949, 91.1701,  
100.4620

■ 47.0031, 35.6653,  
30.5137

■ 87.7420, 96.2326,  
108.5580

■ 42.7907, 29.5161,  
22.0943

■ 39.5094, 24.7967,  
15.3185

■ 37.0877, 21.3912,  
10.0780

■ 35.4433, 19.1658,  
6.2515

■ 34.4775, 17.9579,  
3.6988

■ 34.1457, 17.5781,  
2.7132

# Harmonies

## Analogous

The Analogous color harmony consists of three colors that are next to each other on the color wheel.



65.6205, 63.6735, 74.4372



65.8378, 63.6735, 66.5778



64.5980, 63.6735, 59.9679

# Triad

The Triadic color harmony groups three colors that are evenly spaced from another and form a triangle on the color wheel.



65.8378, 63.6735, 66.5778



57.1560, 63.6735, 58.5190



58.7951, 63.6735, 84.5394

# Complementary

The Complementary color scheme is a pair of colors which are on the opposite of each other on the color wheel.



65.8378, 63.6735, 66.5778



67.7957, 76.9780, 86.1517

# Split Complementary

Split-complementary colors differ from the complementary color scheme. The scheme consists of three colors, the original color and two neighbors of the complement color.



56.6168, 63.6735, 79.6182



65.8378, 63.6735, 66.5778



55.6904, 63.6735, 64.4611

# Square

The Square scheme is like the rectangle color scheme, but the four colors are evenly spaced on the color wheel.



65.8378, 63.6735, 66.5778



59.5511, 63.6735, 55.5535



55.4961, 63.6735, 72.1562



61.4988, 63.6735, 85.2134



# Rectangle

The Rectangle color scheme consists of four colors that form a rectangle on the color wheel.



65.8378, 63.6735, 66.5778



63.1333, 63.6735, 57.0075



55.4961, 63.6735, 72.1562



57.9793, 63.6735, 83.3105

# Sweetspot

The Sweet Spot groups the original color and five complimentary colors.



65.8396, 63.6763, 66.5791



90.4719, 93.0999, 100.4188



68.2448, 64.4736, 86.6904



19.1861, 19.6583, 21.1621



0.0000, 0.0000, 0.0000



20.3446, 21.4041, 23.3091



# Same Dimension

The Same Dimension uses a secret algorithm to generate beautiful new colors.



65.8396, 63.6763, 66.5791



77.2074, 73.1767, 75.6326



68.2957, 69.3507, 65.0482



15.1397, 15.0837, 16.0208



19.2119, 9.8874, 1.6512



1.5328, 0.7861, 0.2572



# Inverse Universe

The Inverse Universe completely reimagines the original color for something new.



65.8396, 63.6763, 66.5791



77.2074, 73.1767, 75.6326



65.0358, 70.5497, 88.0324



15.1397, 15.0837, 16.0208



19.2119, 9.8874, 1.6512

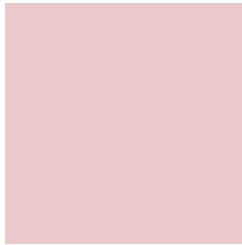


1.5328, 0.7861, 0.2572



# Previews

## White Background



This preview shows how the XYZ color 65.8378, 63.6735, 66.5778 looks on a white background.

## Color Contrast Check

Large Text (above 18pt) WCAG AA × Fail

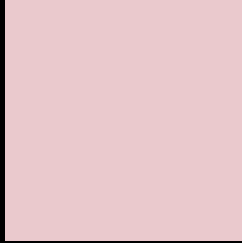
Any Text WCAG AA × Fail

Large Text (above 18pt) WCAG AAA × Fail

Any Text WCAG AAA × Fail



# Black Background



This preview shows how the XYZ color 65.8378, 63.6735, 66.5778 looks on a black background.

## Color Contrast Check

Large Text (above 18pt) WCAG AA ✓ Pass

Any Text WCAG AA ✓ Pass

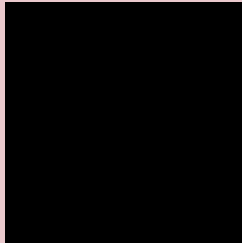
Large Text (above 18pt) WCAG AAA ✓ Pass

Any Text WCAG AAA ✓ Pass

If you want to check with other color combinations, try the [Color Contrast Checker](#).

**XYZ 65.8378, 63.6735, 66.5778**

## **Background**



This preview shows how black text looks on a background with the XYZ color 65.8378, 63.6735, 66.5778.



This preview shows how white text looks on a background with the XYZ color 65.8378, 63.6735,



# Color Blindness Simulation

Color vision deficiency is a very complex topic, and I could not describe the different causes any better than Wikipedia does, so if you want to learn more, you should check out their [article about color blindness](#).

## Dichromacy



### Original Color

65.8378, 63.6735, 66.5778

### Protanopia

61.5051, 63.8613, 69.4064

### Deuteranopia

65.0950, 63.6378, 66.6100



## Tritanopia

66.9501, 63.4153, 73.0017

# Trichromacy



## Original Color

65.8378, 63.6735, 66.5778

## Protanomaly

63.0353, 63.5889, 68.6261

## Deuteranomaly

65.4187, 63.8046, 66.6252

## Tritanomaly

66.6731, 63.6739, 70.4043

# Monochromacy



## Original Color

65.8378, 63.6735, 66.5778

## Achromatopsia

61.9161, 65.1406, 70.9381

## Achromatomaly

63.0349, 64.2892, 69.4084

# CSS Examples

## Text

The CSS property to change the color of the text to XYZ 65.8378, 63.6735, 66.5778 is called "color". The color property can be set on classes, ids or directly on the HTML element.

This example shows how text in the color `rgb(234, 201, 205)` looks like.

```
.text, #text, p{  
    color:rgb(234, 201, 205)  
}
```

If you want to add a text shadow in that color use the text-shadow property, you can generate a text shadow directly with our [CSS Text Shadow Generator](#).

Here you see how black text with a 4 pixel rgb(234, 201, 205) colored shadow looks like.

```
.shadow{ text-shadow: 4px 4px 2px rgb(234, 201, 205) }
```

## Border

The CSS property to change the border of an element to XYZ 65.8378, 63.6735, 66.5778 is called "border". The border property can be set on classes, ids or directly on the HTML element.

This example shows the color as border, it can be applied via the CSS property "border" or "border-color".

```
.border, #border, table{ border:4px solid rgb(234, 201, 205) }
```



If only the border color should be changed use the property `border-color`.

```
.border{ border-color:rgb(234, 201, 205) }
```

If you want to add a box shadow in that color use:

Here you see how a box with a 4 pixel `rgb(234, 201, 205)` colored shadow looks like.

```
.boxshadow{ -moz-box-shadow:4px 4px 4px  
4px rgb(234, 201, 205); -webkit-box-  
shadow:4px 4px 4px 4px rgb(234, 201, 205);  
box-shadow:4px 4px 4px 4px rgb(234, 201,  
205) }
```

# Background

The CSS property to change the background color of an element to XYZ 65.8378, 63.6735, 66.5778 is called "background". The background property can be set on classes, ids or directly on the HTML element.

```
.background, #background, body{  
background: rgb(234, 201, 205) }
```

If only the background color should be changed can be used:

```
.background{ background-color: rgb(234,  
201, 205) }
```

This example shows the color as background, it is applied via the CSS property "background".

To optimize and compress your CSS code, you can use our [online CSS compressor and optimizer](#) based on csstidy. If you want to create a linear or radial gradient as background or border, check our [CSS Gradient Generator](#).

Hey! You found this booklet interesting? Support Converting Colors with the new Membership Option!

The pro membership hides all ads, plus gives you double the colors in the color bucket, and more awesome pro features!

**[Learn more, Memberships starting at \\$2.50/m!](#)**

**Follow me  
on Twitter!**

@ConvertingColor