

Converting Colors

XYZ(66.0107, 64.8690, 64.7235)

Have a look what the booklet for
XYZ(66.0107, 64.8690, 64.7235)
contains.

XYZ(66.1852, 64.9424, 64.9239)	3
<i>Conversions</i>	4
<i>Details</i>	6
<i>Harmonies</i>	12
<i>Previews</i>	24
<i>Color Blindness Simulation</i>	28
<i>CSS Examples</i>	31

Color

**XYZ(66.1852, 64.9424,
64.9239)**

Conversions

Conversions Part 1

Format	Color
Hex	EACCCA
RGB	234, 204, 202
RGB Percent	92%, 80%, 79%
CMY	0.0823, 0.2000, 0.2078
CMYK	0.00, 0.13, 0.14, 0.08
HSL	4°, 43%, 85%
HSV	4°, 14%, 92%
XYZ	66.1852, 64.9424, 64.9239
YIQ	212.7420, 18.5220, 5.7380

Conversions

Conversions Part 2

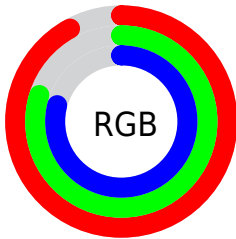
Format	Color
R_{YB}	234, 204, 202
Decimal	15387850
CIE _{Lab}	84.45, 10.19, 4.86
CIE _{LCh}	84, 11.286, 25.508
Yxy	64.9424, 0.3376, 0.3313
Android (android.graphics.Color)	4293577930 (0xFFEACCCA)
YUV	212.7420, -5.2958, 18.6433
Hunter-Lab	80.5868, 5.5733, 8.6445

Details

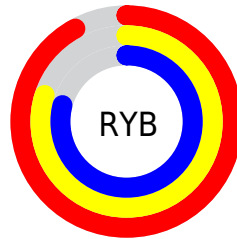
The XYZ color **66.1852, 64.9424, 64.9239** is a light color, and the websafe version is hex **FFCCCC**. A complement of this color would be **68.0646, 76.2087, 88.9649**, and the grayscale version is **63.1006, 66.3867, 72.2951**.

A 20% lighter version of the original color is **95.0500, 100.0000, 108.9000**, and **34.6117, 33.4158, 32.6426** is the 20% darker color. If you saturate the color by 10%, you get **58.7709, 54.2162, 49.8039**, and if you desaturate by 10%, it is **74.7575, 77.3109, 82.5040**.

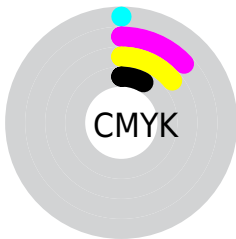
Distribution



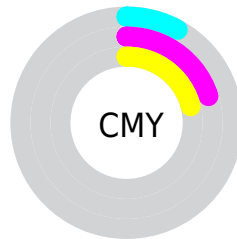
- Red (92%)
- Green (80%)
- Blue (79%)



- Red (92%)
- Yellow (80%)
- Blue (79%)



- Cyan (0%)
- Magenta (13%)
- Yellow (14%)
- Black (8%)



- Cyan (8%)
- Magenta (20%)
- Yellow (21%)

Brightness & Saturation Gradients

These gradients show how the XYZ color 66.1852, 64.9424, 64.9239 changes by changing the brightness by 10 percent. The first figure shows a shift by +10% for each color and the second figure -10%.

Similar to the brightness gradients but the following saturation gradients show a change of the XYZ color 66.1852, 64.9424, 64.9239 by changing the saturation by 10% instead.

66.1852, 64.9424,
64.9239

66.1852, 64.9424,
64.9239

436.5171,
442.5850, 460.8172

48.6910, 47.4144,
46.9484

112.8084,
111.9670, 113.5527

34.5880, 33.3634,
32.6408

142.6681,
142.2325, 145.0430

23.5107, 22.4049,
21.5826

177.3803,
177.5124, 181.8755

15.0938, 14.1547,
13.3551

217.3104,
218.1914, 224.4685

8.9720, 8.2284,
7.5400

262.8238,
264.6537, 273.2406

4.7799, 4.2414,
3.7185

314.2858,

2.1521, 1.8095,

317.2839, 328.6104

1.4722

372.0618,
376.4661, 390.9964

■ 0.7173, 0.4931,
0.1971

■ 0.0000, 0.0000,
0.0000

■ 66.1852, 64.9424,
64.9239

■ 66.1852, 64.9424,
64.9239

■ 58.7709, 54.2162,
49.8039

■ 74.7575, 77.3109,
82.5040

■ 52.4598, 45.0549,
37.0306

■ 84.5288, 91.3775,
102.6429

■ 47.2007, 37.3881,
26.4874

■ 87.7420, 96.2326,
108.5580

■ 42.9364, 31.1364,
18.0465

■ 39.6041, 26.2132,
11.5668

■ 37.1338, 22.5224,
6.8903

■ 35.4456, 19.9549,
3.8342

■ 34.4447, 18.3823,
2.1772

■ 34.0980, 17.8246,
1.6433

Harmonies

Analogous

The Analogous color harmony consists of three colors that are next to each other on the color wheel.



66.6637, 64.9424, 71.7993



66.1852, 64.9424, 64.9239



64.4996, 64.9424, 59.9191

Triad

The Triadic color harmony groups three colors that are evenly spaced from another and form a triangle on the color wheel.



66.1852, 64.9424, 64.9239



57.8325, 64.9424, 63.1687



61.3486, 64.9424, 85.4064

Complementary

The Complementary color scheme is a pair of colors which are on the opposite of each other on the color wheel.



66.1852, 64.9424, 64.9239



68.0646, 76.2087, 88.9649

Split Complementary

Split-complementary colors differ from the complementary color scheme. The scheme consists of three colors, the original color and two neighbors of the complement color.



59.0327, 64.9424, 82.7272



66.1852, 64.9424, 64.9239



57.0380, 64.9424, 69.6342

Square

The Square scheme is like the rectangle color scheme, but the four colors are evenly spaced on the color wheel.



66.1852, 64.9424, 64.9239



59.6705, 64.9424, 58.9549



57.4714, 64.9424, 76.8327



63.8278, 64.9424, 83.9349

Rectangle

The Rectangle color scheme consists of four colors that form a rectangle on the color wheel.



66.1852, 64.9424, 64.9239



62.9415, 64.9424, 58.1545



57.4714, 64.9424, 76.8327



60.5259, 64.9424, 84.9566

Sweetspot

The Sweet Spot groups the original color and five complimentary colors.



66.1870, 64.9453, 64.9253



90.4762, 93.4110, 99.4877



69.6753, 65.5833, 85.6294



19.1872, 19.7366, 20.9276



0.0000, 0.0000, 0.0000



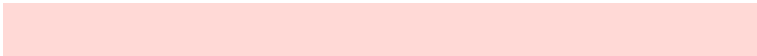
20.3446, 21.4041, 23.3091

Same Dimension

The Same Dimension uses a secret algorithm to generate beautiful new colors.



66.1870, 64.9453, 64.9253



78.1530, 75.6249, 74.2303



70.0814, 72.7342, 66.2234



15.1412, 15.2054, 15.6556



19.1914, 10.0770, 0.9336



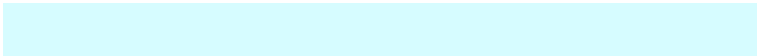
1.5337, 0.8447, 0.0822

Inverse Universe

The Inverse Universe completely reimagines the original color for something new.



68.0646, 76.2087, 88.9649



80.7902, 91.4467, 108.0006



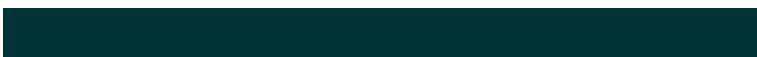
63.8677, 67.8149, 87.5659



15.4322, 16.9508, 19.3807



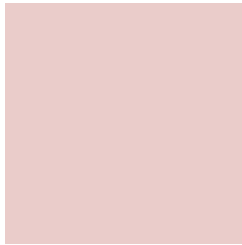
22.6662, 31.9793, 48.7210



1.8043, 2.5601, 3.8339

Previews

White Background



This preview shows how the XYZ color 66.1852, 64.9424, 64.9239 looks on a white background.

Color Contrast Check

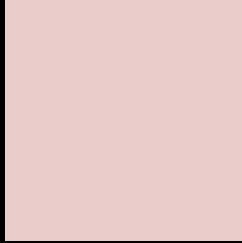
Large Text (above 18pt) WCAG AA × Fail

Any Text WCAG AA × Fail

Large Text (above 18pt) WCAG AAA × Fail

Any Text WCAG AAA × Fail

Black Background



This preview shows how the XYZ color 66.1852, 64.9424, 64.9239 looks on a black background.

Color Contrast Check

Large Text (above 18pt) WCAG AA ✓ Pass

Any Text WCAG AA ✓ Pass

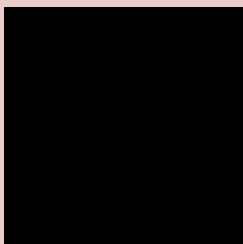
Large Text (above 18pt) WCAG AAA ✓ Pass

Any Text WCAG AAA ✓ Pass

If you want to check with other color combinations, try the [Color Contrast Checker](#).

XYZ 66.1852, 64.9424, 64.9239

Background



This preview shows how black text looks on a background with the XYZ color 66.1852, 64.9424, 64.9239.

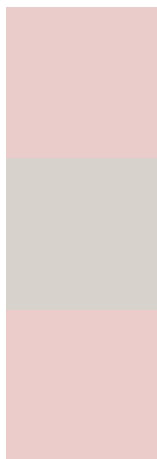


This preview shows how white text looks on a background with the XYZ color 66.1852, 64.9424,

Color Blindness Simulation

Color vision deficiency is a very complex topic, and I could not describe the different causes any better than Wikipedia does, so if you want to learn more, you should check out their [article about color blindness](#).

Dichromacy



Original Color

66.1852, 64.9424, 64.9239

Protanopia

62.3849, 65.0999, 67.0351

Deuteranopia

66.5145, 65.1122, 64.9393



Tritanopia

68.2370, 65.0837, 74.6116

Trichromacy



Original Color

66.1852, 64.9424, 64.9239

Protanomaly

63.8864, 65.1594, 66.3366

Deuteranomaly

66.5145, 65.1122, 64.9393

Tritanomaly

67.5006, 65.1275, 71.3006

Monochromacy



Original Color

66.1852, 64.9424, 64.9239

Achromatopsia

63.2451, 66.5387, 72.4607

Achromatomaly

64.3740, 66.0688, 69.6813

CSS Examples

Text

The CSS property to change the color of the text to XYZ 66.1852, 64.9424, 64.9239 is called "color". The color property can be set on classes, ids or directly on the HTML element.

This example shows how text in the color rgb(234, 204, 202) looks like.

```
.text, #text, p{  
    color:rgb(234, 204, 202)  
}
```

If you want to add a text shadow in that color use the text-shadow property, you can generate a text shadow directly with our [CSS Text Shadow Generator](#).

Here you see how black text with a 4 pixel rgb(234, 204, 202) colored shadow looks like.

```
.shadow{ text-shadow: 4px 4px 2px rgb(234, 204, 202) }
```

Border

The CSS property to change the border of an element to XYZ 66.1852, 64.9424, 64.9239 is called "border". The border property can be set on classes, ids or directly on the HTML element.

This example shows the color as border, it can be applied via the CSS property "border" or "border-color".

```
.border, #border, table{ border:4px solid rgb(234, 204, 202) }
```


If only the border color should be changed use the property `border-color`.

```
.border{ border-color:rgb(234, 204, 202) }
```

If you want to add a box shadow in that color use:

Here you see how a box with a 4 pixel `rgb(234, 204, 202)` colored shadow looks like.

```
.boxshadow{ -moz-box-shadow:4px 4px 4px  
4px rgb(234, 204, 202); -webkit-box-  
shadow:4px 4px 4px 4px rgb(234, 204, 202);  
box-shadow:4px 4px 4px 4px rgb(234, 204,  
202) }
```

Background

The CSS property to change the background color of an element to XYZ 66.1852, 64.9424, 64.9239 is called "background". The background property can be set on classes, ids or directly on the HTML element.

```
.background, #background, body{  
background: rgb(234, 204, 202) }
```

If only the background color should be changed can be used:

```
.background{ background-color: rgb(234,  
204, 202) }
```

This example shows the color as background, it is applied via the CSS property "background".

To optimize and compress your CSS code, you can use our [online CSS compressor and optimizer](#) based on csstidy. If you want to create a linear or radial gradient as background or border, check our [CSS Gradient Generator](#).

Hey! You found this booklet interesting? Support Converting Colors with the new Membership Option!

The pro membership hides all ads, plus gives you double the colors in the color bucket, and more awesome pro features!

[Learn more, Memberships starting at \\$2.50/m!](#)

**Follow me
on Twitter!**

@ConvertingColor