

# Converting Colors

XYZ(66.0790, 64.4545, 52.6743)

Have a look what the booklet for  
XYZ(66.0790, 64.4545, 52.6743)  
contains.

<b>XYZ(66.0790, 64.4545, 52.6743)</b> .....	3
<b><i>Conversions</i></b> .....	4
<b><i>Details</i></b> .....	6
<b><i>Harmonies</i></b> .....	12
<b><i>Previews</i></b> .....	24
<b><i>Color Blindness Simulation</i></b> .....	28
<b><i>CSS Examples</i></b> .....	31

# Color

**XYZ(66.0790, 64.4545,  
52.6743)**

# Conversions

## Conversions Part 1

Format	Color
Hex	F2CAB5
RGB	242, 202, 181
RGB Percent	95%, 79%, 71%
CMY	0.0510, 0.2078, 0.2902
CMYK	0.00, 0.17, 0.25, 0.05
HSL	21°, 70%, 83%
HSV	21°, 25%, 95%
XYZ	66.0790, 64.4545, 52.6743
YIQ	211.5660, 30.5810, 1.9490

# Conversions

## Conversions Part 2

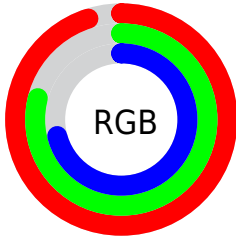
<b>Format</b>	<b>Color</b>
<b>R<sub>YB</sub></b>	242, 213, 181
Decimal	15911605
CIE <sub>Lab</sub>	84.20, 11.04, 15.76
CIE <sub>LCh</sub>	84, 19.238, 54.996
Yxy	64.4545, 0.3607, 0.3518
Android (android.graphics.Color)	4294101685 (0xFFFF2CAB5)
YUV	211.5660, -15.0690, 26.6906
Hunter-Lab	80.2836, 6.4218, 17.2981

# Details

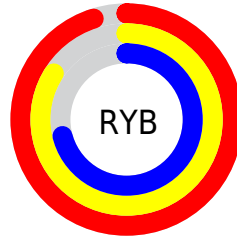
The XYZ color **66.0790, 64.4545, 52.6743** is a light color, and the websafe version is hex **FFCCCC**. A complement of this color would be **60.9390, 67.9457, 93.9078**, and the grayscale version is **62.3753, 65.6237, 71.4642**.

A 20% lighter version of the original color is **92.2861, 98.8944, 94.3453**, and **34.4938, 33.0526, 24.9838** is the 20% darker color. If you saturate the color by 10%, you get **60.2752, 56.4813, 39.5347**, and if you desaturate by 10%, it is **72.7004, 73.3718, 68.2158**.

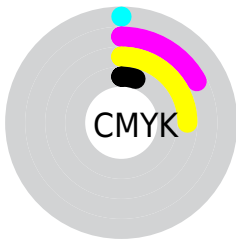
# Distribution



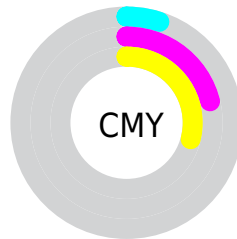
- Red (95%)
- Green (79%)
- Blue (71%)



- Red (95%)
- Yellow (84%)
- Blue (71%)



- Cyan (0%)
- Magenta (17%)
- Yellow (25%)
- Black (5%)




- Cyan (5%)
- Magenta (21%)
- Yellow (29%)


# Brightness & Saturation Gradients

These gradients show how the XYZ color 66.0790, 64.4545, 52.6743 changes by changing the brightness by 10 percent. The first figure shows a shift by +10% for each color and the second figure -10%.


Similar to the brightness gradients but the following saturation gradients show a change of the XYZ color 66.0790, 64.4545, 52.6743 by changing the saturation by 10% instead.





 66.0790, 64.4545,  
52.6743

 66.0790, 64.4545,  
52.6743


436.1435,  
440.8291, 414.0651

 48.6045, 47.0189,  
37.1569


 112.6568,  
111.2652, 95.5616

 34.5191, 33.0506,  
25.0322


142.4908,  
141.4091, 123.7686

 23.4574, 22.1652,  
15.8818


177.1754,  
176.5579, 157.0425

 15.0542, 13.9783,  
9.2871

217.0758,  
217.0960, 195.8019

 8.9440, 8.1056,  
4.8296

262.5575,  
263.4078, 240.4653

 4.7615, 4.1626,  
2.0906

313.9857,

 2.1413, 1.7649,

315.8776, 291.4513

0.6102

371.7260,  
374.8899, 349.1784

■ 0.7115, 0.4652,  
0.0000

■ 0.0000, 0.0000,  
0.0000

■ 66.0790, 64.4545,  
52.6743

■ 66.0790, 64.4545,  
52.6743

■ 60.2752, 56.4813,  
39.5347

■ 72.7004, 73.3718,  
68.2158

■ 55.2500, 49.4113,  
28.6716

■ 80.1660, 83.2546,  
86.2677

■ 50.9689, 43.2137,  
19.9544

■ 88.5074, 94.1348,  
106.9369

■ 47.3921, 37.8523,  
13.2373

■ 90.4281, 97.6173,  
108.6837

■ 44.4760, 33.2880,  
8.3562

■ 42.1708, 29.4780,  
5.1204

■ 40.4178, 26.3743,  
3.2957

■ 39.7367, 25.1145,  
2.7532

# Harmonies

## Analogous

The Analogous color harmony consists of three colors that are next to each other on the color wheel.



68.9852, 64.4545, 60.7320



66.0790, 64.4545, 52.6743



61.9789, 64.4545, 49.3194

# Triad

The Triadic color harmony groups three colors that are evenly spaced from another and form a triangle on the color wheel.



66.0790, 64.4545, 52.6743



53.4635, 64.4545, 68.1549



64.7868, 64.4545, 93.6458

# Complementary

The Complementary color scheme is a pair of colors which are on the opposite of each other on the color wheel.



66.0790, 64.4545, 52.6743



60.9390, 67.9457, 93.9078

# Split Complementary

Split-complementary colors differ from the complementary color scheme. The scheme consists of three colors, the original color and two neighbors of the complement color.



60.5508, 64.4545, 96.2223



66.0790, 64.4545, 52.6743



54.1380, 64.4545, 80.5603

# Square

The Square scheme is like the rectangle color scheme, but the four colors are evenly spaced on the color wheel.



66.0790, 64.4545, 52.6743



54.7982, 64.4545, 57.5720



56.6851, 64.4545, 91.1890



68.2152, 64.4545, 84.5061



# Rectangle

The Rectangle color scheme consists of four colors that form a rectangle on the color wheel.



66.0790, 64.4545, 52.6743



59.1681, 64.4545, 49.8821



56.6851, 64.4545, 91.1890



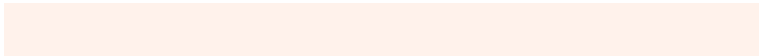
63.4048, 64.4545, 95.3498

# Sweetspot

The Sweet Spot groups the original color and five complimentary colors.



66.0807, 64.4575, 52.6756



87.8181, 90.5160, 91.1374



66.2826, 57.1819, 76.4176



18.5207, 19.0097, 18.8374



0.0000, 0.0000, 0.0000



20.3446, 21.4041, 23.3091



# Same Dimension

The Same Dimension uses a secret algorithm to generate beautiful new colors.



66.0807, 64.4575, 52.6756



71.1197, 68.0816, 51.7758



73.7687, 79.8334, 55.2383



16.2178, 16.6487, 16.5085



21.4612, 13.7205, 1.5172



1.8748, 1.3202, 0.1560

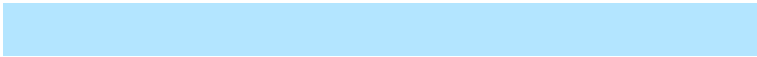


# Inverse Universe

The Inverse Universe completely reimagines the original color for something new.



60.9390, 67.9457, 93.9078



64.4498, 72.5938, 105.2229



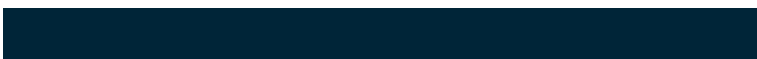
53.7510, 53.5698, 91.5118



15.7625, 16.9591, 20.1643



15.3720, 16.9683, 47.5929

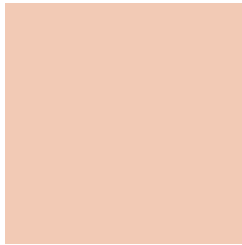


1.3711, 1.5961, 3.9900



# Previews

## White Background



This preview shows how the XYZ color 66.0790, 64.4545, 52.6743 looks on a white background.

## Color Contrast Check

Large Text (above 18pt) WCAG AA × Fail

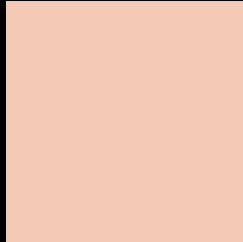
Any Text WCAG AA × Fail

Large Text (above 18pt) WCAG AAA × Fail

Any Text WCAG AAA × Fail



# Black Background



This preview shows how the XYZ color 66.0790, 64.4545, 52.6743 looks on a black background.

## Color Contrast Check

Large Text (above 18pt) WCAG AA ✓ Pass

Any Text WCAG AA ✓ Pass

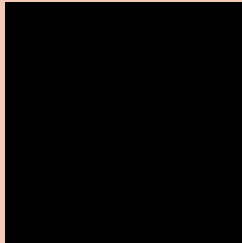
Large Text (above 18pt) WCAG AAA ✓ Pass

Any Text WCAG AAA ✓ Pass

If you want to check with other color combinations, try the [Color Contrast Checker](#).

**XYZ 66.0790, 64.4545, 52.6743**

## **Background**



This preview shows how black text looks on a background with the XYZ color 66.0790, 64.4545, 52.6743.



This preview shows how white text looks on a background with the XYZ color 66.0790, 64.4545,



# Color Blindness Simulation

Color vision deficiency is a very complex topic, and I could not describe the different causes any better than Wikipedia does, so if you want to learn more, you should check out their [article about color blindness](#).

## Dichromacy



### Original Color

66.0790, 64.4545, 52.6743

### Protanopia

61.3187, 64.8116, 55.1770

### Deuteranopia

65.7366, 64.2780, 52.6583



## Tritanopia

69.9825, 64.3294, 71.6791

# Trichromacy



## Original Color

66.0790, 64.4545, 52.6743

## Protanomaly

62.9595, 64.5803, 54.4943

## Deuteranomaly

65.7366, 64.2780, 52.6583

## Tritanomaly

68.6222, 64.4764, 64.0867

# Monochromacy



## Original Color

66.0790, 64.4545, 52.6743

## Achromatopsia

62.5785, 65.8375, 71.6970

## Achromatomaly

63.5299, 65.0168, 64.4594

# CSS Examples

## Text

The CSS property to change the color of the text to XYZ 66.0790, 64.4545, 52.6743 is called "color". The color property can be set on classes, ids or directly on the HTML element.

This example shows how text in the color `rgb(242, 202, 181)` looks like.

```
.text, #text, p{  
    color:rgb(242, 202, 181)  
}
```

If you want to add a text shadow in that color use the text-shadow property, you can generate a text shadow directly with our [CSS Text Shadow Generator](#).

Here you see how black text with a 4 pixel rgb(242, 202, 181) colored shadow looks like.

```
.shadow{ text-shadow: 4px 4px 2px rgb(242, 202, 181) }
```

## Border

The CSS property to change the border of an element to XYZ 66.0790, 64.4545, 52.6743 is called "border". The border property can be set on classes, ids or directly on the HTML element.

This example shows the color as border, it can be applied via the CSS property "border" or "border-color".

```
.border, #border, table{ border:4px solid rgb(242, 202, 181) }
```



If only the border color should be changed use the property border-color.

```
.border{ border-color:rgb(242, 202, 181) }
```

If you want to add a box shadow in that color use:

Here you see how a box with a 4 pixel rgb(242, 202, 181) colored shadow looks like.

```
.boxshadow{ -moz-box-shadow:4px 4px 4px  
4px rgb(242, 202, 181); -webkit-box-  
shadow:4px 4px 4px 4px rgb(242, 202, 181);  
box-shadow:4px 4px 4px 4px rgb(242, 202,  
181) }
```

# Background

The CSS property to change the background color of an element to XYZ 66.0790, 64.4545, 52.6743 is called "background". The background property can be set on classes, ids or directly on the HTML element.

```
.background, #background, body{  
background: rgb(242, 202, 181) }
```

If only the background color should be changed can be used:

```
.background{ background-color: rgb(242,  
202, 181) }
```

This example shows the color as background, it is applied via the CSS property "background".

To optimize and compress your CSS code, you can use our [online CSS compressor and optimizer](#) based on csstidy. If you want to create a linear or radial gradient as background or border, check our [CSS Gradient Generator](#).

Hey! You found this booklet interesting? Support Converting Colors with the new Membership Option!

The pro membership hides all ads, plus gives you double the colors in the color bucket, and more awesome pro features!

**[Learn more, Memberships starting at \\$2.50/m!](#)**

**Follow me  
on Twitter!**

@ConvertingColor