

Converting Colors

XYZ(66.2762, 64.0406, 61.6838)

Have a look what the booklet for
XYZ(66.2762, 64.0406, 61.6838)
contains.

XYZ(66.2246, 63.9816, 61.6826)	3
<i>Conversions</i>	4
<i>Details</i>	6
<i>Harmonies</i>	12
<i>Previews</i>	24
<i>Color Blindness Simulation</i>	28
<i>CSS Examples</i>	31

Color

**XYZ(66.2246, 63.9816,
61.6826)**

Conversions

Conversions Part 1

Format	Color
Hex	EEC9C5
RGB	238, 201, 197
RGB Percent	93%, 79%, 77%
CMY	0.0667, 0.2117, 0.2274
CMYK	0.00, 0.16, 0.17, 0.07
HSL	6°, 55%, 85%
HSV	6°, 17%, 93%
XYZ	66.2246, 63.9816, 61.6826
YIQ	211.6070, 23.3360, 6.6000

Conversions

Conversions Part 2

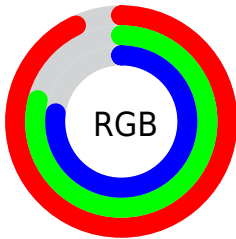
Format	Color
R _Y B	238, 201, 197
Decimal	15649221
CIE Lab	83.96, 12.42, 6.85
CIE LCh	84, 14.184, 28.883
Yxy	63.9816, 0.3451, 0.3334
Android (android.graphics.Color)	4293839301 (0xFFEEC9C5)
YUV	211.6070, -7.2013, 23.1467
Hunter-Lab	79.9885, 7.8050, 10.2709

Details

The XYZ color **66.2246, 63.9816, 61.6826** is a light color, and the websafe version is hex **FFCCCC**. A complement of this color would be **67.8810, 76.8874, 92.1526**, and the grayscale version is **62.3553, 65.6026, 71.4413**.

A 20% lighter version of the original color is **94.8894, 99.9358, 108.0543**, and **34.6830, 32.7957, 30.4888** is the 20% darker color. If you saturate the color by 10%, you get **59.0490, 53.6553, 46.8817**, and if you desaturate by 10%, it is **74.5342, 75.8858, 78.9871**.

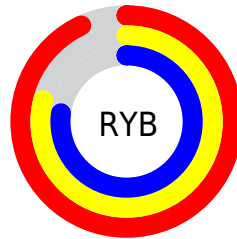
Distribution



Red (93%)

Green (79%)

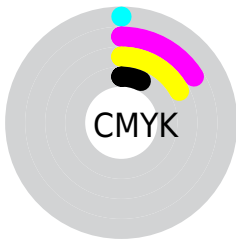
Blue (77%)



Red (93%)

Yellow (79%)

Blue (77%)

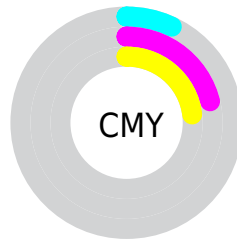


Cyan (0%)

Magenta (16%)

Yellow (17%)

Black (7%)



Cyan (7%)

Magenta (21%)

Yellow (23%)

Brightness & Saturation Gradients

These gradients show how the XYZ color 66.2246, 63.9816, 61.6826 changes by changing the brightness by 10 percent. The first figure shows a shift by +10% for each color and the second figure -10%.

Similar to the brightness gradients but the following saturation gradients show a change of the XYZ color 66.2246, 63.9816, 61.6826 by changing the saturation by 10% instead.

66.2246, 63.9816,
61.6826

66.2246, 63.9816,
61.6826

436.6557,
439.1232, 448.7480

48.7231, 46.6358,
44.3422

112.8646,
110.5844, 108.8338

34.6135, 32.7478,
30.6004

142.7338,
140.6102, 139.4816

23.5304, 21.9333,
20.0389

177.4563,
175.6315, 175.4024

15.1085, 13.8079,
12.2389

217.3975,
216.0326, 217.0145

8.9824, 7.9872,
6.7821

262.9226,
262.1979, 264.7366

4.7867, 4.0868,
3.2498

314.3971,

2.1561, 1.7222,

314.5118, 318.9872

1.2236

372.1864,
373.3588, 380.1848

0.7195, 0.4380,
0.0000

0.0000, 0.0000,
0.0000

66.2246, 63.9816,
61.6826

66.2246, 63.9816,
61.6826

59.0490, 53.6553,
46.8817

74.5342, 75.8858,
78.9871

52.9532, 44.8323,
34.4646

84.0186, 89.4210,
98.8994

47.8863, 37.4451,
24.3078

89.0702, 96.9173,
108.6201

43.7911, 31.4176,
16.2749

■ 40.6050, 26.6666,
10.2150

■ 38.2579, 23.0999,
5.9571

■ 36.6694, 20.6125,
3.3012

■ 35.7406, 19.0803,
1.9887

■ 35.5715, 18.7998,
1.7539

Harmonies

Analogous

The Analogous color harmony consists of three colors that are next to each other on the color wheel.



67.0173, 63.9816, 70.0010



66.2246, 63.9816, 61.6826



63.9696, 63.9816, 55.9524

Triad

The Triadic color harmony groups three colors that are evenly spaced from another and form a triangle on the color wheel.



66.2246, 63.9816, 61.6826



55.8143, 63.9816, 61.1486



60.6956, 63.9816, 88.3167

Complementary

The Complementary color scheme is a pair of colors which are on the opposite of each other on the color wheel.



66.2246, 63.9816, 61.6826



67.8810, 76.8874, 92.1526

Split Complementary

Split-complementary colors differ from the complementary color scheme. The scheme consists of three colors, the original color and two neighbors of the complement color.



57.7612, 63.9816, 85.4530



66.2246, 63.9816, 61.6826



55.0032, 63.9816, 69.3303

Square

The Square scheme is like the rectangle color scheme, but the four colors are evenly spaced on the color wheel.



66.2246, 63.9816, 61.6826



57.9574, 63.9816, 55.6631



55.7038, 63.9816, 78.3082



63.7600, 63.9816, 85.8378

Rectangle

The Rectangle color scheme consists of four colors that form a rectangle on the color wheel.



66.2246, 63.9816, 61.6826



61.9780, 63.9816, 54.1133



55.7038, 63.9816, 78.3082



59.6619, 63.9816, 87.9430

Sweetspot

The Sweet Spot groups the original color and five complimentary colors.



66.2264, 63.9845, 61.6839



89.5036, 92.0838, 97.2580



70.1622, 64.0846, 86.9543



18.9966, 19.4800, 20.4804



0.0000, 0.0000, 0.0000



20.3446, 21.4041, 23.3091

Same Dimension

The Same Dimension uses a secret algorithm to generate beautiful new colors.



66.2264, 63.9845, 61.6839



74.0710, 69.9689, 65.1377



71.1732, 73.8781, 63.3329



15.8970, 16.0070, 16.4015



19.8867, 10.5714, 0.9923



1.6960, 0.9626, 0.0964

Inverse Universe

The Inverse Universe completely reimagines the original color for something new.



67.8810, 76.8874, 92.1526



76.3728, 87.9284, 107.5543



62.5271, 66.1796, 90.3680



16.1077, 17.6496, 20.2794



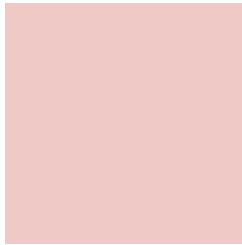
22.1860, 30.5962, 49.8642



1.8836, 2.6212, 4.1609

Previews

White Background



This preview shows how the XYZ color 66.2246, 63.9816, 61.6826 looks on a white background.

Color Contrast Check

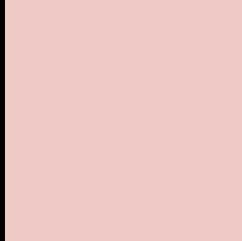
Large Text (above 18pt) WCAG AA × Fail

Any Text WCAG AA × Fail

Large Text (above 18pt) WCAG AAA × Fail

Any Text WCAG AAA × Fail

Black Background



This preview shows how the XYZ color 66.2246, 63.9816, 61.6826 looks on a black background.

Color Contrast Check

Large Text (above 18pt) WCAG AA ✓ Pass

Any Text WCAG AA ✓ Pass

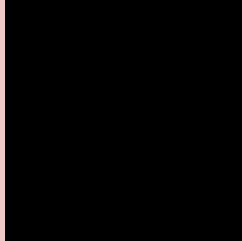
Large Text (above 18pt) WCAG AAA ✓ Pass

Any Text WCAG AAA ✓ Pass

If you want to check with other color combinations, try the [Color Contrast Checker](#).

XYZ 66.2246, 63.9816, 61.6826

Background



This preview shows how black text looks on a background with the XYZ color 66.2246, 63.9816, 61.6826.



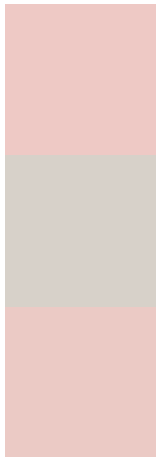
This preview shows how white text looks on a background with the XYZ color 66.2246, 63.9816,

61.6826.

Color Blindness Simulation

Color vision deficiency is a very complex topic, and I could not describe the different causes any better than Wikipedia does, so if you want to learn more, you should check out their [article about color blindness](#).

Dichromacy



Original Color

66.2246, 63.9816, 61.6826

Protanopia

61.3674, 64.2650, 64.4283

Deuteranopia

65.4595, 63.9344, 61.7138



Tritanopia

68.2669, 63.7685, 72.3288

Trichromacy



Original Color

66.2246, 63.9816, 61.6826

Protanomaly

62.9281, 64.0007, 63.6803

Deuteranomaly

65.7906, 64.1051, 61.7293

Tritanomaly

67.4052, 63.7516, 68.4272

Monochromacy



Original Color

66.2246, 63.9816, 61.6826

Achromatopsia

62.5785, 65.8375, 71.6970

Achromatomaly

63.6372, 64.9889, 68.2216

CSS Examples

Text

The CSS property to change the color of the text to XYZ 66.2246, 63.9816, 61.6826 is called "color". The color property can be set on classes, ids or directly on the HTML element.

This example shows how text in the color `rgb(238, 201, 197)` looks like.

```
.text, #text, p{  
    color:rgb(238, 201, 197)  
}
```

If you want to add a text shadow in that color use the text-shadow property, you can generate a text shadow directly with our [CSS Text Shadow Generator](#).

Here you see how black text with a 4 pixel rgb(238, 201, 197) colored shadow looks like.

```
.shadow{ text-shadow: 4px 4px 2px rgb(238, 201, 197) }
```

Border

The CSS property to change the border of an element to XYZ 66.2246, 63.9816, 61.6826 is called "border". The border property can be set on classes, ids or directly on the HTML element.

This example shows the color as border, it can be applied via the CSS property "border" or "border-color".

```
.border, #border, table{ border:4px solid rgb(238, 201, 197) }
```


If only the border color should be changed use the property `border-color`.

```
.border{ border-color:rgb(238, 201, 197) }
```

If you want to add a box shadow in that color use:

Here you see how a box with a 4 pixel `rgb(238, 201, 197)` colored shadow looks like.

```
.boxshadow{ -moz-box-shadow:4px 4px 4px  
4px rgb(238, 201, 197); -webkit-box-  
shadow:4px 4px 4px 4px rgb(238, 201, 197);  
box-shadow:4px 4px 4px 4px rgb(238, 201,  
197) }
```

Background

The CSS property to change the background color of an element to XYZ 66.2246, 63.9816, 61.6826 is called "background". The background property can be set on classes, ids or directly on the HTML element.

```
.background, #background, body{  
background: rgb(238, 201, 197) }
```

If only the background color should be changed can be used:

```
.background{ background-color: rgb(238,  
201, 197) }
```

This example shows the color as background, it is applied via the CSS property "background".

To optimize and compress your CSS code, you can use our [online CSS compressor and optimizer](#) based on csstidy. If you want to create a linear or radial gradient as background or border, check our [CSS Gradient Generator](#).

Hey! You found this booklet interesting? Support Converting Colors with the new Membership Option!

The pro membership hides all ads, plus gives you double the colors in the color bucket, and more awesome pro features!

[Learn more, Memberships starting at \\$2.50/m!](#)

**Follow me
on Twitter!**

@ConvertingColor