

Converting Colors

XYZ(66.2836, 66.4298, 68.0722)

Have a look what the booklet for
XYZ(66.2836, 66.4298, 68.0722)
contains.

XYZ(66.4515, 66.4397, 68.3533)	3
<i>Conversions</i>	4
<i>Details</i>	6
<i>Harmonies</i>	12
<i>Previews</i>	24
<i>Color Blindness Simulation</i>	28
<i>CSS Examples</i>	31

Color

**XYZ(66.4515, 66.4397,
68.3533)**

Conversions

Conversions Part 1

Format	Color
Hex	E6D0CF
RGB	230, 208, 207
RGB Percent	90%, 82%, 81%
CMY	0.0980, 0.1843, 0.1882
CMYK	0.00, 0.10, 0.10, 0.10
HSL	3°, 32%, 86%
HSV	3°, 10%, 90%
XYZ	66.4515, 66.4397, 68.3533
YIQ	214.4640, 13.4330, 4.3530

Conversions

Conversions Part 2

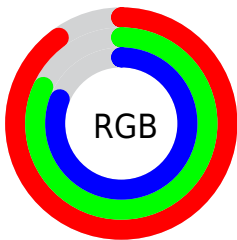
Format	Color
R _Y B	230, 208, 207
Decimal	15126735
CIE Lab	85.22, 7.48, 3.27
CIE LCh	85, 8.160, 23.609
Yxy	66.4397, 0.3302, 0.3301
Android (android.graphics.Color)	4293316815 (0xFFE6D0CF)
YUV	214.4640, -3.6798, 13.6251
Hunter-Lab	81.5106, 2.8787, 7.3378

Details

The XYZ color **66.4515, 66.4397, 68.3533** is a light color, and the websafe version is hex **CCCCCC**. A complement of this color would be **68.0342, 75.0160, 85.7575**, and the grayscale version is **64.2483, 67.5943, 73.6101**.

A 20% lighter version of the original color is **95.0500, 100.0000, 108.9000**, and **34.7609, 34.4098, 34.9466** is the 20% darker color. If you saturate the color by 10%, you get **58.8462, 55.4056, 52.9410**, and if you desaturate by 10%, it is **75.2139, 79.1310, 86.1737**.

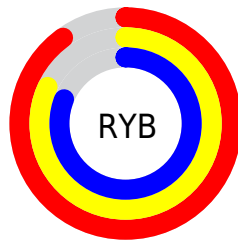
Distribution



Red (90%)

Green (82%)

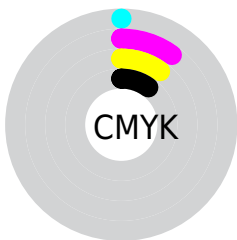
Blue (81%)



Red (90%)

Yellow (82%)

Blue (81%)

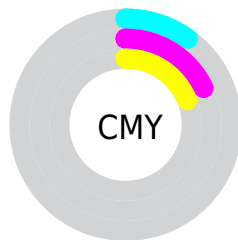


Cyan (0%)

Magenta (10%)

Yellow (10%)

Black (10%)



Cyan (10%)

Magenta (18%)

Yellow (19%)

Brightness & Saturation Gradients

These gradients show how the XYZ color 66.4515, 66.4397, 68.3533 changes by changing the brightness by 10 percent. The first figure shows a shift by +10% for each color and the second figure -10%.

Similar to the brightness gradients but the following saturation gradients show a change of the XYZ color 66.4515, 66.4397, 68.3533 by changing the saturation by 10% instead.

66.4515, 66.4397,
68.3533

66.4515, 66.4397,
68.3533

437.4531,
447.9478, 473.3788

48.9081, 48.6294,
49.7167

113.1883,
114.1172, 118.5164

34.7608, 34.3256,
34.8188

143.1123,
144.7532, 150.8800

23.6443, 23.1439,
23.2409

177.8939,
180.4332, 188.6564

15.1933, 14.6998,
14.5645

217.8985,
221.5417, 232.2641

9.0424, 8.6089,
8.3711

263.4913,
268.4630, 282.1217

4.8262, 4.4870,
4.2422

315.0378,

2.1793, 1.9495,

321.5815, 338.6476

1.7591

372.9033,
381.2816, 402.2604

■ 0.7318, 0.5779,
0.4008

■ 0.0000, 0.0000,
0.0000

■ 66.4515, 66.4397,
68.3533

■ 66.4515, 66.4397,
68.3533

■ 58.8462, 55.4056,
52.9410

■ 75.2139, 79.1310,
86.1737

■ 52.3444, 45.9520,
39.8296

■ 85.1731, 93.5346,
106.4949

■ 46.8965, 38.0092,
28.9100

■ 86.4435, 95.5632,
108.4972

■ 42.4470, 31.4989,
20.0627

■ 38.9352, 26.3358,
13.1566

■ 36.2941, 22.4256,
8.0460

■ 34.4473, 19.6617,
4.5644

■ 33.3056, 17.9200,
2.5141

■ 32.7425, 17.0411,
1.5636

Harmonies

Analogous

The Analogous color harmony consists of three colors that are next to each other on the color wheel.



66.7359, 66.4397, 73.4770



66.4515, 66.4397, 68.3533



65.2745, 66.4397, 64.4767

Triad

The Triadic color harmony groups three colors that are evenly spaced from another and form a triangle on the color wheel.



66.4515, 66.4397, 68.3533



60.3395, 66.4397, 66.4866



62.7553, 66.4397, 82.9016

Complementary

The Complementary color scheme is a pair of colors which are on the opposite of each other on the color wheel.



66.4515, 66.4397, 68.3533



68.0342, 75.0160, 85.7575

Split Complementary

Split-complementary colors differ from the complementary color scheme. The scheme consists of three colors, the original color and two neighbors of the complement color.



61.0700, 66.4397, 80.8213



66.4515, 66.4397, 68.3533



59.6928, 66.4397, 71.2178

Square

The Square scheme is like the rectangle color scheme, but the four colors are evenly spaced on the color wheel.



66.4515, 66.4397, 68.3533



61.7406, 66.4397, 63.4362



59.9577, 66.4397, 76.4820



64.5786, 66.4397, 82.0436

Rectangle

The Rectangle color scheme consists of four colors that form a rectangle on the color wheel.



66.4515, 66.4397, 68.3533



64.1541, 66.4397, 63.0368



59.9577, 66.4397, 76.4820



62.1543, 66.4397, 82.5196

Sweetspot

The Sweet Spot groups the original color and five complimentary colors.



66.4534, 66.4426, 68.3547



91.5529, 94.9376, 101.7786



69.1223, 67.1198, 83.6128



19.4010, 20.0381, 21.3878



0.0000, 0.0000, 0.0000



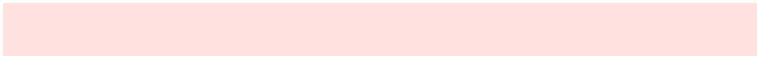
20.3446, 21.4041, 23.3091

Same Dimension

The Same Dimension uses a secret algorithm to generate beautiful new colors.



66.4534, 66.4426, 68.3547



81.8734, 80.9126, 82.1083



69.2977, 72.1312, 69.3028



14.4272, 14.4683, 14.9367



18.5596, 9.6934, 0.8928



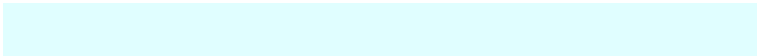
1.3894, 0.7521, 0.0719

Inverse Universe

The Inverse Universe completely reimagines the original color for something new.



68.0342, 75.0160, 85.7575



84.2500, 93.8021, 108.2729



65.0183, 68.9842, 84.7522



14.7507, 16.2228, 18.4982



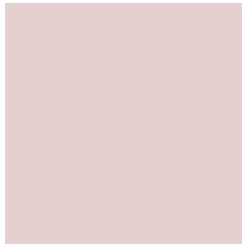
22.5942, 32.2505, 47.4173



1.6864, 2.4168, 3.5096

Previews

White Background



This preview shows how the XYZ color 66.4515, 66.4397, 68.3533 looks on a white background.

Color Contrast Check

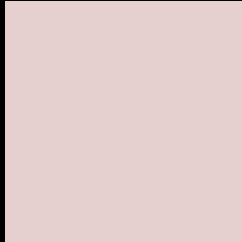
Large Text (above 18pt) WCAG AA × Fail

Any Text WCAG AA × Fail

Large Text (above 18pt) WCAG AAA × Fail

Any Text WCAG AAA × Fail

Black Background



This preview shows how the XYZ color 66.4515, 66.4397, 68.3533 looks on a black background.

Color Contrast Check

Large Text (above 18pt) WCAG AA ✓ Pass

Any Text WCAG AA ✓ Pass

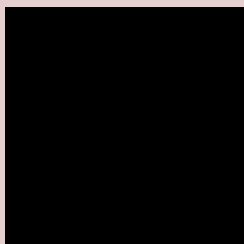
Large Text (above 18pt) WCAG AAA ✓ Pass

Any Text WCAG AAA ✓ Pass

If you want to check with other color combinations, try the [Color Contrast Checker](#).

XYZ 66.4515, 66.4397, 68.3533

Background



This preview shows how black text looks on a background with the XYZ color 66.4515, 66.4397, 68.3533.



This preview shows how white text looks on a background with the XYZ color 66.4515, 66.4397,

Color Blindness Simulation

Color vision deficiency is a very complex topic, and I could not describe the different causes any better than Wikipedia does, so if you want to learn more, you should check out their [article about color blindness](#).

Dichromacy



Original Color

66.4515, 66.4397, 68.3533

Protanopia

63.9655, 66.5958, 69.8045

Deuteranopia

67.9259, 66.4805, 68.2834



Tritanopia

68.5348, 66.5723, 78.3448

Trichromacy



Original Color

66.4515, 66.4397, 68.3533

Protanomaly

64.8036, 66.6722, 69.1280

Deuteranomaly

67.5070, 66.6231, 68.3330

Tritanomaly

67.7922, 66.6243, 74.9324

Monochromacy



Original Color

66.4515, 66.4397, 68.3533

Achromatopsia

63.9157, 67.2443, 73.2291

Achromatomaly

64.8166, 67.0058, 71.1452

CSS Examples

Text

The CSS property to change the color of the text to XYZ 66.4515, 66.4397, 68.3533 is called "color". The color property can be set on classes, ids or directly on the HTML element.

This example shows how text in the color `rgb(230, 208, 207)` looks like.

```
.text, #text, p{  
    color:rgb(230, 208, 207)  
}
```

If you want to add a text shadow in that color use the text-shadow property, you can generate a text shadow directly with our [CSS Text Shadow Generator](#).

Here you see how black text with a 4 pixel rgb(230, 208, 207) colored shadow looks like.

```
.shadow{ text-shadow: 4px 4px 2px rgb(230, 208, 207) }
```

Border

The CSS property to change the border of an element to XYZ 66.4515, 66.4397, 68.3533 is called "border". The border property can be set on classes, ids or directly on the HTML element.

This example shows the color as border, it can be applied via the CSS property "border" or "border-color".

```
.border, #border, table{ border:4px solid rgb(230, 208, 207) }
```


If only the border color should be changed use the property `border-color`.

```
.border{ border-color:rgb(230, 208, 207) }
```

If you want to add a box shadow in that color use:

Here you see how a box with a 4 pixel `rgb(230, 208, 207)` colored shadow looks like.

```
.boxshadow{ -moz-box-shadow:4px 4px 4px  
4px rgb(230, 208, 207); -webkit-box-  
shadow:4px 4px 4px 4px rgb(230, 208, 207);  
box-shadow:4px 4px 4px 4px rgb(230, 208,  
207) }
```

Background

The CSS property to change the background color of an element to XYZ 66.4515, 66.4397, 68.3533 is called "background". The background property can be set on classes, ids or directly on the HTML element.

```
.background, #background, body{  
background: rgb(230, 208, 207) }
```

If only the background color should be changed can be used:

```
.background{ background-color: rgb(230,  
208, 207) }
```

This example shows the color as background, it is applied via the CSS property "background".

To optimize and compress your CSS code, you can use our [online CSS compressor and optimizer](#) based on csstidy. If you want to create a linear or radial gradient as background or border, check our [CSS Gradient Generator](#).

Hey! You found this booklet interesting? Support Converting Colors with the new Membership Option!

The pro membership hides all ads, plus gives you double the colors in the color bucket, and more awesome pro features!

[Learn more, Memberships starting at \\$2.50/m!](#)

**Follow me
on Twitter!**

@ConvertingColor