

Converting Colors

XYZ(66.2921, 66.7764, 59.9652)

Have a look what the booklet for
XYZ(66.2921, 66.7764, 59.9652)
contains.

XYZ(66.3578, 66.9436, 59.8761)	3
<i>Conversions</i>	4
<i>Details</i>	6
<i>Harmonies</i>	12
<i>Previews</i>	24
<i>Color Blindness Simulation</i>	28
<i>CSS Examples</i>	31

Color

**XYZ(66.3578, 66.9436,
59.8761)**

Conversions

Conversions Part 1

Format	Color
Hex	EAD1C1
RGB	234, 209, 193
RGB Percent	92%, 82%, 76%
CMY	0.0824, 0.1804, 0.2431
CMYK	0.00, 0.11, 0.18, 0.08
HSL	23°, 49%, 84%
HSV	23°, 18%, 92%
XYZ	66.3578, 66.9436, 59.8761
YIQ	214.6510, 20.0360, 0.3240

Conversions

Conversions Part 2

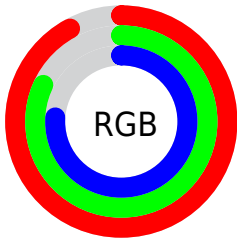
Format	Color
R_{YB}	234, 219, 193
Decimal	15389121
CIE _{Lab}	85.48, 6.17, 11.10
CIE _{LCh}	85, 12.700, 60.945
Yxy	66.9436, 0.3435, 0.3465
Android (android.graphics.Color)	4293579201 (0xFFEAD1C1)
YUV	214.6510, -10.6739, 16.9691
Hunter-Lab	81.8191, 1.5857, 13.8843

Details

The XYZ color **66.3578, 66.9436, 59.8761** is a light color, and the websafe version is hex **FFCCCC**. A complement of this color would be **61.9147, 67.4193, 87.5924**, and the grayscale version is **64.4172, 67.7719, 73.8036**.

A 20% lighter version of the original color is **94.0989, 99.6196, 103.8915**, and **34.7416, 34.7717, 29.3066** is the 20% darker color. If you saturate the color by 10%, you get **60.6068, 59.2935, 46.0834**, and if you desaturate by 10%, it is **72.8389, 75.3918, 75.9514**.

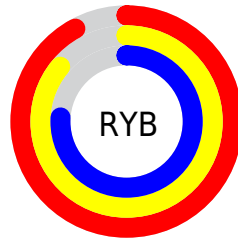
Distribution



Red (92%)

Green (82%)

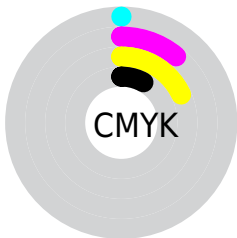
Blue (76%)



Red (92%)

Yellow (86%)

Blue (76%)

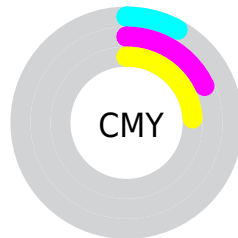


Cyan (0%)

Magenta (11%)

Yellow (18%)

Black (8%)



Cyan (8%)


Magenta (18%)


Yellow (24%)

Brightness & Saturation Gradients


These gradients show how the XYZ color 66.3578, 66.9436, 59.8761 changes by changing the brightness by 10 percent. The first figure shows a shift by +10% for each color and the second figure -10%.


Similar to the brightness gradients but the following saturation gradients show a change of the XYZ color 66.3578, 66.9436, 59.8761 by changing the saturation by 10% instead.


 66.3578, 66.9436,
59.8761

 66.3578, 66.9436,
59.8761

437.1239,
449.7440, 441.9329

 48.8317, 49.0388,
42.8941


 113.0546,
114.8396, 106.1915

 34.7000, 34.6503,
29.4713


142.9560,
145.5996, 136.3621

 23.5973, 23.3936,
19.1890


177.7132,
181.4134, 171.7659

 15.1583, 14.8844,
11.6287

217.6916,
222.6655, 212.8215

 9.0176, 8.7383,
6.3719

263.2565,
269.7401, 259.9475

 4.8099, 4.5709,
3.0001

314.7733,

 2.1697, 1.9978,

323.0219, 313.5623

1.0947

372.6073,
382.8950, 374.0846

■ 0.7267, 0.6062,
0.0000

■ 0.0000, 0.0000,
0.0000

■ 66.3578, 66.9436,
59.8761

■ 66.3578, 66.9436,
59.8761

■ 60.6068, 59.2935,
46.0834

■ 72.8389, 75.3918,
75.9514

■ 55.5530, 52.4084,
34.4643

■ 80.0707, 84.6521,
94.4031

■ 51.1688, 46.2658,
24.9071

■ 86.7306, 94.2098,
108.2209

■ 47.4222, 40.8389,
17.2885

■ 87.7419, 96.2325,
108.5580

■ 44.2786, 36.0986,
11.4717

■ 41.6994, 32.0140,
7.3018

■ 39.6403, 28.5505,
4.5970

■ 38.0450, 25.6679,
3.1158

■ 37.7023, 25.0334,
2.8448

Harmonies

Analogous

The Analogous color harmony consists of three colors that are next to each other on the color wheel.



68.5009, 66.9436, 65.0287



66.3578, 66.9436, 59.8761



63.5365, 66.9436, 58.1428

Triad

The Triadic color harmony groups three colors that are evenly spaced from another and form a triangle on the color wheel.



66.3578, 66.9436, 59.8761



58.2454, 66.9436, 73.1523



66.5207, 66.9436, 87.3696

Complementary

The Complementary color scheme is a pair of colors which are on the opposite of each other on the color wheel.



66.3578, 66.9436, 59.8761



61.9147, 67.4193, 87.5924

Split Complementary

Split-complementary colors differ from the complementary color scheme. The scheme consists of three colors, the original color and two neighbors of the complement color.



63.7193, 66.9436, 89.9415



66.3578, 66.9436, 59.8761



58.9916, 66.9436, 81.3611

Square

The Square scheme is like the rectangle color scheme, but the four colors are evenly spaced on the color wheel.



66.3578, 66.9436, 59.8761



58.9047, 66.9436, 65.4497



60.9739, 66.9436, 87.6653



68.5970, 66.9436, 80.8742

Rectangle

The Rectangle color scheme consists of four colors that form a rectangle on the color wheel.



66.3578, 66.9436, 59.8761



61.6671, 66.9436, 59.0477



60.9739, 66.9436, 87.6653



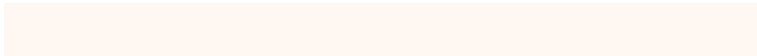
65.6298, 66.9436, 88.7428

Sweetspot

The Sweet Spot groups the original color and five complimentary colors.



66.3596, 66.9466, 59.8775



90.6348, 94.3463, 97.6351



65.6944, 60.7101, 74.7807



19.2708, 20.0282, 20.5718



0.0000, 0.0000, 0.0000



20.3446, 21.4041, 23.3091

Same Dimension

The Same Dimension uses a secret algorithm to generate beautiful new colors.



66.3596, 66.9466, 59.8775



78.0509, 77.9287, 66.4643



71.6373, 77.5020, 61.6367



15.5477, 16.0184, 15.7911



21.3003, 14.2948, 1.6365



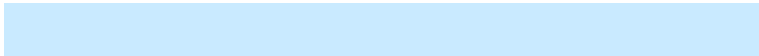
1.7637, 1.3047, 0.1589

Inverse Universe

The Inverse Universe completely reimagines the original color for something new.



61.9147, 67.4193, 87.5924



71.7089, 78.6007, 105.9997



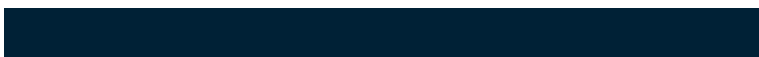
56.9891, 57.5681, 85.9506



14.9955, 16.0774, 19.2352



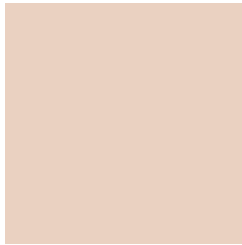
13.9623, 14.5716, 45.8197



1.1894, 1.3303, 3.6290

Previews

White Background



This preview shows how the XYZ color 66.3578, 66.9436, 59.8761 looks on a white background.

Color Contrast Check

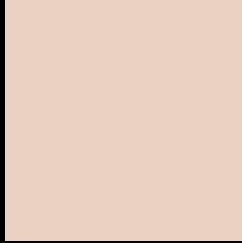
Large Text (above 18pt) WCAG AA × Fail

Any Text WCAG AA × Fail

Large Text (above 18pt) WCAG AAA × Fail

Any Text WCAG AAA × Fail

Black Background



This preview shows how the XYZ color 66.3578, 66.9436, 59.8761 looks on a black background.

Color Contrast Check

Large Text (above 18pt) WCAG AA ✓ Pass

Any Text WCAG AA ✓ Pass

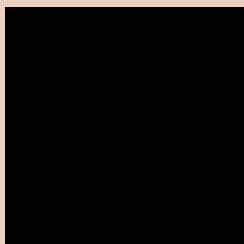
Large Text (above 18pt) WCAG AAA ✓ Pass

Any Text WCAG AAA ✓ Pass

If you want to check with other color combinations, try the [Color Contrast Checker](#).

XYZ 66.3578, 66.9436, 59.8761

Background



This preview shows how black text looks on a background with the XYZ color 66.3578, 66.9436, 59.8761.



This preview shows how white text looks on a background with the XYZ color 66.3578, 66.9436, 59.8761.

59.8761.

Color Blindness Simulation

Color vision deficiency is a very complex topic, and I could not describe the different causes any better than Wikipedia does, so if you want to learn more, you should check out their [article about color blindness](#).

Dichromacy



Original Color

66.3578, 66.9436, 59.8761

Protanopia

63.7688, 67.0582, 61.2123

Deuteranopia

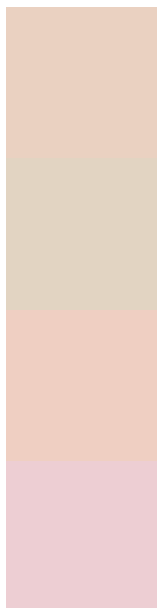
68.4269, 66.9149, 60.3483



Tritanopia

70.1424, 67.0602, 77.6536

Trichromacy



Original Color

66.3578, 66.9436, 59.8761

Protanomaly

64.6451, 67.1508, 60.5932

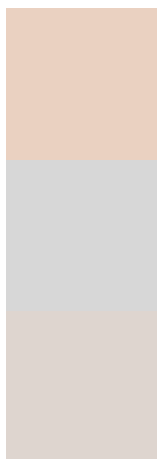
Deuteranomaly

67.6470, 66.8714, 60.3810

Tritanomaly

68.7542, 66.8503, 70.9077

Monochromacy



Original Color

66.3578, 66.9436, 59.8761

Achromatopsia

64.5905, 67.9542, 74.0022

Achromatomaly

65.1809, 67.6231, 68.6486

CSS Examples

Text

The CSS property to change the color of the text to XYZ 66.3578, 66.9436, 59.8761 is called "color". The color property can be set on classes, ids or directly on the HTML element.

This example shows how text in the color rgb(234, 209, 193) looks like.

```
.text, #text, p{  
    color:rgb(234, 209, 193)  
}
```

If you want to add a text shadow in that color use the text-shadow property, you can generate a text shadow directly with our [CSS Text Shadow Generator](#).

Here you see how black text with a 4 pixel rgb(234, 209, 193) colored shadow looks like.

```
.shadow{ text-shadow: 4px 4px 2px rgb(234, 209, 193) }
```

Border

The CSS property to change the border of an element to XYZ 66.3578, 66.9436, 59.8761 is called "border". The border property can be set on classes, ids or directly on the HTML element.

This example shows the color as border, it can be applied via the CSS property "border" or "border-color".

```
.border, #border, table{ border:4px solid rgb(234, 209, 193) }
```


If only the border color should be changed use the property `border-color`.

```
.border{ border-color:rgb(234, 209, 193) }
```

If you want to add a box shadow in that color use:

Here you see how a box with a 4 pixel `rgb(234, 209, 193)` colored shadow looks like.

```
.boxshadow{ -moz-box-shadow:4px 4px 4px  
4px rgb(234, 209, 193); -webkit-box-  
shadow:4px 4px 4px 4px rgb(234, 209, 193);  
box-shadow:4px 4px 4px 4px rgb(234, 209,  
193) }
```

Background

The CSS property to change the background color of an element to XYZ 66.3578, 66.9436, 59.8761 is called "background". The background property can be set on classes, ids or directly on the HTML element.

```
.background, #background, body{  
background: rgb(234, 209, 193) }
```

If only the background color should be changed can be used:

```
.background{ background-color: rgb(234,  
209, 193) }
```

This example shows the color as background, it is applied via the CSS property "background".

To optimize and compress your CSS code, you can use our [online CSS compressor and optimizer](#) based on csstidy. If you want to create a linear or radial gradient as background or border, check our [CSS Gradient Generator](#).

Hey! You found this booklet interesting? Support Converting Colors with the new Membership Option!

The pro membership hides all ads, plus gives you double the colors in the color bucket, and more awesome pro features!

[Learn more, Memberships starting at \\$2.50/m!](#)

**Follow me
on Twitter!**

@ConvertingColor