

Converting Colors

XYZ(66.3311, 66.0027, 68.9183)

Have a look what the booklet for
XYZ(66.3311, 66.0027, 68.9183)
contains.

XYZ(66.3311, 66.0027, 68.9183)	3
<i>Conversions</i>	4
<i>Details</i>	6
<i>Harmonies</i>	12
<i>Previews</i>	24
<i>Color Blindness Simulation</i>	28
<i>CSS Examples</i>	31

Color

**XYZ(66.3311, 66.0027,
68.9183)**

Conversions

Conversions Part 1

Format	Color
Hex	E6CFD0
RGB	230, 207, 208
RGB Percent	90%, 81%, 82%
CMY	0.0980, 0.1882, 0.1843
CMYK	0.00, 0.10, 0.10, 0.10
HSL	357°, 32%, 86%
HSV	357°, 10%, 90%
XYZ	66.3311, 66.0027, 68.9183
YIQ	213.9910, 13.3870, 5.1870

Conversions

Conversions Part 2

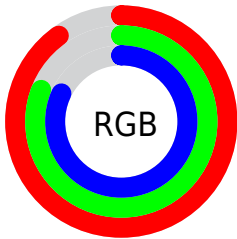
Format	Color
R _Y B	230, 207, 208
Decimal	15126480
CIE Lab	85.00, 8.17, 2.41
CIE LCh	85, 8.517, 16.465
Yxy	66.0027, 0.3296, 0.3280
Android (android.graphics.Color)	4293316560 (0xFFE6CFD0)
YUV	213.9910, -2.9536, 14.0399
Hunter-Lab	81.2420, 3.5650, 6.5732

Details

The XYZ color **66.3311, 66.0027, 68.9183** is a light color, and the websafe version is hex **CCCCCC**. A complement of this color would be **68.1743, 75.5178, 85.1156**, and the grayscale version is **63.9249, 67.2540, 73.2396**.

A 20% lighter version of the original color is **95.0500, 100.0000, 108.9000**, and **34.6795, 34.1142, 35.3287** is the 20% darker color. If you saturate the color by 10%, you get **58.6377, 54.6515, 53.9113**, and if you desaturate by 10%, it is **75.2155, 79.1334, 86.1769**.

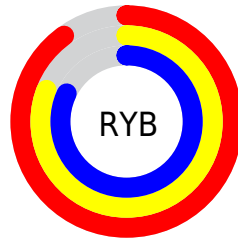
Distribution



Red (90%)

Green (81%)

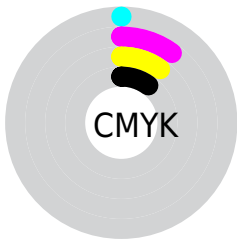
Blue (82%)



Red (90%)

Yellow (81%)

Blue (82%)

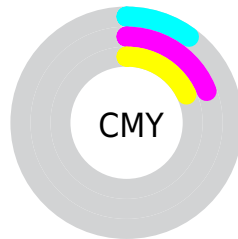


Cyan (0%)

Magenta (10%)

Yellow (10%)

Black (10%)



Cyan (10%)

Magenta (19%)

Yellow (18%)

Brightness & Saturation Gradients

These gradients show how the XYZ color 66.3311, 66.0027, 68.9183 changes by changing the brightness by 10 percent. The first figure shows a shift by +10% for each color and the second figure -10%.

Similar to the brightness gradients but the following saturation gradients show a change of the XYZ color 66.3311, 66.0027, 68.9183 by changing the saturation by 10% instead.

66.3311, 66.0027,
68.9183

66.3311, 66.0027,
68.9183

437.0301,
446.3865, 475.4289

48.8099, 48.2746,
50.1738

113.0165,
113.4902, 119.3315

34.6826, 34.0444,
35.1794

142.9115,
144.0184, 151.8373

23.5839, 22.9277,
23.5164

177.6617,
179.5821, 189.7673

15.1483, 14.5401,
14.7664

217.6327,
220.5656, 233.5400

9.0105, 8.4973,
8.5108

263.1896,
267.3535, 283.5739

4.8052, 4.4148,
4.3311

314.6979,

2.1670, 1.9082,

320.3300, 340.2877

1.8087

372.5229,
379.8795, 404.0999

■ 0.7253, 0.5533,
0.4337

■ 0.0000, 0.0000,
0.0000

■ 66.3311, 66.0027,
68.9183

■ 66.3311, 66.0027,
68.9183

■ 58.6377, 54.6515,
53.9113

■ 75.2155, 79.1334,
86.1769

■ 52.0795, 44.9949,
41.0590

■ 85.3327, 94.1062,
105.7700

■ 46.6044, 36.9543,
30.2637

■ 86.4434, 95.5632,
108.4972

■ 42.1541, 30.4415,
21.4188

■ 38.6648, 25.3598,
14.4079

■ 36.0656, 21.6015,
9.1021

■ 34.2759, 19.0436,
5.3561

■ 33.2002, 17.5403,
3.0001

■ 32.6881, 16.8451,
1.8148

Harmonies

Analogous

The Analogous color harmony consists of three colors that are next to each other on the color wheel.



66.3817, 66.0027, 74.3619



66.3311, 66.0027, 68.9183



65.3039, 66.0027, 64.4892

Triad

The Triadic color harmony groups three colors that are evenly spaced from another and form a triangle on the color wheel.



66.3311, 66.0027, 68.9183



60.1021, 66.0027, 64.8446



61.8758, 66.0027, 82.6126

Complementary

The Complementary color scheme is a pair of colors which are on the opposite of each other on the color wheel.



66.3311, 66.0027, 68.9183



68.1743, 75.5178, 85.1156

Split Complementary

Split-complementary colors differ from the complementary color scheme. The scheme consists of three colors, the original color and two neighbors of the complement color.



60.2316, 66.0027, 79.7843



66.3311, 66.0027, 68.9183



59.2217, 66.0027, 69.4261

Square

The Square scheme is like the rectangle color scheme, but the four colors are evenly spaced on the color wheel.



66.3311, 66.0027, 68.9183



61.6958, 66.0027, 62.2205



59.2686, 66.0027, 74.8960



63.7829, 66.0027, 82.4595

Rectangle

The Rectangle color scheme consists of four colors that form a rectangle on the color wheel.



66.3311, 66.0027, 68.9183



64.2153, 66.0027, 62.6253



59.2686, 66.0027, 74.8960



61.2749, 66.0027, 81.9731

Sweetspot

The Sweet Spot groups the original color and five complimentary colors.



66.3329, 66.0056, 68.9197



91.5018, 94.7533, 102.0145



68.8629, 66.9751, 84.1616



19.3873, 19.9886, 21.4511



0.0000, 0.0000, 0.0000



20.3446, 21.4041, 23.3091

Same Dimension

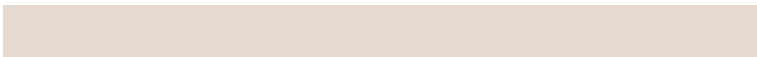
The Same Dimension uses a secret algorithm to generate beautiful new colors.



66.3329, 66.0056, 68.9197



81.6931, 80.2625, 82.9406



68.8007, 71.1365, 69.1396



14.4022, 14.3781, 15.0522



18.5174, 9.5412, 1.0877



1.3773, 0.7086, 0.1276

Inverse Universe

The Inverse Universe completely reimagines the original color for something new.



66.3329, 66.0056, 68.9197



81.6931, 80.2625, 82.9406



65.5190, 69.9839, 84.9186



14.4022, 14.3781, 15.0522



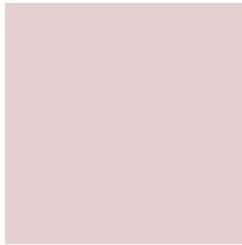
18.5174, 9.5412, 1.0877



1.3773, 0.7086, 0.1276

Previews

White Background



This preview shows how the XYZ color 66.3311, 66.0027, 68.9183 looks on a white background.

Color Contrast Check

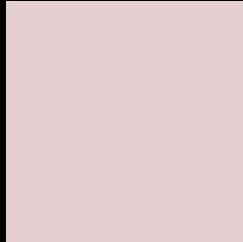
Large Text (above 18pt) WCAG AA × Fail

Any Text WCAG AA × Fail

Large Text (above 18pt) WCAG AAA × Fail

Any Text WCAG AAA × Fail

Black Background



This preview shows how the XYZ color 66.3311, 66.0027, 68.9183 looks on a black background.

Color Contrast Check

Large Text (above 18pt) WCAG AA ✓ Pass

Any Text WCAG AA ✓ Pass

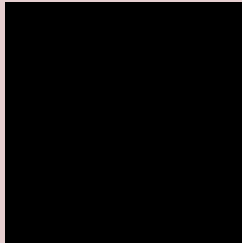
Large Text (above 18pt) WCAG AAA ✓ Pass

Any Text WCAG AAA ✓ Pass

If you want to check with other color combinations, try the [Color Contrast Checker](#).

XYZ 66.3311, 66.0027, 68.9183

Background



This preview shows how black text looks on a background with the XYZ color 66.3311, 66.0027, 68.9183.



This preview shows how white text looks on a background with the XYZ color 66.3311, 66.0027,

Color Blindness Simulation

Color vision deficiency is a very complex topic, and I could not describe the different causes any better than Wikipedia does, so if you want to learn more, you should check out their [article about color blindness](#).

Dichromacy



Original Color

66.3311, 66.0027, 68.9183

Protanopia

63.2460, 65.8406, 70.3479

Deuteranopia

67.1482, 65.7091, 68.8185



Tritanopia

68.1612, 66.0389, 77.5609

Trichromacy



Original Color

66.3311, 66.0027, 68.9183

Protanomaly

64.3740, 66.0688, 69.6813

Deuteranomaly

67.0607, 66.0203, 68.8832

Tritanomaly

67.4210, 66.0894, 74.1688

Monochromacy



Original Color

66.3311, 66.0027, 68.9183

Achromatopsia

63.9157, 67.2443, 73.2291

Achromatomaly

64.6931, 66.5576, 71.7246

CSS Examples

Text

The CSS property to change the color of the text to XYZ 66.3311, 66.0027, 68.9183 is called "color". The color property can be set on classes, ids or directly on the HTML element.

This example shows how text in the color `rgb(230, 207, 208)` looks like.

```
.text, #text, p{  
    color:rgb(230, 207, 208)  
}
```

If you want to add a text shadow in that color use the text-shadow property, you can generate a text shadow directly with our [CSS Text Shadow Generator](#).

Here you see how black text with a 4 pixel rgb(230, 207, 208) colored shadow looks like.

```
.shadow{ text-shadow: 4px 4px 2px rgb(230, 207, 208) }
```

Border

The CSS property to change the border of an element to XYZ 66.3311, 66.0027, 68.9183 is called "border". The border property can be set on classes, ids or directly on the HTML element.

This example shows the color as border, it can be applied via the CSS property "border" or "border-color".

```
.border, #border, table{ border:4px solid rgb(230, 207, 208) }
```


If only the border color should be changed use the property `border-color`.

```
.border{ border-color:rgb(230, 207, 208) }
```

If you want to add a box shadow in that color use:

Here you see how a box with a 4 pixel `rgb(230, 207, 208)` colored shadow looks like.

```
.boxshadow{ -moz-box-shadow:4px 4px 4px  
4px rgb(230, 207, 208); -webkit-box-  
shadow:4px 4px 4px 4px rgb(230, 207, 208);  
box-shadow:4px 4px 4px 4px rgb(230, 207,  
208) }
```

Background

The CSS property to change the background color of an element to XYZ 66.3311, 66.0027, 68.9183 is called "background". The background property can be set on classes, ids or directly on the HTML element.

```
.background, #background, body{  
background: rgb(230, 207, 208) }
```

If only the background color should be changed can be used:

```
.background{ background-color: rgb(230,  
207, 208) }
```

This example shows the color as background, it is applied via the CSS property "background".

To optimize and compress your CSS code, you can use our [online CSS compressor and optimizer](#) based on csstidy. If you want to create a linear or radial gradient as background or border, check our [CSS Gradient Generator](#).

Hey! You found this booklet interesting? Support Converting Colors with the new Membership Option!

The pro membership hides all ads, plus gives you double the colors in the color bucket, and more awesome pro features!

[Learn more, Memberships starting at \\$2.50/m!](#)

**Follow me
on Twitter!**

@ConvertingColor