

Converting Colors

XYZ(66.3370, 66.6011, 72.8322)

Have a look what the booklet for
XYZ(66.3370, 66.6011, 72.8322)
contains.

XYZ(66.3021, 66.6247, 72.9837)	3
<i>Conversions</i>	4
<i>Details</i>	6
<i>Harmonies</i>	12
<i>Previews</i>	24
<i>Color Blindness Simulation</i>	28
<i>CSS Examples</i>	31

Color

**XYZ(66.3021, 66.6247,
72.9837)**

Conversions

Conversions Part 1

Format	Color
Hex	E2D1D6
RGB	226, 209, 214
RGB Percent	89%, 82%, 84%
CMY	0.1137, 0.1804, 0.1608
CMYK	0.00, 0.08, 0.05, 0.11
HSL	342°, 23%, 85%
HSV	342°, 8%, 89%
XYZ	66.3021, 66.6247, 72.9837
YIQ	214.6530, 8.5270, 5.1590

Conversions

Conversions Part 2

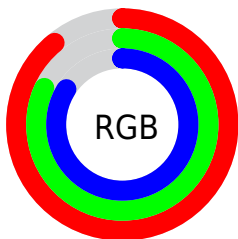
Format	Color
R _Y B	226, 209, 214
Decimal	14864854
CIE Lab	85.31, 6.74, -0.35
CIE LCh	85, 6.749, 357.001
Yxy	66.6247, 0.3220, 0.3236
Android (android.graphics.Color)	4293054934 (0xFFE2D1D6)
YUV	214.6530, -0.3219, 9.9513
Hunter-Lab	81.6240, 2.1514, 4.1229

Details

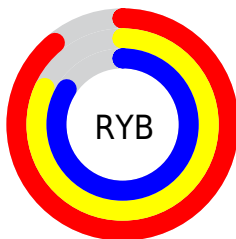
The XYZ color **66.3021, 66.6247, 72.9837** is a light color, and the websafe version is hex **CCCCCC**. A complement of this color would be **66.5445, 73.1702, 79.0262**, and the grayscale version is **64.3564, 67.7079, 73.7339**.

A 20% lighter version of the original color is **95.0500, 100.0000, 108.9000**, and **34.7739, 34.6038, 37.6473** is the 20% darker color. If you saturate the color by 10%, you get **59.2070, 55.5370, 61.0524**, and if you desaturate by 10%, it is **74.3871, 79.3711, 86.2315**.

Distribution



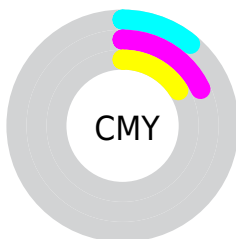
- Red (89%)
- Green (82%)
- Blue (84%)



- Red (89%)
- Yellow (82%)
- Blue (84%)



- Cyan (0%)
- Magenta (8%)
- Yellow (5%)
- Black (11%)



- Cyan (11%)
- Magenta (18%)
- Yellow (16%)

Brightness & Saturation Gradients

These gradients show how the XYZ color 66.3021, 66.6247, 72.9837 changes by changing the brightness by 10 percent. The first figure shows a shift by +10% for each color and the second figure -10%.

Similar to the brightness gradients but the following saturation gradients show a change of the XYZ color 66.3021, 66.6247, 72.9837 by changing the saturation by 10% instead.

66.3021, 66.6247,
72.9837

66.3021, 66.6247,
72.9837

436.9281,
448.6077, 490.0276

48.7863, 48.7797,
53.4709

112.9751,
114.3825, 125.1748

34.6638, 34.4448,
37.7885

142.8631,
145.0640, 158.6901

23.5693, 23.2355,
25.5180

177.6058,
180.7932, 197.7101

15.1375, 14.7675,
16.2409

217.5686,
221.9545, 242.6531

9.0029, 8.6564,
9.5386

263.1169,
268.9322, 293.9379

4.8002, 4.5177,
4.9925

314.6160,

2.1640, 1.9672,

322.1107, 351.9828

2.1842

372.4313,
381.8744, 417.2066

■ 0.7237, 0.5883,
0.6652

■ 0.0000, 0.0000,
0.0000

■ 66.3021, 66.6247,
72.9837

■ 66.3021, 66.6247,
72.9837

■ 59.2070, 55.5370,
61.0524

■ 74.3871, 79.3711,
86.2315

■ 53.0577, 46.0312,
50.3923

■ 83.4930, 93.8317,
100.8308

■ 47.8146, 38.0372,
40.9616

■ 85.1744, 94.9090,
108.4378

■ 43.4335, 31.4764,
32.7146

■ 39.8661, 26.2629,
25.6024

■ 37.0593, 22.3016,
19.5727

■ 34.9532, 19.4849,
14.5687

■ 33.4784, 17.6867,
10.5274

■ 32.5432, 16.7378,
7.3750

Harmonies

Analogous

The Analogous color harmony consists of three colors that are next to each other on the color wheel.



65.8191, 66.6247, 77.2192



66.3021, 66.6247, 72.9837



65.9768, 66.6247, 68.7922

Triad

The Triadic color harmony groups three colors that are evenly spaced from another and form a triangle on the color wheel.



66.3021, 66.6247, 72.9837



62.0012, 66.6247, 65.3063



61.7393, 66.6247, 79.8257

Complementary

The Complementary color scheme is a pair of colors which are on the opposite of each other on the color wheel.



66.3021, 66.6247, 72.9837



66.5445, 73.1702, 79.0262

Split Complementary

Split-complementary colors differ from the complementary color scheme. The scheme consists of three colors, the original color and two neighbors of the complement color.



60.7448, 66.6247, 76.4277



66.3021, 66.6247, 72.9837



60.8943, 66.6247, 68.0594

Square

The Square scheme is like the rectangle color scheme, but the four colors are evenly spaced on the color wheel.



66.3021, 66.6247, 72.9837



63.4785, 66.6247, 64.4662



60.4380, 66.6247, 72.1040



63.1713, 66.6247, 81.2677

Rectangle

The Rectangle color scheme consists of four colors that form a rectangle on the color wheel.



66.3021, 66.6247, 72.9837



65.3482, 66.6247, 66.5657



60.4380, 66.6247, 72.1040



61.3436, 66.6247, 78.8678

Sweetspot

The Sweet Spot groups the original color and five complimentary colors.



66.3040, 66.6276, 72.9851



92.8701, 96.5593, 105.3401



66.3185, 66.4514, 81.2835



19.9009, 20.7037, 22.5845



0.0000, 0.0000, 0.0000



20.3446, 21.4041, 23.3091

Same Dimension

The Same Dimension uses a secret algorithm to generate beautiful new colors.



66.3040, 66.6276, 72.9851



85.6606, 85.2213, 93.4383



66.5184, 68.0621, 69.9565



13.8722, 13.7665, 15.0970



18.5068, 9.4697, 4.0686



1.3212, 0.6717, 0.4842

Inverse Universe

The Inverse Universe completely reimagines the original color for something new.



66.3040, 66.6276, 72.9851



85.6606, 85.2213, 93.4383



66.3051, 71.6101, 82.2799



13.8722, 13.7665, 15.0970



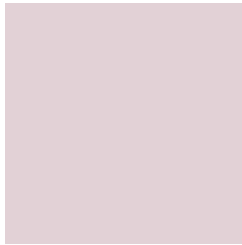
18.5068, 9.4697, 4.0686



1.3212, 0.6717, 0.4842

Previews

White Background



This preview shows how the XYZ color 66.3021, 66.6247, 72.9837 looks on a white background.

Color Contrast Check

Large Text (above 18pt) WCAG AA × Fail

Any Text WCAG AA × Fail

Large Text (above 18pt) WCAG AAA × Fail

Any Text WCAG AAA × Fail

Black Background



This preview shows how the XYZ color 66.3021, 66.6247, 72.9837 looks on a black background.

Color Contrast Check

Large Text (above 18pt) WCAG AA ✓ Pass

Any Text WCAG AA ✓ Pass

Large Text (above 18pt) WCAG AAA ✓ Pass

Any Text WCAG AAA ✓ Pass

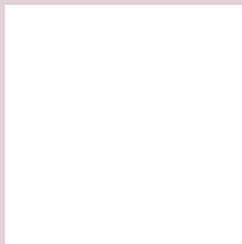
If you want to check with other color combinations, try the [Color Contrast Checker](#).

XYZ 66.3021, 66.6247, 72.9837

Background



This preview shows how black text looks on a background with the XYZ color 66.3021, 66.6247, 72.9837.



This preview shows how white text looks on a background with the XYZ color 66.3021, 66.6247,

Color Blindness Simulation

Color vision deficiency is a very complex topic, and I could not describe the different causes any better than Wikipedia does, so if you want to learn more, you should check out their [article about color blindness](#).

Dichromacy



Original Color

66.3021, 66.6247, 72.9837

Protanopia

64.2571, 66.6438, 74.4426

Deuteranopia

67.8132, 66.3213, 72.8455



Tritanopia

67.4459, 66.3384, 79.7708

Trichromacy



Original Color

66.3021, 66.6247, 72.9837

Protanomaly

65.0752, 66.7105, 73.7366

Deuteranomaly

67.0835, 66.3037, 72.8805

Tritanomaly

67.1527, 66.6100, 77.0278

Monochromacy



Original Color

66.3021, 66.6247, 72.9837

Achromatopsia

64.5905, 67.9542, 74.0022

Achromatomaly

65.2734, 67.5549, 73.8891

CSS Examples

Text

The CSS property to change the color of the text to XYZ 66.3021, 66.6247, 72.9837 is called "color". The color property can be set on classes, ids or directly on the HTML element.

This example shows how text in the color rgb(226, 209, 214) looks like.

```
.text, #text, p{  
    color:rgb(226, 209, 214)  
}
```

If you want to add a text shadow in that color use the text-shadow property, you can generate a text shadow directly with our [CSS Text Shadow Generator](#).

Here you see how black text with a 4 pixel rgb(226, 209, 214) colored shadow looks like.

```
.shadow{ text-shadow: 4px 4px 2px rgb(226, 209, 214) }
```

Border

The CSS property to change the border of an element to XYZ 66.3021, 66.6247, 72.9837 is called "border". The border property can be set on classes, ids or directly on the HTML element.

This example shows the color as border, it can be applied via the CSS property "border" or "border-color".

```
.border, #border, table{ border:4px solid rgb(226, 209, 214) }
```


If only the border color should be changed use the property border-color.

```
.border{ border-color:rgb(226, 209, 214) }
```

If you want to add a box shadow in that color use:

Here you see how a box with a 4 pixel rgb(226, 209, 214) colored shadow looks like.

```
.boxshadow{ -moz-box-shadow:4px 4px 4px  
4px rgb(226, 209, 214); -webkit-box-  
shadow:4px 4px 4px 4px rgb(226, 209, 214);  
box-shadow:4px 4px 4px 4px rgb(226, 209,  
214) }
```

Background

The CSS property to change the background color of an element to XYZ 66.3021, 66.6247, 72.9837 is called "background". The background property can be set on classes, ids or directly on the HTML element.

```
.background, #background, body{  
background: rgb(226, 209, 214) }
```

If only the background color should be changed can be used:

```
.background{ background-color: rgb(226,  
209, 214) }
```

This example shows the color as background, it is applied via the CSS property "background".

To optimize and compress your CSS code, you can use our [online CSS compressor and optimizer](#) based on csstidy. If you want to create a linear or radial gradient as background or border, check our [CSS Gradient Generator](#).

Hey! You found this booklet interesting? Support Converting Colors with the new Membership Option!

The pro membership hides all ads, plus gives you double the colors in the color bucket, and more awesome pro features!

[Learn more, Memberships starting at \\$2.50/m!](#)

**Follow me
on Twitter!**

@ConvertingColor