

Converting Colors

XYZ(66.3584, 65.8433, 70.3679)

Have a look what the booklet for
XYZ(66.3584, 65.8433, 70.3679)
contains.

XYZ(66.5788, 66.1018, 70.2226)	3
<i>Conversions</i>	4
<i>Details</i>	6
<i>Harmonies</i>	12
<i>Previews</i>	24
<i>Color Blindness Simulation</i>	28
<i>CSS Examples</i>	31

Color

**XYZ(66.5788, 66.1018,
70.2226)**

Conversions

Conversions Part 1

Format	Color
Hex	E6CFD2
RGB	230, 207, 210
RGB Percent	90%, 81%, 82%
CMY	0.0980, 0.1882, 0.1765
CMYK	0.00, 0.10, 0.09, 0.10
HSL	352°, 32%, 86%
HSV	352°, 10%, 90%
XYZ	66.5788, 66.1018, 70.2226
YIQ	214.2190, 12.7450, 5.8090

Conversions

Conversions Part 2

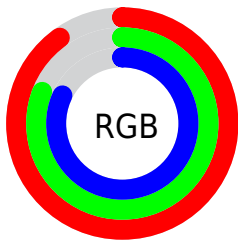
Format	Color
R_{YB}	230, 207, 210
Decimal	15126482
CIE Lab	85.05, 8.50, 1.42
CIE LCh	85, 8.619, 9.512
Yxy	66.1018, 0.3281, 0.3258
Android (android.graphics.Color)	4293316562 (0xFFE6CFD2)
YUV	214.2190, -2.0800, 13.8399
Hunter-Lab	81.3030, 3.8929, 5.7025

Details

The XYZ color **66.5788, 66.1018, 70.2226** is a light color, and the websafe version is hex **CCCCCC**. A complement of this color would be **67.8966, 75.4067, 83.6532**, and the grayscale version is **64.0731, 67.4099, 73.4093**.

A 20% lighter version of the original color is **95.0500, 100.0000, 108.9000**, and **34.8475, 34.1814, 36.2135** is the 20% darker color. If you saturate the color by 10%, you get **59.0691, 54.8240, 56.1828**, and if you desaturate by 10%, it is **75.2155, 79.1334, 86.1766**.

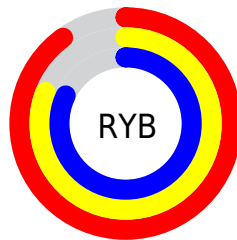
Distribution



Red (90%)

Green (81%)

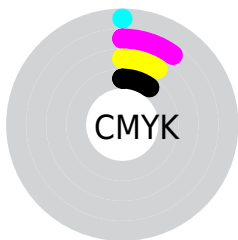
Blue (82%)



Red (90%)

Yellow (81%)

Blue (82%)

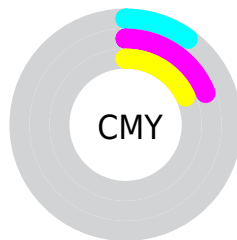


Cyan (0%)

Magenta (10%)

Yellow (9%)

Black (10%)



Cyan (10%)

Magenta (19%)

Yellow (18%)

Brightness & Saturation Gradients

These gradients show how the XYZ color 66.5788, 66.1018, 70.2226 changes by changing the brightness by 10 percent. The first figure shows a shift by +10% for each color and the second figure -10%.

Similar to the brightness gradients but the following saturation gradients show a change of the XYZ color 66.5788, 66.1018, 70.2226 by changing the saturation by 10% instead.

66.5788, 66.1018,
70.2226

66.5788, 66.1018,
70.2226

437.9001,
446.7409, 480.1414

49.0118, 48.3550,
51.2301

113.3698,
113.6324, 121.2102

34.8435, 34.1081,
36.0138

143.3246,
144.1851, 154.0425

23.7083, 22.9767,
24.1551

178.1393,
179.7752, 192.3250

15.2409, 14.5763,
15.2354

218.1794,
220.7871, 236.4764

9.0761, 8.5226,
8.8363

263.8101,
267.6052, 286.9152

4.8483, 4.4311,
4.5392

315.3969,

2.1924, 1.9175,

320.6140, 344.0599

1.9256

373.3051,
380.1977, 408.3292

■ 0.7387, 0.5589,
0.5089

■ 0.0000, 0.0000,
0.0000

■ 66.5788, 66.1018,
70.2226

■ 66.5788, 66.1018,
70.2226

■ 59.0691, 54.8240,
56.1828

■ 75.2155, 79.1334,
86.1766

■ 52.6344, 45.2168,
43.9809

■ 85.0172, 93.9800,
104.1087

■ 47.2269, 37.2033,
33.5420

■ 86.4435, 95.5632,
108.4972

■ 42.7932, 30.6972,
24.7842

■ 39.2746, 25.6038,
17.6191

■ 36.6065, 21.8179,
11.9502

■ 34.7154, 19.2194,
7.6704

■ 33.5151, 17.6662,
4.6580

■ 32.8675, 16.9168,
2.7592

Harmonies

Analogous

The Analogous color harmony consists of three colors that are next to each other on the color wheel.



66.3871, 66.1018, 75.7777



66.5788, 66.1018, 70.2226



65.7496, 66.1018, 65.3886

Triad

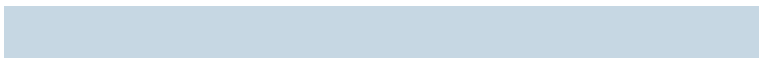
The Triadic color harmony groups three colors that are evenly spaced from another and form a triangle on the color wheel.



66.5788, 66.1018, 70.2226



60.4843, 66.1018, 64.0427



61.5313, 66.1018, 82.4514

Complementary

The Complementary color scheme is a pair of colors which are on the opposite of each other on the color wheel.



66.5788, 66.1018, 70.2226



67.8966, 75.4067, 83.6532

Split Complementary

Split-complementary colors differ from the complementary color scheme. The scheme consists of three colors, the original color and two neighbors of the complement color.



59.9938, 66.1018, 78.9866



66.5788, 66.1018, 70.2226



59.3980, 66.1018, 68.2991

Square

The Square scheme is like the rectangle color scheme, but the four colors are evenly spaced on the color wheel.



66.5788, 66.1018, 70.2226



62.2134, 66.1018, 61.9437



59.2204, 66.1018, 73.7535



63.4462, 66.1018, 83.0317

Rectangle

The Rectangle color scheme consists of four colors that form a rectangle on the color wheel.



66.5788, 66.1018, 70.2226



64.7393, 66.1018, 63.1549



59.2204, 66.1018, 73.7535



60.9543, 66.1018, 81.5773

Sweetspot

The Sweet Spot groups the original color and five complimentary colors.



66.5807, 66.1047, 70.2240



91.6050, 94.7947, 102.5583



68.2553, 66.6619, 84.1332



19.4150, 19.9997, 21.5971



0.0000, 0.0000, 0.0000



20.3446, 21.4041, 23.3091

Same Dimension

The Same Dimension uses a secret algorithm to generate beautiful new colors.



66.5807, 66.1047, 70.2240



82.0606, 80.4095, 84.8760



68.3085, 70.1523, 68.9755



14.4530, 14.3984, 15.3201



18.6323, 9.5871, 1.6926



1.4016, 0.7184, 0.2556

Inverse Universe

The Inverse Universe completely reimagines the original color for something new.



66.5807, 66.1047, 70.2240



82.0606, 80.4095, 84.8760



66.0238, 70.9935, 85.0869



14.4530, 14.3984, 15.3201



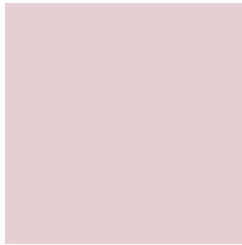
18.6323, 9.5871, 1.6926



1.4016, 0.7184, 0.2556

Previews

White Background



This preview shows how the XYZ color 66.5788, 66.1018, 70.2226 looks on a white background.

Color Contrast Check

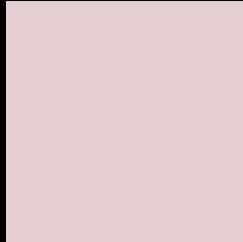
Large Text (above 18pt) WCAG AA × Fail

Any Text WCAG AA × Fail

Large Text (above 18pt) WCAG AAA × Fail

Any Text WCAG AAA × Fail

Black Background



This preview shows how the XYZ color 66.5788, 66.1018, 70.2226 looks on a black background.

Color Contrast Check

Large Text (above 18pt) WCAG AA ✓ Pass

Any Text WCAG AA ✓ Pass

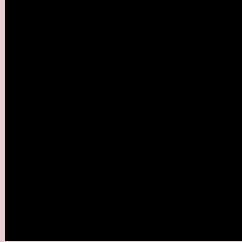
Large Text (above 18pt) WCAG AAA ✓ Pass

Any Text WCAG AAA ✓ Pass

If you want to check with other color combinations, try the [Color Contrast Checker](#).

XYZ 66.5788, 66.1018, 70.2226

Background



This preview shows how black text looks on a background with the XYZ color 66.5788, 66.1018, 70.2226.



This preview shows how white text looks on a background with the XYZ color 66.5788, 66.1018,

70.2226.

Color Blindness Simulation

Color vision deficiency is a very complex topic, and I could not describe the different causes any better than Wikipedia does, so if you want to learn more, you should check out their [article about color blindness](#).

Dichromacy



Original Color

66.5788, 66.1018, 70.2226

Protanopia

63.6234, 65.9916, 72.3351

Deuteranopia

67.6358, 66.2882, 70.2029



Tritanopia

68.1612, 66.0389, 77.5609

Trichromacy



Original Color

66.5788, 66.1018, 70.2226

Protanomaly

64.7491, 66.2188, 71.6562

Deuteranomaly

67.3084, 66.1194, 70.1875

Tritanomaly

67.5507, 66.1413, 74.8519

Monochromacy



Original Color

66.5788, 66.1018, 70.2226

Achromatopsia

63.9157, 67.2443, 73.2291

Achromatomaly

64.8197, 66.6083, 72.3911

CSS Examples

Text

The CSS property to change the color of the text to XYZ 66.5788, 66.1018, 70.2226 is called "color". The color property can be set on classes, ids or directly on the HTML element.

This example shows how text in the color `rgb(230, 207, 210)` looks like.

```
.text, #text, p{  
    color:rgb(230, 207, 210)  
}
```

If you want to add a text shadow in that color use the text-shadow property, you can generate a text shadow directly with our [CSS Text Shadow Generator](#).

Here you see how black text with a 4 pixel rgb(230, 207, 210) colored shadow looks like.

```
.shadow{ text-shadow: 4px 4px 2px rgb(230, 207, 210) }
```

Border

The CSS property to change the border of an element to XYZ 66.5788, 66.1018, 70.2226 is called "border". The border property can be set on classes, ids or directly on the HTML element.

This example shows the color as border, it can be applied via the CSS property "border" or "border-color".

```
.border, #border, table{ border:4px solid rgb(230, 207, 210) }
```


If only the border color should be changed use the property `border-color`.

```
.border{ border-color:rgb(230, 207, 210) }
```

If you want to add a box shadow in that color use:

Here you see how a box with a 4 pixel `rgb(230, 207, 210)` colored shadow looks like.

```
.boxshadow{ -moz-box-shadow:4px 4px 4px  
4px rgb(230, 207, 210); -webkit-box-  
shadow:4px 4px 4px 4px rgb(230, 207, 210);  
box-shadow:4px 4px 4px 4px rgb(230, 207,  
210) }
```

Background

The CSS property to change the background color of an element to XYZ 66.5788, 66.1018, 70.2226 is called "background". The background property can be set on classes, ids or directly on the HTML element.

```
.background, #background, body{  
background: rgb(230, 207, 210) }
```

If only the background color should be changed can be used:

```
.background{ background-color: rgb(230,  
207, 210) }
```

This example shows the color as background, it is applied via the CSS property "background".

To optimize and compress your CSS code, you can use our [online CSS compressor and optimizer](#) based on csstidy. If you want to create a linear or radial gradient as background or border, check our [CSS Gradient Generator](#).

Hey! You found this booklet interesting? Support Converting Colors with the new Membership Option!

The pro membership hides all ads, plus gives you double the colors in the color bucket, and more awesome pro features!

[Learn more, Memberships starting at \\$2.50/m!](#)

**Follow me
on Twitter!**

@ConvertingColor