

Converting Colors

XYZ(66.4395, 64.9346, 71.3291)

Have a look what the booklet for
XYZ(66.4395, 64.9346, 71.3291)
contains.

XYZ(66.4315, 64.9281, 71.3184)	3
<i>Conversions</i>	4
<i>Details</i>	6
<i>Harmonies</i>	12
<i>Previews</i>	24
<i>Color Blindness Simulation</i>	28
<i>CSS Examples</i>	31

Color

**XYZ(66.4315, 64.9281,
71.3184)**

Conversions

Conversions Part 1

Format	Color
Hex	E7CCD4
RGB	231, 204, 212
RGB Percent	91%, 80%, 83%
CMY	0.0941, 0.2000, 0.1686
CMYK	0.00, 0.12, 0.08, 0.09
HSL	342°, 36%, 85%
HSV	342°, 12%, 91%
XYZ	66.4315, 64.9281, 71.3184
YIQ	212.9850, 13.5240, 8.2120

Conversions

Conversions Part 2

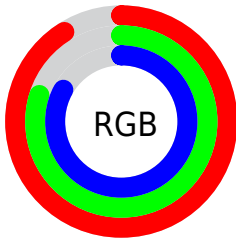
Format	Color
R _Y B	231, 204, 212
Decimal	15191252
CIE Lab	84.45, 10.77, -0.51
CIE LCh	84, 10.778, 357.304
Yxy	64.9281, 0.3278, 0.3204
Android (android.graphics.Color)	4293381332 (0xFFE7CCD4)
YUV	212.9850, -0.4856, 15.7992
Hunter-Lab	80.5780, 6.1506, 3.9279

Details

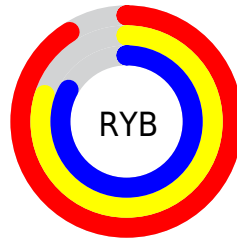
The XYZ color **66.4315, 64.9281, 71.3184** is a light color, and the websafe version is hex **FFCCCC**. A complement of this color would be **66.7995, 75.3185, 80.8329**, and the grayscale version is **63.2342, 66.5273, 72.4482**.

A 20% lighter version of the original color is **95.0500, 100.0000, 108.9000**, and **34.6713, 33.3610, 36.5102** is the 20% darker color. If you saturate the color by 10%, you get **59.3946, 53.9722, 59.3588**, and if you desaturate by 10%, it is **74.4929, 77.6009, 84.6400**.

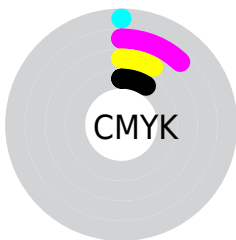
Distribution



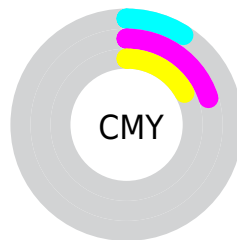
- Red (91%)
- Green (80%)
- Blue (83%)



- Red (91%)
- Yellow (80%)
- Blue (83%)



- Cyan (0%)
- Magenta (12%)
- Yellow (8%)
- Black (9%)



- Cyan (9%)
- Magenta (20%)
- Yellow (17%)

Brightness & Saturation Gradients

These gradients show how the XYZ color 66.4315, 64.9281, 71.3184 changes by changing the brightness by 10 percent. The first figure shows a shift by +10% for each color and the second figure -10%.

Similar to the brightness gradients but the following saturation gradients show a change of the XYZ color 66.4315, 64.9281, 71.3184 by changing the saturation by 10% instead.

66.4315, 64.9281,
71.3184

66.4315, 64.9281,
71.3184

437.3828,
442.5335, 484.0793

48.8918, 47.4028,
52.1186

113.1597,
111.9465, 122.7857

34.7478, 33.3542,
36.7168

143.0789,
142.2083, 155.8903

23.6343, 22.3979,
24.6942

177.8553,
177.4845, 194.4669

15.1858, 14.1496,
15.6324

217.8543,
218.1593, 238.9341

9.0371, 8.2248,
9.1129

263.4412,
264.6173, 289.7104

4.8227, 4.2391,
4.7171

314.9813,

2.1773, 1.8082,

317.2427, 347.2143

2.0264

372.8401,
376.4200, 411.8645

■ 0.7307, 0.4923,
0.5715

■ 0.0000, 0.0000,
0.0000

■ 66.4315, 64.9281,
71.3184

■ 66.4315, 64.9281,
71.3184

■ 59.3946, 53.9722,
59.3588

■ 74.4929, 77.6009,
84.6400

■ 53.3349, 44.6508,
48.7131

■ 83.6127, 92.0513,
99.3612

■ 48.2095, 36.8874,
39.3363

■ 86.7653, 95.7291,
108.5123

■ 43.9701, 30.5961,
31.1793

■ 40.5638, 25.6826,
24.1896

■ 37.9321, 22.0416,
18.3104

■ 36.0080, 19.5523,
13.4798

■ 34.7123, 18.0700,
9.6285

■ 34.0116, 17.4116,
7.1046

Harmonies

Analogous

The Analogous color harmony consists of three colors that are next to each other on the color wheel.



65.6727, 64.9281, 78.0683



66.4315, 64.9281, 71.3184



65.8989, 64.9281, 64.8121

Triad

The Triadic color harmony groups three colors that are evenly spaced from another and form a triangle on the color wheel.



66.4315, 64.9281, 71.3184



59.6221, 64.9281, 59.6033



59.2559, 64.9281, 82.3958

Complementary

The Complementary color scheme is a pair of colors which are on the opposite of each other on the color wheel.



66.4315, 64.9281, 71.3184



66.7995, 75.3185, 80.8329

Split Complementary

Split-complementary colors differ from the complementary color scheme. The scheme consists of three colors, the original color and two neighbors of the complement color.



57.7067, 64.9281, 76.9250



66.4315, 64.9281, 71.3184



57.9143, 64.9281, 63.8024

Square

The Square scheme is like the rectangle color scheme, but the four colors are evenly spaced on the color wheel.



66.4315, 64.9281, 71.3184



61.9293, 64.9281, 58.3133



57.2219, 64.9281, 70.0766



61.4957, 64.9281, 84.7174

Rectangle

The Rectangle color scheme consists of four colors that form a rectangle on the color wheel.



66.4315, 64.9281, 71.3184



64.8907, 64.9281, 61.4314



57.2219, 64.9281, 70.0766



58.6393, 64.9281, 80.8474

Sweetspot

The Sweet Spot groups the original color and five complimentary colors.



66.4333, 64.9310, 71.3198



90.7475, 93.2101, 101.8700



66.4195, 64.6304, 84.5763



19.2556, 19.6861, 21.5281



0.0000, 0.0000, 0.0000



20.3446, 21.4041, 23.3091

Same Dimension

The Same Dimension uses a secret algorithm to generate beautiful new colors.



66.4333, 64.9310, 71.3198



80.9151, 77.7858, 85.5197



66.7549, 67.1487, 66.5728



14.5518, 14.4379, 15.8399



19.1147, 9.7801, 4.2329



1.4522, 0.7386, 0.5219

Inverse Universe

The Inverse Universe completely reimagines the original color for something new.



66.4333, 64.9310, 71.3198



80.9151, 77.7858, 85.5197



66.4155, 72.7842, 86.1504



14.5518, 14.4379, 15.8399



19.1147, 9.7801, 4.2329



1.4522, 0.7386, 0.5219

Previews

White Background



This preview shows how the XYZ color 66.4315, 64.9281, 71.3184 looks on a white background.

Color Contrast Check

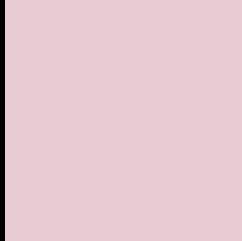
Large Text (above 18pt) WCAG AA × Fail

Any Text WCAG AA × Fail

Large Text (above 18pt) WCAG AAA × Fail

Any Text WCAG AAA × Fail

Black Background



This preview shows how the XYZ color 66.4315, 64.9281, 71.3184 looks on a black background.

Color Contrast Check

Large Text (above 18pt) WCAG AA ✓ Pass

Any Text WCAG AA ✓ Pass

Large Text (above 18pt) WCAG AAA ✓ Pass

Any Text WCAG AAA ✓ Pass

If you want to check with other color combinations, try the [Color Contrast Checker](#).

XYZ 66.4315, 64.9281, 71.3184

Background



This preview shows how black text looks on a background with the XYZ color 66.4315, 64.9281, 71.3184.



This preview shows how white text looks on a background with the XYZ color 66.4315, 64.9281,

71.3184.

Color Blindness Simulation

Color vision deficiency is a very complex topic, and I could not describe the different causes any better than Wikipedia does, so if you want to learn more, you should check out their [article about color blindness](#).

Dichromacy



Original Color

66.4315, 64.9281, 71.3184

Protanopia

62.7529, 65.1456, 73.5569

Deuteranopia

66.4315, 64.9281, 71.3184



Tritanopia

67.4208, 64.9822, 76.0072

Trichromacy



Original Color

66.4315, 64.9281, 71.3184

Protanomaly

64.2087, 65.1824, 72.8156

Deuteranomaly

66.4315, 64.9281, 71.3184

Tritanomaly

67.0293, 64.8255, 73.9455

Monochromacy



Original Color

66.4315, 64.9281, 71.3184

Achromatopsia

63.2451, 66.5387, 72.4607

Achromatomaly

64.5720, 66.1129, 72.3085

CSS Examples

Text

The CSS property to change the color of the text to XYZ 66.4315, 64.9281, 71.3184 is called "color". The color property can be set on classes, ids or directly on the HTML element.

This example shows how text in the color rgb(231, 204, 212) looks like.

```
.text, #text, p{  
    color:rgb(231, 204, 212)  
}
```

If you want to add a text shadow in that color use the text-shadow property, you can generate a text shadow directly with our [CSS Text Shadow Generator](#).

Here you see how black text with a 4 pixel rgb(231, 204, 212) colored shadow looks like.

```
.shadow{ text-shadow: 4px 4px 2px rgb(231, 204, 212) }
```

Border

The CSS property to change the border of an element to XYZ 66.4315, 64.9281, 71.3184 is called "border". The border property can be set on classes, ids or directly on the HTML element.

This example shows the color as border, it can be applied via the CSS property "border" or "border-color".

```
.border, #border, table{ border:4px solid rgb(231, 204, 212) }
```


If only the border color should be changed use the property `border-color`.

```
.border{ border-color:rgb(231, 204, 212) }
```

If you want to add a box shadow in that color use:

Here you see how a box with a 4 pixel `rgb(231, 204, 212)` colored shadow looks like.

```
.boxshadow{ -moz-box-shadow:4px 4px 4px 4px rgb(231, 204, 212); -webkit-box-shadow:4px 4px 4px 4px rgb(231, 204, 212); box-shadow:4px 4px 4px 4px rgb(231, 204, 212) }
```

Background

The CSS property to change the background color of an element to XYZ 66.4315, 64.9281, 71.3184 is called "background". The background property can be set on classes, ids or directly on the HTML element.

```
.background, #background, body{  
background: rgb(231, 204, 212) }
```

If only the background color should be changed can be used:

```
.background{ background-color: rgb(231,  
204, 212) }
```

This example shows the color as background, it is applied via the CSS property "background".

To optimize and compress your CSS code, you can use our [online CSS compressor and optimizer](#) based on csstidy. If you want to create a linear or radial gradient as background or border, check our [CSS Gradient Generator](#).

Hey! You found this booklet interesting? Support Converting Colors with the new Membership Option!

The pro membership hides all ads, plus gives you double the colors in the color bucket, and more awesome pro features!

[Learn more, Memberships starting at \\$2.50/m!](#)

**Follow me
on Twitter!**

@ConvertingColor