

Converting Colors

XYZ(66.6342, 67.8073, 60.6151)

Have a look what the booklet for
XYZ(66.6342, 67.8073, 60.6151)
contains.

XYZ(66.6361, 67.8072, 60.6149)	3
<i>Conversions</i>	4
<i>Details</i>	6
<i>Harmonies</i>	12
<i>Previews</i>	24
<i>Color Blindness Simulation</i>	28
<i>CSS Examples</i>	31

Color

**XYZ(66.6361, 67.8072,
60.6149)**

Conversions

Conversions Part 1

Format	Color
Hex	E9D3C2
RGB	233, 211, 194
RGB Percent	91%, 83%, 76%
CMY	0.0863, 0.1725, 0.2392
CMYK	0.00, 0.09, 0.17, 0.09
HSL	26°, 47%, 84%
HSV	26°, 17%, 91%
XYZ	66.6361, 67.8072, 60.6149
YIQ	215.6400, 18.5690, -0.6230

Conversions

Conversions Part 2

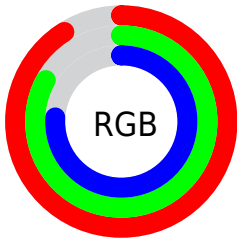
Format	Color
R_{YB}	233, 224, 194
Decimal	15324098
CIE _{Lab}	85.91, 4.91, 11.18
CIE _{LCh}	86, 12.213, 66.271
Yxy	67.8072, 0.3416, 0.3476
Android (android.graphics.Color)	4293514178 (0xFFE9D3C2)
YUV	215.6400, -10.6685, 15.2247
Hunter-Lab	82.3451, 0.3435, 13.9978

Details

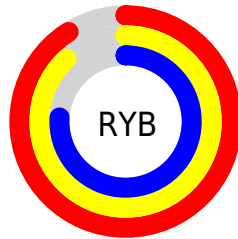
The XYZ color **66.6361, 67.8072, 60.6149** is a light color, and the websafe version is hex **CCCCCC**. A complement of this color would be **61.5115, 66.4627, 86.6778**, and the grayscale version is **65.0883, 68.4779, 74.5724**.

A 20% lighter version of the original color is **94.2553, 99.6821, 104.7153**, and **34.9221, 35.3545, 29.7945** is the 20% darker color. If you saturate the color by 10%, you get **61.0899, 60.5791, 46.8522**, and if you desaturate by 10%, it is **72.8632, 75.7394, 76.6304**.

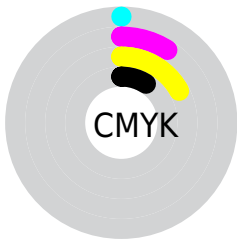
Distribution



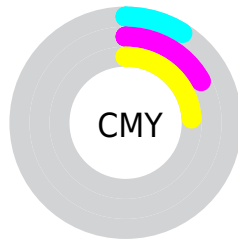
- Red (91%)
- Green (83%)
- Blue (76%)



- Red (91%)
- Yellow (88%)
- Blue (76%)



- Cyan (0%)
- Magenta (9%)
- Yellow (17%)
- Black (9%)



- Cyan (9%)
- Magenta (17%)
- Yellow (24%)

Brightness & Saturation Gradients

These gradients show how the XYZ color 66.6361, 67.8072, 60.6149 changes by changing the brightness by 10 percent. The first figure shows a shift by +10% for each color and the second figure -10%.

Similar to the brightness gradients but the following saturation gradients show a change of the XYZ color 66.6361, 67.8072, 60.6149 by changing the saturation by 10% instead.

66.6361, 67.8072,
60.6149

66.6361, 67.8072,
60.6149

438.1012,
452.8126, 444.7280

49.0586, 49.7409,
43.4859

113.4515,
116.0763, 107.2732

34.8807, 35.2076,
29.9323

143.4201,
147.0479, 137.6397

23.7370, 23.8228,
19.5356

178.2497,
183.0900, 173.2557

15.2624, 15.2022,
11.8772

218.3058,
224.5870, 214.5398

9.0912, 8.9614,
6.5386

263.9536,
271.9234, 261.9105

4.8583, 4.7160,
3.1012

315.5585,

2.1983, 2.0816,

325.4836, 315.7864

1.1466

373.4860,
385.6518, 376.5861

■ 0.7418, 0.6543,
0.0000

■ 0.0000, 0.0000,
0.0000

■ 66.6361, 67.8072,
60.6149

■ 66.6361, 67.8072,
60.6149

■ 61.0899, 60.5791,
46.8522

■ 72.8632, 75.7394,
76.6304

■ 56.1938, 54.0255,
35.2354

■ 79.7897, 84.3858,
94.9902

■ 51.9223, 48.1281,
25.6555

■ 85.9733, 93.1815,
108.0623

■ 48.2461, 42.8643,
17.9917

■ 87.4145, 96.0637,
108.5427

■ 45.1333, 38.2097,
12.1108

■ 42.5481, 34.1381,
7.8616

■ 40.4496, 30.6205,
5.0679

■ 38.7877, 27.6235,
3.5058

■ 38.3158, 26.7465,
3.1431

Harmonies

Analogous

The Analogous color harmony consists of three colors that are next to each other on the color wheel.



68.8804, 67.8072, 65.0922



66.6361, 67.8072, 60.6149



63.8633, 67.8072, 59.5607

Triad

The Triadic color harmony groups three colors that are evenly spaced from another and form a triangle on the color wheel.



66.6361, 67.8072, 60.6149



59.2518, 67.8072, 75.5250



67.6815, 67.8072, 86.9507

Complementary

The Complementary color scheme is a pair of colors which are on the opposite of each other on the color wheel.



66.6361, 67.8072, 60.6149



61.5115, 66.4627, 86.6778

Split Complementary

Split-complementary colors differ from the complementary color scheme. The scheme consists of three colors, the original color and two neighbors of the complement color.



65.0377, 67.8072, 90.2148



66.6361, 67.8072, 60.6149



60.2113, 67.8072, 83.3179

Square

The Square scheme is like the rectangle color scheme, but the four colors are evenly spaced on the color wheel.



66.6361, 67.8072, 60.6149



59.6519, 67.8072, 67.8072



62.3097, 67.8072, 88.8396



69.4960, 67.8072, 80.2004

Rectangle

The Rectangle color scheme consists of four colors that form a rectangle on the color wheel.



66.6361, 67.8072, 60.6149



62.0986, 67.8072, 60.8684



62.3097, 67.8072, 88.8396



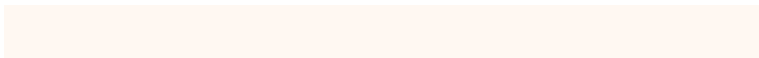
66.8574, 67.8072, 88.5134

Sweetspot

The Sweet Spot groups the original color and five complimentary colors.



66.6379, 67.8102, 60.6163



90.8134, 94.7034, 97.6946



65.3043, 60.8711, 73.3416



19.3141, 20.1149, 20.5862



0.0000, 0.0000, 0.0000



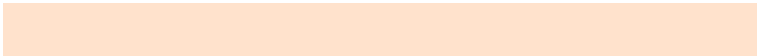
20.3446, 21.4041, 23.3091

Same Dimension

The Same Dimension uses a secret algorithm to generate beautiful new colors.



66.6379, 67.8102, 60.6163



79.3999, 80.1412, 68.4107



71.7507, 78.0357, 62.3206



15.6058, 16.1345, 15.8105



21.8595, 15.4132, 1.8229



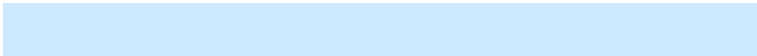
1.8106, 1.3986, 0.1745

Inverse Universe

The Inverse Universe completely reimagines the original color for something new.



61.5115, 66.4627, 86.6778



72.0238, 78.2012, 105.9060



56.8325, 57.1045, 85.1181



14.9361, 15.9586, 19.2154



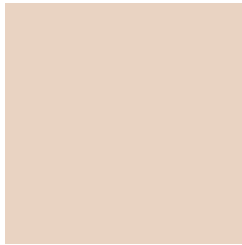
13.1078, 12.8625, 45.5348



1.1247, 1.2009, 3.6074

Previews

White Background



This preview shows how the XYZ color 66.6361, 67.8072, 60.6149 looks on a white background.

Color Contrast Check

Large Text (above 18pt) WCAG AA × Fail

Any Text WCAG AA × Fail

Large Text (above 18pt) WCAG AAA × Fail

Any Text WCAG AAA × Fail

Black Background



This preview shows how the XYZ color 66.6361, 67.8072, 60.6149 looks on a black background.

Color Contrast Check

Large Text (above 18pt) WCAG AA ✓ Pass

Any Text WCAG AA ✓ Pass

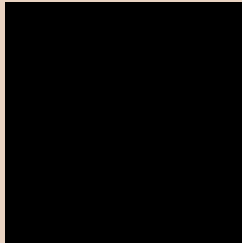
Large Text (above 18pt) WCAG AAA ✓ Pass

Any Text WCAG AAA ✓ Pass

If you want to check with other color combinations, try the [Color Contrast Checker](#).

XYZ 66.6361, 67.8072, 60.6149

Background



This preview shows how black text looks on a background with the XYZ color 66.6361, 67.8072, 60.6149.



This preview shows how white text looks on a background with the XYZ color 66.6361, 67.8072,

Color Blindness Simulation

Color vision deficiency is a very complex topic, and I could not describe the different causes any better than Wikipedia does, so if you want to learn more, you should check out their [article about color blindness](#).

Dichromacy



Original Color

66.6361, 67.8072, 60.6149

Protanopia

64.4418, 67.7666, 61.9084

Deuteranopia

69.1253, 67.6205, 61.0385



Tritanopia

70.5572, 67.9579, 79.2105

Trichromacy



Original Color

66.6361, 67.8072, 60.6149

Protanomaly

65.3231, 67.8595, 61.2851

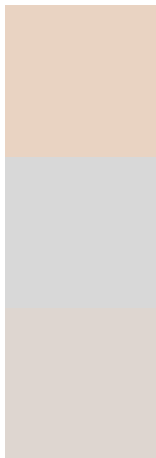
Deuteranomaly

68.0028, 67.4026, 61.0556

Tritanomaly

69.0316, 67.6981, 71.7160

Monochromacy



Original Color

66.6361, 67.8072, 60.6149

Achromatopsia

65.2694, 68.6685, 74.7800

Achromatomaly

65.5559, 68.1768, 69.3788

CSS Examples

Text

The CSS property to change the color of the text to XYZ 66.6361, 67.8072, 60.6149 is called "color". The color property can be set on classes, ids or directly on the HTML element.

This example shows how text in the color `rgb(233, 211, 194)` looks like.

```
.text, #text, p{  
    color:rgb(233, 211, 194)  
}
```

If you want to add a text shadow in that color use the text-shadow property, you can generate a text shadow directly with our [CSS Text Shadow Generator](#).

Here you see how black text with a 4 pixel rgb(233, 211, 194) colored shadow looks like.

```
.shadow{ text-shadow: 4px 4px 2px rgb(233, 211, 194) }
```

Border

The CSS property to change the border of an element to XYZ 66.6361, 67.8072, 60.6149 is called "border". The border property can be set on classes, ids or directly on the HTML element.

This example shows the color as border, it can be applied via the CSS property "border" or "border-color".

```
.border, #border, table{ border:4px solid rgb(233, 211, 194) }
```


If only the border color should be changed use the property `border-color`.

```
.border{ border-color:rgb(233, 211, 194) }
```

If you want to add a box shadow in that color use:

Here you see how a box with a 4 pixel `rgb(233, 211, 194)` colored shadow looks like.

```
.boxshadow{ -moz-box-shadow:4px 4px 4px  
4px rgb(233, 211, 194); -webkit-box-  
shadow:4px 4px 4px 4px rgb(233, 211, 194);  
box-shadow:4px 4px 4px 4px rgb(233, 211,  
194) }
```

Background

The CSS property to change the background color of an element to XYZ 66.6361, 67.8072, 60.6149 is called "background". The background property can be set on classes, ids or directly on the HTML element.

```
.background, #background, body{  
background: rgb(233, 211, 194) }
```

If only the background color should be changed can be used:

```
.background{ background-color: rgb(233,  
211, 194) }
```

This example shows the color as background, it is applied via the CSS property "background".

To optimize and compress your CSS code, you can use our [online CSS compressor and optimizer](#) based on csstidy. If you want to create a linear or radial gradient as background or border, check our [CSS Gradient Generator](#).

Hey! You found this booklet interesting? Support Converting Colors with the new Membership Option!

The pro membership hides all ads, plus gives you double the colors in the color bucket, and more awesome pro features!

[Learn more, Memberships starting at \\$2.50/m!](#)

**Follow me
on Twitter!**

@ConvertingColor