

Converting Colors

XYZ(66.6474, 67.0558, 63.4648)

Have a look what the booklet for
XYZ(66.6474, 67.0558, 63.4648)
contains.

XYZ(66.7135, 67.0481, 63.4582)	3
<i>Conversions</i>	4
<i>Details</i>	6
<i>Harmonies</i>	12
<i>Previews</i>	24
<i>Color Blindness Simulation</i>	28
<i>CSS Examples</i>	31

Color

**XYZ(66.7135, 67.0481,
63.4582)**

Conversions

Conversions Part 1

Format	Color
Hex	E9D1C7
RGB	233, 209, 199
RGB Percent	91%, 82%, 78%
CMY	0.0863, 0.1804, 0.2196
CMYK	0.00, 0.10, 0.15, 0.09
HSL	18°, 44%, 85%
HSV	18°, 15%, 91%
XYZ	66.7135, 67.0481, 63.4582
YIQ	215.0360, 17.5140, 1.9780

Conversions

Conversions Part 2

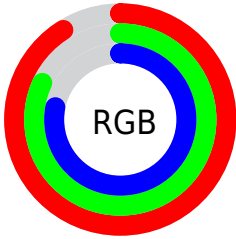
Format	Color
R _Y B	233, 213, 199
Decimal	15323591
CIE Lab	85.53, 6.73, 7.99
CIE LCh	86, 10.447, 49.881
Yxy	67.0481, 0.3383, 0.3400
Android (android.graphics.Color)	4293513671 (0xFFE9D1C7)
YUV	215.0360, -7.9057, 15.7544
Hunter-Lab	81.8829, 2.1365, 11.3690

Details

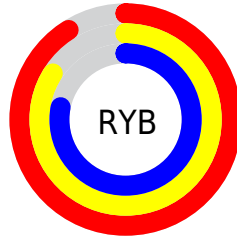
The XYZ color **66.7135, 67.0481, 63.4582** is a light color, and the websafe version is hex **CCCCCC**. A complement of this color would be **64.6484, 70.7990, 87.3495**, and the grayscale version is **64.6608, 68.0282, 74.0827**.

A 20% lighter version of the original color is **95.0500, 100.0000, 108.9000**, and **34.9636, 34.8341, 31.6689** is the 20% darker color. If you saturate the color by 10%, you get **60.3847, 58.3930, 49.0079**, and if you desaturate by 10%, it is **73.8767, 76.7078, 80.2317**.

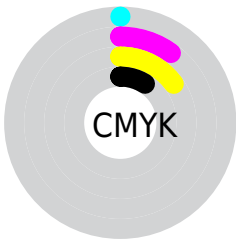
Distribution



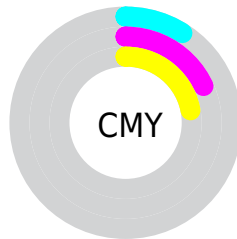
- Red (91%)
- Green (82%)
- Blue (78%)



- Red (91%)
- Yellow (84%)
- Blue (78%)



- Cyan (0%)
- Magenta (10%)
- Yellow (15%)
- Black (9%)



- Cyan (9%)
- Magenta (18%)
- Yellow (22%)

Brightness & Saturation Gradients

These gradients show how the XYZ color 66.7135, 67.0481, 63.4582 changes by changing the brightness by 10 percent. The first figure shows a shift by +10% for each color and the second figure -10%.

Similar to the brightness gradients but the following saturation gradients show a change of the XYZ color 66.7135, 67.0481, 63.4582 by changing the saturation by 10% instead.

66.7135, 67.0481,
63.4582

66.7135, 67.0481,
63.4582

438.3728,
450.1160, 455.3841

49.1217, 49.1237,
45.7686

113.5619,
114.9893, 111.4222

34.9309, 34.7176,
31.7159

143.5491,
145.7750, 142.5338

23.7759, 23.4454,
20.8816

178.3989,
181.6165, 178.9564

15.2913, 14.9228,
12.8471

218.4765,
222.8983, 221.1085

9.1118, 8.7652,
7.1938

264.1473,
270.0047, 269.4089

4.8718, 4.5883,
3.5033

315.7768,

2.2062, 2.0078,

323.3202, 324.2759

1.3570

373.7301,
383.2292, 386.1281

■ 0.7460, 0.6120,
0.1079

■ 0.0000, 0.0000,
0.0000

■ 66.7135, 67.0481,
63.4582

■ 66.7135, 67.0481,
63.4582

■ 60.3847, 58.3930,
49.0079

■ 73.8767, 76.7078,
80.2317

■ 54.8533, 50.7008,
36.7736

■ 81.8985, 87.3942,
99.4208

■ 50.0880, 43.9400,
26.6456

■ 87.4145, 96.0637,
108.5427

■ 46.0527, 38.0742,
18.5033

■ 42.7083, 33.0640,
12.2140

■ 40.0120, 28.8673,
7.6282

■ 37.9150, 25.4377,
4.5728

■ 36.3603, 22.7232,
2.8370

■ 35.7057, 21.5261,
2.2731

Harmonies

Analogous

The Analogous color harmony consists of three colors that are next to each other on the color wheel.



68.1161, 67.0481, 68.6488



66.7135, 67.0481, 63.4582



64.5324, 67.0481, 60.8781

Triad

The Triadic color harmony groups three colors that are evenly spaced from another and form a triangle on the color wheel.



66.7135, 67.0481, 63.4582



59.3392, 67.0481, 70.7315



65.2918, 67.0481, 85.9981

Complementary

The Complementary color scheme is a pair of colors which are on the opposite of each other on the color wheel.



66.7135, 67.0481, 63.4582



64.6484, 70.7990, 87.3495

Split Complementary

Split-complementary colors differ from the complementary color scheme. The scheme consists of three colors, the original color and two neighbors of the complement color.



62.9287, 67.0481, 86.6418



66.7135, 67.0481, 63.4582



59.5310, 67.0481, 77.5396

Square

The Square scheme is like the rectangle color scheme, but the four colors are evenly spaced on the color wheel.



66.7135, 67.0481, 63.4582



60.3006, 67.0481, 64.9014



60.8314, 67.0481, 83.4620



67.2813, 67.0481, 81.7543

Rectangle

The Rectangle color scheme consists of four colors that form a rectangle on the color wheel.



66.7135, 67.0481, 63.4582



62.9473, 67.0481, 60.8697



60.8314, 67.0481, 83.4620



64.5136, 67.0481, 86.6524

Sweetspot

The Sweet Spot groups the original color and five complimentary colors.



66.7153, 67.0511, 63.4596



91.1973, 94.8531, 99.7281



67.3972, 63.5188, 78.7803



19.3690, 20.1002, 20.9882



0.0000, 0.0000, 0.0000



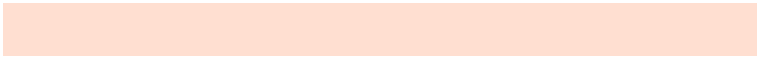
20.3446, 21.4041, 23.3091

Same Dimension

The Same Dimension uses a secret algorithm to generate beautiful new colors.



66.7153, 67.0511, 63.4596



79.0436, 78.4335, 71.3597



71.0104, 75.6413, 64.8913



15.4266, 15.7763, 15.7508



20.3534, 12.4011, 1.3209



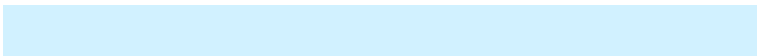
1.6790, 1.1353, 0.1306

Inverse Universe

The Inverse Universe completely reimagines the original color for something new.



64.6484, 70.7990, 87.3495



75.9745, 83.9933, 106.8158



60.4217, 62.3456, 85.9406



15.1217, 16.3298, 19.2772



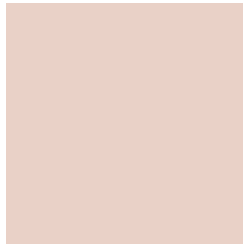
16.0356, 18.7182, 46.5108



1.3418, 1.6352, 3.6798

Previews

White Background



This preview shows how the XYZ color 66.7135, 67.0481, 63.4582 looks on a white background.

Color Contrast Check

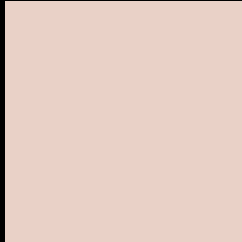
Large Text (above 18pt) WCAG AA × Fail

Any Text WCAG AA × Fail

Large Text (above 18pt) WCAG AAA × Fail

Any Text WCAG AAA × Fail

Black Background



This preview shows how the XYZ color 66.7135, 67.0481, 63.4582 looks on a black background.

Color Contrast Check

Large Text (above 18pt) WCAG AA ✓ Pass

Any Text WCAG AA ✓ Pass

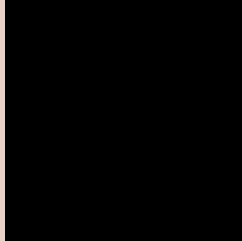
Large Text (above 18pt) WCAG AAA ✓ Pass

Any Text WCAG AAA ✓ Pass

If you want to check with other color combinations, try the [Color Contrast Checker](#).

XYZ 66.7135, 67.0481, 63.4582

Background



This preview shows how black text looks on a background with the XYZ color 66.7135, 67.0481, 63.4582.



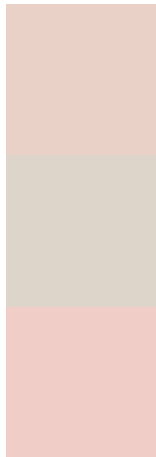
This preview shows how white text looks on a background with the XYZ color 66.7135, 67.0481,

63.4582.

Color Blindness Simulation

Color vision deficiency is a very complex topic, and I could not describe the different causes any better than Wikipedia does, so if you want to learn more, you should check out their [article about color blindness](#).

Dichromacy



Original Color

66.7135, 67.0481, 63.4582

Protanopia

64.1557, 67.1777, 64.8436

Deuteranopia

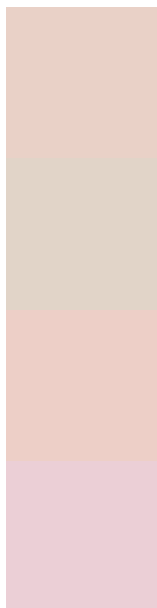
68.3153, 66.7914, 63.3243



Tritanopia

69.8482, 67.2494, 78.4063

Trichromacy



Original Color

66.7135, 67.0481, 63.4582

Protanomaly

65.0201, 67.2646, 64.2000

Deuteranomaly

67.5467, 66.7537, 63.3575

Tritanomaly

68.7114, 67.1429, 72.9567

Monochromacy



Original Color

66.7135, 67.0481, 63.4582

Achromatopsia

64.5905, 67.9542, 74.0022

Achromatomaly

65.4271, 67.7215, 69.9448

CSS Examples

Text

The CSS property to change the color of the text to XYZ 66.7135, 67.0481, 63.4582 is called "color". The color property can be set on classes, ids or directly on the HTML element.

This example shows how text in the color `rgb(233, 209, 199)` looks like.

```
.text, #text, p{  
    color:rgb(233, 209, 199)  
}
```

If you want to add a text shadow in that color use the text-shadow property, you can generate a text shadow directly with our [CSS Text Shadow Generator](#).

Here you see how black text with a 4 pixel rgb(233, 209, 199) colored shadow looks like.

```
.shadow{ text-shadow: 4px 4px 2px rgb(233, 209, 199) }
```

Border

The CSS property to change the border of an element to XYZ 66.7135, 67.0481, 63.4582 is called "border". The border property can be set on classes, ids or directly on the HTML element.

This example shows the color as border, it can be applied via the CSS property "border" or "border-color".

```
.border, #border, table{ border:4px solid rgb(233, 209, 199) }
```


If only the border color should be changed use the property `border-color`.

```
.border{ border-color:rgb(233, 209, 199) }
```

If you want to add a box shadow in that color use:

Here you see how a box with a 4 pixel `rgb(233, 209, 199)` colored shadow looks like.

```
.boxshadow{ -moz-box-shadow:4px 4px 4px  
4px rgb(233, 209, 199); -webkit-box-  
shadow:4px 4px 4px 4px rgb(233, 209, 199);  
box-shadow:4px 4px 4px 4px rgb(233, 209,  
199) }
```

Background

The CSS property to change the background color of an element to XYZ 66.7135, 67.0481, 63.4582 is called "background". The background property can be set on classes, ids or directly on the HTML element.

```
.background, #background, body{  
background: rgb(233, 209, 199) }
```

If only the background color should be changed can be used:

```
.background{ background-color: rgb(233,  
209, 199) }
```

This example shows the color as background, it is applied via the CSS property "background".

To optimize and compress your CSS code, you can use our [online CSS compressor and optimizer](#) based on csstidy. If you want to create a linear or radial gradient as background or border, check our [CSS Gradient Generator](#).

Hey! You found this booklet interesting? Support Converting Colors with the new Membership Option!

The pro membership hides all ads, plus gives you double the colors in the color bucket, and more awesome pro features!

[Learn more, Memberships starting at \\$2.50/m!](#)

**Follow me
on Twitter!**

@ConvertingColor