

Converting Colors

XYZ(66.6691, 67.7991, 70.2198)

Have a look what the booklet for
XYZ(66.6691, 67.7991, 70.2198)
contains.

XYZ(66.8549, 68.0710, 70.5882)	3
<i>Conversions</i>	4
<i>Details</i>	6
<i>Harmonies</i>	12
<i>Previews</i>	24
<i>Color Blindness Simulation</i>	28
<i>CSS Examples</i>	31

Color

**XYZ(66.8549, 68.0710,
70.5882)**

Conversions

Conversions Part 1

Format	Color
Hex	E3D4D2
RGB	227, 212, 210
RGB Percent	89%, 83%, 82%
CMY	0.1098, 0.1686, 0.1765
CMYK	0.00, 0.07, 0.07, 0.11
HSL	7°, 23%, 86%
HSV	7°, 7%, 89%
XYZ	66.8549, 68.0710, 70.5882
YIQ	216.2570, 9.5820, 2.5580

Conversions

Conversions Part 2

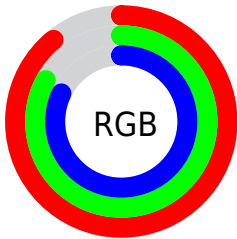
Format	Color
R _Y B	227, 212, 210
Decimal	14931154
CIE Lab	86.04, 4.83, 2.84
CIE LCh	86, 5.603, 30.434
Yxy	68.0710, 0.3253, 0.3312
Android (android.graphics.Color)	4293121234 (0xFFE3D4D2)
YUV	216.2570, -3.0847, 9.4216
Hunter-Lab	82.5052, 0.2566, 7.0274

Details

The XYZ color **66.8549, 68.0710, 70.5882** is a light color, and the websafe version is hex **CCCCCC**. A complement of this color would be **67.3686, 73.0969, 83.2323**, and the grayscale version is **65.4628, 68.8720, 75.0016**.

A 20% lighter version of the original color is **95.0500, 100.0000, 108.9000**, and **35.0710, 35.2849, 36.4147** is the 20% darker color. If you saturate the color by 10%, you get **59.5264, 57.6228, 55.1680**, and if you desaturate by 10%, it is **75.2093, 79.9272, 88.3311**.

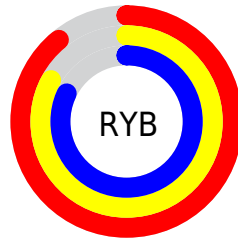
Distribution



Red (89%)

Green (83%)

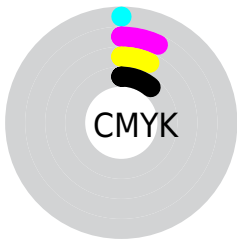
Blue (82%)



Red (89%)

Yellow (83%)

Blue (82%)

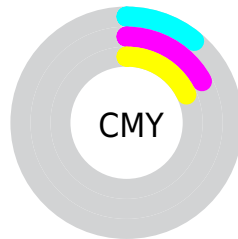


Cyan (0%)

Magenta (7%)

Yellow (7%)

Black (11%)



Cyan (11%)

Magenta (17%)

Yellow (18%)

Brightness & Saturation Gradients

These gradients show how the XYZ color 66.8549, 68.0710, 70.5882 changes by changing the brightness by 10 percent. The first figure shows a shift by +10% for each color and the second figure -10%.

Similar to the brightness gradients but the following saturation gradients show a change of the XYZ color 66.8549, 68.0710, 70.5882 by changing the saturation by 10% instead.

66.8549, 68.0710,
70.5882

66.8549, 68.0710,
70.5882

438.8687,
453.7475, 481.4574

49.2370, 49.9555,
51.5264

113.7634,
116.4537, 121.7362

35.0228, 35.3780,
36.2481

143.7847,
147.4897, 154.6594

23.8470, 23.9542,
24.3347

178.6712,
183.6013, 193.0403

15.3443, 15.2997,
15.3676

218.7882,
225.1730, 237.2973

9.1493, 9.0300,
8.9283

264.5011,
272.5890, 287.8490

4.8966, 4.7607,
4.5983

316.1753,

2.2208, 2.1076,

326.2338, 345.1139

1.9590

374.1760,
386.4919, 409.5105

■ 0.7537, 0.6689,
0.5299

■ 0.0000, 0.0000,
0.0000

■ 66.8549, 68.0710,
70.5882

■ 66.8549, 68.0710,
70.5882

■ 59.5264, 57.6228,
55.1680

■ 75.2093, 79.9272,
88.3311

■ 53.1785, 48.5218,
41.9702

■ 84.5563, 93.2058,
108.1417

■ 47.7713, 40.7157,
30.8934

■ 85.4889, 95.0711,
108.4525

■ 43.2596, 34.1455,
21.8269

■ 39.5947, 28.7476,
14.6496

■ 36.7232, 24.4528,
9.2278

■ 34.5854, 21.1845,
5.4098

■ 33.1129, 18.8560,
3.0182

■ 32.2209, 17.3651,
1.8173

Harmonies

Analogous

The Analogous color harmony consists of three colors that are next to each other on the color wheel.



67.2037, 68.0710, 74.0641



66.8549, 68.0710, 70.5882



65.9272, 68.0710, 68.1274

Triad

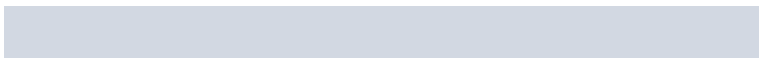
The Triadic color harmony groups three colors that are evenly spaced from another and form a triangle on the color wheel.



66.8549, 68.0710, 70.5882



62.5725, 68.0710, 70.6782



64.7182, 68.0710, 81.4270

Complementary

The Complementary color scheme is a pair of colors which are on the opposite of each other on the color wheel.



66.8549, 68.0710, 70.5882



67.3686, 73.0969, 83.2323

Split Complementary

Split-complementary colors differ from the complementary color scheme. The scheme consists of three colors, the original color and two neighbors of the complement color.



63.4870, 68.0710, 80.4493



66.8549, 68.0710, 70.5882



62.2582, 68.0710, 74.1714

Square

The Square scheme is like the rectangle color scheme, but the four colors are evenly spaced on the color wheel.



66.8549, 68.0710, 70.5882



63.4550, 68.0710, 68.1781



62.5908, 68.0710, 77.7630



65.9601, 68.0710, 80.3927

Rectangle

The Rectangle color scheme consists of four colors that form a rectangle on the color wheel.



66.8549, 68.0710, 70.5882



65.1112, 68.0710, 67.3517



62.5908, 68.0710, 77.7630



64.2894, 68.0710, 81.3224

Sweetspot

The Sweet Spot groups the original color and five complimentary colors.



66.8568, 68.0740, 70.5897



92.8212, 96.8390, 104.1599



68.3189, 67.8623, 80.7449



19.8909, 20.7607, 22.3441



0.0000, 0.0000, 0.0000



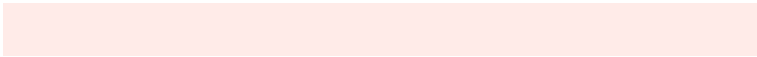
20.3446, 21.4041, 23.3091

Same Dimension

The Same Dimension uses a secret algorithm to generate beautiful new colors.



66.8568, 68.0740, 70.5897



85.4509, 86.3657, 88.5477



69.0325, 72.4255, 71.3149



14.5131, 14.6402, 14.9654



18.7440, 10.0621, 0.9543



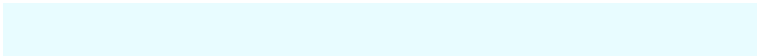
1.4305, 0.8343, 0.0856

Inverse Universe

The Inverse Universe completely reimagines the original color for something new.



67.3686, 73.0969, 83.2323



86.2480, 94.1902, 108.2425



65.1329, 68.6256, 82.4871



14.6548, 16.0310, 18.4662



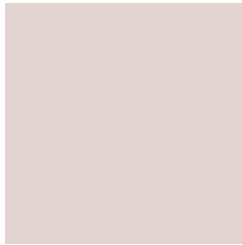
20.2210, 27.5040, 46.6262



1.5355, 2.1149, 3.4593

Previews

White Background



This preview shows how the XYZ color 66.8549, 68.0710, 70.5882 looks on a white background.

Color Contrast Check

Large Text (above 18pt) WCAG AA × Fail

Any Text WCAG AA × Fail

Large Text (above 18pt) WCAG AAA × Fail

Any Text WCAG AAA × Fail

Black Background



This preview shows how the XYZ color 66.8549, 68.0710, 70.5882 looks on a black background.

Color Contrast Check

Large Text (above 18pt) WCAG AA ✓ Pass

Any Text WCAG AA ✓ Pass

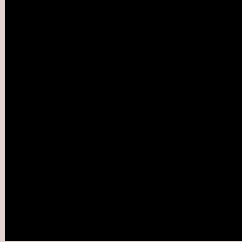
Large Text (above 18pt) WCAG AAA ✓ Pass

Any Text WCAG AAA ✓ Pass

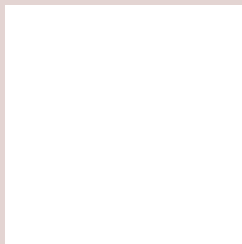
If you want to check with other color combinations, try the [Color Contrast Checker](#).

XYZ 66.8549, 68.0710, 70.5882

Background



This preview shows how black text looks on a background with the XYZ color 66.8549, 68.0710, 70.5882.



This preview shows how white text looks on a background with the XYZ color 66.8549, 68.0710,

70.5882.

Color Blindness Simulation

Color vision deficiency is a very complex topic, and I could not describe the different causes any better than Wikipedia does, so if you want to learn more, you should check out their [article about color blindness](#).

Dichromacy



Original Color

66.8549, 68.0710, 70.5882

Protanopia

65.3196, 68.0119, 71.3129

Deuteranopia

69.5736, 67.9920, 71.0849



Tritanopia

69.0872, 68.2422, 81.4823

Trichromacy



Original Color

66.8549, 68.0710, 70.5882

Protanomaly

65.9835, 67.9796, 71.2717

Deuteranomaly

68.4900, 67.7965, 71.1042

Tritanomaly

68.2074, 68.2498, 77.2888

Monochromacy



Original Color

66.8549, 68.0710, 70.5882

Achromatopsia

65.2694, 68.6685, 74.7800

Achromatomaly

65.9532, 68.6716, 73.3972

CSS Examples

Text

The CSS property to change the color of the text to XYZ 66.8549, 68.0710, 70.5882 is called "color". The color property can be set on classes, ids or directly on the HTML element.

This example shows how text in the color rgb(227, 212, 210) looks like.

```
.text, #text, p{  
    color:rgb(227, 212, 210)  
}
```

If you want to add a text shadow in that color use the text-shadow property, you can generate a text shadow directly with our [CSS Text Shadow Generator](#).

Here you see how black text with a 4 pixel rgb(227, 212, 210) colored shadow looks like.

```
.shadow{ text-shadow: 4px 4px 2px rgb(227, 212, 210) }
```

Border

The CSS property to change the border of an element to XYZ 66.8549, 68.0710, 70.5882 is called "border". The border property can be set on classes, ids or directly on the HTML element.

This example shows the color as border, it can be applied via the CSS property "border" or "border-color".

```
.border, #border, table{ border:4px solid rgb(227, 212, 210) }
```


If only the border color should be changed use the property `border-color`.

```
.border{ border-color:rgb(227, 212, 210) }
```

If you want to add a box shadow in that color use:

Here you see how a box with a 4 pixel `rgb(227, 212, 210)` colored shadow looks like.

```
.boxshadow{ -moz-box-shadow:4px 4px 4px  
4px rgb(227, 212, 210); -webkit-box-  
shadow:4px 4px 4px 4px rgb(227, 212, 210);  
box-shadow:4px 4px 4px 4px rgb(227, 212,  
210) }
```

Background

The CSS property to change the background color of an element to XYZ 66.8549, 68.0710, 70.5882 is called "background". The background property can be set on classes, ids or directly on the HTML element.

```
.background, #background, body{  
background: rgb(227, 212, 210) }
```

If only the background color should be changed can be used:

```
.background{ background-color: rgb(227,  
212, 210) }
```

This example shows the color as background, it is applied via the CSS property "background".

To optimize and compress your CSS code, you can use our [online CSS compressor and optimizer](#) based on csstidy. If you want to create a linear or radial gradient as background or border, check our [CSS Gradient Generator](#).

Hey! You found this booklet interesting? Support Converting Colors with the new Membership Option!

The pro membership hides all ads, plus gives you double the colors in the color bucket, and more awesome pro features!

[Learn more, Memberships starting at \\$2.50/m!](#)

**Follow me
on Twitter!**

@ConvertingColor