

Converting Colors

XYZ(66.7033, 66.2980, 63.1975)

Have a look what the booklet for
XYZ(66.7033, 66.2980, 63.1975)
contains.

XYZ(66.8826, 66.4113, 63.3264)	3
<i>Conversions</i>	4
<i>Details</i>	6
<i>Harmonies</i>	12
<i>Previews</i>	24
<i>Color Blindness Simulation</i>	28
<i>CSS Examples</i>	31

Color

**XYZ(66.8826, 66.4113,
63.3264)**

Conversions

Conversions Part 1

Format	Color
Hex	EBCFC7
RGB	235, 207, 199
RGB Percent	92%, 81%, 78%
CMY	0.0784, 0.1882, 0.2196
CMYK	0.00, 0.12, 0.15, 0.08
HSL	13°, 47%, 85%
HSV	13°, 15%, 92%
XYZ	66.8826, 66.4113, 63.3264
YIQ	214.4600, 19.2560, 3.4480

Conversions

Conversions Part 2

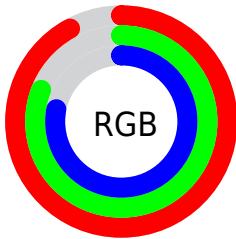
Format	Color
R _Y B	235, 209, 199
Decimal	15454151
CIE Lab	85.21, 8.50, 7.55
CIE LCh	85, 11.365, 41.618
Yxy	66.4113, 0.3402, 0.3378
Android (android.graphics.Color)	4293644231 (0xFFEBCFC7)
YUV	214.4600, -7.6218, 18.0136
Hunter-Lab	81.4931, 3.8846, 10.9723

Details

The XYZ color **66.8826, 66.4113, 63.3264** is a light color, and the websafe version is hex **FFCCCC**. A complement of this color would be **66.0174, 73.0770, 89.2238**, and the grayscale version is **64.2686, 67.6156, 73.6334**.

A 20% lighter version of the original color is **95.0500, 100.0000, 108.9000**, and **35.0925, 34.4105, 31.5804** is the 20% darker color. If you saturate the color by 10%, you get **60.1881, 57.0565, 48.6569**, and if you desaturate by 10%, it is **74.5146, 76.9655, 80.3887**.

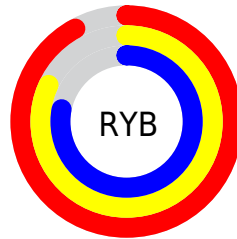
Distribution



Red (92%)

Green (81%)

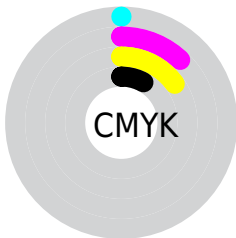
Blue (78%)



Red (92%)

Yellow (82%)

Blue (78%)

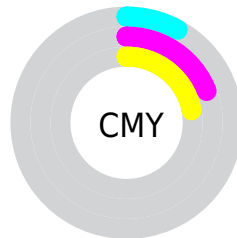


Cyan (0%)

Magenta (12%)

Yellow (15%)

Black (8%)



Cyan (8%)

Magenta (19%)

Yellow (22%)

Brightness & Saturation Gradients

These gradients show how the XYZ color 66.8826, 66.4113, 63.3264 changes by changing the brightness by 10 percent. The first figure shows a shift by +10% for each color and the second figure -10%.

Similar to the brightness gradients but the following saturation gradients show a change of the XYZ color 66.8826, 66.4113, 63.3264 by changing the saturation by 10% instead.

66.8826, 66.4113,
63.3264

66.8826, 66.4113,
63.3264

438.9658,
447.8464, 454.8936

49.2596, 48.6064,
45.6626

113.8029,
114.0765, 111.2304

35.0408, 34.3073,
31.6329

143.8309,
144.7055, 142.3077

23.8610, 23.1298,
20.8188

178.7246,
180.3780, 178.6932

15.3547, 14.6894,
12.8017

218.8493,
221.4783, 220.8056

9.1566, 8.6017,
7.1630

264.5704,
268.3909, 269.0632

4.9014, 4.4823,
3.4843

316.2533,

2.2237, 1.9468,

321.5002, 323.8848

1.3469

374.2633,
381.1906, 385.6887

■ 0.7552, 0.5763,
0.0998

■ 0.0000, 0.0000,
0.0000

■ 66.8826, 66.4113,
63.3264

■ 66.8826, 66.4113,
63.3264

■ 60.1881, 57.0565,
48.6569

■ 74.5146, 76.9655,
80.3887

■ 54.3891, 48.8498,
36.2687

■ 83.1133, 88.7506,
99.9402

■ 49.4481, 41.7491,
26.0477

■ 88.0713, 96.4023,
108.5734

■ 45.3231, 35.7062,
17.8681

■ 41.9681, 30.6696,
11.5913

■ 39.3326, 26.5829,
7.0611

■ 37.3590, 23.3842,
4.0961

■ 35.9800, 21.0032,
2.4743

■ 35.5004, 20.1407,
2.0165

Harmonies

Analogous

The Analogous color harmony consists of three colors that are next to each other on the color wheel.



68.0789, 66.4113, 69.5023



66.8826, 66.4113, 63.3264



64.6906, 66.4113, 59.7137

Triad

The Triadic color harmony groups three colors that are evenly spaced from another and form a triangle on the color wheel.



66.8826, 66.4113, 63.3264



58.5548, 66.4113, 67.9457



64.1207, 66.4113, 87.0525

Complementary

The Complementary color scheme is a pair of colors which are on the opposite of each other on the color wheel.



66.8826, 66.4113, 63.3264



66.0174, 73.0770, 89.2238

Split Complementary

Split-complementary colors differ from the complementary color scheme. The scheme consists of three colors, the original color and two neighbors of the complement color.



61.5789, 66.4113, 86.5651



66.8826, 66.4113, 63.3264



58.4117, 66.4113, 75.1936

Square

The Square scheme is like the rectangle color scheme, but the four colors are evenly spaced on the color wheel.



66.8826, 66.4113, 63.3264



59.9016, 66.4113, 62.2535



59.5050, 66.4113, 82.1067



66.4557, 66.4113, 83.3965

Rectangle

The Rectangle color scheme consists of four colors that form a rectangle on the color wheel.



66.8826, 66.4113, 63.3264



62.9828, 66.4113, 59.0863



59.5050, 66.4113, 82.1067



63.2614, 66.4113, 87.3741

Sweetspot

The Sweet Spot groups the original color and five complimentary colors.



66.8844, 66.4143, 63.3278



89.9827, 93.0420, 97.4177



68.5779, 64.0670, 81.5704



19.1126, 19.7120, 20.5191



0.0000, 0.0000, 0.0000



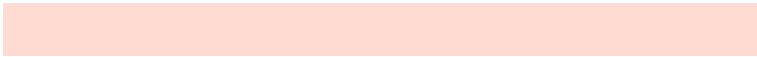
20.3446, 21.4041, 23.3091

Same Dimension

The Same Dimension uses a secret algorithm to generate beautiful new colors.



66.8844, 66.4143, 63.3278



78.1723, 76.6909, 71.0692



71.4417, 75.5289, 64.8469



15.3371, 15.5971, 15.7209



19.8352, 11.3646, 1.1482



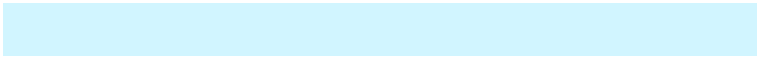
1.6276, 1.0326, 0.1135

Inverse Universe

The Inverse Universe completely reimagines the original color for something new.



66.0174, 73.0770, 89.2238



76.9631, 85.9706, 107.1453



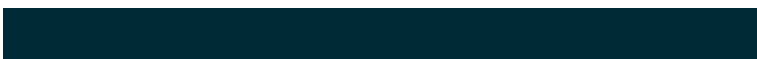
61.3990, 63.8403, 87.6843



15.2171, 16.5206, 19.3090



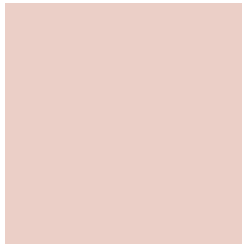
17.8404, 22.3278, 47.1124



1.4707, 1.8929, 3.7227

Previews

White Background



This preview shows how the XYZ color 66.8826, 66.4113, 63.3264 looks on a white background.

Color Contrast Check

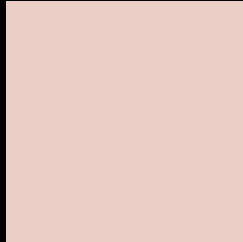
Large Text (above 18pt) WCAG AA × Fail

Any Text WCAG AA × Fail

Large Text (above 18pt) WCAG AAA × Fail

Any Text WCAG AAA × Fail

Black Background



This preview shows how the XYZ color 66.8826, 66.4113, 63.3264 looks on a black background.

Color Contrast Check

Large Text (above 18pt) WCAG AA ✓ Pass

Any Text WCAG AA ✓ Pass

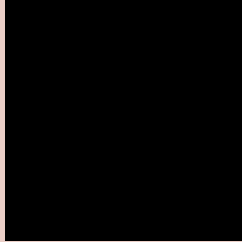
Large Text (above 18pt) WCAG AAA ✓ Pass

Any Text WCAG AAA ✓ Pass

If you want to check with other color combinations, try the [Color Contrast Checker](#).

XYZ 66.8826, 66.4113, 63.3264

Background



This preview shows how black text looks on a background with the XYZ color 66.8826, 66.4113, 63.3264.



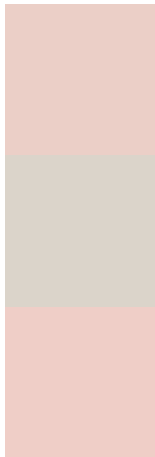
This preview shows how white text looks on a background with the XYZ color 66.8826, 66.4113,

63.3264.

Color Blindness Simulation

Color vision deficiency is a very complex topic, and I could not describe the different causes any better than Wikipedia does, so if you want to learn more, you should check out their [article about color blindness](#).

Dichromacy



Original Color

66.8826, 66.4113, 63.3264

Protanopia

63.4176, 66.4113, 65.3533

Deuteranopia

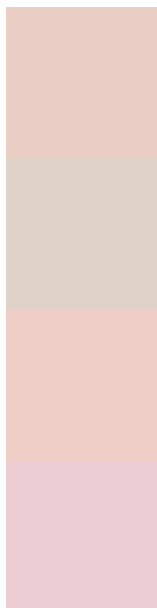
67.9767, 66.6169, 63.3084



Tritanopia

69.7710, 66.5302, 76.8744

Trichromacy



Original Color

66.8826, 66.4113, 63.3264

Protanomaly

64.6405, 66.3178, 64.6520

Deuteranomaly

67.6400, 66.4433, 63.2927

Tritanomaly

68.6400, 66.4206, 71.4901

Monochromacy



Original Color

66.8826, 66.4113, 63.3264

Achromatopsia

63.9157, 67.2443, 73.2291

Achromatomaly

64.9271, 66.7216, 69.7781

CSS Examples

Text

The CSS property to change the color of the text to XYZ 66.8826, 66.4113, 63.3264 is called "color". The color property can be set on classes, ids or directly on the HTML element.

This example shows how text in the color `rgb(235, 207, 199)` looks like.

```
.text, #text, p{  
    color:rgb(235, 207, 199)  
}
```

If you want to add a text shadow in that color use the text-shadow property, you can generate a text shadow directly with our [CSS Text Shadow Generator](#).

Here you see how black text with a 4 pixel rgb(235, 207, 199) colored shadow looks like.

```
.shadow{ text-shadow: 4px 4px 2px rgb(235, 207, 199) }
```

Border

The CSS property to change the border of an element to XYZ 66.8826, 66.4113, 63.3264 is called "border". The border property can be set on classes, ids or directly on the HTML element.

This example shows the color as border, it can be applied via the CSS property "border" or "border-color".

```
.border, #border, table{ border:4px solid rgb(235, 207, 199) }
```


If only the border color should be changed use the property `border-color`.

```
.border{ border-color:rgb(235, 207, 199) }
```

If you want to add a box shadow in that color use:

Here you see how a box with a 4 pixel `rgb(235, 207, 199)` colored shadow looks like.

```
.boxshadow{ -moz-box-shadow:4px 4px 4px  
4px rgb(235, 207, 199); -webkit-box-  
shadow:4px 4px 4px 4px rgb(235, 207, 199);  
box-shadow:4px 4px 4px 4px rgb(235, 207,  
199) }
```

Background

The CSS property to change the background color of an element to XYZ 66.8826, 66.4113, 63.3264 is called "background". The background property can be set on classes, ids or directly on the HTML element.

```
.background, #background, body{  
background: rgb(235, 207, 199) }
```

If only the background color should be changed can be used:

```
.background{ background-color: rgb(235,  
207, 199) }
```

This example shows the color as background, it is applied via the CSS property "background".

To optimize and compress your CSS code, you can use our [online CSS compressor and optimizer](#) based on csstidy. If you want to create a linear or radial gradient as background or border, check our [CSS Gradient Generator](#).

Hey! You found this booklet interesting? Support Converting Colors with the new Membership Option!

The pro membership hides all ads, plus gives you double the colors in the color bucket, and more awesome pro features!

[Learn more, Memberships starting at \\$2.50/m!](#)

**Follow me
on Twitter!**

@ConvertingColor