

Converting Colors

XYZ(66.7044, 65.3037, 60.7150)

Have a look what the booklet for
XYZ(66.7044, 65.3037, 60.7150)
contains.

XYZ(66.7031, 65.3030, 60.7189)	3
<i>Conversions</i>	4
<i>Details</i>	6
<i>Harmonies</i>	12
<i>Previews</i>	24
<i>Color Blindness Simulation</i>	28
<i>CSS Examples</i>	31

Color

**XYZ(66.7031, 65.3030,
60.7189)**

Conversions

Conversions Part 1

Format	Color
Hex	EECCC3
RGB	238, 204, 195
RGB Percent	93%, 80%, 76%
CMY	0.0667, 0.2000, 0.2353
CMYK	0.00, 0.14, 0.18, 0.07
HSL	13°, 56%, 85%
HSV	13°, 18%, 93%
XYZ	66.7031, 65.3030, 60.7189
YIQ	213.1400, 23.1530, 4.4090

Conversions

Conversions Part 2

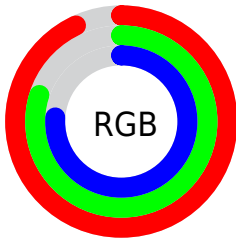
Format	Color
R _Y B	238, 206, 195
Decimal	15649987
CIE Lab	84.64, 10.54, 8.90
CIE LCh	85, 13.791, 40.168
Yxy	65.3030, 0.3461, 0.3388
Android (android.graphics.Color)	4293840067 (0xFFEECCC3)
YUV	213.1400, -8.9430, 21.8022
Hunter-Lab	80.8103, 5.9210, 12.0181

Details

The XYZ color **66.7031, 65.3030, 60.7189** is a light color, and the websafe version is hex **FFCCCC**. A complement of this color would be **65.9572, 73.8121, 91.6603**, and the grayscale version is **63.3881, 66.6892, 72.6246**.

A 20% lighter version of the original color is **94.5707, 99.8083, 106.3760**, and **35.0055, 33.6809, 29.8554** is the 20% darker color. If you saturate the color by 10%, you get **60.0187, 55.9025, 46.2558**, and if you desaturate by 10%, it is **74.3604, 75.9616, 77.6238**.

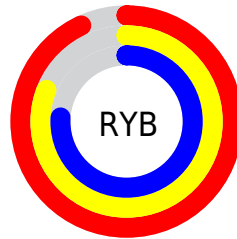
Distribution



Red (93%)

Green (80%)

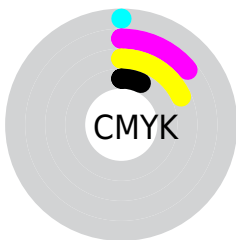
Blue (76%)



Red (93%)

Yellow (81%)

Blue (76%)

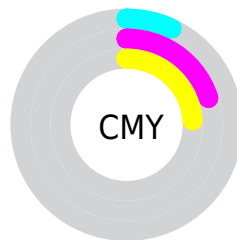


Cyan (0%)

Magenta (14%)

Yellow (18%)

Black (7%)



Cyan (7%)

Magenta (20%)

Yellow (24%)

Brightness & Saturation Gradients

These gradients show how the XYZ color 66.7031, 65.3030, 60.7189 changes by changing the brightness by 10 percent. The first figure shows a shift by +10% for each color and the second figure -10%.

Similar to the brightness gradients but the following saturation gradients show a change of the XYZ color 66.7031, 65.3030, 60.7189 by changing the saturation by 10% instead.

66.7031, 65.3030,
60.7189

66.7031, 65.3030,
60.7189

438.3363,
443.8800, 445.1206

49.1132, 47.7068,
43.5693

113.5470,
112.4854, 107.4254

34.9242, 33.5948,
29.9973

143.5318,
142.8403, 137.8193

23.7707, 22.5825,
19.5845

178.3788,
178.2170, 173.4651

15.2874, 14.2855,
11.9123

218.4535,
218.9998, 214.7812

9.1090, 8.3195,
6.5622

264.1213,
265.5731, 262.1863

4.8700, 4.3001,
3.1156

315.7475,

2.2052, 1.8428,

318.3213, 316.0989

1.1539

373.6973,
377.6288, 376.9375

■ 0.7455, 0.5136,
0.0000

■ 0.0000, 0.0000,
0.0000

■ 66.7031, 65.3030,
60.7189

■ 66.7031, 65.3030,
60.7189

■ 60.0187, 55.9025,
46.2558

■ 74.3604, 75.9616,
77.6238

■ 54.2623, 47.7048,
34.1172

■ 83.0223, 87.9134,
97.0723

■ 49.3936, 40.6635,
24.1824

■ 89.0701, 96.9173,
108.6201

■ 45.3669, 34.7258,
16.3179

■ 42.1325, 29.8347,
10.3757

■ 39.6349, 25.9277,
6.1882

■ 37.8109, 22.9356,
3.5581

■ 36.5802, 20.7772,
2.2145

■ 36.3938, 20.4447,
2.0280

Harmonies

Analogous

The Analogous color harmony consists of three colors that are next to each other on the color wheel.



68.0798, 65.3030, 68.1526



66.7031, 65.3030, 60.7189



64.0987, 65.3030, 56.3178

Triad

The Triadic color harmony groups three colors that are evenly spaced from another and form a triangle on the color wheel.



66.7031, 65.3030, 60.7189



56.6646, 65.3030, 65.5056



63.1195, 65.3030, 89.1315

Complementary

The Complementary color scheme is a pair of colors which are on the opposite of each other on the color wheel.



66.7031, 65.3030, 60.7189



65.9572, 73.8121, 91.6603

Split Complementary

Split-complementary colors differ from the complementary color scheme. The scheme consists of three colors, the original color and two neighbors of the complement color.



60.0817, 65.3030, 88.2748



66.7031, 65.3030, 60.7189



56.4220, 65.3030, 74.1391

Square

The Square scheme is like the rectangle color scheme, but the four colors are evenly spaced on the color wheel.



66.7031, 65.3030, 60.7189



58.3278, 65.3030, 58.9191



57.6538, 65.3030, 82.6102



65.9659, 65.3030, 84.8624

Rectangle

The Rectangle color scheme consists of four colors that form a rectangle on the color wheel.



66.7031, 65.3030, 60.7189



62.0512, 65.3030, 55.4615



57.6538, 65.3030, 82.6102



62.0859, 65.3030, 89.4413

Sweetspot

The Sweet Spot groups the original color and five complimentary colors.



66.7049, 65.3059, 60.7203



89.9328, 92.9422, 97.4011



68.9745, 62.8877, 82.9258



19.1005, 19.6878, 20.5150



0.0000, 0.0000, 0.0000



20.3446, 21.4041, 23.3091

Same Dimension

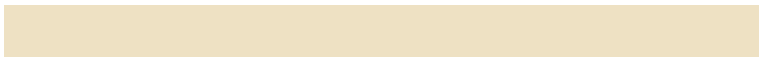
The Same Dimension uses a secret algorithm to generate beautiful new colors.



66.7049, 65.3059, 60.7203



74.7440, 71.7925, 63.8899



72.0632, 76.0225, 62.5064



16.0410, 16.2951, 16.4495



20.3790, 11.5560, 1.1564



1.7649, 1.1005, 0.1194

Inverse Universe

The Inverse Universe completely reimagines the original color for something new.



65.9572, 73.8121, 91.6603



73.7029, 83.6008, 106.8598



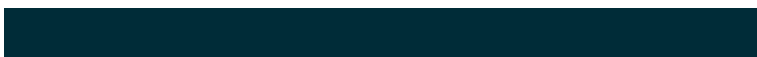
60.4706, 62.8390, 89.8315



15.9500, 17.3341, 20.2268



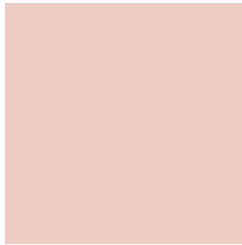
18.7587, 23.7417, 48.7218



1.6301, 2.1142, 4.0764

Previews

White Background



This preview shows how the XYZ color 66.7031, 65.3030, 60.7189 looks on a white background.

Color Contrast Check

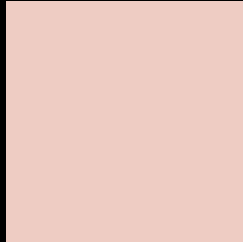
Large Text (above 18pt) WCAG AA × Fail

Any Text WCAG AA × Fail

Large Text (above 18pt) WCAG AAA × Fail

Any Text WCAG AAA × Fail

Black Background



This preview shows how the XYZ color 66.7031, 65.3030, 60.7189 looks on a black background.

Color Contrast Check

Large Text (above 18pt) WCAG AA ✓ Pass

Any Text WCAG AA ✓ Pass

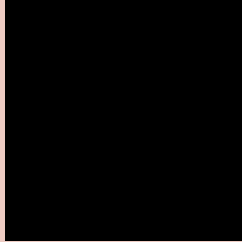
Large Text (above 18pt) WCAG AAA ✓ Pass

Any Text WCAG AAA ✓ Pass

If you want to check with other color combinations, try the [Color Contrast Checker](#).

XYZ 66.7031, 65.3030, 60.7189

Background



This preview shows how black text looks on a background with the XYZ color 66.7031, 65.3030, 60.7189.



This preview shows how white text looks on a background with the XYZ color 66.7031, 65.3030,

Color Blindness Simulation

Color vision deficiency is a very complex topic, and I could not describe the different causes any better than Wikipedia does, so if you want to learn more, you should check out their [article about color blindness](#).

Dichromacy



Original Color

66.7031, 65.3030, 60.7189

Protanopia

62.5165, 65.6175, 63.4033

Deuteranopia

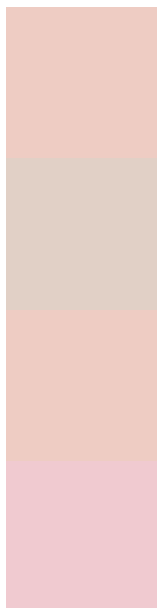
66.7031, 65.3030, 60.7189



Tritanopia

69.5569, 65.4319, 73.9293

Trichromacy



Original Color

66.7031, 65.3030, 60.7189

Protanomaly

63.8003, 65.1965, 62.6476

Deuteranomaly

66.7031, 65.3030, 60.7189

Tritanomaly

68.4409, 65.3204, 68.6754

Monochromacy



Original Color

66.7031, 65.3030, 60.7189

Achromatopsia

63.2451, 66.5387, 72.4607

Achromatomaly

64.3114, 66.0790, 67.7575

CSS Examples

Text

The CSS property to change the color of the text to XYZ 66.7031, 65.3030, 60.7189 is called "color". The color property can be set on classes, ids or directly on the HTML element.

This example shows how text in the color rgb(238, 204, 195) looks like.

```
.text, #text, p{  
    color:rgb(238, 204, 195)  
}
```

If you want to add a text shadow in that color use the text-shadow property, you can generate a text shadow directly with our [CSS Text Shadow Generator](#).

Here you see how black text with a 4 pixel rgb(238, 204, 195) colored shadow looks like.

```
.shadow{ text-shadow: 4px 4px 2px rgb(238, 204, 195) }
```

Border

The CSS property to change the border of an element to XYZ 66.7031, 65.3030, 60.7189 is called "border". The border property can be set on classes, ids or directly on the HTML element.

This example shows the color as border, it can be applied via the CSS property "border" or "border-color".

```
.border, #border, table{ border:4px solid rgb(238, 204, 195) }
```


If only the border color should be changed use the property `border-color`.

```
.border{ border-color:rgb(238, 204, 195) }
```

If you want to add a box shadow in that color use:

Here you see how a box with a 4 pixel `rgb(238, 204, 195)` colored shadow looks like.

```
.boxshadow{ -moz-box-shadow:4px 4px 4px  
4px rgb(238, 204, 195); -webkit-box-  
shadow:4px 4px 4px 4px rgb(238, 204, 195);  
box-shadow:4px 4px 4px 4px rgb(238, 204,  
195) }
```

Background

The CSS property to change the background color of an element to XYZ 66.7031, 65.3030, 60.7189 is called "background". The background property can be set on classes, ids or directly on the HTML element.

```
.background, #background, body{  
background: rgb(238, 204, 195) }
```

If only the background color should be changed can be used:

```
.background{ background-color: rgb(238,  
204, 195) }
```

This example shows the color as background, it is applied via the CSS property "background".

To optimize and compress your CSS code, you can use our [online CSS compressor and optimizer](#) based on csstidy. If you want to create a linear or radial gradient as background or border, check our [CSS Gradient Generator](#).

Hey! You found this booklet interesting? Support Converting Colors with the new Membership Option!

The pro membership hides all ads, plus gives you double the colors in the color bucket, and more awesome pro features!

[Learn more, Memberships starting at \\$2.50/m!](#)

**Follow me
on Twitter!**

@ConvertingColor