

Converting Colors

XYZ(66.7115, 64.8131, 66.6976)

Have a look what the booklet for
XYZ(66.7115, 64.8131, 66.6976)
contains.

XYZ(66.6363, 64.7818, 66.7496)	3
<i>Conversions</i>	4
<i>Details</i>	6
<i>Harmonies</i>	12
<i>Previews</i>	24
<i>Color Blindness Simulation</i>	28
<i>CSS Examples</i>	31

Color

**XYZ(66.6363, 64.7818,
66.7496)**

Conversions

Conversions Part 1

Format	Color
Hex	EBCBCD
RGB	235, 203, 205
RGB Percent	92%, 80%, 80%
CMY	0.0784, 0.2039, 0.1961
CMYK	0.00, 0.14, 0.13, 0.08
HSL	356°, 44%, 86%
HSV	356°, 14%, 92%
XYZ	66.6363, 64.7818, 66.7496
YIQ	212.7960, 18.4300, 7.4060

Conversions

Conversions Part 2

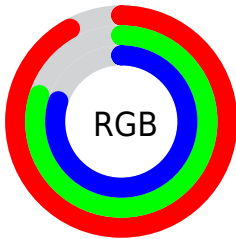
Format	Color
R_{YB}	235, 203, 205
Decimal	15453133
CIE _{Lab}	84.37, 11.55, 3.15
CIE _{LCh}	84, 11.970, 15.276
Yxy	64.7818, 0.3363, 0.3269
Android (android.graphics.Color)	4293643213 (0xFFEBCBCD)
YUV	212.7960, -3.8434, 19.4729
Hunter-Lab	80.4871, 6.9299, 7.1706

Details

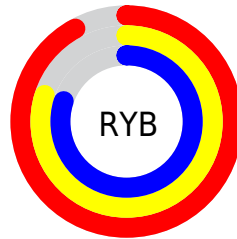
The XYZ color **66.6363, 64.7818, 66.7496** is a light color, and the websafe version is hex **FFCCCC**. A complement of this color would be **69.0474, 77.9979, 88.5105**, and the grayscale version is **63.1273, 66.4148, 72.3257**.

A 20% lighter version of the original color is **95.0500, 100.0000, 108.9000**, and **34.9238, 33.3130, 33.8675** is the 20% darker color. If you saturate the color by 10%, you get **59.0267, 53.5231, 52.0018**, and if you desaturate by 10%, it is **75.4654, 77.8785, 83.7534**.

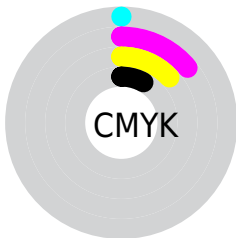
Distribution



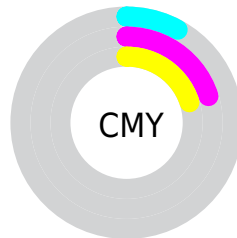
- Red (92%)
- Green (80%)
- Blue (80%)



- Red (92%)
- Yellow (80%)
- Blue (80%)



- Cyan (0%)
- Magenta (14%)
- Yellow (13%)
- Black (8%)



- Cyan (8%)
- Magenta (20%)
- Yellow (20%)

Brightness & Saturation Gradients

These gradients show how the XYZ color 66.6363, 64.7818, 66.7496 changes by changing the brightness by 10 percent. The first figure shows a shift by +10% for each color and the second figure -10%.

Similar to the brightness gradients but the following saturation gradients show a change of the XYZ color 66.6363, 64.7818, 66.7496 by changing the saturation by 10% instead.

66.6363, 64.7818,
66.7496

66.6363, 64.7818,
66.7496

438.1019,
442.0074, 467.5302

49.0587, 47.2842,
48.4208

113.4518,
111.7361, 116.1988

34.8808, 33.2604,
33.7979

143.4204,
141.9616, 148.1563

23.7371, 22.3260,
22.4623

178.2501,
177.1984, 185.4938

15.2624, 14.0966,
13.9954

218.3062,
217.8310, 228.6298

9.0913, 8.1879,
7.9788

263.9541,
264.2439, 277.9829

4.8584, 4.2154,
3.9938

315.5591,

2.1983, 1.7948,

316.8213, 333.9717

1.6219

373.4866,
375.9477, 397.0146

■ 0.7418, 0.4839,
0.3064

■ 0.0000, 0.0000,
0.0000

■ 66.6363, 64.7818,
66.7496

■ 66.6363, 64.7818,
66.7496

■ 59.0267, 53.5231,
52.0018

■ 75.4654, 77.8785,
83.7534

■ 52.5777, 44.0119,
39.4112

■ 85.5584, 92.8810,
103.0981

■ 47.2340, 36.1634,
28.8780

■ 88.0712, 96.4023,
108.5734

■ 42.9334, 29.8819,
20.2928

■ 39.6075, 25.0623,
13.5360

■ 37.1800, 21.5865,
8.4749

■ 35.5629, 19.3180,
4.9589

■ 34.6505, 18.0915,
2.8105

■ 34.3450, 17.6958,
2.0447

Harmonies

Analogous

The Analogous color harmony consists of three colors that are next to each other on the color wheel.



66.6498, 64.7818, 74.3223



66.6363, 64.7818, 66.7496



65.2402, 64.7818, 60.6391

Triad

The Triadic color harmony groups three colors that are evenly spaced from another and form a triangle on the color wheel.



66.6363, 64.7818, 66.7496



58.0127, 64.7818, 60.7294



60.2833, 64.7818, 85.6614

Complementary

The Complementary color scheme is a pair of colors which are on the opposite of each other on the color wheel.



66.6363, 64.7818, 66.7496



69.0474, 77.9979, 88.5105

Split Complementary

Split-complementary colors differ from the complementary color scheme. The scheme consists of three colors, the original color and two neighbors of the complement color.



58.0462, 64.7818, 81.4559



66.6363, 64.7818, 66.7496



56.7611, 64.7818, 66.8812

Square

The Square scheme is like the rectangle color scheme, but the four colors are evenly spaced on the color wheel.



66.6363, 64.7818, 66.7496



60.2363, 64.7818, 57.3374



56.7732, 64.7818, 74.4637



62.9296, 64.7818, 85.6198

Rectangle

The Rectangle color scheme consists of four colors that form a rectangle on the color wheel.



66.6363, 64.7818, 66.7496



63.7356, 64.7818, 58.0585



56.7732, 64.7818, 74.4637



59.4602, 64.7818, 84.6850

Sweetspot

The Sweet Spot groups the original color and five complimentary colors.



66.6381, 64.7847, 66.7510



90.3801, 93.0631, 99.9352



69.9139, 66.0141, 87.6550



19.1630, 19.6490, 21.0403



0.0000, 0.0000, 0.0000



20.3446, 21.4041, 23.3091

Same Dimension

The Same Dimension uses a secret algorithm to generate beautiful new colors.



66.6381, 64.7847, 66.7510



77.8284, 74.4509, 75.7403



69.8208, 71.5332, 66.6308



15.1036, 15.0693, 15.8307



19.1299, 9.8546, 1.2195



1.5156, 0.7792, 0.1664

Inverse Universe

The Inverse Universe completely reimagines the original color for something new.



66.6381, 64.7847, 66.7510



77.8284, 74.4509, 75.7403



65.5181, 70.4804, 88.7488



15.1036, 15.0693, 15.8307



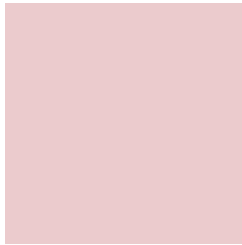
19.1299, 9.8546, 1.2195



1.5156, 0.7792, 0.1664

Previews

White Background



This preview shows how the XYZ color 66.6363, 64.7818, 66.7496 looks on a white background.

Color Contrast Check

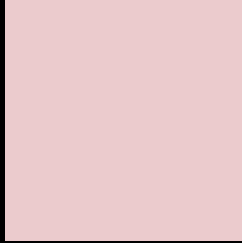
Large Text (above 18pt) WCAG AA × Fail

Any Text WCAG AA × Fail

Large Text (above 18pt) WCAG AAA × Fail

Any Text WCAG AAA × Fail

Black Background



This preview shows how the XYZ color 66.6363, 64.7818, 66.7496 looks on a black background.

Color Contrast Check

Large Text (above 18pt) WCAG AA ✓ Pass

Any Text WCAG AA ✓ Pass

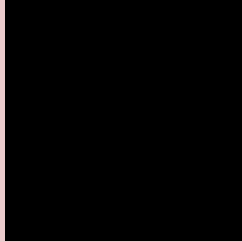
Large Text (above 18pt) WCAG AAA ✓ Pass

Any Text WCAG AAA ✓ Pass

If you want to check with other color combinations, try the [Color Contrast Checker](#).

XYZ 66.6363, 64.7818, 66.7496

Background



This preview shows how black text looks on a background with the XYZ color 66.6363, 64.7818, 66.7496.



This preview shows how white text looks on a background with the XYZ color 66.6363, 64.7818,

66.7496.

Color Blindness Simulation

Color vision deficiency is a very complex topic, and I could not describe the different causes any better than Wikipedia does, so if you want to learn more, you should check out their [article about color blindness](#).

Dichromacy



Original Color

66.6363, 64.7818, 66.7496

Protanopia

62.5795, 65.1437, 69.5973

Deuteranopia

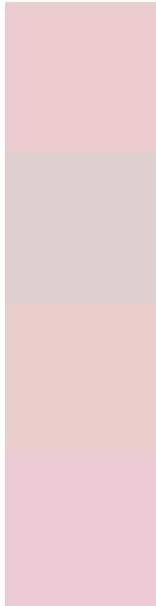
66.2166, 64.9171, 66.7979



Tritanopia

68.3361, 64.7876, 74.5492

Trichromacy



Original Color

66.6363, 64.7818, 66.7496

Protanomaly

63.8222, 64.7093, 68.8009

Deuteranomaly

66.5440, 65.0859, 66.8132

Tritanomaly

67.7228, 64.8780, 71.9041

Monochromacy



Original Color

66.6363, 64.7818, 66.7496

Achromatopsia

63.2451, 66.5387, 72.4607

Achromatomaly

64.2521, 65.6262, 70.2534

CSS Examples

Text

The CSS property to change the color of the text to XYZ 66.6363, 64.7818, 66.7496 is called "color". The color property can be set on classes, ids or directly on the HTML element.

This example shows how text in the color `rgb(235, 203, 205)` looks like.

```
.text, #text, p{  
    color:rgb(235, 203, 205)  
}
```

If you want to add a text shadow in that color use the text-shadow property, you can generate a text shadow directly with our [CSS Text Shadow Generator](#).

Here you see how black text with a 4 pixel rgb(235, 203, 205) colored shadow looks like.

```
.shadow{ text-shadow: 4px 4px 2px rgb(235, 203, 205) }
```

Border

The CSS property to change the border of an element to XYZ 66.6363, 64.7818, 66.7496 is called "border". The border property can be set on classes, ids or directly on the HTML element.

This example shows the color as border, it can be applied via the CSS property "border" or "border-color".

```
.border, #border, table{ border:4px solid rgb(235, 203, 205) }
```


If only the border color should be changed use the property border-color.

```
.border{ border-color:rgb(235, 203, 205) }
```

If you want to add a box shadow in that color use:

Here you see how a box with a 4 pixel rgb(235, 203, 205) colored shadow looks like.

```
.boxshadow{ -moz-box-shadow:4px 4px 4px  
4px rgb(235, 203, 205); -webkit-box-  
shadow:4px 4px 4px 4px rgb(235, 203, 205);  
box-shadow:4px 4px 4px 4px rgb(235, 203,  
205) }
```

Background

The CSS property to change the background color of an element to XYZ 66.6363, 64.7818, 66.7496 is called "background". The background property can be set on classes, ids or directly on the HTML element.

```
.background, #background, body{  
background: rgb(235, 203, 205) }
```

If only the background color should be changed can be used:

```
.background{ background-color: rgb(235,  
203, 205) }
```

This example shows the color as background, it is applied via the CSS property "background".

To optimize and compress your CSS code, you can use our [online CSS compressor and optimizer](#) based on csstidy. If you want to create a linear or radial gradient as background or border, check our [CSS Gradient Generator](#).

Hey! You found this booklet interesting? Support Converting Colors with the new Membership Option!

The pro membership hides all ads, plus gives you double the colors in the color bucket, and more awesome pro features!

[Learn more, Memberships starting at \\$2.50/m!](#)

**Follow me
on Twitter!**

@ConvertingColor