

Converting Colors

XYZ(66.7449, 67.3053, 69.1479)

Have a look what the booklet for
XYZ(66.7449, 67.3053, 69.1479)
contains.

XYZ(66.7449, 67.3053, 69.1479)	3
<i>Conversions</i>	4
<i>Details</i>	6
<i>Harmonies</i>	12
<i>Previews</i>	24
<i>Color Blindness Simulation</i>	28
<i>CSS Examples</i>	31

Color

**XYZ(66.7449, 67.3053,
69.1479)**

Conversions

Conversions Part 1

Format	Color
Hex	E5D2D0
RGB	229, 210, 208
RGB Percent	90%, 82%, 82%
CMY	0.1020, 0.1764, 0.1843
CMYK	0.00, 0.08, 0.09, 0.10
HSL	6°, 29%, 86%
HSV	6°, 9%, 90%
XYZ	66.7449, 67.3053, 69.1479
YIQ	215.4530, 11.9660, 3.4060

Conversions

Conversions Part 2

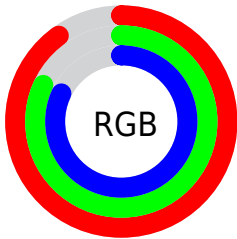
Format	Color
R _Y B	229, 210, 208
Decimal	15061712
CIE Lab	85.66, 6.24, 3.36
CIE LCh	86, 7.090, 28.302
Yxy	67.3053, 0.3285, 0.3312
Android (android.graphics.Color)	4293251792 (0xFFE5D2D0)
YUV	215.4530, -3.6743, 11.8807
Hunter-Lab	82.0398, 1.6521, 7.4548

Details

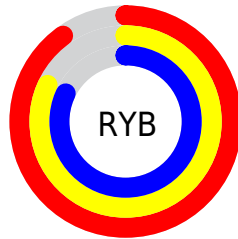
The XYZ color **66.7449, 67.3053, 69.1479** is a light color, and the websafe version is hex **CCCCCC**. A complement of this color would be **67.6242, 74.0039, 84.8496**, and the grayscale version is **64.9184, 68.2993, 74.3779**.

A 20% lighter version of the original color is **95.0500, 100.0000, 108.9000**, and **34.9548, 34.9943, 35.4841** is the 20% darker color. If you saturate the color by 10%, you get **59.3413, 56.6857, 53.7689**, and if you desaturate by 10%, it is **75.2211, 79.4175, 86.8930**.

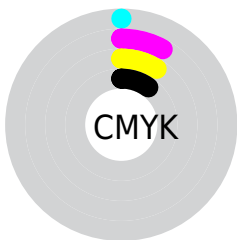
Distribution



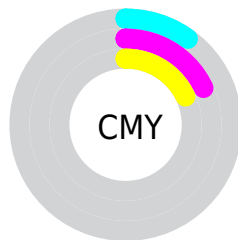
- Red (90%)
- Green (82%)
- Blue (82%)



- Red (90%)
- Yellow (82%)
- Blue (82%)



- Cyan (0%)
- Magenta (8%)
- Yellow (9%)
- Black (10%)



- Cyan (10%)
- Magenta (18%)
- Yellow (18%)

Brightness & Saturation Gradients

These gradients show how the XYZ color 66.7449, 67.3053, 69.1479 changes by changing the brightness by 10 percent. The first figure shows a shift by +10% for each color and the second figure -10%.

Similar to the brightness gradients but the following saturation gradients show a change of the XYZ color 66.7449, 67.3053, 69.1479 by changing the saturation by 10% instead.

66.7449, 67.3053,
69.1479

66.7449, 67.3053,
69.1479

438.4830,
451.0307, 476.2605

49.1473, 49.3328,
50.3597

113.6066,
115.3578, 119.6625

34.9513, 34.8835,
35.3261

143.6014,
146.2065, 152.2259

23.7917, 23.5732,
23.6286

178.4593,
182.1161, 190.2182

15.3031, 15.0173,
14.8487

218.5457,
223.4709, 234.0578

9.1201, 8.8315,
8.5678

264.2259,
270.6554, 284.1633

4.8773, 4.6315,
4.3674

315.8653,

2.2095, 2.0327,

324.0539, 340.9532

1.8290

373.8292,
384.0509, 404.8461

■ 0.7477, 0.6264,
0.4470

■ 0.0000, 0.0000,
0.0000

■ 66.7449, 67.3053,
69.1479

■ 66.7449, 67.3053,
69.1479

■ 59.3413, 56.6857,
53.7689

■ 75.2211, 79.4175,
86.8930

■ 52.9622, 47.4925,
40.6518

■ 84.8043, 93.0677,
107.0938

■ 47.5639, 39.6674,
29.6913

■ 86.1235, 95.3982,
108.4822

■ 43.0976, 33.1452,
20.7717

■ 39.5102, 27.8547,
13.7667

■ 36.7433, 23.7185,
8.5358

■ 34.7312, 20.6500,
4.9193

■ 33.3982, 18.5504,
2.7288

■ 32.6418, 17.2982,
1.6730

Harmonies

Analogous

The Analogous color harmony consists of three colors that are next to each other on the color wheel.



67.1261, 67.3053, 73.5479



66.7449, 67.3053, 69.1479



65.6172, 67.3053, 65.9748

Triad

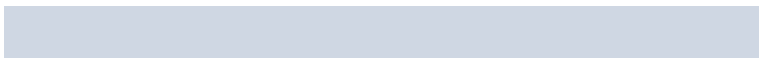
The Triadic color harmony groups three colors that are evenly spaced from another and form a triangle on the color wheel.



66.7449, 67.3053, 69.1479



61.3658, 67.3053, 68.7097



63.8797, 67.3053, 82.5377

Complementary

The Complementary color scheme is a pair of colors which are on the opposite of each other on the color wheel.



66.7449, 67.3053, 69.1479



67.6242, 74.0039, 84.8496

Split Complementary

Split-complementary colors differ from the complementary color scheme. The scheme consists of three colors, the original color and two neighbors of the complement color.



62.3538, 67.3053, 81.1141



66.7449, 67.3053, 69.1479



60.9177, 67.3053, 73.0208

Square

The Square scheme is like the rectangle color scheme, but the four colors are evenly spaced on the color wheel.



66.7449, 67.3053, 69.1479



62.5107, 67.3053, 65.7294



61.2763, 67.3053, 77.5819



65.4553, 67.3053, 81.3965

Rectangle

The Rectangle color scheme consists of four colors that form a rectangle on the color wheel.



66.7449, 67.3053, 69.1479



64.6034, 67.3053, 64.9158



61.2763, 67.3053, 77.5819



63.3441, 67.3053, 82.3422

Sweetspot

The Sweet Spot groups the original color and five complimentary colors.



66.7468, 67.3083, 69.1493



91.6746, 95.1811, 101.8191



68.7695, 67.3306, 82.2265



19.4337, 20.1034, 21.3986



0.0000, 0.0000, 0.0000



20.3446, 21.4041, 23.3091

Same Dimension

The Same Dimension uses a secret algorithm to generate beautiful new colors.



66.7468, 67.3083, 69.1493



83.2913, 83.1894, 84.3041



69.3580, 72.5308, 70.0198



14.4871, 14.5880, 14.9567



18.6760, 9.9262, 0.9316



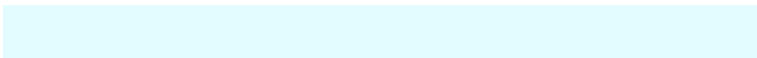
1.4181, 0.8095, 0.0815

Inverse Universe

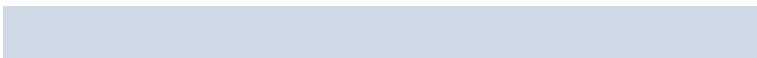
The Inverse Universe completely reimagines the original color for something new.



67.6242, 74.0039, 84.8496



84.6248, 93.3667, 108.1691



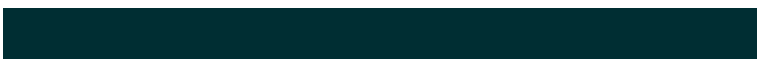
64.9047, 68.5649, 83.9431



14.6837, 16.0888, 18.4759



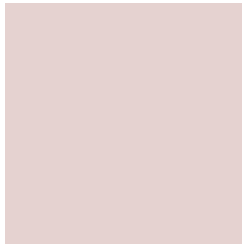
20.9126, 28.8872, 46.8568



1.5797, 2.2034, 3.4740

Previews

White Background



This preview shows how the XYZ color 66.7449, 67.3053, 69.1479 looks on a white background.

Color Contrast Check

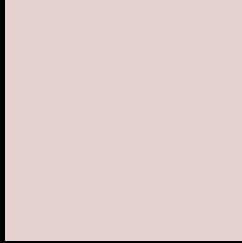
Large Text (above 18pt) WCAG AA × Fail

Any Text WCAG AA × Fail

Large Text (above 18pt) WCAG AAA × Fail

Any Text WCAG AAA × Fail

Black Background



This preview shows how the XYZ color 66.7449, 67.3053, 69.1479 looks on a black background.

Color Contrast Check

Large Text (above 18pt) WCAG AA ✓ Pass

Any Text WCAG AA ✓ Pass

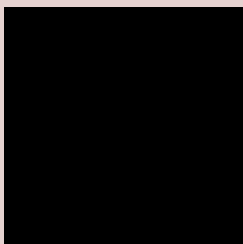
Large Text (above 18pt) WCAG AAA ✓ Pass

Any Text WCAG AAA ✓ Pass

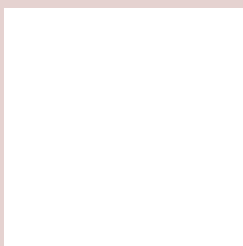
If you want to check with other color combinations, try the [Color Contrast Checker](#).

XYZ 66.7449, 67.3053, 69.1479

Background



This preview shows how black text looks on a background with the XYZ color 66.7449, 67.3053, 69.1479.



This preview shows how white text looks on a background with the XYZ color 66.7449, 67.3053,

Color Blindness Simulation

Color vision deficiency is a very complex topic, and I could not describe the different causes any better than Wikipedia does, so if you want to learn more, you should check out their [article about color blindness](#).

Dichromacy



Original Color

66.7449, 67.3053, 69.1479

Protanopia

64.6405, 67.3017, 70.5564

Deuteranopia

68.7465, 67.2336, 69.6757



Tritanopia

68.9654, 67.4825, 79.9116

Trichromacy



Original Color

66.7449, 67.3053, 69.1479

Protanomaly

65.4835, 67.3784, 69.8756

Deuteranomaly

67.9962, 67.2076, 69.7102

Tritanomaly

68.0885, 67.4859, 75.7671

Monochromacy



Original Color

66.7449, 67.3053, 69.1479

Achromatopsia

64.5905, 67.9542, 74.0022

Achromatomaly

65.1931, 67.5576, 71.8912

CSS Examples

Text

The CSS property to change the color of the text to XYZ 66.7449, 67.3053, 69.1479 is called "color". The color property can be set on classes, ids or directly on the HTML element.

This example shows how text in the color `rgb(229, 210, 208)` looks like.

```
.text, #text, p{  
    color:rgb(229, 210, 208)  
}
```

If you want to add a text shadow in that color use the text-shadow property, you can generate a text shadow directly with our [CSS Text Shadow Generator](#).

Here you see how black text with a 4 pixel rgb(229, 210, 208) colored shadow looks like.

```
.shadow{ text-shadow: 4px 4px 2px rgb(229, 210, 208) }
```

Border

The CSS property to change the border of an element to XYZ 66.7449, 67.3053, 69.1479 is called "border". The border property can be set on classes, ids or directly on the HTML element.

This example shows the color as border, it can be applied via the CSS property "border" or "border-color".

```
.border, #border, table{ border:4px solid rgb(229, 210, 208) }
```


If only the border color should be changed use the property border-color.

```
.border{ border-color:rgb(229, 210, 208) }
```

If you want to add a box shadow in that color use:

Here you see how a box with a 4 pixel rgb(229, 210, 208) colored shadow looks like.

```
.boxshadow{ -moz-box-shadow:4px 4px 4px  
4px rgb(229, 210, 208); -webkit-box-  
shadow:4px 4px 4px 4px rgb(229, 210, 208);  
box-shadow:4px 4px 4px 4px rgb(229, 210,  
208) }
```

Background

The CSS property to change the background color of an element to XYZ 66.7449, 67.3053, 69.1479 is called "background". The background property can be set on classes, ids or directly on the HTML element.

```
.background, #background, body{  
background: rgb(229, 210, 208) }
```

If only the background color should be changed can be used:

```
.background{ background-color: rgb(229,  
210, 208) }
```

This example shows the color as background, it is applied via the CSS property "background".

To optimize and compress your CSS code, you can use our [online CSS compressor and optimizer](#) based on csstidy. If you want to create a linear or radial gradient as background or border, check our [CSS Gradient Generator](#).

Hey! You found this booklet interesting? Support Converting Colors with the new Membership Option!

The pro membership hides all ads, plus gives you double the colors in the color bucket, and more awesome pro features!

[Learn more, Memberships starting at \\$2.50/m!](#)

**Follow me
on Twitter!**

@ConvertingColor