

# Converting Colors

XYZ(66.7625, 67.2939, 73.4542)

Have a look what the booklet for  
XYZ(66.7625, 67.2939, 73.4542)  
contains.

<b>XYZ(66.6764, 67.1682, 73.7405)</b> .....	3
<b><i>Conversions</i></b> .....	4
<b><i>Details</i></b> .....	6
<b><i>Harmonies</i></b> .....	12
<b><i>Previews</i></b> .....	24
<b><i>Color Blindness Simulation</i></b> .....	28
<b><i>CSS Examples</i></b> .....	31

# Color

**XYZ(66.6764, 67.1682,  
73.7405)**

# Conversions

## Conversions Part 1

Format	Color
Hex	E2D2D7
RGB	226, 210, 215
RGB Percent	89%, 82%, 84%
CMY	0.1137, 0.1765, 0.1569
CMYK	0.00, 0.07, 0.05, 0.11
HSL	341°, 22%, 85%
HSV	341°, 7%, 89%
XYZ	66.6764, 67.1682, 73.7405
YIQ	215.3540, 7.9310, 4.9470

# Conversions

## Conversions Part 2

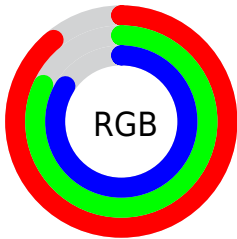
<b>Format</b>	<b>Color</b>
<a href="#">RYB</a>	<a href="#">226, 210, 215</a>
Decimal	<a href="#">14865111</a>
CIELab	<a href="#">85.59, 6.39, -0.48</a>
CIElCh	<a href="#">86, 6.406, 355.683</a>
Yxy	<a href="#">67.1682, 0.3212, 0.3236</a>
Android (android.graphics.Color)	<a href="#">4293055191</a> ( <a href="#">0xFFE2D2D7</a> )
YUV	<a href="#">215.3540, -0.1745, 9.3365</a>
Hunter-Lab	<a href="#">81.9562, 1.7973, 4.0229</a>

# Details

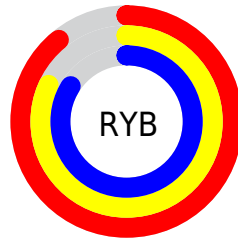
The XYZ color **66.6764, 67.1682, 73.7405** is a light color, and the websafe version is hex **CCCCCC**. A complement of this color would be **66.8284, 73.3167, 79.0396**, and the grayscale version is **64.8302, 68.2064, 74.2767**.

A 20% lighter version of the original color is **95.0500, 100.0000, 108.9000**, and **35.0282, 34.9729, 38.1620** is the 20% darker color. If you saturate the color by 10%, you get **59.5832, 56.0267, 61.9872**, and if you desaturate by 10%, it is **74.7511, 79.9673, 86.7586**.

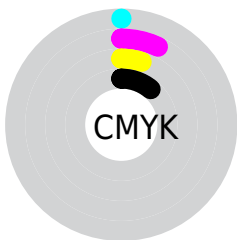
# Distribution



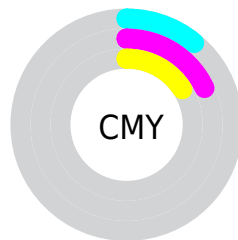
- Red (89%)
- Green (82%)
- Blue (84%)



- Red (89%)
- Yellow (82%)
- Blue (84%)



- Cyan (0%)
- Magenta (7%)
- Yellow (5%)
- Black (11%)



- Cyan (11%)
- Magenta (18%)
- Yellow (16%)

# Brightness & Saturation Gradients

These gradients show how the XYZ color 66.6764, 67.1682, 73.7405 changes by changing the brightness by 10 percent. The first figure shows a shift by +10% for each color and the second figure -10%.

Similar to the brightness gradients but the following saturation gradients show a change of the XYZ color 66.6764, 67.1682, 73.7405 by changing the saturation by 10% instead.



66.6764, 67.1682,  
73.7405

66.6764, 67.1682,  
73.7405

438.2426,  
450.5432, 492.7167

49.0914, 49.2213,  
54.0862

113.5090,  
115.1614, 126.2585

34.9068, 34.7951,  
38.2769

143.4873,  
145.9765, 159.9593

23.7573, 23.5051,  
25.8942

178.3274,  
181.8498, 199.1793

15.2774, 14.9669,  
16.5194

218.3947,  
223.1657, 244.3371

9.1019, 8.7962,  
9.7341

264.0545,  
270.3086, 295.8512

4.8654, 4.6085,  
5.1198

315.6722,

2.2024, 2.0194,

323.6629, 354.1401

2.2577

373.6131,  
383.6130, 419.6224

■ 0.7440, 0.6187,  
0.7074

■ 0.0000, 0.0000,  
0.0000

■ 66.6764, 67.1682,  
73.7405

■ 66.6764, 67.1682,  
73.7405

■ 59.5832, 56.0267,  
61.9872

■ 74.7511, 79.9673,  
86.7586

■ 53.4277, 46.4662,  
51.4557

■ 83.7719, 94.3480,  
101.0521

■ 48.1711, 38.4172,  
42.1068

■ 85.1745, 94.9090,  
108.4378

■ 43.7698, 31.8015,  
33.8975

■ 40.1762, 26.5338,  
26.7820

■ 37.3380, 22.5198,  
20.7112

■ 35.1963, 19.6526,  
15.6319

■ 33.6830, 17.8074,  
11.4852

■ 32.7106, 16.8221,  
8.2029

# Harmonies

## Analogous

The Analogous color harmony consists of three colors that are next to each other on the color wheel.



66.1837, 67.1682, 77.7529



66.6764, 67.1682, 73.7405



66.4000, 67.1682, 69.7117

# Triad

The Triadic color harmony groups three colors that are evenly spaced from another and form a triangle on the color wheel.



66.6764, 67.1682, 73.7405



62.6347, 67.1682, 66.1385



62.2746, 67.1682, 79.9649

# Complementary

The Complementary color scheme is a pair of colors which are on the opposite of each other on the color wheel.



66.6764, 67.1682, 73.7405



66.8284, 73.3167, 79.0396

# Split Complementary

Split-complementary colors differ from the complementary color scheme. The scheme consists of three colors, the original color and two neighbors of the complement color.



61.3493, 67.1682, 76.6680



66.6764, 67.1682, 73.7405



61.5549, 67.1682, 68.7032

# Square

The Square scheme is like the rectangle color scheme, but the four colors are evenly spaced on the color wheel.



66.6764, 67.1682, 73.7405



64.0525, 67.1682, 65.4210



61.0878, 67.1682, 72.5323



63.6307, 67.1682, 81.4322



# Rectangle

The Rectangle color scheme consists of four colors that form a rectangle on the color wheel.



66.6764, 67.1682, 73.7405



65.8190, 67.1682, 67.5421



61.0878, 67.1682, 72.5323



61.9037, 67.1682, 79.0279

# Sweetspot

The Sweet Spot groups the original color and five complimentary colors.



66.6783, 67.1711, 73.7419



92.8850, 96.5652, 105.4181



66.5749, 66.9489, 81.3661



19.9039, 20.7049, 22.6004



0.0000, 0.0000, 0.0000



20.3446, 21.4041, 23.3091



# Same Dimension

The Same Dimension uses a secret algorithm to generate beautiful new colors.



66.6783, 67.1711, 73.7419



86.7069, 86.7970, 95.3805



66.7766, 68.3796, 70.6553



13.8827, 13.7707, 15.1524



18.5817, 9.4997, 4.4631



1.3274, 0.6742, 0.5171



# Inverse Universe

The Inverse Universe completely reimagines the original color for something new.



66.6783, 67.1711, 73.7419



86.7069, 86.7970, 95.3805



66.7136, 72.0056, 82.3349



13.8827, 13.7707, 15.1524



18.5817, 9.4997, 4.4631

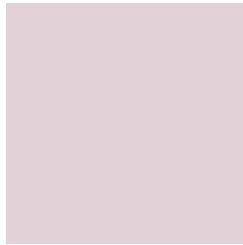


1.3274, 0.6742, 0.5171



# Previews

## White Background



This preview shows how the XYZ color 66.6764, 67.1682, 73.7405 looks on a white background.

## Color Contrast Check

Large Text (above 18pt) WCAG AA × Fail

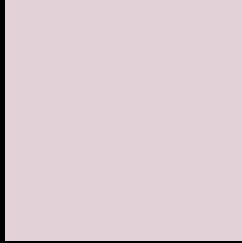
Any Text WCAG AA × Fail

Large Text (above 18pt) WCAG AAA × Fail

Any Text WCAG AAA × Fail



# Black Background



This preview shows how the XYZ color 66.6764, 67.1682, 73.7405 looks on a black background.

## Color Contrast Check

Large Text (above 18pt) WCAG AA ✓ Pass

Any Text WCAG AA ✓ Pass

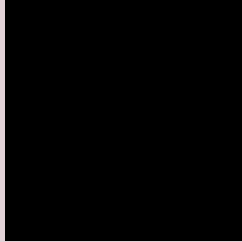
Large Text (above 18pt) WCAG AAA ✓ Pass

Any Text WCAG AAA ✓ Pass

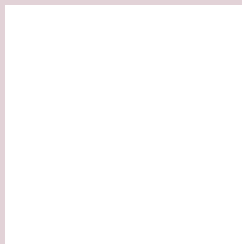
If you want to check with other color combinations, try the [Color Contrast Checker](#).

# XYZ 66.6764, 67.1682, 73.7405

## Background



This preview shows how black text looks on a background with the XYZ color 66.6764, 67.1682, 73.7405.



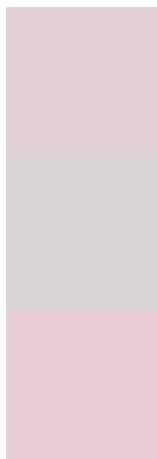
This preview shows how white text looks on a background with the XYZ color 66.6764, 67.1682,



# Color Blindness Simulation

Color vision deficiency is a very complex topic, and I could not describe the different causes any better than Wikipedia does, so if you want to learn more, you should check out their [article about color blindness](#).

## Dichromacy



### Original Color

66.6764, 67.1682, 73.7405

### Protanopia

64.9339, 67.3500, 75.2231

### Deuteranopia

68.6392, 67.0759, 74.2950



## Tritanopia

67.8250, 66.8789, 80.5683

# Trichromacy



## Original Color

66.6764, 67.1682, 73.7405

## Protanomaly

65.4534, 67.2605, 74.4986

## Deuteranomaly

67.9055, 67.0585, 74.3303

## Tritanomaly

67.5302, 67.1523, 77.8091

# Monochromacy



## Original Color

66.6764, 67.1682, 73.7405

## Achromatopsia

64.5905, 67.9542, 74.0022

## Achromatomaly

65.2734, 67.5549, 73.8891

# CSS Examples

## Text

The CSS property to change the color of the text to XYZ 66.6764, 67.1682, 73.7405 is called "color". The color property can be set on classes, ids or directly on the HTML element.

This example shows how text in the color rgb(226, 210, 215) looks like.

```
.text, #text, p{  
    color:rgb(226, 210, 215)  
}
```

If you want to add a text shadow in that color use the text-shadow property, you can generate a text shadow directly with our [CSS Text Shadow Generator](#).

Here you see how black text with a 4 pixel rgb(226, 210, 215) colored shadow looks like.

```
.shadow{ text-shadow: 4px 4px 2px rgb(226, 210, 215) }
```

## Border

The CSS property to change the border of an element to XYZ 66.6764, 67.1682, 73.7405 is called "border". The border property can be set on classes, ids or directly on the HTML element.

This example shows the color as border, it can be applied via the CSS property "border" or "border-color".

```
.border, #border, table{ border:4px solid rgb(226, 210, 215) }
```



If only the border color should be changed use the property `border-color`.

```
.border{ border-color:rgb(226, 210, 215) }
```

If you want to add a box shadow in that color use:

Here you see how a box with a 4 pixel `rgb(226, 210, 215)` colored shadow looks like.

```
.boxshadow{ -moz-box-shadow:4px 4px 4px 4px rgb(226, 210, 215); -webkit-box-shadow:4px 4px 4px 4px rgb(226, 210, 215); box-shadow:4px 4px 4px 4px rgb(226, 210, 215) }
```

# Background

The CSS property to change the background color of an element to XYZ 66.6764, 67.1682, 73.7405 is called "background". The background property can be set on classes, ids or directly on the HTML element.

```
.background, #background, body{  
background: rgb(226, 210, 215) }
```

If only the background color should be changed can be used:

```
.background{ background-color: rgb(226,  
210, 215) }
```

This example shows the color as background, it is applied via the CSS property "background".

To optimize and compress your CSS code, you can use our [online CSS compressor and optimizer](#) based on csstidy. If you want to create a linear or radial gradient as background or border, check our [CSS Gradient Generator](#).

Hey! You found this booklet interesting? Support Converting Colors with the new Membership Option!

The pro membership hides all ads, plus gives you double the colors in the color bucket, and more awesome pro features!

**[Learn more, Memberships starting at \\$2.50/m!](#)**

**Follow me  
on Twitter!**

@ConvertingColor