

# Converting Colors

XYZ(66.8171, 56.9976, 39.1814)

Have a look what the booklet for  
XYZ(66.8171, 56.9976, 39.1814)  
contains.

**XYZ(63.0479, 55.1386, 39.2181) ..... 3**  
***Conversions* ..... 4**  
***Details* ..... 6**  
***Harmonies* ..... 12**  
***Previews* ..... 24**  
***Color Blindness Simulation* ..... 28**  
***CSS Examples* ..... 31**

# Color

**XYZ(63.0479, 55.1386,  
39.2181)**

# Conversions

## Conversions Part 1

Format	Color
Hex	FFB19D
RGB	255, 177, 157
RGB Percent	100%, 69%, 62%
CMY	0.0000, 0.3059, 0.3843
CMYK	0.00, 0.31, 0.38, 0.00
HSL	12°, 100%, 81%
HSV	12°, 38%, 100%
XYZ	63.0479, 55.1386, 39.2181
YIQ	198.0420, 52.9080, 10.3160

# Conversions

## Conversions Part 2

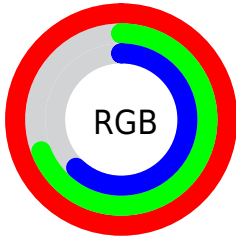
Format	Color
R <sub>Y</sub> B	255, 182, 157
Decimal	16757149
CIE Lab	79.12, 26.06, 21.70
CIE LCh	79, 33.910, 39.790
Yxy	55.1386, 0.4005, 0.3503
Android (android.graphics.Color)	4294947229 (0xFFFFB19D)
YUV	198.0420, -20.2337, 49.9522
Hunter-Lab	74.2554, 21.6118, 20.6646

# Details

The XYZ color **63.0479, 55.1386, 39.2181** is a light color, and the websafe version is hex **FF9999**. A complement of this color would be **61.6616, 73.8017, 105.6028**, and the grayscale version is **53.7999, 56.6017, 61.6392**.

A 20% lighter version of the original color is **82.2626, 84.2913, 74.2215**, and **32.5741, 27.1917, 17.1673** is the 20% darker color. If you saturate the color by 10%, you get **57.3791, 46.9290, 27.6853**, and if you desaturate by 10%, it is **69.7701, 64.7275, 53.3445**.

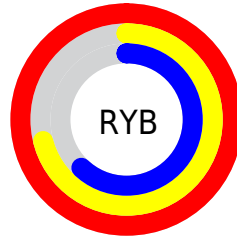
# Distribution



Red (100%)

Green (69%)

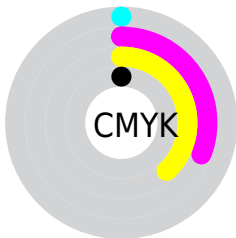
Blue (62%)



Red (100%)

Yellow (71%)

Blue (62%)

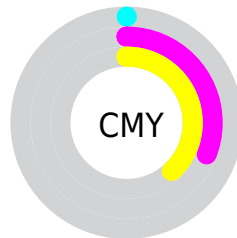


Cyan (0%)

Magenta (31%)

Yellow (38%)

Black (0%)



Cyan (0%)

Magenta (31%)


Yellow (38%)


# Brightness & Saturation Gradients

These gradients show how the XYZ color 63.0479, 55.1386, 39.2181 changes by changing the brightness by 10 percent. The first figure shows a shift by +10% for each color and the second figure -10%.


Similar to the brightness gradients but the following saturation gradients show a change of the XYZ color 63.0479, 55.1386, 39.2181 by changing the saturation by 10% instead.





 63.0479, 55.1386,  
39.2181


 63.0479, 55.1386,  
39.2181


425.4002,  
406.4371, 358.2705

 46.1388, 39.5127,  
26.6203

 108.3200, 97.7440,  
75.1954

 32.5604, 27.1588,  
17.0584


 137.4137,  
125.4923, 99.4120

 21.9475, 17.6925,  
10.1137


171.2997,  
158.0502, 128.3385

 13.9347, 10.7295,  
5.3678

210.3432,  
195.8020, 162.3937

 8.1567, 5.8852,  
2.4022

254.9096,  
239.1322, 201.9959

 4.2480, 2.7754,  
0.7876

305.3644,

 1.8434, 1.0156,

288.4252, 247.5637

0.0000

362.0728,  
344.0654, 299.5158

■ 0.5436, 0.0000,  
0.0000

■ 0.0000, 0.0000,  
0.0000

■ 63.0479, 55.1386,  
39.2181

■ 63.0479, 55.1386,  
39.2181

■ 57.3791, 46.9290,  
27.6853

■ 69.7701, 64.7275,  
53.3445

■ 52.7046, 40.0268,  
18.5842

■ 77.5919, 75.7474,  
70.2066

■ 48.9661, 34.3658,  
11.7394

■ 86.5622, 88.2569,  
89.9398

■ 46.0968, 29.8704,  
6.9506

95.0499, 100.0000,  
108.9000

■ 44.0204, 26.4561,  
3.9816

■ 42.6395, 24.0240,  
2.5046

■ 42.4704, 23.7209,  
2.3402

# Harmonies

## Analogous

The Analogous color harmony consists of three colors that are next to each other on the color wheel.



66.2945, 55.1386, 53.9245



63.0479, 55.1386, 39.2181



57.0295, 55.1386, 31.4312

# Triad

The Triadic color harmony groups three colors that are evenly spaced from another and form a triangle on the color wheel.



63.0479, 55.1386, 39.2181



41.1274, 55.1386, 48.0681



54.6498, 55.1386, 104.7207

# Complementary

The Complementary color scheme is a pair of colors which are on the opposite of each other on the color wheel.



63.0479, 55.1386, 39.2181



61.6616, 73.8017, 105.6028

# Split Complementary

Split-complementary colors differ from the complementary color scheme. The scheme consists of three colors, the original color and two neighbors of the complement color.



48.0424, 55.1386, 102.2044



63.0479, 55.1386, 39.2181



40.6095, 55.1386, 66.5939

# Square

The Square scheme is like the rectangle color scheme, but the four colors are evenly spaced on the color wheel.



63.0479, 55.1386, 39.2181



44.5185, 55.1386, 35.7264



43.0373, 55.1386, 87.1625



61.1777, 55.1386, 93.4398



# Rectangle

The Rectangle color scheme consists of four colors that form a rectangle on the color wheel.



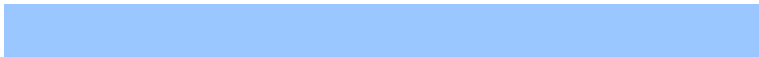
63.0479, 55.1386, 39.2181



52.4554, 55.1386, 29.9653



43.0373, 55.1386, 87.1625



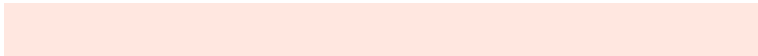
52.3598, 55.1386, 105.5081

# Sweetspot

The Sweet Spot groups the original color and five complimentary colors.



63.0493, 55.1413, 39.2192



83.2260, 83.6178, 82.5591



68.3504, 51.3957, 85.2186



17.5605, 17.5446, 17.1131



0.0000, 0.0000, 0.0000



20.3446, 21.4041, 23.3091



# Same Dimension

The Same Dimension uses a secret algorithm to generate beautiful new colors.



63.0493, 55.1413, 39.2192



58.6637, 48.8022, 30.2589



74.4136, 77.8699, 43.0073



18.3097, 18.5875, 18.7671



22.2757, 12.5626, 1.2508



2.2422, 1.3698, 0.1462



# Inverse Universe

The Inverse Universe completely reimagines the original color for something new.



61.6616, 73.8017, 105.6028



57.0728, 69.7800, 105.0686



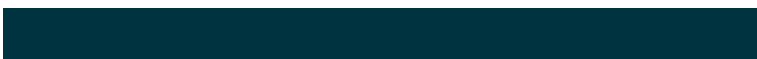
49.5984, 49.6752, 101.5817



18.2215, 19.8145, 23.1142



20.6936, 26.2968, 53.4197



2.0906, 2.7120, 5.2265



# Previews

## White Background



This preview shows how the XYZ color 63.0479, 55.1386, 39.2181 looks on a white background.

## Color Contrast Check

Large Text (above 18pt) WCAG AA × Fail

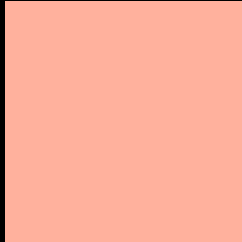
Any Text WCAG AA × Fail

Large Text (above 18pt) WCAG AAA × Fail

Any Text WCAG AAA × Fail



# Black Background



This preview shows how the XYZ color 63.0479, 55.1386, 39.2181 looks on a black background.

## Color Contrast Check

Large Text (above 18pt) WCAG AA ✓ Pass

Any Text WCAG AA ✓ Pass

Large Text (above 18pt) WCAG AAA ✓ Pass

Any Text WCAG AAA ✓ Pass

If you want to check with other color combinations, try the [Color Contrast Checker](#).

**XYZ 63.0479, 55.1386, 39.2181**

## **Background**



This preview shows how black text looks on a background with the XYZ color 63.0479, 55.1386, 39.2181.



This preview shows how white text looks on a background with the XYZ color 63.0479, 55.1386,

39.2181.

# Color Blindness Simulation

Color vision deficiency is a very complex topic, and I could not describe the different causes any better than Wikipedia does, so if you want to learn more, you should check out their [article about color blindness](#).

## Dichromacy



### Original Color

63.0479, 55.1386, 39.2181

### Protanopia

52.3550, 55.4984, 44.0293

### Deuteranopia

56.2127, 54.9910, 38.6619



## Tritanopia

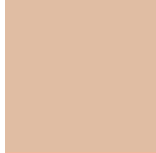
65.2390, 55.0773, 53.6469

# Trichromacy



## Original Color

63.0479, 55.1386, 39.2181



## Protanomaly

55.5489, 54.8868, 42.3168



## Deuteranomaly

58.4011, 54.8584, 38.9632



## Tritanomaly

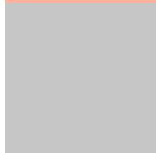
64.3078, 55.0151, 47.7870

# Monochromacy



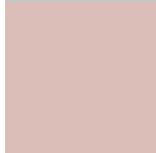
## Original Color

63.0479, 55.1386, 39.2181



## Achromatopsia

53.6758, 56.4712, 61.4971



## Achromatomaly

56.1741, 55.3059, 52.5142

# CSS Examples

## Text

The CSS property to change the color of the text to XYZ 63.0479, 55.1386, 39.2181 is called "color". The color property can be set on classes, ids or directly on the HTML element.

This example shows how text in the color `rgb(255, 177, 157)` looks like.

```
.text, #text, p{  
    color:rgb(255, 177, 157)  
}
```

If you want to add a text shadow in that color use the text-shadow property, you can generate a text shadow directly with our [CSS Text Shadow Generator](#).

Here you see how black text with a 4 pixel rgb(255, 177, 157) colored shadow looks like.

```
.shadow{ text-shadow: 4px 4px 2px rgb(255, 177, 157) }
```

## Border

The CSS property to change the border of an element to XYZ 63.0479, 55.1386, 39.2181 is called "border". The border property can be set on classes, ids or directly on the HTML element.

This example shows the color as border, it can be applied via the CSS property "border" or "border-color".

```
.border, #border, table{ border:4px solid rgb(255, 177, 157) }
```



If only the border color should be changed use the property `border-color`.

```
.border{ border-color:rgb(255, 177, 157) }
```

If you want to add a box shadow in that color use:

Here you see how a box with a 4 pixel `rgb(255, 177, 157)` colored shadow looks like.

```
.boxshadow{ -moz-box-shadow:4px 4px 4px  
4px rgb(255, 177, 157); -webkit-box-  
shadow:4px 4px 4px 4px rgb(255, 177, 157);  
box-shadow:4px 4px 4px 4px rgb(255, 177,  
157) }
```

# Background

The CSS property to change the background color of an element to XYZ 63.0479, 55.1386, 39.2181 is called "background". The background property can be set on classes, ids or directly on the HTML element.

```
.background, #background, body{  
background: rgb(255, 177, 157) }
```

If only the background color should be changed can be used:

```
.background{ background-color: rgb(255,  
177, 157) }
```

This example shows the color as background, it is applied via the CSS property "background".

To optimize and compress your CSS code, you can use our [online CSS compressor and optimizer](#) based on csstidy. If you want to create a linear or radial gradient as background or border, check our [CSS Gradient Generator](#).

Hey! You found this booklet interesting? Support Converting Colors with the new Membership Option!

The pro membership hides all ads, plus gives you double the colors in the color bucket, and more awesome pro features!

**[Learn more, Memberships starting at \\$2.50/m!](#)**

**Follow me  
on Twitter!**

@ConvertingColor