

Converting Colors

XYZ(66.8960, 66.6547, 69.0144)

Have a look what the booklet for
XYZ(66.8960, 66.6547, 69.0144)
contains.

XYZ(66.8960, 66.6547, 69.0144)	3
<i>Conversions</i>	4
<i>Details</i>	6
<i>Harmonies</i>	12
<i>Previews</i>	24
<i>Color Blindness Simulation</i>	28
<i>CSS Examples</i>	31

Color

**XYZ(66.8960, 66.6547,
69.0144)**

Conversions

Conversions Part 1

Format	Color
Hex	E7D0D0
RGB	231, 208, 208
RGB Percent	91%, 82%, 82%
CMY	0.0941, 0.1843, 0.1843
CMYK	0.00, 0.10, 0.10, 0.09
HSL	0°, 32%, 86%
HSV	0°, 10%, 91%
XYZ	66.8960, 66.6547, 69.0144
YIQ	214.8770, 13.7080, 4.8760

Conversions

Conversions Part 2

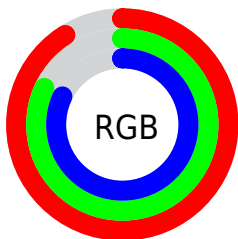
Format	Color
R _Y B	231, 208, 208
Decimal	15192272
CIE Lab	85.33, 7.99, 2.91
CIE LCh	85, 8.506, 19.975
Yxy	66.6547, 0.3302, 0.3291
Android (android.graphics.Color)	4293382352 (0xFFE7D0D0)
YUV	214.8770, -3.3904, 14.1399
Hunter-Lab	81.6423, 3.3851, 7.0302

Details

The XYZ color **66.8960, 66.6547, 69.0144** is a light color, and the websafe version is hex **CCCCCC**. A complement of this color would be **69.0119, 76.3298, 86.6978**, and the grayscale version is **64.5253, 67.8857, 73.9275**.

A 20% lighter version of the original color is **95.0500, 100.0000, 108.9000**, and **35.0675, 34.5583, 35.3940** is the 20% darker color. If you saturate the color by 10%, you get **59.0318, 55.1477, 53.3777**, and if you desaturate by 10%, it is **75.9978, 79.9731, 87.1074**.

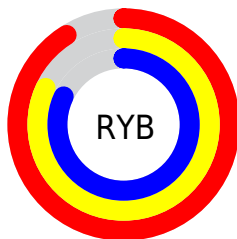
Distribution



Red (91%)

Green (82%)

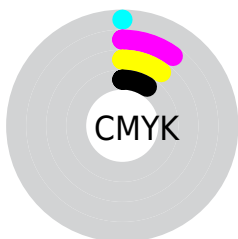
Blue (82%)



Red (91%)

Yellow (82%)

Blue (82%)

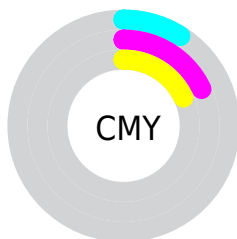


Cyan (0%)

Magenta (10%)

Yellow (10%)

Black (9%)



Cyan (9%)

Magenta (18%)

Yellow (18%)

Brightness & Saturation Gradients

These gradients show how the XYZ color 66.8960, 66.6547, 69.0144 changes by changing the brightness by 10 percent. The first figure shows a shift by +10% for each color and the second figure -10%.

Similar to the brightness gradients but the following saturation gradients show a change of the XYZ color 66.8960, 66.6547, 69.0144 by changing the saturation by 10% instead.

66.8960, 66.6547,
69.0144

66.8960, 66.6547,
69.0144

439.0128,
448.7147, 475.7771

49.2705, 48.8041,
50.2516

113.8220,
114.4255, 119.4700

35.0495, 34.4641,
35.2408

143.8532,
145.1144, 152.0000

23.8677, 23.2503,
23.5634

178.7504,
180.8516, 189.9560

15.3597, 14.7785,
14.8008

218.8788,
222.0214, 233.7567

9.1602, 8.6641,
8.5347

264.6039,
269.0082, 283.8207

4.9038, 4.5227,
4.3463

316.2911,

2.2251, 1.9700,

322.1964, 340.5663

1.8172

374.3056,
381.9705, 404.4123

■ 0.7559, 0.5900,
0.4392

■ 0.0000, 0.0000,
0.0000

■ 66.8960, 66.6547,
69.0144

■ 66.8960, 66.6547,
69.0144

■ 59.0318, 55.1477,
53.3777

■ 75.9978, 79.9731,
87.1074

■ 52.3467, 45.3655,
40.0874

■ 86.3816, 95.1670,
107.7517

■ 46.7854, 37.2278,
29.0316

■ 86.7653, 95.7291,
108.5123

■ 42.2863, 30.6443,
20.0878

■ 38.7818, 25.5161,
13.1215

■ 36.1965, 21.7329,
7.9828

■ 34.4444, 19.1688,
4.5005

■ 33.4231, 17.6740,
2.4710

■ 32.9574, 16.9923,
1.5457

Harmonies

Analogous

The Analogous color harmony consists of three colors that are next to each other on the color wheel.



67.0684, 66.6547, 74.4366



66.8960, 66.6547, 69.0144



65.7636, 66.6547, 64.7572

Triad

The Triadic color harmony groups three colors that are evenly spaced from another and form a triangle on the color wheel.



66.8960, 66.6547, 69.0144



60.5610, 66.6547, 65.9696



62.7111, 66.6547, 83.5225

Complementary

The Complementary color scheme is a pair of colors which are on the opposite of each other on the color wheel.



66.8960, 66.6547, 69.0144



69.0119, 76.3298, 86.6978

Split Complementary

Split-complementary colors differ from the complementary color scheme. The scheme consists of three colors, the original color and two neighbors of the complement color.



61.0026, 66.6547, 80.9993



66.8960, 66.6547, 69.0144



59.7779, 66.6547, 70.7459

Square

The Square scheme is like the rectangle color scheme, but the four colors are evenly spaced on the color wheel.



66.8960, 66.6547, 69.0144



62.0973, 66.6547, 63.0620



59.9379, 66.6547, 76.2573



64.6261, 66.6547, 83.0010

Rectangle

The Rectangle color scheme consists of four colors that form a rectangle on the color wheel.



66.8960, 66.6547, 69.0144



64.6292, 66.6547, 63.0649



59.9379, 66.6547, 76.2573



62.0943, 66.6547, 82.9976

Sweetspot

The Sweet Spot groups the original color and five complimentary colors.



66.8979, 66.6576, 69.0158



91.4509, 94.7336, 101.7446



69.9355, 67.8712, 85.0164



19.3736, 19.9833, 21.3786



0.0000, 0.0000, 0.0000



20.3446, 21.4041, 23.3091

Same Dimension

The Same Dimension uses a secret algorithm to generate beautiful new colors.



66.8979, 66.6576, 69.0158



81.5136, 80.1929, 81.9883



69.8031, 72.4682, 69.9842



14.3773, 14.3684, 14.9201



18.4754, 9.5249, 0.8647



1.3653, 0.7040, 0.0639

Inverse Universe

The Inverse Universe completely reimagines the original color for something new.



69.0119, 76.3298, 86.6978



84.6729, 94.6479, 108.4139



65.8993, 70.1047, 85.6603



14.8073, 16.3360, 18.5171



24.1002, 35.2624, 47.9193



1.7810, 2.6059, 3.5411

Previews

White Background



This preview shows how the XYZ color 66.8960, 66.6547, 69.0144 looks on a white background.

Color Contrast Check

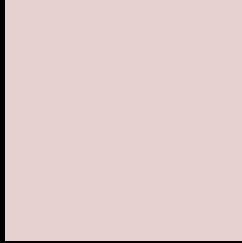
Large Text (above 18pt) WCAG AA × Fail

Any Text WCAG AA × Fail

Large Text (above 18pt) WCAG AAA × Fail

Any Text WCAG AAA × Fail

Black Background



This preview shows how the XYZ color 66.8960, 66.6547, 69.0144 looks on a black background.

Color Contrast Check

Large Text (above 18pt) WCAG AA ✓ Pass

Any Text WCAG AA ✓ Pass

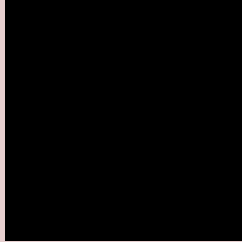
Large Text (above 18pt) WCAG AAA ✓ Pass

Any Text WCAG AAA ✓ Pass

If you want to check with other color combinations, try the [Color Contrast Checker](#).

XYZ 66.8960, 66.6547, 69.0144

Background



This preview shows how black text looks on a background with the XYZ color 66.8960, 66.6547, 69.0144.



This preview shows how white text looks on a background with the XYZ color 66.8960, 66.6547,

69.0144.

Color Blindness Simulation

Color vision deficiency is a very complex topic, and I could not describe the different causes any better than Wikipedia does, so if you want to learn more, you should check out their [article about color blindness](#).

Dichromacy



Original Color

66.8960, 66.6547, 69.0144

Protanopia

64.0898, 66.6455, 70.4587

Deuteranopia

68.0485, 66.5295, 68.9295



Tritanopia

68.8604, 66.7402, 78.3600

Trichromacy



Original Color

66.8960, 66.6547, 69.0144

Protanomaly

65.2343, 66.8800, 69.7925

Deuteranomaly

67.6297, 66.6721, 68.9791

Tritanomaly

68.1159, 66.7912, 74.9475

Monochromacy



Original Color

66.8960, 66.6547, 69.0144

Achromatopsia

64.5905, 67.9542, 74.0022

Achromatomaly

65.2459, 67.2126, 71.8219

CSS Examples

Text

The CSS property to change the color of the text to XYZ 66.8960, 66.6547, 69.0144 is called "color". The color property can be set on classes, ids or directly on the HTML element.

This example shows how text in the color `rgb(231, 208, 208)` looks like.

```
.text, #text, p{  
    color:rgb(231, 208, 208)  
}
```

If you want to add a text shadow in that color use the text-shadow property, you can generate a text shadow directly with our [CSS Text Shadow Generator](#).

Here you see how black text with a 4 pixel rgb(231, 208, 208) colored shadow looks like.

```
.shadow{ text-shadow: 4px 4px 2px rgb(231, 208, 208) }
```

Border

The CSS property to change the border of an element to XYZ 66.8960, 66.6547, 69.0144 is called "border". The border property can be set on classes, ids or directly on the HTML element.

This example shows the color as border, it can be applied via the CSS property "border" or "border-color".

```
.border, #border, table{ border:4px solid rgb(231, 208, 208) }
```


If only the border color should be changed use the property `border-color`.

```
.border{ border-color:rgb(231, 208, 208) }
```

If you want to add a box shadow in that color use:

Here you see how a box with a 4 pixel `rgb(231, 208, 208)` colored shadow looks like.

```
.boxshadow{ -moz-box-shadow:4px 4px 4px  
4px rgb(231, 208, 208); -webkit-box-  
shadow:4px 4px 4px 4px rgb(231, 208, 208);  
box-shadow:4px 4px 4px 4px rgb(231, 208,  
208) }
```

Background

The CSS property to change the background color of an element to XYZ 66.8960, 66.6547, 69.0144 is called "background". The background property can be set on classes, ids or directly on the HTML element.

```
.background, #background, body{  
background: rgb(231, 208, 208) }
```

If only the background color should be changed can be used:

```
.background{ background-color: rgb(231,  
208, 208) }
```

This example shows the color as background, it is applied via the CSS property "background".

To optimize and compress your CSS code, you can use our [online CSS compressor and optimizer](#) based on csstidy. If you want to create a linear or radial gradient as background or border, check our [CSS Gradient Generator](#).

Hey! You found this booklet interesting? Support Converting Colors with the new Membership Option!

The pro membership hides all ads, plus gives you double the colors in the color bucket, and more awesome pro features!

[Learn more, Memberships starting at \\$2.50/m!](#)

**Follow me
on Twitter!**

@ConvertingColor