

Converting Colors

XYZ(66.9005, 67.8283, 57.5469)

Have a look what the booklet for
XYZ(66.9005, 67.8283, 57.5469)
contains.

XYZ(67.0716, 68.0955, 57.7528)	3
<i>Conversions</i>	4
<i>Details</i>	6
<i>Harmonies</i>	12
<i>Previews</i>	24
<i>Color Blindness Simulation</i>	28
<i>CSS Examples</i>	31

Color

**XYZ(67.0716, 68.0955,
57.7528)**

Conversions

Conversions Part 1

Format	Color
Hex	ECD3BD
RGB	236, 211, 189
RGB Percent	93%, 83%, 74%
CMY	0.0745, 0.1725, 0.2588
CMYK	0.00, 0.11, 0.20, 0.07
HSL	28°, 55%, 83%
HSV	28°, 20%, 93%
XYZ	67.0716, 68.0955, 57.7528
YIQ	215.9670, 21.9620, -1.5420

Conversions

Conversions Part 2

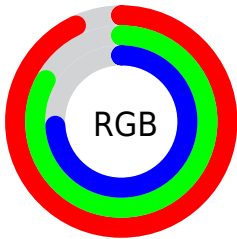
Format	Color
R _Y B	236, 230, 189
Decimal	15520701
CIE Lab	86.05, 5.26, 14.06
CIE LCh	86, 15.011, 69.495
Yxy	68.0955, 0.3477, 0.3530
Android (android.graphics.Color)	4293710781 (0xFFECD3BD)
YUV	215.9670, -13.2947, 17.5689
Hunter-Lab	82.5200, 0.6734, 16.2690

Details

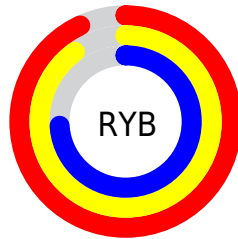
The XYZ color **67.0716, 68.0955, 57.7528** is a light color, and the websafe version is hex **FFCCCC**. A complement of this color would be **60.1727, 64.9664, 88.7256**, and the grayscale version is **65.3265, 68.7286, 74.8454**.

A 20% lighter version of the original color is **93.4814, 99.3726, 100.6400**, and **35.3233, 35.5948, 28.3013** is the 20% darker color. If you saturate the color by 10%, you get **61.7186, 61.1607, 44.3415**, and if you desaturate by 10%, it is **73.0886, 75.6901, 73.4435**.

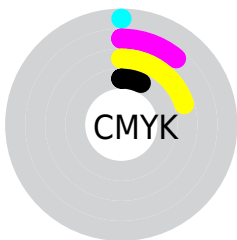
Distribution



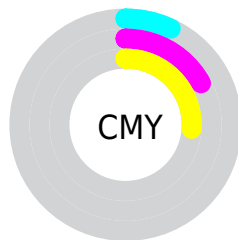
- Red (93%)
- Green (83%)
- Blue (74%)



- Red (93%)
- Yellow (90%)
- Blue (74%)



- Cyan (0%)
- Magenta (11%)
- Yellow (20%)
- Black (7%)





- Cyan (7%)
- Magenta (17%)
- Yellow (26%)

Brightness & Saturation Gradients

These gradients show how the XYZ color 67.0716, 68.0955, 57.7528 changes by changing the brightness by 10 percent. The first figure shows a shift by +10% for each color and the second figure -10%.


Similar to the brightness gradients but the following saturation gradients show a change of the XYZ color 67.0716, 68.0955, 57.7528 by changing the saturation by 10% instead.


 67.0716, 68.0955,
57.7528

 67.0716, 68.0955,
57.7528


439.6281,
453.8343, 433.8367

 49.4137, 49.9754,
41.1966


 114.0722,
116.4888, 103.0740

 35.1637, 35.3939,
28.1518


144.1457,
147.5307, 132.6761

 23.9561, 23.9664,
18.2001


179.0884,
183.6488, 167.4638

 15.4256, 15.3087,
10.9228

219.2657,
225.2273, 207.8558

 9.2069, 9.0363,
5.9014

265.0430,
272.6508, 254.2705

 4.9346, 4.7649,
2.7174

316.7856,

 2.2433, 2.1100,

326.3035, 307.1265

0.9522

374.8588,
386.5699, 366.8424

■ 0.7654, 0.6702,
0.0000

■ 0.0000, 0.0000,
0.0000

■ 67.0716, 68.0955,
57.7528

■ 67.0716, 68.0955,
57.7528

■ 61.7186, 61.1607,
44.3415

■ 73.0886, 75.6901,
73.4435

■ 56.9985, 54.8574,
33.0975

■ 79.7883, 83.9536,
91.5100

■ 52.8856, 49.1686,
23.9055

■ 86.4124, 92.5933,
107.9256

■ 49.3501, 44.0727,
16.6376

■ 88.4022, 96.5729,
108.5889

■ 46.3590, 39.5467,
11.1514

■ 43.8755, 35.5656,
7.2843

■ 41.8566, 32.1012,
4.8434

■ 40.2341, 29.1150,
3.5050

■ 40.2214, 29.0913,
3.4953

Harmonies

Analogous

The Analogous color harmony consists of three colors that are next to each other on the color wheel.



69.9717, 68.0955, 62.7183



67.0716, 68.0955, 57.7528



63.6358, 68.0955, 56.9587

Triad

The Triadic color harmony groups three colors that are evenly spaced from another and form a triangle on the color wheel.



67.0716, 68.0955, 57.7528



58.4050, 68.0955, 77.3191



69.0291, 68.0955, 89.7733

Complementary

The Complementary color scheme is a pair of colors which are on the opposite of each other on the color wheel.



67.0716, 68.0955, 57.7528



60.1727, 64.9664, 88.7256

Split Complementary

Split-complementary colors differ from the complementary color scheme. The scheme consists of three colors, the original color and two neighbors of the complement color.



65.8219, 68.0955, 94.4799



67.0716, 68.0955, 57.7528



59.7430, 68.0955, 86.8803

Square

The Square scheme is like the rectangle color scheme, but the four colors are evenly spaced on the color wheel.



67.0716, 68.0955, 57.7528



58.7128, 68.0955, 67.6939



62.4293, 68.0955, 93.3766



71.1294, 68.0955, 80.9923

Rectangle

The Rectangle color scheme consists of four colors that form a rectangle on the color wheel.



67.0716, 68.0955, 57.7528



61.5149, 68.0955, 58.8235



62.4293, 68.0955, 93.3766



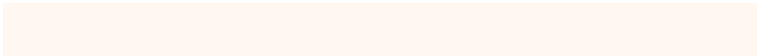
68.0401, 68.0955, 91.9183

Sweetspot

The Sweet Spot groups the original color and five complimentary colors.



67.0734, 68.0986, 57.7542



90.1426, 93.9714, 95.5919



64.9364, 59.0873, 71.6461



19.1838, 19.9771, 20.1641



0.0000, 0.0000, 0.0000



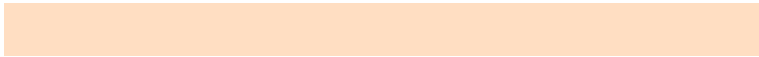
20.3446, 21.4041, 23.3091

Same Dimension

The Same Dimension uses a secret algorithm to generate beautiful new colors.



67.0734, 68.0986, 57.7542



77.1969, 77.6296, 61.8365



73.3242, 80.6001, 59.8378



15.6469, 16.2168, 15.8242



22.2978, 16.2899, 1.9690



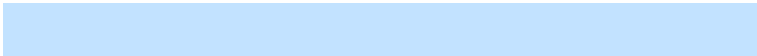
1.8464, 1.4702, 0.1865

Inverse Universe

The Inverse Universe completely reimagines the original color for something new.



60.1727, 64.9664, 88.7256



67.5377, 73.2445, 105.1857



54.6638, 53.9487, 86.8893



14.8945, 15.8754, 19.2015



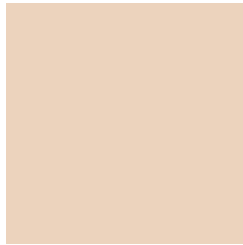
12.5545, 11.7561, 45.3504



1.0820, 1.1155, 3.5932

Previews

White Background



This preview shows how the XYZ color 67.0716, 68.0955, 57.7528 looks on a white background.

Color Contrast Check

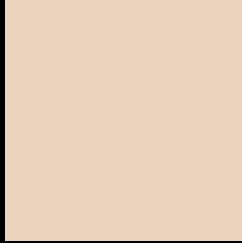
Large Text (above 18pt) WCAG AA × Fail

Any Text WCAG AA × Fail

Large Text (above 18pt) WCAG AAA × Fail

Any Text WCAG AAA × Fail

Black Background



This preview shows how the XYZ color 67.0716, 68.0955, 57.7528 looks on a black background.

Color Contrast Check

Large Text (above 18pt) WCAG AA ✓ Pass

Any Text WCAG AA ✓ Pass

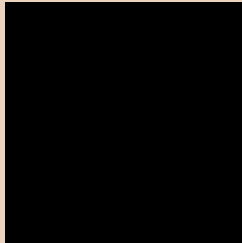
Large Text (above 18pt) WCAG AAA ✓ Pass

Any Text WCAG AAA ✓ Pass

If you want to check with other color combinations, try the [Color Contrast Checker](#).

XYZ 67.0716, 68.0955, 57.7528

Background



This preview shows how black text looks on a background with the XYZ color 67.0716, 68.0955, 57.7528.



This preview shows how white text looks on a background with the XYZ color 67.0716, 68.0955,

57.7528.

Color Blindness Simulation

Color vision deficiency is a very complex topic, and I could not describe the different causes any better than Wikipedia does, so if you want to learn more, you should check out their [article about color blindness](#).

Dichromacy



Original Color

67.0716, 68.0955, 57.7528

Protanopia

64.7557, 68.3700, 59.0740

Deuteranopia

69.2633, 67.7558, 58.1428



Tritanopia

71.1913, 67.9418, 78.4691

Trichromacy



Original Color

67.0716, 68.0955, 57.7528

Protanomaly

65.6539, 68.4689, 58.4707

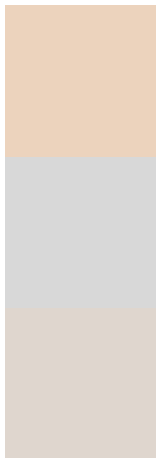
Deuteranomaly

68.4681, 67.7067, 58.1752

Tritanomaly

69.7853, 68.1156, 70.4423

Monochromacy



Original Color

67.0716, 68.0955, 57.7528

Achromatopsia

65.2694, 68.6685, 74.7800

Achromatomaly

65.6186, 68.2373, 68.1052

CSS Examples

Text

The CSS property to change the color of the text to XYZ 67.0716, 68.0955, 57.7528 is called "color". The color property can be set on classes, ids or directly on the HTML element.

This example shows how text in the color `rgb(236, 211, 189)` looks like.

```
.text, #text, p{  
    color:rgb(236, 211, 189)  
}
```

If you want to add a text shadow in that color use the text-shadow property, you can generate a text shadow directly with our [CSS Text Shadow Generator](#).

Here you see how black text with a 4 pixel rgb(236, 211, 189) colored shadow looks like.

```
.shadow{ text-shadow: 4px 4px 2px rgb(236, 211, 189) }
```

Border

The CSS property to change the border of an element to XYZ 67.0716, 68.0955, 57.7528 is called "border". The border property can be set on classes, ids or directly on the HTML element.

This example shows the color as border, it can be applied via the CSS property "border" or "border-color".

```
.border, #border, table{ border:4px solid rgb(236, 211, 189) }
```


If only the border color should be changed use the property `border-color`.

```
.border{ border-color:rgb(236, 211, 189) }
```

If you want to add a box shadow in that color use:

Here you see how a box with a 4 pixel `rgb(236, 211, 189)` colored shadow looks like.

```
.boxshadow{ -moz-box-shadow:4px 4px 4px  
4px rgb(236, 211, 189); -webkit-box-  
shadow:4px 4px 4px 4px rgb(236, 211, 189);  
box-shadow:4px 4px 4px 4px rgb(236, 211,  
189) }
```

Background

The CSS property to change the background color of an element to XYZ 67.0716, 68.0955, 57.7528 is called "background". The background property can be set on classes, ids or directly on the HTML element.

```
.background, #background, body{  
background: rgb(236, 211, 189) }
```

If only the background color should be changed can be used:

```
.background{ background-color: rgb(236,  
211, 189) }
```

This example shows the color as background, it is applied via the CSS property "background".

To optimize and compress your CSS code, you can use our [online CSS compressor and optimizer](#) based on csstidy. If you want to create a linear or radial gradient as background or border, check our [CSS Gradient Generator](#).

Hey! You found this booklet interesting? Support Converting Colors with the new Membership Option!

The pro membership hides all ads, plus gives you double the colors in the color bucket, and more awesome pro features!

[Learn more, Memberships starting at \\$2.50/m!](#)

**Follow me
on Twitter!**

@ConvertingColor