

Converting Colors

XYZ(66.9239, 65.5066, 72.7351)

Have a look what the booklet for
XYZ(66.9239, 65.5066, 72.7351)
contains.

XYZ(66.9239, 65.5066, 72.7351)	3
<i>Conversions</i>	4
<i>Details</i>	6
<i>Harmonies</i>	12
<i>Previews</i>	24
<i>Color Blindness Simulation</i>	28
<i>CSS Examples</i>	31

Color

**XYZ(66.9239, 65.5066,
72.7351)**

Conversions

Conversions Part 1

Format	Color
Hex	E7CDD6
RGB	231, 205, 214
RGB Percent	91%, 80%, 84%
CMY	0.0941, 0.1961, 0.1608
CMYK	0.00, 0.11, 0.07, 0.09
HSL	339°, 35%, 85%
HSV	339°, 11%, 91%
XYZ	66.9239, 65.5066, 72.7351
YIQ	213.8000, 12.6070, 8.3110

Conversions

Conversions Part 2

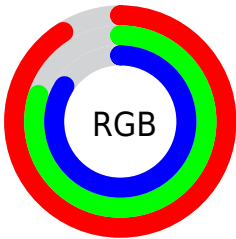
Format	Color
R _Y B	231, 205, 214
Decimal	15191510
CIE Lab	84.74, 10.58, -1.14
CIE LCh	85, 10.639, 353.866
Yxy	65.5066, 0.3262, 0.3193
Android (android.graphics.Color)	4293381590 (0xFFE7CDD6)
YUV	213.8000, 0.0986, 15.0844
Hunter-Lab	80.9361, 5.9585, 3.3730

Details

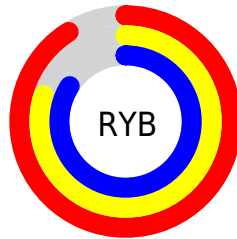
The XYZ color **66.9239, 65.5066, 72.7351** is a light color, and the websafe version is hex **CCCCCC**. A complement of this color would be **66.9401, 75.4066, 80.1377**, and the grayscale version is **63.7770, 67.0984, 73.0702**.

A 20% lighter version of the original color is **95.0500, 100.0000, 108.9000**, and **35.0038, 33.7504, 37.4705** is the 20% darker color. If you saturate the color by 10%, you get **59.9606, 54.5249, 61.3332**, and if you desaturate by 10%, it is **74.8857, 78.1972, 85.3542**.

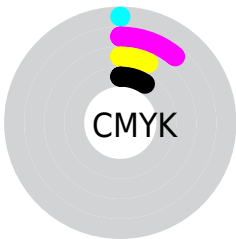
Distribution



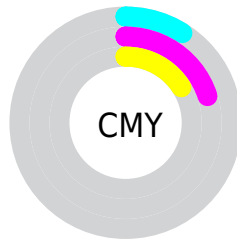
- Red (91%)
- Green (80%)
- Blue (84%)



- Red (91%)
- Yellow (80%)
- Blue (84%)



- Cyan (0%)
- Magenta (11%)
- Yellow (7%)
- Black (9%)



- Cyan (9%)
- Magenta (20%)
- Yellow (16%)

Brightness & Saturation Gradients

These gradients show how the XYZ color 66.9239, 65.5066, 72.7351 changes by changing the brightness by 10 percent. The first figure shows a shift by +10% for each color and the second figure -10%.

Similar to the brightness gradients but the following saturation gradients show a change of the XYZ color 66.9239, 65.5066, 72.7351 by changing the saturation by 10% instead.

66.9239, 65.5066,
72.7351

66.9239, 65.5066,
72.7351

439.1106,
444.6102, 489.1423

49.2933, 47.8720,
53.2689

113.8618,
112.7779, 124.8185

35.0677, 33.7255,
37.6283

143.8997,
143.1833, 158.2728

23.8818, 22.6828,
25.3947

178.8041,
178.6145, 197.2268

15.3702, 14.3595,
16.1497

218.9403,
219.4558, 242.0991

9.1676, 8.3711,
9.4746

264.6737,
266.0917, 293.3083

4.9087, 4.3333,
4.9510

316.3697,

2.2280, 1.8617,

318.9064, 351.2729

2.1603

374.3935,
378.2845, 416.4114

■ 0.7574, 0.5252,
0.6513

■ 0.0000, 0.0000,
0.0000

■ 66.9239, 65.5066,
72.7351

■ 66.9239, 65.5066,
72.7351

■ 59.9606, 54.5249,
61.3332

■ 74.8857, 78.1972,
85.3542

■ 53.9496, 45.1703,
51.1068

■ 83.8784, 92.6567,
99.2219

■ 48.8497, 37.3672,
42.0181

■ 86.7653, 95.7291,
108.5123

■ 44.6140, 31.0304,
34.0254

■ 41.1915, 26.0668,
27.0841

■ 38.5253, 22.3722,
21.1465

■ 36.5509, 19.8273,
16.1601

■ 35.1917, 18.2897,
12.0667

■ 34.4011, 17.5674,
9.1554

Harmonies

Analogous

The Analogous color harmony consists of three colors that are next to each other on the color wheel.



66.0317, 65.5066, 79.3364



66.9239, 65.5066, 72.7351



66.5415, 65.5066, 66.1531

Triad

The Triadic color harmony groups three colors that are evenly spaced from another and form a triangle on the color wheel.



66.9239, 65.5066, 72.7351



60.4288, 65.5066, 59.9989



59.6023, 65.5066, 82.4429

Complementary

The Complementary color scheme is a pair of colors which are on the opposite of each other on the color wheel.



66.9239, 65.5066, 72.7351



66.9401, 75.4066, 80.1377

Split Complementary

Split-complementary colors differ from the complementary color scheme. The scheme consists of three colors, the original color and two neighbors of the complement color.



58.1701, 65.5066, 76.7609



66.9239, 65.5066, 72.7351



58.6387, 65.5066, 63.8730

Square

The Square scheme is like the rectangle color scheme, but the four colors are evenly spaced on the color wheel.



66.9239, 65.5066, 72.7351



62.7523, 65.5066, 59.0719



57.8219, 65.5066, 69.9343



61.7744, 65.5066, 85.1664

Rectangle

The Rectangle color scheme consists of four colors that form a rectangle on the color wheel.



66.9239, 65.5066, 72.7351



65.6200, 65.5066, 62.6233



57.8219, 65.5066, 69.9343



59.0207, 65.5066, 80.7988

Sweetspot

The Sweet Spot groups the original color and five complimentary colors.



66.9258, 65.5095, 72.7365



91.8628, 94.8978, 103.9157



66.3510, 64.9491, 84.6415



19.4843, 20.0274, 21.9622



0.0000, 0.0000, 0.0000



20.3446, 21.4041, 23.3091

Same Dimension

The Same Dimension uses a secret algorithm to generate beautiful new colors.



66.9258, 65.5095, 72.7365



81.1663, 77.8863, 86.8423



66.7526, 66.9514, 67.1657



14.5819, 14.4499, 15.9984



19.3383, 9.8695, 5.4103



1.4716, 0.7463, 0.6238

Inverse Universe

The Inverse Universe completely reimagines the original color for something new.



66.9258, 65.5095, 72.7365



81.1663, 77.8863, 86.8423



67.0992, 73.7433, 86.2995



14.5819, 14.4499, 15.9984



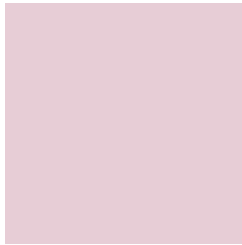
19.3383, 9.8695, 5.4103



1.4716, 0.7463, 0.6238

Previews

White Background



This preview shows how the XYZ color 66.9239, 65.5066, 72.7351 looks on a white background.

Color Contrast Check

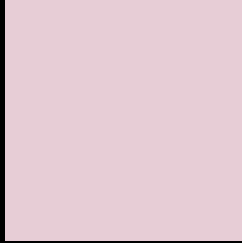
Large Text (above 18pt) WCAG AA × Fail

Any Text WCAG AA × Fail

Large Text (above 18pt) WCAG AAA × Fail

Any Text WCAG AAA × Fail

Black Background



This preview shows how the XYZ color 66.9239, 65.5066, 72.7351 looks on a black background.

Color Contrast Check

Large Text (above 18pt) WCAG AA ✓ Pass

Any Text WCAG AA ✓ Pass

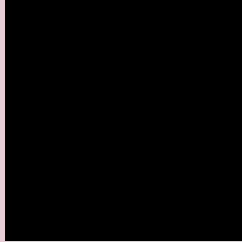
Large Text (above 18pt) WCAG AAA ✓ Pass

Any Text WCAG AAA ✓ Pass

If you want to check with other color combinations, try the [Color Contrast Checker](#).

XYZ 66.9239, 65.5066, 72.7351

Background



This preview shows how black text looks on a background with the XYZ color 66.9239, 65.5066, 72.7351.



This preview shows how white text looks on a background with the XYZ color 66.9239, 65.5066,

72.7351.

Color Blindness Simulation

Color vision deficiency is a very complex topic, and I could not describe the different causes any better than Wikipedia does, so if you want to learn more, you should check out their [article about color blindness](#).

Dichromacy



Original Color

66.9239, 65.5066, 72.7351

Protanopia

63.5502, 65.8944, 75.0151

Deuteranopia

66.9239, 65.5066, 72.7351



Tritanopia

67.7898, 65.5088, 76.7817

Trichromacy



Original Color

66.9239, 65.5066, 72.7351

Protanomaly

64.7103, 65.7744, 74.2509

Deuteranomaly

66.9239, 65.5066, 72.7351

Tritanomaly

67.5265, 65.4035, 75.3948

Monochromacy



Original Color

66.9239, 65.5066, 72.7351

Achromatopsia

63.9157, 67.2443, 73.2291

Achromatomaly

64.9471, 66.6592, 73.0618

CSS Examples

Text

The CSS property to change the color of the text to XYZ 66.9239, 65.5066, 72.7351 is called "color". The color property can be set on classes, ids or directly on the HTML element.

This example shows how text in the color `rgb(231, 205, 214)` looks like.

```
.text, #text, p{  
    color:rgb(231, 205, 214)  
}
```

If you want to add a text shadow in that color use the text-shadow property, you can generate a text shadow directly with our [CSS Text Shadow Generator](#).

Here you see how black text with a 4 pixel rgb(231, 205, 214) colored shadow looks like.

```
.shadow{ text-shadow: 4px 4px 2px rgb(231, 205, 214) }
```

Border

The CSS property to change the border of an element to XYZ 66.9239, 65.5066, 72.7351 is called "border". The border property can be set on classes, ids or directly on the HTML element.

This example shows the color as border, it can be applied via the CSS property "border" or "border-color".

```
.border, #border, table{ border:4px solid rgb(231, 205, 214) }
```


If only the border color should be changed use the property `border-color`.

```
.border{ border-color:rgb(231, 205, 214) }
```

If you want to add a box shadow in that color use:

Here you see how a box with a 4 pixel `rgb(231, 205, 214)` colored shadow looks like.

```
.boxshadow{ -moz-box-shadow:4px 4px 4px  
4px rgb(231, 205, 214); -webkit-box-  
shadow:4px 4px 4px 4px rgb(231, 205, 214);  
box-shadow:4px 4px 4px 4px rgb(231, 205,  
214) }
```

Background

The CSS property to change the background color of an element to XYZ 66.9239, 65.5066, 72.7351 is called "background". The background property can be set on classes, ids or directly on the HTML element.

```
.background, #background, body{  
background: rgb(231, 205, 214) }
```

If only the background color should be changed can be used:

```
.background{ background-color: rgb(231,  
205, 214) }
```

This example shows the color as background, it is applied via the CSS property "background".

To optimize and compress your CSS code, you can use our [online CSS compressor and optimizer](#) based on csstidy. If you want to create a linear or radial gradient as background or border, check our [CSS Gradient Generator](#).

Hey! You found this booklet interesting? Support Converting Colors with the new Membership Option!

The pro membership hides all ads, plus gives you double the colors in the color bucket, and more awesome pro features!

[Learn more, Memberships starting at \\$2.50/m!](#)

**Follow me
on Twitter!**

@ConvertingColor