

Converting Colors

XYZ(66.9350, 67.2717, 75.1025)

Have a look what the booklet for
XYZ(66.9350, 67.2717, 75.1025)
contains.

XYZ(66.9350, 67.2717, 75.1025)	3
<i>Conversions</i>	4
<i>Details</i>	6
<i>Harmonies</i>	12
<i>Previews</i>	24
<i>Color Blindness Simulation</i>	28
<i>CSS Examples</i>	31

Color

**XYZ(66.9350, 67.2717,
75.1025)**

Conversions

Conversions Part 1

Format	Color
Hex	E2D2D9
RGB	226, 210, 217
RGB Percent	89%, 82%, 85%
CMY	0.1137, 0.1764, 0.1490
CMYK	0.00, 0.07, 0.04, 0.11
HSL	334°, 22%, 85%
HSV	334°, 7%, 89%
XYZ	66.9350, 67.2717, 75.1025
YIQ	215.5820, 7.2890, 5.5690

Conversions

Conversions Part 2

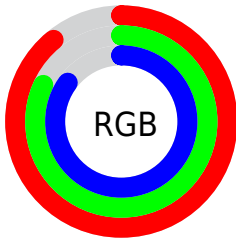
Format	Color
R _Y B	226, 210, 217
Decimal	14865113
CIE Lab	85.64, 6.74, -1.47
CIE LCh	86, 6.895, 347.715
Yxy	67.2717, 0.3198, 0.3214
Android (android.graphics.Color)	4293055193 (0xFFE2D2D9)
YUV	215.5820, 0.6991, 9.1366
Hunter-Lab	82.0193, 2.1379, 3.1236

Details

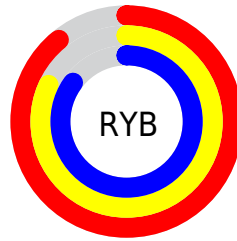
The XYZ color **66.9350, 67.2717, 75.1025** is a light color, and the websafe version is hex **CCCCCC**. A complement of this color would be **66.5634, 73.2106, 77.6442**, and the grayscale version is **64.9795, 68.3635, 74.4479**.

A 20% lighter version of the original color is **95.0500, 100.0000, 108.9000**, and **35.2046, 35.0435, 39.0910** is the 20% darker color. If you saturate the color by 10%, you get **60.1542, 56.2552, 64.9945**, and if you desaturate by 10%, it is **74.6350, 79.9210, 86.1473**.

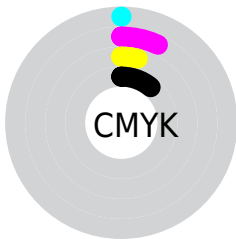
Distribution



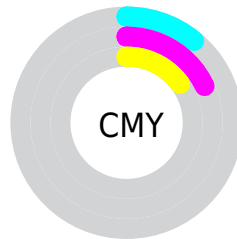
- Red (89%)
- Green (82%)
- Blue (85%)



- Red (89%)
- Yellow (82%)
- Blue (85%)



- Cyan (0%)
- Magenta (7%)
- Yellow (4%)
- Black (11%)



- Cyan (11%)
- Magenta (18%)
- Yellow (15%)

Brightness & Saturation Gradients

These gradients show how the XYZ color 66.9350, 67.2717, 75.1025 changes by changing the brightness by 10 percent. The first figure shows a shift by +10% for each color and the second figure -10%.

Similar to the brightness gradients but the following saturation gradients show a change of the XYZ color 66.9350, 67.2717, 75.1025 by changing the saturation by 10% instead.

66.9350, 67.2717,
75.1025

66.9350, 67.2717,
75.1025

439.1495,
450.9113, 497.5346

49.3023, 49.3055,
55.1946

113.8776,
115.3096, 128.2059

35.0749, 34.8619,
39.1579

143.9182,
146.1501, 162.2385

23.8873, 23.5565,
26.5738

178.8255,
182.0508, 201.8164

15.3744, 15.0049,
17.0238

218.9648,
223.3961, 247.3581

9.1706, 8.8229,
10.0893

264.7015,
270.5704, 299.2823

4.9106, 4.6258,
5.3518

316.4009,

2.2291, 2.0294,

323.9581, 358.0074

2.3928

374.4285,
383.9436, 423.9520

■ 0.7580, 0.6245,
0.7825

■ 0.0000, 0.0000,
0.0000

■ 66.9350, 67.2717,
75.1025

■ 66.9350, 67.2717,
75.1025

■ 60.1542, 56.2552,
64.9945

■ 74.6350, 79.9210,
86.1473

■ 54.2513, 46.7957,
55.7930

■ 83.2165, 94.1258,
98.1276

■ 49.1899, 38.8248,
47.4721

■ 85.1744, 94.9090,
108.4378

■ 44.9292, 32.2653,
40.0030

■ 41.4244, 27.0331,
33.3552

■ 38.6263, 23.0351,
27.4958

■ 36.4795, 20.1658,
22.3890

■ 34.9193, 18.3019,
17.9954

■ 33.8623, 17.2828,
14.2679

Harmonies

Analogous

The Analogous color harmony consists of three colors that are next to each other on the color wheel.



66.1992, 67.2717, 79.2198



66.9350, 67.2717, 75.1025



66.8587, 67.2717, 70.6481

Triad

The Triadic color harmony groups three colors that are evenly spaced from another and form a triangle on the color wheel.



66.9350, 67.2717, 75.1025



63.0256, 67.2717, 65.3166



61.9300, 67.2717, 79.8315

Complementary

The Complementary color scheme is a pair of colors which are on the opposite of each other on the color wheel.



66.9350, 67.2717, 75.1025



66.5634, 73.2106, 77.6442

Split Complementary

Split-complementary colors differ from the complementary color scheme. The scheme consists of three colors, the original color and two neighbors of the complement color.



61.1070, 67.2717, 75.9097



66.9350, 67.2717, 75.1025



61.7323, 67.2717, 67.5831

Square

The Square scheme is like the rectangle color scheme, but the four colors are evenly spaced on the color wheel.



66.9350, 67.2717, 75.1025



64.5842, 67.2717, 65.1204



61.0352, 67.2717, 71.4232



63.2995, 67.2717, 82.0240

Rectangle

The Rectangle color scheme consists of four colors that form a rectangle on the color wheel.



66.9350, 67.2717, 75.1025



66.3577, 67.2717, 68.0849



61.0352, 67.2717, 71.4232



61.5813, 67.2717, 78.6646

Sweetspot

The Sweet Spot groups the original color and five complimentary colors.



66.9369, 67.2746, 75.1040



92.9859, 96.6056, 105.9498



65.9298, 66.6164, 81.3358



19.9245, 20.7131, 22.7087



0.0000, 0.0000, 0.0000



20.3446, 21.4041, 23.3091

Same Dimension

The Same Dimension uses a secret algorithm to generate beautiful new colors.



66.9369, 67.2746, 75.1040



87.0906, 86.9505, 97.4011



66.2438, 67.3141, 70.4778



13.9550, 13.7996, 15.5330



19.2311, 9.7595, 7.8829



1.3774, 0.6942, 0.7802

Inverse Universe

The Inverse Universe completely reimagines the original color for something new.



66.9369, 67.2746, 75.1040



87.0906, 86.9505, 97.4011



67.2872, 73.1529, 82.5259



13.9550, 13.7996, 15.5330



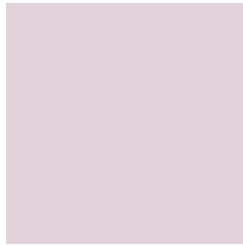
19.2311, 9.7595, 7.8829



1.3774, 0.6942, 0.7802

Previews

White Background



This preview shows how the XYZ color 66.9350, 67.2717, 75.1025 looks on a white background.

Color Contrast Check

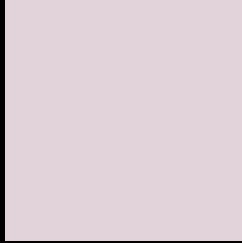
Large Text (above 18pt) WCAG AA × Fail

Any Text WCAG AA × Fail

Large Text (above 18pt) WCAG AAA × Fail

Any Text WCAG AAA × Fail

Black Background



This preview shows how the XYZ color 66.9350, 67.2717, 75.1025 looks on a black background.

Color Contrast Check

Large Text (above 18pt) WCAG AA ✓ Pass

Any Text WCAG AA ✓ Pass

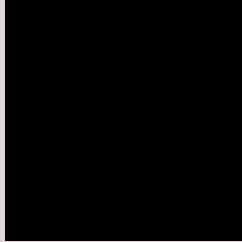
Large Text (above 18pt) WCAG AAA ✓ Pass

Any Text WCAG AAA ✓ Pass

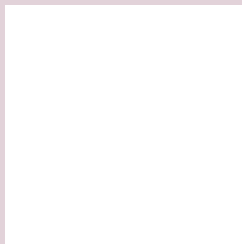
If you want to check with other color combinations, try the [Color Contrast Checker](#).

XYZ 66.9350, 67.2717, 75.1025

Background



This preview shows how black text looks on a background with the XYZ color 66.9350, 67.2717, 75.1025.



This preview shows how white text looks on a background with the XYZ color 66.9350, 67.2717,

Color Blindness Simulation

Color vision deficiency is a very complex topic, and I could not describe the different causes any better than Wikipedia does, so if you want to learn more, you should check out their [article about color blindness](#).

Dichromacy



Original Color

66.9350, 67.2717, 75.1025

Protanopia

64.8993, 67.3019, 76.5878

Deuteranopia

68.5720, 67.0112, 75.6500



Tritanopia

68.0696, 67.3681, 80.6498

Trichromacy



Original Color

66.9350, 67.2717, 75.1025

Protanomaly

65.7136, 67.3646, 75.8689

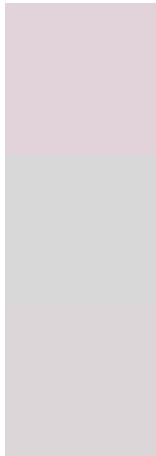
Deuteranomaly

67.8439, 66.9967, 75.6856

Tritanomaly

67.6638, 67.2057, 78.5130

Monochromacy



Original Color

66.9350, 67.2717, 75.1025

Achromatopsia

65.2694, 68.6685, 74.7800

Achromatomaly

65.9564, 68.2666, 74.6662

CSS Examples

Text

The CSS property to change the color of the text to XYZ 66.9350, 67.2717, 75.1025 is called "color". The color property can be set on classes, ids or directly on the HTML element.

This example shows how text in the color rgb(226, 210, 217) looks like.

```
.text, #text, p{  
    color:rgb(226, 210, 217)  
}
```

If you want to add a text shadow in that color use the text-shadow property, you can generate a text shadow directly with our [CSS Text Shadow Generator](#).

Here you see how black text with a 4 pixel rgb(226, 210, 217) colored shadow looks like.

```
.shadow{ text-shadow: 4px 4px 2px rgb(226, 210, 217) }
```

Border

The CSS property to change the border of an element to XYZ 66.9350, 67.2717, 75.1025 is called "border". The border property can be set on classes, ids or directly on the HTML element.

This example shows the color as border, it can be applied via the CSS property "border" or "border-color".

```
.border, #border, table{ border:4px solid rgb(226, 210, 217) }
```


If only the border color should be changed use the property `border-color`.

```
.border{ border-color:rgb(226, 210, 217) }
```

If you want to add a box shadow in that color use:

Here you see how a box with a 4 pixel `rgb(226, 210, 217)` colored shadow looks like.

```
.boxshadow{ -moz-box-shadow:4px 4px 4px  
4px rgb(226, 210, 217); -webkit-box-  
shadow:4px 4px 4px 4px rgb(226, 210, 217);  
box-shadow:4px 4px 4px 4px rgb(226, 210,  
217) }
```

Background

The CSS property to change the background color of an element to XYZ 66.9350, 67.2717, 75.1025 is called "background". The background property can be set on classes, ids or directly on the HTML element.

```
.background, #background, body{  
background: rgb(226, 210, 217) }
```

If only the background color should be changed can be used:

```
.background{ background-color: rgb(226,  
210, 217) }
```

This example shows the color as background, it is applied via the CSS property "background".

To optimize and compress your CSS code, you can use our [online CSS compressor and optimizer](#) based on csstidy. If you want to create a linear or radial gradient as background or border, check our [CSS Gradient Generator](#).

Hey! You found this booklet interesting? Support Converting Colors with the new Membership Option!

The pro membership hides all ads, plus gives you double the colors in the color bucket, and more awesome pro features!

[Learn more, Memberships starting at \\$2.50/m!](#)

**Follow me
on Twitter!**

@ConvertingColor