

Converting Colors

XYZ(66.9381, 58.0680, 84.7890)

Have a look what the booklet for
XYZ(66.9381, 58.0680, 84.7890)
contains.

XYZ(66.9014, 57.9273, 84.7458)	3
<i>Conversions</i>	4
<i>Details</i>	6
<i>Harmonies</i>	12
<i>Previews</i>	24
<i>Color Blindness Simulation</i>	28
<i>CSS Examples</i>	31

Color

**XYZ(66.9014, 57.9273,
84.7458)**

Conversions

Conversions Part 1

Format	Color
Hex	EEB7E9
RGB	238, 183, 233
RGB Percent	93%, 72%, 91%
CMY	0.0667, 0.2823, 0.0863
CMYK	0.00, 0.23, 0.02, 0.07
HSL	305°, 62%, 83%
HSV	305°, 23%, 93%
XYZ	66.9014, 57.9273, 84.7458
YIQ	205.1450, 16.7300, 27.2100

Conversions

Conversions Part 2

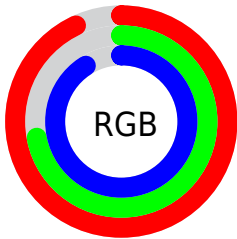
Format	Color
R _Y B	238, 183, 233
Decimal	15644649
CIE Lab	80.70, 27.97, -17.25
CIE LCh	81, 32.859, 328.334
Yxy	57.9273, 0.3192, 0.2764
Android (android.graphics.Color)	4293834729 (0xFFEEB7E9)
YUV	205.1450, 13.7325, 28.8138
Hunter-Lab	76.1100, 23.7107, -12.7403

Details

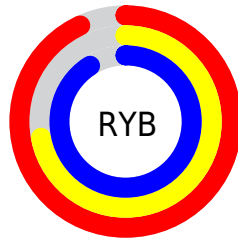
The XYZ color **66.9014, 57.9273, 84.7458** is a light color, and the websafe version is hex **FFCCFF**. A complement of this color would be **59.1824, 74.8490, 58.9083**, and the grayscale version is **58.0300, 61.0521, 66.4857**.

A 20% lighter version of the original color is **90.1565, 90.2130, 107.2688**, and **34.9745, 28.9633, 45.3421** is the 20% darker color. If you saturate the color by 10%, you get **62.0947, 48.8046, 81.6282**, and if you desaturate by 10%, it is **72.5454, 68.7166, 88.1625**.

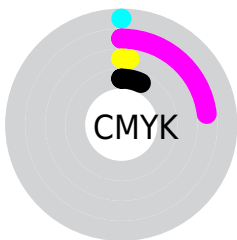
Distribution



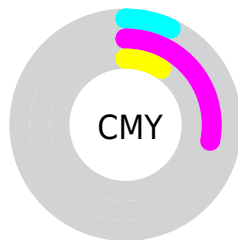
- Red (93%)
- Green (72%)
- Blue (91%)



- Red (93%)
- Yellow (72%)
- Blue (91%)



- Cyan (0%)
- Magenta (23%)
- Yellow (2%)
- Black (7%)



- Cyan (7%)
- Magenta (28%)
- Yellow (9%)

Brightness & Saturation Gradients

These gradients show how the XYZ color 66.9014, 57.9273, 84.7458 changes by changing the brightness by 10 percent. The first figure shows a shift by +10% for each color and the second figure -10%.

Similar to the brightness gradients but the following saturation gradients show a change of the XYZ color 66.9014, 57.9273, 84.7458 by changing the saturation by 10% instead.

66.9014, 57.9273,
84.7458

66.9014, 57.9273,
84.7458

439.0317,
416.9150, 530.9092

49.2749, 41.7502,
63.0824

113.8297,
101.8170, 141.8890

35.0530, 28.9057,
45.4665

143.8622,
130.2984, 178.2058

23.8704, 19.0095,
31.4794

178.7608,
163.6500, 220.2443

15.3618, 11.6772,
20.7026

218.8907,
202.2562, 268.4229

9.1616, 6.5243,
12.7177

264.6174,
246.5014, 323.1601

4.9047, 3.1664,
7.1060

316.3063,

2.2256, 1.2192,

296.7700, 384.8746

3.4490

374.3226,
353.4464, 453.9847

■ 0.7562, 0.0773,
1.3282

■ 0.0000, 0.0000,
0.0848

■ 66.9014, 57.9273,
84.7458

■ 66.9014, 57.9273,
84.7458

■ 62.0947, 48.8046,
81.6282

■ 72.5454, 68.7166,
88.1625

■ 58.0783, 41.2575,
78.7921

■ 79.0603, 81.2424,
91.8876

■ 54.8085, 35.1977,
76.2234

■ 86.4841, 95.5801,
95.9345

■ 52.2356, 30.5254,
73.9055

■ 86.9960, 96.0876,
97.6963

50.3032, 27.1284,
71.8196

87.3224, 96.2182,
99.4152

48.9467, 24.8770,
69.9440

87.6527, 96.3503,
101.1545

48.0874, 23.6144,
68.2524

87.9869, 96.4840,
102.9142

47.7019, 23.1540,
67.1661

88.3249, 96.6192,
104.6943

88.6669, 96.7560,
106.4950

Harmonies

Analogous

The Analogous color harmony consists of three colors that are next to each other on the color wheel.



61.4725, 57.9273, 101.9215



66.9014, 57.9273, 84.7458



69.1268, 57.9273, 64.1634

Triad

The Triadic color harmony groups three colors that are evenly spaced from another and form a triangle on the color wheel.



66.9014, 57.9273, 84.7458



55.4376, 57.9273, 32.6575



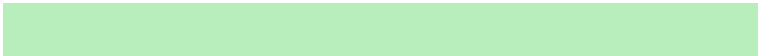
44.3736, 57.9273, 82.4798

Complementary

The Complementary color scheme is a pair of colors which are on the opposite of each other on the color wheel.



66.9014, 57.9273, 84.7458



59.1824, 74.8490, 58.9083

Split Complementary

Split-complementary colors differ from the complementary color scheme. The scheme consists of three colors, the original color and two neighbors of the complement color.



43.0409, 57.9273, 61.9950



66.9014, 57.9273, 84.7458



49.1063, 57.9273, 35.6131

Square

The Square scheme is like the rectangle color scheme, but the four colors are evenly spaced on the color wheel.



66.9014, 57.9273, 84.7458



62.1808, 57.9273, 36.3589



44.7022, 57.9273, 45.4513



48.5013, 57.9273, 100.4358

Rectangle

The Rectangle color scheme consists of four colors that form a rectangle on the color wheel.



66.9014, 57.9273, 84.7458



68.3668, 57.9273, 52.0545



44.7022, 57.9273, 45.4513



43.5995, 57.9273, 75.5460

Sweetspot

The Sweet Spot groups the original color and five complimentary colors.



66.9032, 57.9298, 84.7470



89.3574, 89.0312, 105.7188



53.0052, 50.6815, 87.8790



19.0263, 18.8643, 22.5713



0.0000, 0.0000, 0.0000



20.3446, 21.4041, 23.3091

Same Dimension

The Same Dimension uses a secret algorithm to generate beautiful new colors.



66.9032, 57.9298, 84.7470



75.3197, 62.1839, 97.2536



63.3259, 56.4990, 65.9096



16.3887, 16.0052, 19.6029



26.6379, 12.9276, 37.6051



2.2340, 1.0826, 3.2231

Inverse Universe

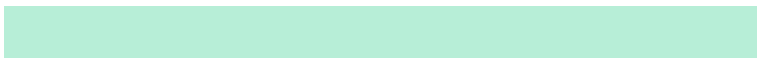
The Inverse Universe completely reimagines the original color for something new.



66.9032, 57.9298, 84.7470



75.3197, 62.1839, 97.2536



62.3816, 76.1287, 75.7547



16.3887, 16.0052, 19.6029



26.6379, 12.9276, 37.6051



2.2340, 1.0826, 3.2231

Previews

White Background



This preview shows how the XYZ color 66.9014, 57.9273, 84.7458 looks on a white background.

Color Contrast Check

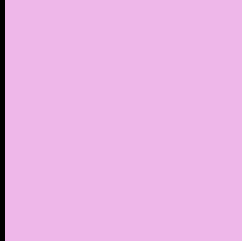
Large Text (above 18pt) WCAG AA × Fail

Any Text WCAG AA × Fail

Large Text (above 18pt) WCAG AAA × Fail

Any Text WCAG AAA × Fail

Black Background



This preview shows how the XYZ color 66.9014, 57.9273, 84.7458 looks on a black background.

Color Contrast Check

Large Text (above 18pt) WCAG AA ✓ Pass

Any Text WCAG AA ✓ Pass

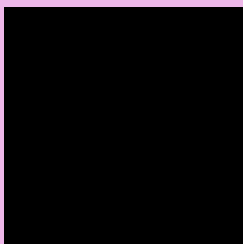
Large Text (above 18pt) WCAG AAA ✓ Pass

Any Text WCAG AAA ✓ Pass

If you want to check with other color combinations, try the [Color Contrast Checker](#).

XYZ 66.9014, 57.9273, 84.7458

Background



This preview shows how black text looks on a background with the XYZ color 66.9014, 57.9273, 84.7458.



This preview shows how white text looks on a background with the XYZ color 66.9014, 57.9273,

Color Blindness Simulation

Color vision deficiency is a very complex topic, and I could not describe the different causes any better than Wikipedia does, so if you want to learn more, you should check out their [article about color blindness](#).

Dichromacy



Original Color

66.9014, 57.9273, 84.7458

Protanopia

58.2384, 58.4549, 93.8014

Deuteranopia

59.6173, 58.3712, 83.7259



Tritanopia

62.6944, 57.7707, 64.3464

Trichromacy



Original Color

66.9014, 57.9273, 84.7458



Protanomaly

60.8106, 57.8411, 90.3975



Deuteranomaly

62.1097, 57.9932, 84.2642



Tritanomaly

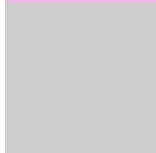
63.9575, 57.6350, 71.3721

Monochromacy



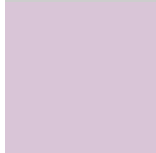
Original Color

66.9014, 57.9273, 84.7458



Achromatopsia

58.0276, 61.0496, 66.4830



Achromatomaly

60.8473, 59.5905, 72.5851

CSS Examples

Text

The CSS property to change the color of the text to XYZ 66.9014, 57.9273, 84.7458 is called "color". The color property can be set on classes, ids or directly on the HTML element.

This example shows how text in the color `rgb(238, 183, 233)` looks like.

```
.text, #text, p{  
    color:rgb(238, 183, 233)  
}
```

If you want to add a text shadow in that color use the text-shadow property, you can generate a text shadow directly with our [CSS Text Shadow Generator](#).

Here you see how black text with a 4 pixel rgb(238, 183, 233) colored shadow looks like.

```
.shadow{ text-shadow: 4px 4px 2px rgb(238, 183, 233) }
```

Border

The CSS property to change the border of an element to XYZ 66.9014, 57.9273, 84.7458 is called "border". The border property can be set on classes, ids or directly on the HTML element.

This example shows the color as border, it can be applied via the CSS property "border" or "border-color".

```
.border, #border, table{ border:4px solid rgb(238, 183, 233) }
```


If only the border color should be changed use the property `border-color`.

```
.border{ border-color:rgb(238, 183, 233) }
```

If you want to add a box shadow in that color use:

Here you see how a box with a 4 pixel `rgb(238, 183, 233)` colored shadow looks like.

```
.boxshadow{ -moz-box-shadow:4px 4px 4px  
4px rgb(238, 183, 233); -webkit-box-  
shadow:4px 4px 4px 4px rgb(238, 183, 233);  
box-shadow:4px 4px 4px 4px rgb(238, 183,  
233) }
```

Background

The CSS property to change the background color of an element to XYZ 66.9014, 57.9273, 84.7458 is called "background". The background property can be set on classes, ids or directly on the HTML element.

```
.background, #background, body{  
background: rgb(238, 183, 233) }
```

If only the background color should be changed can be used:

```
.background{ background-color: rgb(238,  
183, 233) }
```

This example shows the color as background, it is applied via the CSS property "background".

To optimize and compress your CSS code, you can use our [online CSS compressor and optimizer](#) based on csstidy. If you want to create a linear or radial gradient as background or border, check our [CSS Gradient Generator](#).

Hey! You found this booklet interesting? Support Converting Colors with the new Membership Option!

The pro membership hides all ads, plus gives you double the colors in the color bucket, and more awesome pro features!

[Learn more, Memberships starting at \\$2.50/m!](#)

**Follow me
on Twitter!**

@ConvertingColor