

Converting Colors

XYZ(67.1006, 65.1592, 73.3777)

Have a look what the booklet for
XYZ(67.1006, 65.1592, 73.3777)
contains.

XYZ(67.1373, 65.2478, 73.3456)	3
<i>Conversions</i>	4
<i>Details</i>	6
<i>Harmonies</i>	12
<i>Previews</i>	24
<i>Color Blindness Simulation</i>	28
<i>CSS Examples</i>	31

Color

**XYZ(67.1373, 65.2478,
73.3456)**

Conversions

Conversions Part 1

Format	Color
Hex	E8CCD7
RGB	232, 204, 215
RGB Percent	91%, 80%, 84%
CMY	0.0902, 0.2000, 0.1569
CMYK	0.00, 0.12, 0.07, 0.09
HSL	336°, 38%, 85%
HSV	336°, 12%, 91%
XYZ	67.1373, 65.2478, 73.3456
YIQ	213.6260, 13.1570, 9.3570

Conversions

Conversions Part 2

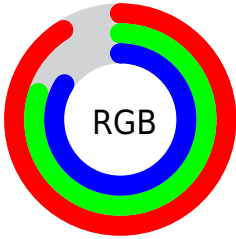
Format	Color
R _Y B	232, 204, 215
Decimal	15256791
CIE Lab	84.61, 11.62, -1.85
CIE LCh	85, 11.770, 350.939
Yxy	65.2478, 0.3263, 0.3172
Android (android.graphics.Color)	4293446871 (0xFFE8CCD7)
YUV	213.6260, 0.6774, 16.1140
Hunter-Lab	80.7761, 7.0026, 2.7073

Details

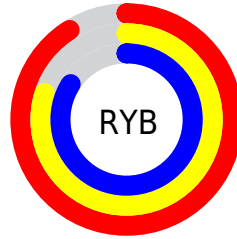
The XYZ color **67.1373, 65.2478, 73.3456** is a light color, and the websafe version is hex **FFCCCC**, and the color name is **queen pink**. A complement of this color would be **66.8121, 75.7727, 79.5144**, and the grayscale version is **63.6562, 66.9712, 72.9317**.

A 20% lighter version of the original color is **95.0500, 100.0000, 108.9000**, and **35.1560, 33.5809, 37.8865** is the 20% darker color. If you saturate the color by 10%, you get **60.2959, 54.3376, 62.5155**, and if you desaturate by 10%, it is **74.9597, 77.8688, 85.2734**.

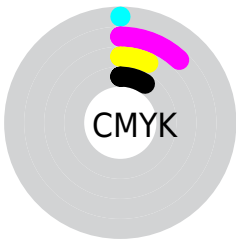
Distribution



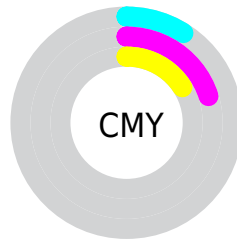
- Red (91%)
- Green (80%)
- Blue (84%)



- Red (91%)
- Yellow (80%)
- Blue (84%)



- Cyan (0%)
- Magenta (12%)
- Yellow (7%)
- Black (9%)



- Cyan (9%)
- Magenta (20%)
- Yellow (16%)

Brightness & Saturation Gradients

These gradients show how the XYZ color 67.1373, 65.2478, 73.3456 changes by changing the brightness by 10 percent. The first figure shows a shift by +10% for each color and the second figure -10%.

Similar to the brightness gradients but the following saturation gradients show a change of the XYZ color 67.1373, 65.2478, 73.3456 by changing the saturation by 10% instead.

67.1373, 65.2478,
73.3456

67.1373, 65.2478,
73.3456

439.8581,
443.6819, 491.3146

49.4673, 47.6620,
53.7651

114.1658,
112.4060, 125.6932

35.2064, 33.5593,
38.0220

144.2551,
142.7473, 159.2973

23.9892, 22.5553,
25.6978

179.2149,
178.1092, 198.4130

15.4503, 14.2655,
16.3739

219.4104,
218.8761, 243.4589

9.2244, 8.3055,
9.6319

265.2072,
265.4325, 294.8534

4.9461, 4.2911,
5.0532

316.9705,

2.2501, 1.8377,

318.1626, 353.0152

2.2192

375.0657,
377.4510, 418.3627

■ 0.7689, 0.5105,
0.6854

■ 0.0000, 0.0000,
0.0000

■ 67.1373, 65.2478,
73.3456

■ 67.1373, 65.2478,
73.3456

■ 60.2959, 54.3376,
62.5155

■ 74.9597, 77.8688,
85.2734

■ 54.3897, 45.0556,
52.7462

■ 83.7952, 92.2613,
98.3258

■ 49.3778, 37.3254,
44.0047

■ 87.0891, 95.8960,
108.5274

■ 45.2136, 31.0608,
36.2546

■ 41.8464, 26.1671,
29.4570

■ 39.2194, 22.5387,
23.5702

■ 37.2681, 20.0540,
18.5481

■ 35.9152, 18.5671,
14.3395

■ 35.1728, 17.9135,
11.5296

Harmonies

Analogous

The Analogous color harmony consists of three colors that are next to each other on the color wheel.



66.0200, 65.2478, 80.5516



67.1373, 65.2478, 73.3456



66.8526, 65.2478, 66.0000

Triad

The Triadic color harmony groups three colors that are evenly spaced from another and form a triangle on the color wheel.



67.1373, 65.2478, 73.3456



60.2290, 65.2478, 58.3755



58.8883, 65.2478, 82.8744

Complementary

The Complementary color scheme is a pair of colors which are on the opposite of each other on the color wheel.



67.1373, 65.2478, 73.3456



66.8121, 75.7727, 79.5144

Split Complementary

Split-complementary colors differ from the complementary color scheme. The scheme consists of three colors, the original color and two neighbors of the complement color.



57.4187, 65.2478, 76.3381



67.1373, 65.2478, 73.3456



58.1774, 65.2478, 62.3152

Square

The Square scheme is like the rectangle color scheme, but the four colors are evenly spaced on the color wheel.



67.1373, 65.2478, 73.3456



62.8147, 65.2478, 57.6986



57.1621, 65.2478, 68.7906



61.2243, 65.2478, 86.3026

Rectangle

The Rectangle color scheme consists of four colors that form a rectangle on the color wheel.



67.1373, 65.2478, 73.3456



65.9092, 65.2478, 61.9831



57.1621, 65.2478, 68.7906



58.2794, 65.2478, 80.9470

Sweetspot

The Sweet Spot groups the original color and five complimentary colors.



67.1392, 65.2507, 73.3470



90.9006, 93.2713, 102.6764



65.9186, 64.3558, 85.2924



19.2943, 19.7015, 21.7318



0.0000, 0.0000, 0.0000



20.3446, 21.4041, 23.3091

Same Dimension

The Same Dimension uses a secret algorithm to generate beautiful new colors.



67.1392, 65.2507, 73.3470



81.4039, 77.9813, 88.0937



66.4444, 66.0471, 66.3765



14.6102, 14.4613, 16.1479



19.5840, 9.9678, 6.7045



1.4918, 0.7544, 0.7303

Inverse Universe

The Inverse Universe completely reimagines the original color for something new.



67.1392, 65.2507, 73.3470



81.4039, 77.9813, 88.0937



67.5441, 74.8146, 87.2255



14.6102, 14.4613, 16.1479



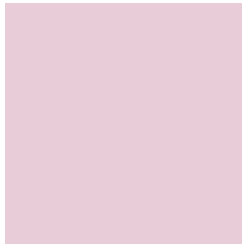
19.5840, 9.9678, 6.7045



1.4918, 0.7544, 0.7303

Previews

White Background



This preview shows how the XYZ color 67.1373, 65.2478, 73.3456 looks on a white background.

Color Contrast Check

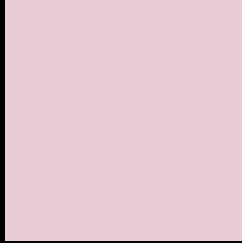
Large Text (above 18pt) WCAG AA × Fail

Any Text WCAG AA × Fail

Large Text (above 18pt) WCAG AAA × Fail

Any Text WCAG AAA × Fail

Black Background



This preview shows how the XYZ color 67.1373, 65.2478, 73.3456 looks on a black background.

Color Contrast Check

Large Text (above 18pt) WCAG AA ✓ Pass

Any Text WCAG AA ✓ Pass

Large Text (above 18pt) WCAG AAA ✓ Pass

Any Text WCAG AAA ✓ Pass

If you want to check with other color combinations, try the [Color Contrast Checker](#).

XYZ 67.1373, 65.2478, 73.3456

Background



This preview shows how black text looks on a background with the XYZ color 67.1373, 65.2478, 73.3456.



This preview shows how white text looks on a background with the XYZ color 67.1373, 65.2478,

Color Blindness Simulation

Color vision deficiency is a very complex topic, and I could not describe the different causes any better than Wikipedia does, so if you want to learn more, you should check out their [article about color blindness](#).

Dichromacy



Original Color

67.1373, 65.2478, 73.3456

Protanopia

63.2733, 65.3538, 76.2975

Deuteranopia

66.7302, 65.3919, 73.3948



Tritanopia

67.7464, 65.1500, 76.0224

Trichromacy



Original Color

67.1373, 65.2478, 73.3456

Protanomaly

64.7260, 65.3893, 75.5396

Deuteranomaly

67.0521, 65.5579, 73.4099

Tritanomaly

67.6151, 65.0975, 75.3310

Monochromacy



Original Color

67.1373, 65.2478, 73.3456

Achromatopsia

63.9157, 67.2443, 73.2291

Achromatomaly

65.0030, 66.3204, 72.9934

CSS Examples

Text

The CSS property to change the color of the text to XYZ 67.1373, 65.2478, 73.3456 is called "color". The color property can be set on classes, ids or directly on the HTML element.

This example shows how text in the color `rgb(232, 204, 215)` looks like.

```
.text, #text, p{  
    color:rgb(232, 204, 215)  
}
```

If you want to add a text shadow in that color use the text-shadow property, you can generate a text shadow directly with our [CSS Text Shadow Generator](#).

Here you see how black text with a 4 pixel rgb(232, 204, 215) colored shadow looks like.

```
.shadow{ text-shadow: 4px 4px 2px rgb(232, 204, 215) }
```

Border

The CSS property to change the border of an element to XYZ 67.1373, 65.2478, 73.3456 is called "border". The border property can be set on classes, ids or directly on the HTML element.

This example shows the color as border, it can be applied via the CSS property "border" or "border-color".

```
.border, #border, table{ border:4px solid rgb(232, 204, 215) }
```


If only the border color should be changed use the property `border-color`.

```
.border{ border-color:rgb(232, 204, 215) }
```

If you want to add a box shadow in that color use:

Here you see how a box with a 4 pixel `rgb(232, 204, 215)` colored shadow looks like.

```
.boxshadow{ -moz-box-shadow:4px 4px 4px  
4px rgb(232, 204, 215); -webkit-box-  
shadow:4px 4px 4px 4px rgb(232, 204, 215);  
box-shadow:4px 4px 4px 4px rgb(232, 204,  
215) }
```

Background

The CSS property to change the background color of an element to XYZ 67.1373, 65.2478, 73.3456 is called "background". The background property can be set on classes, ids or directly on the HTML element.

```
.background, #background, body{  
background: rgb(232, 204, 215) }
```

If only the background color should be changed can be used:

```
.background{ background-color: rgb(232,  
204, 215) }
```

This example shows the color as background, it is applied via the CSS property "background".

To optimize and compress your CSS code, you can use our [online CSS compressor and optimizer](#) based on csstidy. If you want to create a linear or radial gradient as background or border, check our [CSS Gradient Generator](#).

Hey! You found this booklet interesting? Support Converting Colors with the new Membership Option!

The pro membership hides all ads, plus gives you double the colors in the color bucket, and more awesome pro features!

[Learn more, Memberships starting at \\$2.50/m!](#)

**Follow me
on Twitter!**

@ConvertingColor