

Converting Colors

XYZ(67.1098, 67.3077, 72.4881)

Have a look what the booklet for
XYZ(67.1098, 67.3077, 72.4881)
contains.

XYZ(67.0517, 67.3913, 72.4246)	3
<i>Conversions</i>	4
<i>Details</i>	6
<i>Harmonies</i>	12
<i>Previews</i>	24
<i>Color Blindness Simulation</i>	28
<i>CSS Examples</i>	31

Color

**XYZ(67.0517, 67.3913,
72.4246)**

Conversions

Conversions Part 1

Format	Color
Hex	E4D2D5
RGB	228, 210, 213
RGB Percent	89%, 82%, 84%
CMY	0.1059, 0.1764, 0.1647
CMYK	0.00, 0.08, 0.07, 0.11
HSL	350°, 25%, 86%
HSV	350°, 8%, 89%
XYZ	67.0517, 67.3913, 72.4246
YIQ	215.7240, 9.7650, 4.7490

Conversions

Conversions Part 2

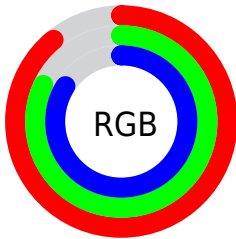
Format	Color
R_{YB}	228, 210, 213
Decimal	14996181
CIE Lab	85.70, 6.74, 0.76
CIE LCh	86, 6.779, 6.458
Yxy	67.3913, 0.3241, 0.3258
Android (android.graphics.Color)	4293186261 (0xFFE4D2D5)
YUV	215.7240, -1.3429, 10.7661
Hunter-Lab	82.0922, 2.1348, 5.1568

Details

The XYZ color **67.0517, 67.3913, 72.4246** is a light color, and the websafe version is hex **CCCCCC**. A complement of this color would be **67.9149, 74.6263, 82.0626**, and the grayscale version is **65.0883, 68.4779, 74.5725**.

A 20% lighter version of the original color is **95.0500, 100.0000, 108.9000**, and **35.2936, 35.1298, 37.2683** is the 20% darker color. If you saturate the color by 10%, you get **59.5464, 56.0170, 58.7112**, and if you desaturate by 10%, it is **75.6454, 80.4885, 87.8971**.

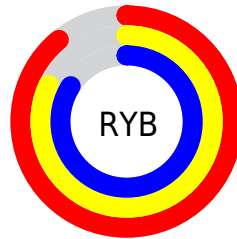
Distribution



Red (89%)

Green (82%)

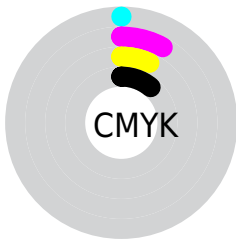
Blue (84%)



Red (89%)

Yellow (82%)

Blue (84%)

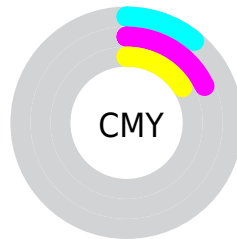


Cyan (0%)

Magenta (8%)

Yellow (7%)

Black (11%)



Cyan (11%)

Magenta (18%)

Yellow (16%)

Brightness & Saturation Gradients

These gradients show how the XYZ color 67.0517, 67.3913, 72.4246 changes by changing the brightness by 10 percent. The first figure shows a shift by +10% for each color and the second figure -10%.

Similar to the brightness gradients but the following saturation gradients show a change of the XYZ color 67.0517, 67.3913, 72.4246 by changing the saturation by 10% instead.

67.0517, 67.3913,
72.4246

67.0517, 67.3913,
72.4246

439.5584,
451.3363, 488.0353

49.3975, 49.4027,
53.0166

114.0439,
115.4809, 124.3733

35.1507, 34.9390,
37.4282

144.1126,
146.3507, 157.7512

23.9461, 23.6159,
25.2409

179.0501,
182.2831, 196.6228

15.4181, 15.0489,
16.0359

219.2219,
223.6623, 241.4066

9.2016, 8.8537,
9.3950

264.9932,
270.8729, 292.5213

4.9311, 4.6459,
4.8994

316.7295,

2.2412, 2.0410,

324.2991, 350.3852

2.1306

374.7961,
384.3255, 415.4171

■ 0.7643, 0.6312,
0.6339

■ 0.0000, 0.0000,
0.0000

■ 67.0517, 67.3913,
72.4246

■ 67.0517, 67.3913,
72.4246

■ 59.5464, 56.0170,
58.7112

■ 75.6454, 80.4885,
87.8971

■ 53.0805, 46.2853,
46.6900

■ 85.1694, 94.9798,
105.1192

■ 47.6094, 38.1228,
36.2965

■ 85.8052, 95.2341,
108.4674

■ 43.0831, 31.4472,
27.4601

■ 39.4474, 26.1683,
20.1051

■ 36.6422, 22.1866,
14.1494

■ 34.6001, 19.3889,
9.5026

■ 33.2426, 17.6426,
6.0635

■ 32.4646, 16.7653,
3.7119

Harmonies

Analogous

The Analogous color harmony consists of three colors that are next to each other on the color wheel.



66.8164, 67.3913, 76.8296



67.0517, 67.3913, 72.4246



66.4732, 67.3913, 68.4358

Triad

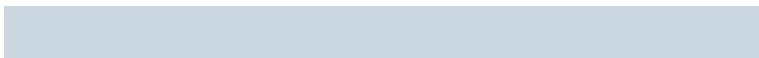
The Triadic color harmony groups three colors that are evenly spaced from another and form a triangle on the color wheel.



67.0517, 67.3913, 72.4246



62.3038, 67.3913, 66.7436



62.8738, 67.3913, 81.4594

Complementary

The Complementary color scheme is a pair of colors which are on the opposite of each other on the color wheel.



67.0517, 67.3913, 72.4246



67.9149, 74.6263, 82.0626

Split Complementary

Split-complementary colors differ from the complementary color scheme. The scheme consists of three colors, the original color and two neighbors of the complement color.



61.6930, 67.3913, 78.5519



67.0517, 67.3913, 72.4246



61.3676, 67.3913, 70.0307

Square

The Square scheme is like the rectangle color scheme, but the four colors are evenly spaced on the color wheel.



67.0517, 67.3913, 72.4246



63.7198, 67.3913, 65.2421



61.1459, 67.3913, 74.3391



64.3882, 67.3913, 82.1630

Rectangle

The Rectangle color scheme consists of four colors that form a rectangle on the color wheel.



67.0517, 67.3913, 72.4246



65.7094, 67.3913, 66.5106



61.1459, 67.3913, 74.3391



62.4255, 67.3913, 80.7019

Sweetspot

The Sweet Spot groups the original color and five complimentary colors.



67.0536, 67.3942, 72.4260



92.7676, 96.5183, 104.8000



68.1036, 67.7053, 82.8784



19.8800, 20.6953, 22.4745



0.0000, 0.0000, 0.0000



20.3446, 21.4041, 23.3091

Same Dimension

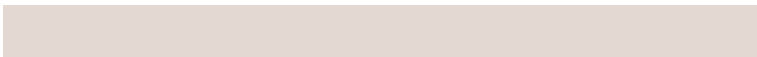
The Same Dimension uses a secret algorithm to generate beautiful new colors.



67.0536, 67.3942, 72.4260



85.2322, 85.0500, 91.1825



68.1857, 70.2614, 70.9444



14.4744, 14.4069, 15.4325



18.7058, 9.6165, 2.0797



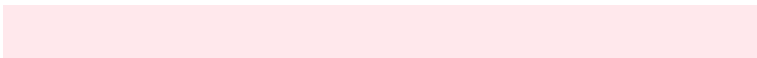
1.4118, 0.7224, 0.3088

Inverse Universe

The Inverse Universe completely reimagines the original color for something new.



67.0536, 67.3942, 72.4260



85.2322, 85.0500, 91.1825



66.7056, 71.5478, 83.6938



14.4744, 14.4069, 15.4325



18.7058, 9.6165, 2.0797



1.4118, 0.7224, 0.3088

Previews

White Background



This preview shows how the XYZ color 67.0517, 67.3913, 72.4246 looks on a white background.

Color Contrast Check

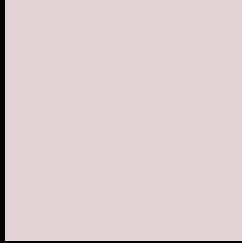
Large Text (above 18pt) WCAG AA × Fail

Any Text WCAG AA × Fail

Large Text (above 18pt) WCAG AAA × Fail

Any Text WCAG AAA × Fail

Black Background



This preview shows how the XYZ color 67.0517, 67.3913, 72.4246 looks on a black background.

Color Contrast Check

Large Text (above 18pt) WCAG AA ✓ Pass

Any Text WCAG AA ✓ Pass

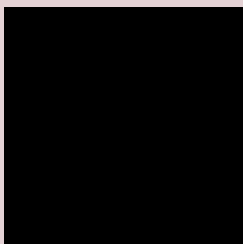
Large Text (above 18pt) WCAG AAA ✓ Pass

Any Text WCAG AAA ✓ Pass

If you want to check with other color combinations, try the [Color Contrast Checker](#).

XYZ 67.0517, 67.3913, 72.4246

Background



This preview shows how black text looks on a background with the XYZ color 67.0517, 67.3913, 72.4246.



This preview shows how white text looks on a background with the XYZ color 67.0517, 67.3913,

72.4246.

Color Blindness Simulation

Color vision deficiency is a very complex topic, and I could not describe the different causes any better than Wikipedia does, so if you want to learn more, you should check out their [article about color blindness](#).

Dichromacy



Original Color

67.0517, 67.3913, 72.4246

Protanopia

64.9734, 67.4002, 73.8751

Deuteranopia

68.7114, 67.1429, 72.9567



Tritanopia

68.7796, 67.3710, 80.6130

Trichromacy



Original Color

67.0517, 67.3913, 72.4246

Protanomaly

65.8053, 67.4716, 73.1733

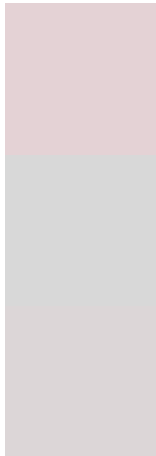
Deuteranomaly

67.9722, 67.1226, 72.9918

Tritanomaly

68.1647, 67.4794, 77.8388

Monochromacy



Original Color

67.0517, 67.3913, 72.4246

Achromatopsia

65.2694, 68.6685, 74.7800

Achromatomaly

65.8275, 68.2151, 73.9873

CSS Examples

Text

The CSS property to change the color of the text to XYZ 67.0517, 67.3913, 72.4246 is called "color". The color property can be set on classes, ids or directly on the HTML element.

This example shows how text in the color rgb(228, 210, 213) looks like.

```
.text, #text, p{  
    color:rgb(228, 210, 213)  
}
```

If you want to add a text shadow in that color use the text-shadow property, you can generate a text shadow directly with our [CSS Text Shadow Generator](#).

Here you see how black text with a 4 pixel rgb(228, 210, 213) colored shadow looks like.

```
.shadow{ text-shadow: 4px 4px 2px rgb(228, 210, 213) }
```

Border

The CSS property to change the border of an element to XYZ 67.0517, 67.3913, 72.4246 is called "border". The border property can be set on classes, ids or directly on the HTML element.

This example shows the color as border, it can be applied via the CSS property "border" or "border-color".

```
.border, #border, table{ border:4px solid rgb(228, 210, 213) }
```


If only the border color should be changed use the property `border-color`.

```
.border{ border-color:rgb(228, 210, 213) }
```

If you want to add a box shadow in that color use:

Here you see how a box with a 4 pixel `rgb(228, 210, 213)` colored shadow looks like.

```
.boxshadow{ -moz-box-shadow:4px 4px 4px  
4px rgb(228, 210, 213); -webkit-box-  
shadow:4px 4px 4px 4px rgb(228, 210, 213);  
box-shadow:4px 4px 4px 4px rgb(228, 210,  
213) }
```

Background

The CSS property to change the background color of an element to XYZ 67.0517, 67.3913, 72.4246 is called "background". The background property can be set on classes, ids or directly on the HTML element.

```
.background, #background, body{  
background: rgb(228, 210, 213) }
```

If only the background color should be changed can be used:

```
.background{ background-color: rgb(228,  
210, 213) }
```

This example shows the color as background, it is applied via the CSS property "background".

To optimize and compress your CSS code, you can use our [online CSS compressor and optimizer](#) based on csstidy. If you want to create a linear or radial gradient as background or border, check our [CSS Gradient Generator](#).

Hey! You found this booklet interesting? Support Converting Colors with the new Membership Option!

The pro membership hides all ads, plus gives you double the colors in the color bucket, and more awesome pro features!

[Learn more, Memberships starting at \\$2.50/m!](#)

**Follow me
on Twitter!**

@ConvertingColor