

# Converting Colors

XYZ(67.2050, 66.9533, 76.4500)

Have a look what the booklet for  
XYZ(67.2050, 66.9533, 76.4500)  
contains.

<b>XYZ(67.2652, 67.0463, 76.4138)</b> .....	3
<b><i>Conversions</i></b> .....	4
<b><i>Details</i></b> .....	6
<b><i>Harmonies</i></b> .....	12
<b><i>Previews</i></b> .....	24
<b><i>Color Blindness Simulation</i></b> .....	28
<b><i>CSS Examples</i></b> .....	31

# Color

**XYZ(67.2652, 67.0463,  
76.4138)**

# Conversions

## Conversions Part 1

Format	Color
Hex	E3D1DB
RGB	227, 209, 219
RGB Percent	89%, 82%, 86%
CMY	0.1098, 0.1804, 0.1412
CMYK	0.00, 0.08, 0.04, 0.11
HSL	327°, 24%, 85%
HSV	327°, 8%, 89%
XYZ	67.2652, 67.0463, 76.4138
YIQ	215.5220, 7.5180, 6.9260

# Conversions

## Conversions Part 2

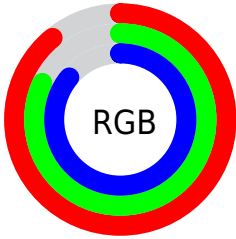
Format	Color
R <sub>Y</sub> B	227, 209, 219
Decimal	14930395
CIE Lab	85.53, 7.96, -2.69
CIE LCh	86, 8.398, 341.350
Yxy	67.0463, 0.3192, 0.3182
Android (android.graphics.Color)	4293120475 (0xFFE3D1DB)
YUV	215.5220, 1.7147, 10.0662
Hunter-Lab	81.8818, 3.3431, 1.9866

# Details

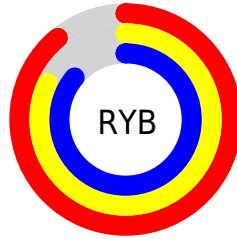
The XYZ color **67.2652, 67.0463, 76.4138** is a light color, and the websafe version is hex **CCCCCC**. A complement of this color would be **66.2905, 73.5050, 76.3432**, and the grayscale version is **64.9320, 68.3135, 74.3934**.

A 20% lighter version of the original color is **95.0500, 100.0000, 108.9000**, and **35.4354, 34.8937, 39.9895** is the 20% darker color. If you saturate the color by 10%, you get **60.7998, 56.1767, 67.9021**, and if you desaturate by 10%, it is **74.6085, 79.5410, 85.6171**.

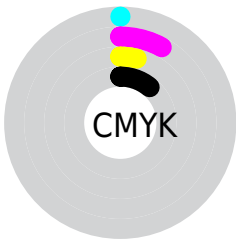
# Distribution



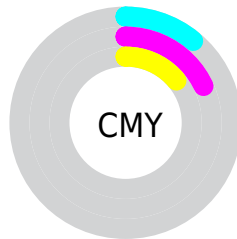
- Red (89%)
- Green (82%)
- Blue (86%)



- Red (89%)
- Yellow (82%)
- Blue (86%)



- Cyan (0%)
- Magenta (8%)
- Yellow (4%)
- Black (11%)



- Cyan (11%)
- Magenta (18%)
- Yellow (14%)

# Brightness & Saturation Gradients

These gradients show how the XYZ color 67.2652, 67.0463, 76.4138 changes by changing the brightness by 10 percent. The first figure shows a shift by +10% for each color and the second figure -10%.

Similar to the brightness gradients but the following saturation gradients show a change of the XYZ color 67.2652, 67.0463, 76.4138 by changing the saturation by 10% instead.



67.2652, 67.0463,  
76.4138

67.2652, 67.0463,  
76.4138

440.3058,  
450.1096, 502.1475

49.5717, 49.1223,  
56.2632

114.3480,  
114.9868, 130.0771

35.2896, 34.7165,  
40.0086

144.4680,  
145.7719, 164.4269

24.0536, 23.4446,  
27.2314

179.4609,  
181.6130, 204.3468

15.4983, 14.9221,  
17.5131

219.6920,  
222.8943, 250.2554

9.2584, 8.7647,  
10.4352

265.5267,  
270.0001, 302.5713

4.9686, 4.5880,  
5.5791

317.3303,

2.2634, 2.0076,

323.3151, 361.7129

2.5263

375.4683,  
383.2234, 428.0988

■ 0.7758, 0.6119,  
0.8540

■ 0.0000, 0.0000,  
0.0000

■ 67.2652, 67.0463,  
76.4138

■ 67.2652, 67.0463,  
76.4138

■ 60.7998, 56.1767,  
67.9021

■ 74.6085, 79.5410,  
85.6171

■ 55.1717, 46.8560,  
60.0591

■ 82.8568, 93.7153,  
95.5255

■ 50.3457, 39.0152,  
52.8667

■ 84.5807, 94.7078,  
103.6699

■ 46.2816, 32.5763,  
46.3042

■ 85.4890, 95.0711,  
108.4526

■ 42.9357, 27.4543,  
40.3493

■ 40.2595, 23.5549,  
34.9781

■ 38.1982, 20.7709,  
30.1641

■ 36.6875, 18.9765,  
25.8776

■ 35.6383, 17.9965,  
22.0802

# Harmonies

## Analogous

The Analogous color harmony consists of three colors that are next to each other on the color wheel.



66.1802, 67.0463, 81.1770



67.2652, 67.0463, 76.4138



67.3906, 67.0463, 70.9536

# Triad

The Triadic color harmony groups three colors that are evenly spaced from another and form a triangle on the color wheel.



67.2652, 67.0463, 76.4138



63.0062, 67.0463, 63.1774



61.0109, 67.0463, 80.1660

# Complementary

The Complementary color scheme is a pair of colors which are on the opposite of each other on the color wheel.



67.2652, 67.0463, 76.4138



66.2905, 73.5050, 76.3432

# Split Complementary

Split-complementary colors differ from the complementary color scheme. The scheme consists of three colors, the original color and two neighbors of the complement color.



60.1957, 67.0463, 75.0895



67.2652, 67.0463, 76.4138



61.3323, 67.0463, 65.3952

# Square

The Square scheme is like the rectangle color scheme, but the four colors are evenly spaced on the color wheel.



67.2652, 67.0463, 76.4138



64.9059, 67.0463, 63.4924



60.3122, 67.0463, 69.6933



62.5595, 67.0463, 83.4168



# Rectangle

The Rectangle color scheme consists of four colors that form a rectangle on the color wheel.



67.2652, 67.0463, 76.4138



66.9103, 67.0463, 67.6708



60.3122, 67.0463, 69.6933



60.6434, 67.0463, 78.6061

# Sweetspot

The Sweet Spot groups the original color and five complimentary colors.



67.2671, 67.0492, 76.4152



93.0816, 96.6439, 106.4537



65.2240, 65.8713, 81.9508



19.9439, 20.7209, 22.8112



0.0000, 0.0000, 0.0000



20.3446, 21.4041, 23.3091



# Same Dimension

The Same Dimension uses a secret algorithm to generate beautiful new colors.



67.2671, 67.0492, 76.4152



85.6761, 84.0870, 97.0357



66.1392, 66.5980, 70.4756



14.7104, 14.5014, 16.6755



20.7343, 10.4280, 12.7620



1.5788, 0.7892, 1.1885



# Inverse Universe

The Inverse Universe completely reimagines the original color for something new.



67.2671, 67.0492, 76.4152



85.6761, 84.0870, 97.0357



67.4657, 73.9751, 82.5316



14.7104, 14.5014, 16.6755



20.7343, 10.4280, 12.7620

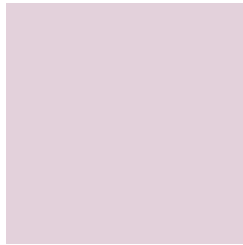


1.5788, 0.7892, 1.1885



# Previews

## White Background



This preview shows how the XYZ color 67.2652, 67.0463, 76.4138 looks on a white background.

## Color Contrast Check

Large Text (above 18pt) WCAG AA × Fail

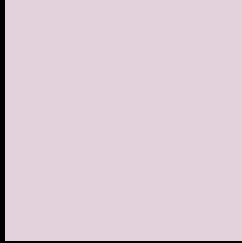
Any Text WCAG AA × Fail

Large Text (above 18pt) WCAG AAA × Fail

Any Text WCAG AAA × Fail



# Black Background



This preview shows how the XYZ color 67.2652, 67.0463, 76.4138 looks on a black background.

## Color Contrast Check

Large Text (above 18pt) WCAG AA ✓ Pass

Any Text WCAG AA ✓ Pass

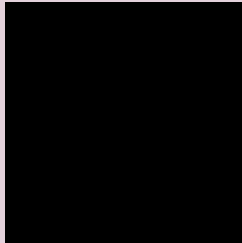
Large Text (above 18pt) WCAG AAA ✓ Pass

Any Text WCAG AAA ✓ Pass

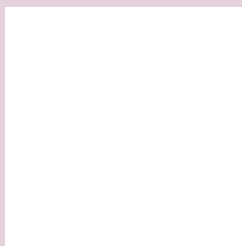
If you want to check with other color combinations, try the [Color Contrast Checker](#).

**XYZ 67.2652, 67.0463, 76.4138**

## **Background**



This preview shows how black text looks on a background with the XYZ color 67.2652, 67.0463, 76.4138.



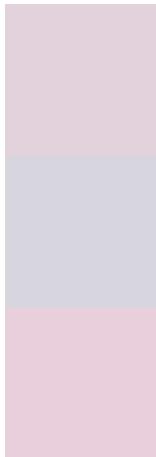
This preview shows how white text looks on a background with the XYZ color 67.2652, 67.0463,



# Color Blindness Simulation

Color vision deficiency is a very complex topic, and I could not describe the different causes any better than Wikipedia does, so if you want to learn more, you should check out their [article about color blindness](#).

## Dichromacy



### Original Color

67.2652, 67.0463, 76.4138

### Protanopia

64.8697, 67.2560, 77.9693

### Deuteranopia

68.3777, 66.8959, 76.3261



## Tritanopia

68.0053, 66.9875, 79.8666

# Trichromacy



## Original Color

67.2652, 67.0463, 76.4138

## Protanomaly

65.6752, 67.3143, 77.2417

## Deuteranomaly

67.9752, 67.0492, 76.3769

## Tritanomaly

67.7356, 66.8797, 78.4463

# Monochromacy



## Original Color

67.2652, 67.0463, 76.4138

## Achromatopsia

65.2694, 68.6685, 74.7800

## Achromatomaly

65.8338, 67.8139, 75.2652

# CSS Examples

## Text

The CSS property to change the color of the text to XYZ 67.2652, 67.0463, 76.4138 is called "color". The color property can be set on classes, ids or directly on the HTML element.

This example shows how text in the color `rgb(227, 209, 219)` looks like.

```
.text, #text, p{  
    color:rgb(227, 209, 219)  
}
```

If you want to add a text shadow in that color use the text-shadow property, you can generate a text shadow directly with our [CSS Text Shadow Generator](#).

Here you see how black text with a 4 pixel rgb(227, 209, 219) colored shadow looks like.

```
.shadow{ text-shadow: 4px 4px 2px rgb(227, 209, 219) }
```

## Border

The CSS property to change the border of an element to XYZ 67.2652, 67.0463, 76.4138 is called "border". The border property can be set on classes, ids or directly on the HTML element.

This example shows the color as border, it can be applied via the CSS property "border" or "border-color".

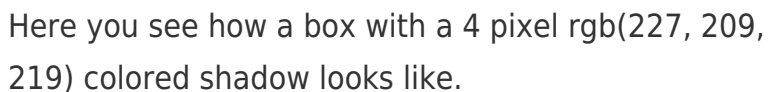
```
.border, #border, table{ border:4px solid rgb(227, 209, 219) }
```



If only the border color should be changed use the property `border-color`.

```
.border{ border-color:rgb(227, 209, 219) }
```

If you want to add a box shadow in that color use:



Here you see how a box with a 4 pixel `rgb(227, 209, 219)` colored shadow looks like.

```
.boxshadow{ -moz-box-shadow:4px 4px 4px 4px rgb(227, 209, 219); -webkit-box-shadow:4px 4px 4px 4px rgb(227, 209, 219); box-shadow:4px 4px 4px 4px rgb(227, 209, 219) }
```

# Background

The CSS property to change the background color of an element to XYZ 67.2652, 67.0463, 76.4138 is called "background". The background property can be set on classes, ids or directly on the HTML element.

```
.background, #background, body{  
background: rgb(227, 209, 219) }
```

If only the background color should be changed can be used:

```
.background{ background-color: rgb(227,  
209, 219) }
```

This example shows the color as background, it is applied via the CSS property "background".

To optimize and compress your CSS code, you can use our [online CSS compressor and optimizer](#) based on csstidy. If you want to create a linear or radial gradient as background or border, check our [CSS Gradient Generator](#).

Hey! You found this booklet interesting? Support Converting Colors with the new Membership Option!

The pro membership hides all ads, plus gives you double the colors in the color bucket, and more awesome pro features!

**[Learn more, Memberships starting at \\$2.50/m!](#)**

**Follow me  
on Twitter!**

@ConvertingColor