

Converting Colors

XYZ(67.2337, 66.0519, 71.4930)

Have a look what the booklet for
XYZ(67.2337, 66.0519, 71.4930)
contains.

XYZ(67.2337, 66.0519, 71.4930)	3
<i>Conversions</i>	4
<i>Details</i>	6
<i>Harmonies</i>	12
<i>Previews</i>	24
<i>Color Blindness Simulation</i>	28
<i>CSS Examples</i>	31

Color

**XYZ(67.2337, 66.0519,
71.4930)**

Conversions

Conversions Part 1

Format	Color
Hex	E8CED4
RGB	232, 206, 212
RGB Percent	91%, 81%, 83%
CMY	0.0902, 0.1921, 0.1686
CMYK	0.00, 0.11, 0.09, 0.09
HSL	346°, 36%, 86%
HSV	346°, 11%, 91%
XYZ	67.2337, 66.0519, 71.4930
YIQ	214.4580, 13.5700, 7.3780

Conversions

Conversions Part 2

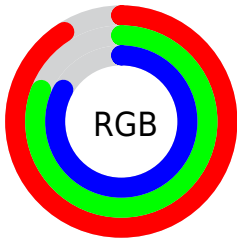
Format	Color
R _Y B	232, 206, 212
Decimal	15257300
CIE Lab	85.02, 10.06, 0.34
CIE LCh	85, 10.068, 1.963
Yxy	66.0519, 0.3283, 0.3226
Android (android.graphics.Color)	4293447380 (0xFFE8CED4)
YUV	214.4580, -1.2118, 15.3843
Hunter-Lab	81.2723, 5.4401, 4.7349

Details

The XYZ color **67.2337, 66.0519, 71.4930** is a light color, and the websafe version is hex **FFCCCC**. A complement of this color would be **68.0403, 76.3278, 83.1020**, and the grayscale version is **64.2281, 67.5730, 73.5870**.

A 20% lighter version of the original color is **95.0500, 100.0000, 108.9000**, and **35.2185, 34.1209, 36.6281** is the 20% darker color. If you saturate the color by 10%, you get **59.9272, 54.8446, 58.5562**, and if you desaturate by 10%, it is **75.6173, 79.0133, 86.0185**.

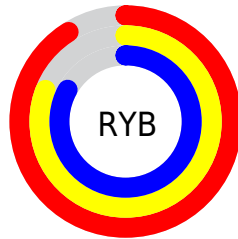
Distribution



Red (91%)

Green (81%)

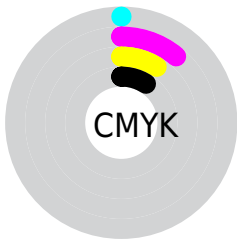
Blue (83%)



Red (91%)

Yellow (81%)

Blue (83%)

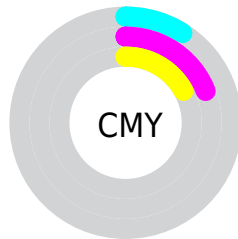


Cyan (0%)

Magenta (11%)

Yellow (9%)

Black (9%)



Cyan (9%)

Magenta (19%)

Yellow (17%)

Brightness & Saturation Gradients

These gradients show how the XYZ color 67.2337, 66.0519, 71.4930 changes by changing the brightness by 10 percent. The first figure shows a shift by +10% for each color and the second figure -10%.

Similar to the brightness gradients but the following saturation gradients show a change of the XYZ color 67.2337, 66.0519, 71.4930 by changing the saturation by 10% instead.

67.2337, 66.0519,
71.4930

67.2337, 66.0519,
71.4930

440.1956,
446.5625, 484.7050

49.5460, 48.3145,
52.2603

114.3032,
113.5608, 123.0364

35.2691, 34.0760,
36.8289

144.4156,
144.1012, 156.1843

24.0377, 22.9520,
24.7803

179.4003,
179.6780, 194.8076

15.4865, 14.5581,
15.6959

219.6227,
220.6756, 239.3249

9.2501, 8.5098,
9.1572

265.4480,
267.4785, 290.1548

4.9631, 4.4229,
4.7457

317.2417,

2.2601, 1.9128,

320.4710, 347.7157

2.0427

375.3691,
380.0375, 412.4263

■ 0.7741, 0.5561,
0.5814

■ 0.0000, 0.0000,
0.0000

■ 67.2337, 66.0519,
71.4930

■ 67.2337, 66.0519,
71.4930

■ 59.9272, 54.8446,
58.5562

■ 75.6173, 79.0133,
86.0185

■ 53.6481, 45.3076,
47.1494

■ 85.1137, 93.7906,
102.1801

■ 48.3512, 37.3630,
37.2165

■ 87.0891, 95.8960,
108.5274

■ 43.9855, 30.9234,
28.6960

■ 40.4956, 25.8931,
21.5224

■ 37.8197, 22.1651,
15.6245

■ 35.8878, 19.6171,
10.9242

■ 34.6171, 18.1030,
7.3340

■ 33.9335, 17.4178,
5.0035

Harmonies

Analogous

The Analogous color harmony consists of three colors that are next to each other on the color wheel.



66.7028, 66.0519, 77.9420



67.2337, 66.0519, 71.4930



66.5477, 66.0519, 65.5174

Triad

The Triadic color harmony groups three colors that are evenly spaced from another and form a triangle on the color wheel.



67.2337, 66.0519, 71.4930



60.5033, 66.0519, 61.8492



60.7557, 66.0519, 83.4980

Complementary

The Complementary color scheme is a pair of colors which are on the opposite of each other on the color wheel.



67.2337, 66.0519, 71.4930



68.0403, 76.3278, 83.1020

Split Complementary

Split-complementary colors differ from the complementary color scheme. The scheme consists of three colors, the original color and two neighbors of the complement color.



59.1580, 66.0519, 78.7252



67.2337, 66.0519, 71.4930



59.0147, 66.0519, 66.2151

Square

The Square scheme is like the rectangle color scheme, but the four colors are evenly spaced on the color wheel.



67.2337, 66.0519, 71.4930



62.6313, 66.0519, 60.1616



58.5281, 66.0519, 72.3473



62.9296, 66.0519, 85.1170

Rectangle

The Rectangle color scheme consists of four colors that form a rectangle on the color wheel.



67.2337, 66.0519, 71.4930



65.5019, 66.0519, 62.5373



58.5281, 66.0519, 72.3473



60.1352, 66.0519, 82.1957

Sweetspot

The Sweet Spot groups the original color and five complimentary colors.



67.2356, 66.0548, 71.4944



91.7246, 94.8425, 103.1882



67.9821, 66.1299, 85.5261



19.4472, 20.0126, 21.7664



0.0000, 0.0000, 0.0000



20.3446, 21.4041, 23.3091

Same Dimension

The Same Dimension uses a secret algorithm to generate beautiful new colors.



67.2356, 66.0548, 71.4944



81.5337, 79.1078, 85.4644



68.1989, 69.1697, 68.1527



14.5125, 14.4222, 15.6332



18.8783, 9.6855, 2.9880



1.4302, 0.7298, 0.4058

Inverse Universe

The Inverse Universe completely reimagines the original color for something new.



67.2356, 66.0548, 71.4944



81.5337, 79.1078, 85.4644



66.9647, 72.8366, 86.8742



14.5125, 14.4222, 15.6332



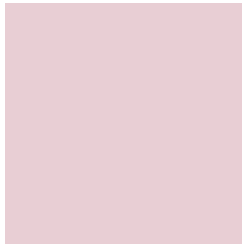
18.8783, 9.6855, 2.9880



1.4302, 0.7298, 0.4058

Previews

White Background



This preview shows how the XYZ color 67.2337, 66.0519, 71.4930 looks on a white background.

Color Contrast Check

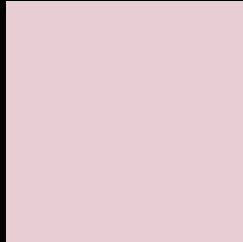
Large Text (above 18pt) WCAG AA × Fail

Any Text WCAG AA × Fail

Large Text (above 18pt) WCAG AAA × Fail

Any Text WCAG AAA × Fail

Black Background



This preview shows how the XYZ color 67.2337, 66.0519, 71.4930 looks on a black background.

Color Contrast Check

Large Text (above 18pt) WCAG AA ✓ Pass

Any Text WCAG AA ✓ Pass

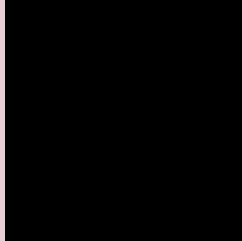
Large Text (above 18pt) WCAG AAA ✓ Pass

Any Text WCAG AAA ✓ Pass

If you want to check with other color combinations, try the [Color Contrast Checker](#).

XYZ 67.2337, 66.0519, 71.4930

Background



This preview shows how black text looks on a background with the XYZ color 67.2337, 66.0519, 71.4930.



This preview shows how white text looks on a background with the XYZ color 67.2337, 66.0519,

71.4930.

Color Blindness Simulation

Color vision deficiency is a very complex topic, and I could not describe the different causes any better than Wikipedia does, so if you want to learn more, you should check out their [article about color blindness](#).

Dichromacy



Original Color

67.2337, 66.0519, 71.4930

Protanopia

63.5843, 65.9419, 73.6668

Deuteranopia

67.5592, 66.2197, 71.5083



Tritanopia

68.4867, 66.2067, 77.5762

Trichromacy



Original Color

67.2337, 66.0519, 71.4930

Protanomaly

64.7569, 65.8281, 72.9114

Deuteranomaly

67.5592, 66.2197, 71.5083

Tritanomaly

68.0905, 66.0482, 75.4895

Monochromacy



Original Color

67.2337, 66.0519, 71.4930

Achromatopsia

63.9157, 67.2443, 73.2291

Achromatomaly

65.1233, 66.7648, 72.4053

CSS Examples

Text

The CSS property to change the color of the text to XYZ 67.2337, 66.0519, 71.4930 is called "color". The color property can be set on classes, ids or directly on the HTML element.

This example shows how text in the color `rgb(232, 206, 212)` looks like.

```
.text, #text, p{  
    color:rgb(232, 206, 212)  
}
```

If you want to add a text shadow in that color use the text-shadow property, you can generate a text shadow directly with our [CSS Text Shadow Generator](#).

Here you see how black text with a 4 pixel rgb(232, 206, 212) colored shadow looks like.

```
.shadow{ text-shadow: 4px 4px 2px rgb(232, 206, 212) }
```

Border

The CSS property to change the border of an element to XYZ 67.2337, 66.0519, 71.4930 is called "border". The border property can be set on classes, ids or directly on the HTML element.

This example shows the color as border, it can be applied via the CSS property "border" or "border-color".

```
.border, #border, table{ border:4px solid rgb(232, 206, 212) }
```


If only the border color should be changed use the property `border-color`.

```
.border{ border-color:rgb(232, 206, 212) }
```

If you want to add a box shadow in that color use:

Here you see how a box with a 4 pixel `rgb(232, 206, 212)` colored shadow looks like.

```
.boxshadow{ -moz-box-shadow:4px 4px 4px  
4px rgb(232, 206, 212); -webkit-box-  
shadow:4px 4px 4px 4px rgb(232, 206, 212);  
box-shadow:4px 4px 4px 4px rgb(232, 206,  
212) }
```

Background

The CSS property to change the background color of an element to XYZ 67.2337, 66.0519, 71.4930 is called "background". The background property can be set on classes, ids or directly on the HTML element.

```
.background, #background, body{  
background: rgb(232, 206, 212) }
```

If only the background color should be changed can be used:

```
.background{ background-color: rgb(232,  
206, 212) }
```

This example shows the color as background, it is applied via the CSS property "background".

To optimize and compress your CSS code, you can use our [online CSS compressor and optimizer](#) based on csstidy. If you want to create a linear or radial gradient as background or border, check our [CSS Gradient Generator](#).

Hey! You found this booklet interesting? Support Converting Colors with the new Membership Option!

The pro membership hides all ads, plus gives you double the colors in the color bucket, and more awesome pro features!

[Learn more, Memberships starting at \\$2.50/m!](#)

**Follow me
on Twitter!**

@ConvertingColor