

Converting Colors

XYZ(67.2422, 67.9743, 67.5430)

Have a look what the booklet for
XYZ(67.2422, 67.9743, 67.5430)
contains.

XYZ(67.2687, 67.9852, 67.3346)	3
<i>Conversions</i>	4
<i>Details</i>	6
<i>Harmonies</i>	12
<i>Previews</i>	24
<i>Color Blindness Simulation</i>	28
<i>CSS Examples</i>	31

Color

**XYZ(67.2687, 67.9852,
67.3346)**

Conversions

Conversions Part 1

Format	Color
Hex	E7D3CD
RGB	231, 211, 205
RGB Percent	91%, 83%, 80%
CMY	0.0941, 0.1725, 0.1961
CMYK	0.00, 0.09, 0.11, 0.09
HSL	14°, 35%, 85%
HSV	14°, 11%, 91%
XYZ	67.2687, 67.9852, 67.3346
YIQ	216.2960, 13.8460, 2.3740

Conversions

Conversions Part 2

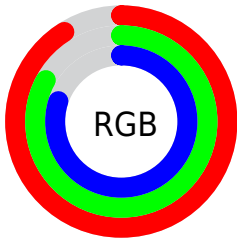
Format	Color
RYB	231, 213, 205
Decimal	15193037
CIELab	86.00, 5.93, 5.47
CIELCh	86, 8.066, 42.660
Yxy	67.9852, 0.3320, 0.3356
Android (android.graphics.Color)	4293383117 (0xFFE7D3CD)
YUV	216.2960, -5.5689, 12.8954
Hunter-Lab	82.4531, 1.3347, 9.2986

Details

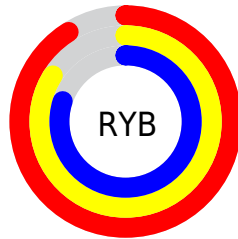
The XYZ color **67.2687, 67.9852, 67.3346** is a light color, and the websafe version is hex **CCCCCC**. A complement of this color would be **66.5256, 72.5977, 86.1085**, and the grayscale version is **65.5038, 68.9150, 75.0485**.

A 20% lighter version of the original color is **95.0500, 100.0000, 108.9000**, and **35.3221, 35.4623, 34.2614** is the 20% darker color. If you saturate the color by 10%, you get **60.5117, 58.6085, 52.3258**, and if you desaturate by 10%, it is **74.9291, 78.5082, 84.6772**.

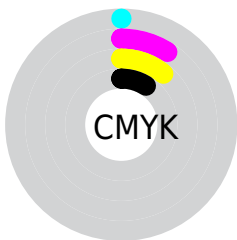
Distribution



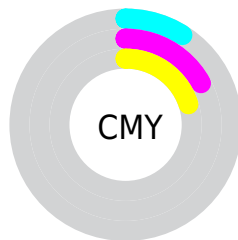
- Red (91%)
- Green (83%)
- Blue (80%)



- Red (91%)
- Yellow (84%)
- Blue (80%)



- Cyan (0%)
- Magenta (9%)
- Yellow (11%)
- Black (9%)



- Cyan (9%)
- Magenta (17%)
- Yellow (20%)

Brightness & Saturation Gradients

These gradients show how the XYZ color 67.2687, 67.9852, 67.3346 changes by changing the brightness by 10 percent. The first figure shows a shift by +10% for each color and the second figure -10%.

Similar to the brightness gradients but the following saturation gradients show a change of the XYZ color 67.2687, 67.9852, 67.3346 by changing the saturation by 10% instead.

67.2687, 67.9852,
67.3346

67.2687, 67.9852,
67.3346

440.3181,
453.4436, 469.6687

49.5745, 49.8857,
48.8933

114.3530,
116.3310, 117.0449

35.2919, 35.3226,
34.1698

144.4739,
147.3460, 149.1510

24.0553, 23.9115,
22.7457

179.4677,
183.4351, 186.6491

15.4996, 15.2680,
14.2023

219.6997,
224.9824, 229.9578

9.2594, 9.0077,
8.1211

265.5355,
272.3726, 279.4955

4.9692, 4.7462,
4.0837

317.3402,

2.2638, 2.0991,

325.9899, 335.6809

1.6714

375.4793,
386.2188, 398.9325

■ 0.7760, 0.6641,
0.3410

■ 0.0000, 0.0000,
0.0000

■ 67.2687, 67.9852,
67.3346

■ 67.2687, 67.9852,
67.3346

■ 60.5117, 58.6085,
52.3258

■ 74.9291, 78.5082,
84.6772

■ 54.6185, 50.3303,
39.5466

■ 83.5190, 90.2054,
104.4430

■ 49.5552, 43.1126,
28.8911

■ 86.7653, 95.7291,
108.5123

■ 45.2833, 36.9119,
20.2433

■ 41.7609, 31.6814,
13.4760

■ 38.9424, 27.3709,
8.4471

■ 36.7765, 23.9249,
4.9942

■ 35.2041, 21.2818,
2.9236

■ 34.2442, 19.5668,
1.9719

Harmonies

Analogous

The Analogous color harmony consists of three colors that are next to each other on the color wheel.



68.1503, 67.9852, 71.8145



67.2687, 67.9852, 67.3346



65.6837, 67.9852, 64.7213

Triad

The Triadic color harmony groups three colors that are evenly spaced from another and form a triangle on the color wheel.



67.2687, 67.9852, 67.3346



61.2822, 67.9852, 71.0299



65.4005, 67.9852, 84.4134

Complementary

The Complementary color scheme is a pair of colors which are on the opposite of each other on the color wheel.



67.2687, 67.9852, 67.3346



66.5256, 72.5977, 86.1085

Split Complementary

Split-complementary colors differ from the complementary color scheme. The scheme consists of three colors, the original color and two neighbors of the complement color.



63.5637, 67.9852, 84.1786



67.2687, 67.9852, 67.3346



61.2097, 67.9852, 76.2791

Square

The Square scheme is like the rectangle color scheme, but the four colors are evenly spaced on the color wheel.



67.2687, 67.9852, 67.3346



62.2377, 67.9852, 66.7839



62.0377, 67.9852, 81.1431



67.0580, 67.9852, 81.7700

Rectangle

The Rectangle color scheme consists of four colors that form a rectangle on the color wheel.



67.2687, 67.9852, 67.3346



64.4530, 67.9852, 64.3090



62.0377, 67.9852, 81.1431



64.7831, 67.9852, 84.6719

Sweetspot

The Sweet Spot groups the original color and five complimentary colors.



67.2706, 67.9882, 67.3360



91.9943, 95.8205, 101.9257



68.4279, 66.1088, 80.6512



19.5196, 20.2753, 21.4273



0.0000, 0.0000, 0.0000



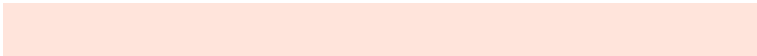
20.3446, 21.4041, 23.3091

Same Dimension

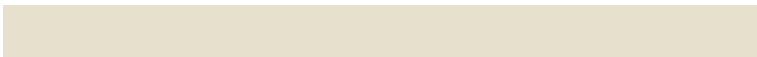
The Same Dimension uses a secret algorithm to generate beautiful new colors.



67.2706, 67.9882, 67.3360



81.6839, 81.6266, 78.6754



70.5325, 74.5120, 68.4233



14.6457, 14.9053, 15.0096



19.2756, 11.1254, 1.1315



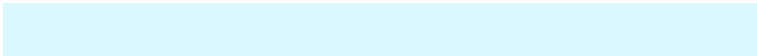
1.4940, 0.9614, 0.1068

Inverse Universe

The Inverse Universe completely reimagines the original color for something new.



66.5256, 72.5977, 86.1085



80.5399, 88.6990, 107.4834



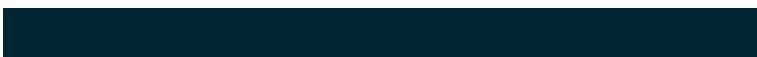
63.2368, 66.0201, 85.0123



14.5105, 15.7424, 18.4181



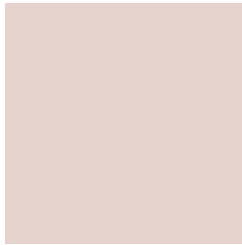
17.0716, 21.2054, 45.5764



1.3304, 1.7047, 3.3909

Previews

White Background



This preview shows how the XYZ color 67.2687, 67.9852, 67.3346 looks on a white background.

Color Contrast Check

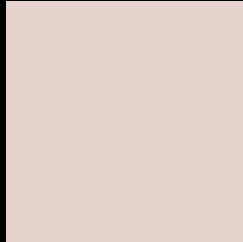
Large Text (above 18pt) WCAG AA × Fail

Any Text WCAG AA × Fail

Large Text (above 18pt) WCAG AAA × Fail

Any Text WCAG AAA × Fail

Black Background



This preview shows how the XYZ color 67.2687, 67.9852, 67.3346 looks on a black background.

Color Contrast Check

Large Text (above 18pt) WCAG AA ✓ Pass

Any Text WCAG AA ✓ Pass

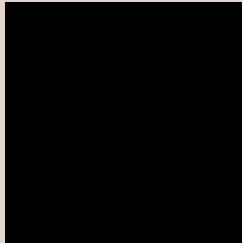
Large Text (above 18pt) WCAG AAA ✓ Pass

Any Text WCAG AAA ✓ Pass

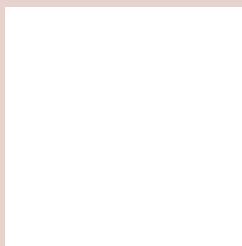
If you want to check with other color combinations, try the [Color Contrast Checker](#).

XYZ 67.2687, 67.9852, 67.3346

Background



This preview shows how black text looks on a background with the XYZ color 67.2687, 67.9852, 67.3346.



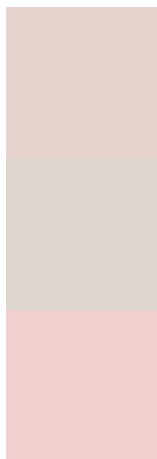
This preview shows how white text looks on a background with the XYZ color 67.2687, 67.9852,

67.3346.

Color Blindness Simulation

Color vision deficiency is a very complex topic, and I could not describe the different causes any better than Wikipedia does, so if you want to learn more, you should check out their [article about color blindness](#).

Dichromacy



Original Color

67.2687, 67.9852, 67.3346

Protanopia

65.1278, 67.9703, 68.7185

Deuteranopia

69.2931, 67.9187, 67.8500



Tritanopia

69.9421, 67.9860, 79.9573

Trichromacy



Original Color

67.2687, 67.9852, 67.3346

Protanomaly

65.9862, 68.0523, 68.0501

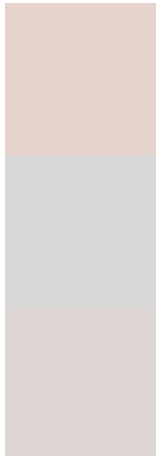
Deuteranomaly

68.5331, 67.8900, 67.8845

Tritanomaly

68.9291, 67.9343, 75.1253

Monochromacy



Original Color

67.2687, 67.9852, 67.3346

Achromatopsia

65.2694, 68.6685, 74.7800

Achromatomaly

65.7490, 68.2188, 71.9895

CSS Examples

Text

The CSS property to change the color of the text to XYZ 67.2687, 67.9852, 67.3346 is called "color". The color property can be set on classes, ids or directly on the HTML element.

This example shows how text in the color rgb(231, 211, 205) looks like.

```
.text, #text, p{  
    color:rgb(231, 211, 205)  
}
```

If you want to add a text shadow in that color use the text-shadow property, you can generate a text shadow directly with our [CSS Text Shadow Generator](#).

Here you see how black text with a 4 pixel rgb(231, 211, 205) colored shadow looks like.

```
.shadow{ text-shadow: 4px 4px 2px rgb(231, 211, 205) }
```

Border

The CSS property to change the border of an element to XYZ 67.2687, 67.9852, 67.3346 is called "border". The border property can be set on classes, ids or directly on the HTML element.

This example shows the color as border, it can be applied via the CSS property "border" or "border-color".

```
.border, #border, table{ border:4px solid rgb(231, 211, 205) }
```


If only the border color should be changed use the property `border-color`.

```
.border{ border-color:rgb(231, 211, 205) }
```

If you want to add a box shadow in that color use:

Here you see how a box with a 4 pixel `rgb(231, 211, 205)` colored shadow looks like.

```
.boxshadow{ -moz-box-shadow:4px 4px 4px  
4px rgb(231, 211, 205); -webkit-box-  
shadow:4px 4px 4px 4px rgb(231, 211, 205);  
box-shadow:4px 4px 4px 4px rgb(231, 211,  
205) }
```

Background

The CSS property to change the background color of an element to XYZ 67.2687, 67.9852, 67.3346 is called "background". The background property can be set on classes, ids or directly on the HTML element.

```
.background, #background, body{  
background: rgb(231, 211, 205) }
```

If only the background color should be changed can be used:

```
.background{ background-color: rgb(231,  
211, 205) }
```

This example shows the color as background, it is applied via the CSS property "background".

To optimize and compress your CSS code, you can use our [online CSS compressor and optimizer](#) based on csstidy. If you want to create a linear or radial gradient as background or border, check our [CSS Gradient Generator](#).

Hey! You found this booklet interesting? Support Converting Colors with the new Membership Option!

The pro membership hides all ads, plus gives you double the colors in the color bucket, and more awesome pro features!

[Learn more, Memberships starting at \\$2.50/m!](#)

**Follow me
on Twitter!**

@ConvertingColor