

Converting Colors

XYZ(67.3021, 67.7807, 64.3474)

Have a look what the booklet for
XYZ(67.3021, 67.7807, 64.3474)
contains.

XYZ(67.0762, 67.5870, 64.1539)	3
<i>Conversions</i>	4
<i>Details</i>	6
<i>Harmonies</i>	12
<i>Previews</i>	24
<i>Color Blindness Simulation</i>	28
<i>CSS Examples</i>	31

Color

**XYZ(67.0762, 67.5870,
64.1539)**

Conversions

Conversions Part 1

Format	Color
Hex	E9D2C8
RGB	233, 210, 200
RGB Percent	91%, 82%, 78%
CMY	0.0863, 0.1764, 0.2157
CMYK	0.00, 0.10, 0.14, 0.09
HSL	18°, 43%, 85%
HSV	18°, 14%, 91%
XYZ	67.0762, 67.5870, 64.1539
YIQ	215.7370, 16.9180, 1.7660

Conversions

Conversions Part 2

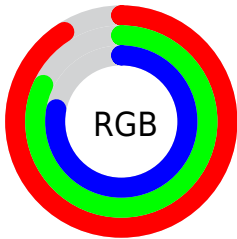
Format	Color
R _Y B	233, 214, 200
Decimal	15323848
CIE Lab	85.80, 6.37, 7.85
CIE LCh	86, 10.105, 50.952
Yxy	67.5870, 0.3374, 0.3399
Android (android.graphics.Color)	4293513928 (0xFFE9D2C8)
YUV	215.7370, -7.7583, 15.1397
Hunter-Lab	82.2113, 1.7683, 11.2807

Details

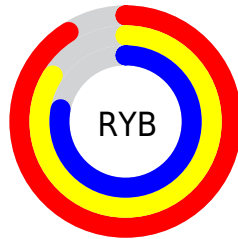
The XYZ color **67.0762, 67.5870, 64.1539** is a light color, and the websafe version is hex **CCCCCC**. A complement of this color would be **64.9147, 70.9363, 87.3621**, and the grayscale version is **65.1359, 68.5281, 74.6270**.

A 20% lighter version of the original color is **95.0500, 100.0000, 108.9000**, and **35.2082, 35.1994, 32.1326** is the 20% darker color. If you saturate the color by 10%, you get **60.7511, 58.9672, 49.6190**, and if you desaturate by 10%, it is **74.2268, 77.1922, 81.0129**.

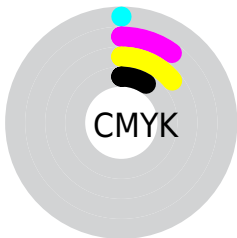
Distribution



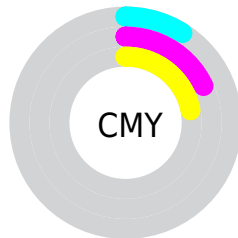
- Red (91%)
- Green (82%)
- Blue (78%)



- Red (91%)
- Yellow (84%)
- Blue (78%)



- Cyan (0%)
- Magenta (10%)
- Yellow (14%)
- Black (9%)



- Cyan (9%)
- Magenta (18%)
- Yellow (22%)

Brightness & Saturation Gradients

These gradients show how the XYZ color 67.0762, 67.5870, 64.1539 changes by changing the brightness by 10 percent. The first figure shows a shift by +10% for each color and the second figure -10%.

Similar to the brightness gradients but the following saturation gradients show a change of the XYZ color 67.0762, 67.5870, 64.1539 by changing the saturation by 10% instead.

67.0762, 67.5870,
64.1539

67.0762, 67.5870,
64.1539

439.6442,
452.0313, 457.9679

49.4175, 49.5618,
46.3284

114.0788,
115.7611, 112.4341

35.1667, 35.0654,
32.1545

144.1534,
146.6788, 143.7259

23.9584, 23.7132,
21.2137

179.0973,
182.6629, 180.3435

15.4273, 15.1210,
13.0876

219.2759,
224.0976, 222.7055

9.2081, 8.9044,
7.3574

265.0545,
271.3674, 271.2304

4.9354, 4.6789,
3.6048

316.7985,

2.2438, 2.0601,

324.8567, 326.3367

1.4111

374.8733,
384.9499, 388.4430

■ 0.7656, 0.6420,
0.1504

■ 0.0000, 0.0000,
0.0000

■ 67.0762, 67.5870,
64.1539

■ 67.0762, 67.5870,
64.1539

■ 60.7511, 58.9672,
49.6190

■ 74.2268, 77.1922,
81.0129

■ 55.2152, 51.2923,
37.3014

■ 82.2263, 87.8040,
100.2879

■ 50.4374, 44.5318,
27.0919

■ 87.4145, 96.0638,
108.5427

■ 46.3826, 38.6504,
18.8708

■ 43.0124, 33.6103,
12.5059

■ 40.2847, 29.3706,
7.8488

■ 38.1519, 25.8868,
4.7279

■ 36.5582, 23.1086,
2.9350

■ 35.8348, 21.7843,
2.3161

Harmonies

Analogous

The Analogous color harmony consists of three colors that are next to each other on the color wheel.



68.4741, 67.5870, 69.1384



67.0762, 67.5870, 64.1539



64.9399, 67.5870, 61.7380

Triad

The Triadic color harmony groups three colors that are evenly spaced from another and form a triangle on the color wheel.



67.0762, 67.5870, 64.1539



59.9552, 67.5870, 71.6099



65.8396, 67.5870, 86.1111

Complementary

The Complementary color scheme is a pair of colors which are on the opposite of each other on the color wheel.



67.0762, 67.5870, 64.1539



64.9147, 70.9363, 87.3621

Split Complementary

Split-complementary colors differ from the complementary color scheme. The scheme consists of three colors, the original color and two neighbors of the complement color.



63.5440, 67.5870, 86.8710



67.0762, 67.5870, 64.1539



60.1830, 67.5870, 78.2303

Square

The Square scheme is like the rectangle color scheme, but the four colors are evenly spaced on the color wheel.



67.0762, 67.5870, 64.1539



60.8538, 67.5870, 65.8701



61.4838, 67.5870, 83.9104



67.7483, 67.5870, 81.8923

Rectangle

The Rectangle color scheme consists of four colors that form a rectangle on the color wheel.



67.0762, 67.5870, 64.1539



63.3999, 67.5870, 61.8033



61.4838, 67.5870, 83.9104



65.0863, 67.5870, 86.7890

Sweetspot

The Sweet Spot groups the original color and five complimentary colors.



67.0781, 67.5900, 64.1553



91.2252, 94.9089, 99.7374



67.5921, 63.9662, 78.6677



19.3760, 20.1143, 20.9906



0.0000, 0.0000, 0.0000



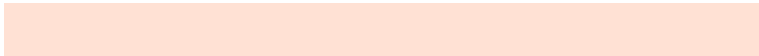
20.3446, 21.4041, 23.3091

Same Dimension

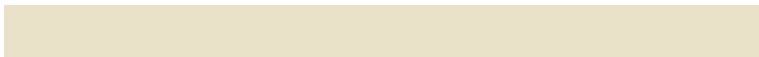
The Same Dimension uses a secret algorithm to generate beautiful new colors.



67.0781, 67.5900, 64.1553



79.9486, 79.7340, 73.2326



71.3355, 76.1050, 65.5745



15.4378, 15.7986, 15.7545



20.4287, 12.5515, 1.3460



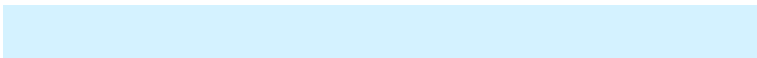
1.6861, 1.1494, 0.1330

Inverse Universe

The Inverse Universe completely reimagines the original color for something new.



64.9147, 70.9363, 87.3621



76.8104, 84.5847, 106.8859



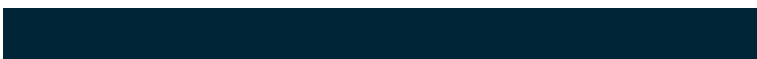
60.7443, 62.5956, 85.9720



15.1099, 16.3062, 19.2733



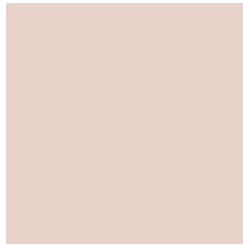
15.8272, 18.3014, 46.4413



1.3268, 1.6050, 3.6747

Previews

White Background



This preview shows how the XYZ color 67.0762, 67.5870, 64.1539 looks on a white background.

Color Contrast Check

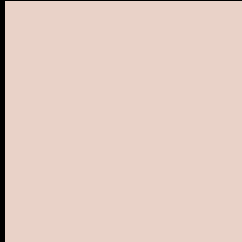
Large Text (above 18pt) WCAG AA × Fail

Any Text WCAG AA × Fail

Large Text (above 18pt) WCAG AAA × Fail

Any Text WCAG AAA × Fail

Black Background



This preview shows how the XYZ color 67.0762, 67.5870, 64.1539 looks on a black background.

Color Contrast Check

Large Text (above 18pt) WCAG AA ✓ Pass

Any Text WCAG AA ✓ Pass

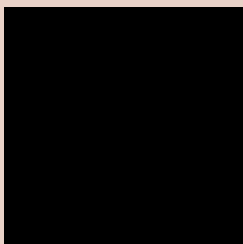
Large Text (above 18pt) WCAG AAA ✓ Pass

Any Text WCAG AAA ✓ Pass

If you want to check with other color combinations, try the [Color Contrast Checker](#).

XYZ 67.0762, 67.5870, 64.1539

Background



This preview shows how black text looks on a background with the XYZ color 67.0762, 67.5870, 64.1539.

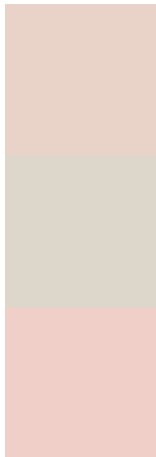


This preview shows how white text looks on a background with the XYZ color 67.0762, 67.5870,

Color Blindness Simulation

Color vision deficiency is a very complex topic, and I could not describe the different causes any better than Wikipedia does, so if you want to learn more, you should check out their [article about color blindness](#).

Dichromacy



Original Color

67.0762, 67.5870, 64.1539

Protanopia

64.5260, 67.7296, 65.5493

Deuteranopia

69.1311, 67.5435, 64.6519



Tritanopia

70.2242, 67.7862, 79.1949

Trichromacy



Original Color

67.0762, 67.5870, 64.1539

Protanomaly

65.3882, 67.8131, 64.9012

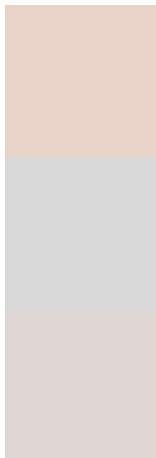
Deuteranomaly

68.3584, 67.5059, 64.6854

Tritanomaly

69.0826, 67.6802, 73.7125

Monochromacy



Original Color

67.0762, 67.5870, 64.1539

Achromatopsia

65.2694, 68.6685, 74.7800

Achromatomaly

65.8036, 68.2759, 70.6831

CSS Examples

Text

The CSS property to change the color of the text to XYZ 67.0762, 67.5870, 64.1539 is called "color". The color property can be set on classes, ids or directly on the HTML element.

This example shows how text in the color `rgb(233, 210, 200)` looks like.

```
.text, #text, p{  
    color:rgb(233, 210, 200)  
}
```

If you want to add a text shadow in that color use the text-shadow property, you can generate a text shadow directly with our [CSS Text Shadow Generator](#).

Here you see how black text with a 4 pixel rgb(233, 210, 200) colored shadow looks like.

```
.shadow{ text-shadow: 4px 4px 2px rgb(233, 210, 200) }
```

Border

The CSS property to change the border of an element to XYZ 67.0762, 67.5870, 64.1539 is called "border". The border property can be set on classes, ids or directly on the HTML element.

This example shows the color as border, it can be applied via the CSS property "border" or "border-color".

```
.border, #border, table{ border:4px solid rgb(233, 210, 200) }
```


If only the border color should be changed use the property `border-color`.

```
.border{ border-color:rgb(233, 210, 200) }
```

If you want to add a box shadow in that color use:

Here you see how a box with a 4 pixel `rgb(233, 210, 200)` colored shadow looks like.

```
.boxshadow{ -moz-box-shadow:4px 4px 4px  
4px rgb(233, 210, 200); -webkit-box-  
shadow:4px 4px 4px 4px rgb(233, 210, 200);  
box-shadow:4px 4px 4px 4px rgb(233, 210,  
200) }
```

Background

The CSS property to change the background color of an element to XYZ 67.0762, 67.5870, 64.1539 is called "background". The background property can be set on classes, ids or directly on the HTML element.

```
.background, #background, body{  
background: rgb(233, 210, 200) }
```

If only the background color should be changed can be used:

```
.background{ background-color: rgb(233,  
210, 200) }
```

This example shows the color as background, it is applied via the CSS property "background".

To optimize and compress your CSS code, you can use our [online CSS compressor and optimizer](#) based on csstidy. If you want to create a linear or radial gradient as background or border, check our [CSS Gradient Generator](#).

Hey! You found this booklet interesting? Support Converting Colors with the new Membership Option!

The pro membership hides all ads, plus gives you double the colors in the color bucket, and more awesome pro features!

[Learn more, Memberships starting at \\$2.50/m!](#)

**Follow me
on Twitter!**

@ConvertingColor