

# Converting Colors

XYZ(67.3108, 66.7012, 66.7452)

Have a look what the booklet for  
XYZ(67.3108, 66.7012, 66.7452)  
contains.

<b>XYZ(67.1436, 66.4777, 66.4194)</b> .....	3
<b><i>Conversions</i></b> .....	4
<b><i>Details</i></b> .....	6
<b><i>Harmonies</i></b> .....	12
<b><i>Previews</i></b> .....	24
<b><i>Color Blindness Simulation</i></b> .....	28
<b><i>CSS Examples</i></b> .....	31

# Color

**XYZ(67.1436, 66.4777,  
66.4194)**

# Conversions

## Conversions Part 1

Format	Color
Hex	EACFCC
RGB	234, 207, 204
RGB Percent	92%, 81%, 80%
CMY	0.0823, 0.1882, 0.2000
CMYK	0.00, 0.12, 0.13, 0.08
HSL	6°, 42%, 86%
HSV	6°, 13%, 92%
XYZ	67.1436, 66.4777, 66.4194
YIQ	214.7310, 17.0550, 4.7910

# Conversions

## Conversions Part 2

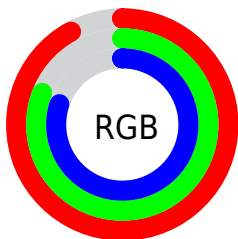
<b>Format</b>	<b>Color</b>
<b>R<sub>YB</sub></b>	234, 207, 204
Decimal	15388620
CIE Lab	85.24, 8.93, 4.93
CIE LCh	85, 10.200, 28.913
Yxy	66.4777, 0.3356, 0.3323
Android (android.graphics.Color)	4293578700 (0xFFEACFCC)
YUV	214.7310, -5.2904, 16.8989
Hunter-Lab	81.5339, 4.3115, 8.7747

# Details

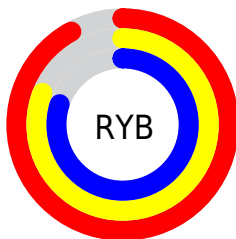
The XYZ color **67.1436, 66.4777, 66.4194** is a light color, and the websafe version is hex **FFCCCC**. A complement of this color would be **68.3287, 75.9282, 88.8969**, and the grayscale version is **64.4375, 67.7933, 73.8268**.

A 20% lighter version of the original color is **95.0500, 100.0000, 108.9000**, and **35.2564, 34.4495, 33.6454** is the 20% darker color. If you saturate the color by 10%, you get **59.7797, 55.9087, 51.1427**, and if you desaturate by 10%, it is **75.6132, 78.5820, 84.1466**.

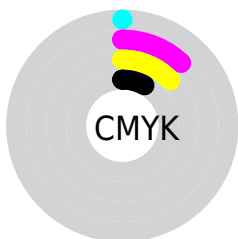
# Distribution



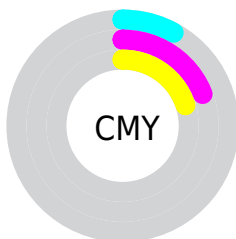
- Red (92%)
- Green (81%)
- Blue (80%)



- Red (92%)
- Yellow (81%)
- Blue (80%)



- Cyan (0%)
- Magenta (12%)
- Yellow (13%)
- Black (8%)



- Cyan (8%)
- Magenta (19%)
- Yellow (20%)

# Brightness & Saturation Gradients

These gradients show how the XYZ color 67.1436, 66.4777, 66.4194 changes by changing the brightness by 10 percent. The first figure shows a shift by +10% for each color and the second figure -10%.

Similar to the brightness gradients but the following saturation gradients show a change of the XYZ color 67.1436, 66.4777, 66.4194 by changing the saturation by 10% instead.



67.1436, 66.4777,  
66.4194

67.1436, 66.4777,  
66.4194

439.8802,  
448.0834, 466.3204

49.4725, 48.6603,  
48.1543

114.1748,  
114.1717, 115.7208

35.2105, 34.3501,  
33.5882

144.2656,  
144.8171, 147.5942

23.9923, 23.1627,  
22.3027

179.2270,  
180.5072, 184.8408

15.4526, 14.7137,  
13.8790

219.4243,  
221.6265, 227.8791

9.2261, 8.6187,  
7.8988

265.2229,  
268.5594, 277.1277

4.9472, 4.4933,  
3.9434

316.9882,

2.2508, 1.9532,

321.6902, 333.0051

1.5943

375.0855,  
381.4034, 395.9298

■ 0.7693, 0.5800,  
0.2868

■ 0.0000, 0.0000,  
0.0000

■ 67.1436, 66.4777,  
66.4194

■ 67.1436, 66.4777,  
66.4194

■ 59.7797, 55.9087,  
51.1427

■ 75.6132, 78.5820,  
84.1466

■ 53.4706, 46.8051,  
38.2046

■ 85.2259, 92.2703,  
104.4211

■ 48.1695, 39.1049,  
27.4908

■ 87.7420, 96.2326,  
108.5580

■ 43.8238, 32.7381,  
18.8759

■ 40.3764, 27.6288,  
12.2219

■ 37.7636, 23.6933,  
7.3741

■ 35.9138, 20.8379,  
4.1547

■ 34.7425, 18.9541,  
2.3496

■ 34.2470, 18.1227,  
1.6930

# Harmonies

## Analogous

The Analogous color harmony consists of three colors that are next to each other on the color wheel.



67.7195, 66.4777, 72.6240



67.1436, 66.4777, 66.4194



65.5007, 66.4777, 62.0504

# Triad

The Triadic color harmony groups three colors that are evenly spaced from another and form a triangle on the color wheel.



67.1436, 66.4777, 66.4194



59.4660, 66.4777, 66.0263



63.1010, 66.4777, 85.8262

# Complementary

The Complementary color scheme is a pair of colors which are on the opposite of each other on the color wheel.



67.1436, 66.4777, 66.4194



68.3287, 75.9282, 88.8969

# Split Complementary

Split-complementary colors differ from the complementary color scheme. The scheme consists of three colors, the original color and two neighbors of the complement color.



60.9247, 66.4777, 83.8032



67.1436, 66.4777, 66.4194



58.8577, 66.4777, 72.1424

# Square

The Square scheme is like the rectangle color scheme, but the four colors are evenly spaced on the color wheel.



67.1436, 66.4777, 66.4194



61.0669, 66.4777, 61.8333



59.3852, 66.4777, 78.6931



65.3516, 66.4777, 84.0690



# Rectangle

The Rectangle color scheme consists of four colors that form a rectangle on the color wheel.



67.1436, 66.4777, 66.4194



64.0410, 66.4777, 60.6304



59.3852, 66.4777, 78.6931



62.3368, 66.4777, 85.5637

# Sweetspot

The Sweet Spot groups the original color and five complimentary colors.



67.1454, 66.4807, 66.4208



90.5924, 93.6433, 99.5264



69.9492, 66.4486, 84.7412



19.2164, 19.7951, 20.9374



0.0000, 0.0000, 0.0000



20.3446, 21.4041, 23.3091



# Same Dimension

The Same Dimension uses a secret algorithm to generate beautiful new colors.



67.1454, 66.4807, 66.4208



79.4776, 77.7483, 76.2933



70.9528, 74.0955, 67.6899



15.1868, 15.2966, 15.6708



19.2862, 10.2666, 0.9652



1.5555, 0.8883, 0.0895



# Inverse Universe

The Inverse Universe completely reimagines the original color for something new.



68.3287, 75.9282, 88.8969



81.1412, 91.0339, 107.9024



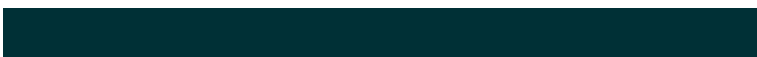
64.3099, 67.8905, 87.5573



15.3813, 16.8490, 19.3638



21.4286, 29.5042, 48.3084

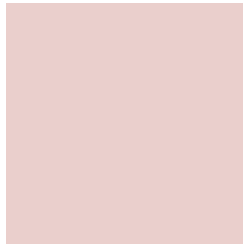


1.7200, 2.3914, 3.8058



# Previews

## White Background



This preview shows how the XYZ color 67.1436, 66.4777, 66.4194 looks on a white background.

## Color Contrast Check

Large Text (above 18pt) WCAG AA × Fail

Any Text WCAG AA × Fail

Large Text (above 18pt) WCAG AAA × Fail

Any Text WCAG AAA × Fail



# Black Background



This preview shows how the XYZ color 67.1436, 66.4777, 66.4194 looks on a black background.

## Color Contrast Check

Large Text (above 18pt) WCAG AA ✓ Pass

Any Text WCAG AA ✓ Pass

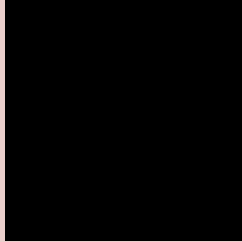
Large Text (above 18pt) WCAG AAA ✓ Pass

Any Text WCAG AAA ✓ Pass

If you want to check with other color combinations, try the [Color Contrast Checker](#).

# XYZ 67.1436, 66.4777, 66.4194

## Background



This preview shows how black text looks on a background with the XYZ color 67.1436, 66.4777, 66.4194.



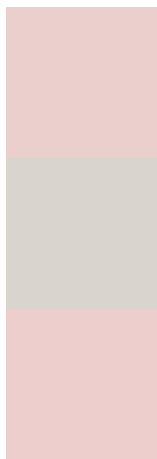
This preview shows how white text looks on a background with the XYZ color 67.1436, 66.4777,



# Color Blindness Simulation

Color vision deficiency is a very complex topic, and I could not describe the different causes any better than Wikipedia does, so if you want to learn more, you should check out their [article about color blindness](#).

## Dichromacy



### Original Color

67.1436, 66.4777, 66.4194

### Protanopia

63.7194, 66.4974, 68.5084

### Deuteranopia

67.8954, 66.5068, 66.3854



## Tritanopia

69.1032, 66.1859, 76.8432

# Trichromacy



## Original Color

67.1436, 66.4777, 66.4194

## Protanomaly

64.9276, 66.3967, 67.7863

## Deuteranomaly

67.5625, 66.3351, 66.3698

## Tritanomaly

68.2299, 66.1799, 72.7962

# Monochromacy



## Original Color

67.1436, 66.4777, 66.4194

## Achromatopsia

64.5905, 67.9542, 74.0022

## Achromatomaly

65.4256, 67.3197, 71.1737

# CSS Examples

## Text

The CSS property to change the color of the text to XYZ 67.1436, 66.4777, 66.4194 is called "color". The color property can be set on classes, ids or directly on the HTML element.

This example shows how text in the color rgb(234, 207, 204) looks like.

```
.text, #text, p{  
    color:rgb(234, 207, 204)  
}
```

If you want to add a text shadow in that color use the text-shadow property, you can generate a text shadow directly with our [CSS Text Shadow Generator](#).

Here you see how black text with a 4 pixel rgb(234, 207, 204) colored shadow looks like.

```
.shadow{ text-shadow: 4px 4px 2px rgb(234, 207, 204) }
```

## Border

The CSS property to change the border of an element to XYZ 67.1436, 66.4777, 66.4194 is called "border". The border property can be set on classes, ids or directly on the HTML element.

This example shows the color as border, it can be applied via the CSS property "border" or "border-color".

```
.border, #border, table{ border:4px solid rgb(234, 207, 204) }
```



If only the border color should be changed use the property border-color.

```
.border{ border-color:rgb(234, 207, 204) }
```

If you want to add a box shadow in that color use:

Here you see how a box with a 4 pixel rgb(234, 207, 204) colored shadow looks like.

```
.boxshadow{ -moz-box-shadow:4px 4px 4px  
4px rgb(234, 207, 204); -webkit-box-  
shadow:4px 4px 4px 4px rgb(234, 207, 204);  
box-shadow:4px 4px 4px 4px rgb(234, 207,  
204) }
```

# Background

The CSS property to change the background color of an element to XYZ 67.1436, 66.4777, 66.4194 is called "background". The background property can be set on classes, ids or directly on the HTML element.

```
.background, #background, body{  
background: rgb(234, 207, 204) }
```

If only the background color should be changed can be used:

```
.background{ background-color: rgb(234,  
207, 204) }
```

This example shows the color as background, it is applied via the CSS property "background".

To optimize and compress your CSS code, you can use our [online CSS compressor and optimizer](#) based on csstidy. If you want to create a linear or radial gradient as background or border, check our [CSS Gradient Generator](#).

Hey! You found this booklet interesting? Support Converting Colors with the new Membership Option!

The pro membership hides all ads, plus gives you double the colors in the color bucket, and more awesome pro features!

**[Learn more, Memberships starting at \\$2.50/m!](#)**

**Follow me  
on Twitter!**

@ConvertingColor