

Converting Colors

XYZ(67.3132, 68.4786, 68.4500)

Have a look what the booklet for
XYZ(67.3132, 68.4786, 68.4500)
contains.

| | |
|--|----|
| XYZ(67.1191, 68.2500, 68.6675) | 3 |
| <i>Conversions</i> | 4 |
| <i>Details</i> | 6 |
| <i>Harmonies</i> | 12 |
| <i>Previews</i> | 24 |
| <i>Color Blindness Simulation</i> | 28 |
| <i>CSS Examples</i> | 31 |

Color

**XYZ(67.1191, 68.2500,
68.6675)**

Conversions

Conversions Part 1

| Format | Color |
|---------------|---------------------------|
| Hex | E5D4CF |
| RGB | 229, 212, 207 |
| RGB Percent | 90%, 83%, 81% |
| CMY | 0.1020, 0.1686, 0.1882 |
| CMYK | 0.00, 0.07, 0.10, 0.10 |
| HSL | 14°, 30%, 85% |
| HSV | 14°, 10%, 90% |
| XYZ | 67.1191, 68.2500, 68.6675 |
| YIQ | 216.5130, 11.7370, 2.0490 |

Conversions

Conversions Part 2

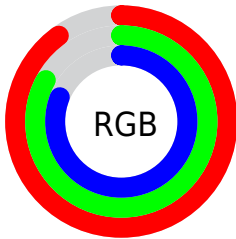
| Format | Color |
|-------------------------------------|-------------------------------|
| R _Y B | 229, 213, 207 |
| Decimal | 15062223 |
| CIE Lab | 86.13, 5.03, 4.58 |
| CIE LCh | 86, 6.801, 42.294 |
| Yxy | 68.2500, 0.3290, 0.3345 |
| Android (android.graphics.Color) | 4293252303 (0xFFE5D4CF) |
| YUV | 216.5130, -4.6899, 10.9511 |
| Hunter-Lab | 82.6136, 0.4480, 8.5483 |

Details

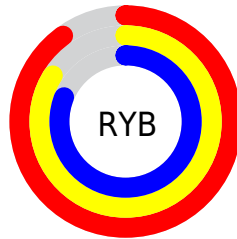
The XYZ color **67.1191, 68.2500, 68.6675** is a light color, and the websafe version is hex **CCCCCC**. A complement of this color would be **66.5304, 72.2326, 84.5653**, and the grayscale version is **65.6472, 69.0660, 75.2128**.

A 20% lighter version of the original color is **95.0500, 100.0000, 108.9000**, and **35.0403, 35.2981, 35.1034** is the 20% darker color. If you saturate the color by 10%, you get **60.3376, 58.8468, 53.5816**, and if you desaturate by 10%, it is **74.7951, 78.7909, 86.0566**.

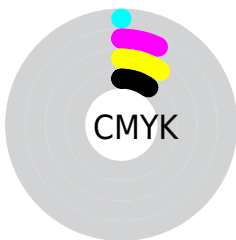
Distribution



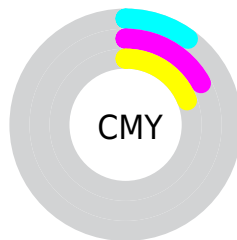
- Red (90%)
- Green (83%)
- Blue (81%)



- Red (90%)
- Yellow (84%)
- Blue (81%)



- Cyan (0%)
- Magenta (7%)
- Yellow (10%)
- Black (10%)



- Cyan (10%)
- Magenta (17%)
- Yellow (19%)

Brightness & Saturation Gradients

These gradients show how the XYZ color 67.1191, 68.2500, 68.6675 changes by changing the brightness by 10 percent. The first figure shows a shift by +10% for each color and the second figure -10%.

Similar to the brightness gradients but the following saturation gradients show a change of the XYZ color 67.1191, 68.2500, 68.6675 by changing the saturation by 10% instead.

67.1191, 68.2500,
68.6675

67.1191, 68.2500,
68.6675

439.7944,
454.3813, 474.5195

49.4525, 50.1011,
49.9709

114.1399,
116.7097, 118.9698

35.1946, 35.4938,
35.0193

144.2248,
147.7894, 151.4125

23.9800, 24.0435,
23.3940

179.1798,
183.9481, 189.2744

15.4434, 15.3659,
14.6767

219.3703,
225.5702, 232.9739

9.2195, 9.0766,
8.4487

265.1617,
273.0402, 282.9297

4.9429, 4.7912,
4.2915

316.9193,

2.2482, 2.1253,

326.7425, 339.5601

1.7866

375.0084,
387.0614, 403.2839

■ 0.7680, 0.6788,
0.4191

■ 0.0000, 0.0000,
0.0000

■ 67.1191, 68.2500,
68.6675

■ 67.1191, 68.2500,
68.6675

■ 60.3376, 58.8468,
53.5816

■ 74.7951, 78.7909,
86.0566

■ 54.4120, 50.5341,
40.6976

■ 83.3911, 90.4966,
105.8354

■ 49.3091, 43.2747,
29.9132

■ 86.1235, 95.3982,
108.4822

■ 44.9915, 37.0260,
21.1164

■ 41.4185, 31.7423,
14.1843

■ 38.5458, 27.3742,
8.9807

■ 36.3239, 23.8679,
5.3503

■ 34.6963, 21.1633,
3.1096

■ 33.5817, 19.1867,
1.9593

Harmonies

Analogous

The Analogous color harmony consists of three colors that are next to each other on the color wheel.



67.8518, 68.2500, 72.4942



67.1191, 68.2500, 68.6675



65.7883, 68.2500, 66.4079

Triad

The Triadic color harmony groups three colors that are evenly spaced from another and form a triangle on the color wheel.



67.1191, 68.2500, 68.6675



62.0473, 68.2500, 71.7245



65.5119, 68.2500, 83.0474

Complementary

The Complementary color scheme is a pair of colors which are on the opposite of each other on the color wheel.



67.1191, 68.2500, 68.6675



66.5304, 72.2326, 84.5653

Split Complementary

Split-complementary colors differ from the complementary color scheme. The scheme consists of three colors, the original color and two neighbors of the complement color.



63.9594, 68.2500, 82.8210



67.1191, 68.2500, 68.6675



61.9760, 68.2500, 76.1612

Square

The Square scheme is like the rectangle color scheme, but the four colors are evenly spaced on the color wheel.



67.1191, 68.2500, 68.6675



62.8673, 68.2500, 68.1235



62.6709, 68.2500, 80.2590



66.9139, 68.2500, 80.8658

Rectangle

The Rectangle color scheme consists of four colors that form a rectangle on the color wheel.



67.1191, 68.2500, 68.6675



64.7493, 68.2500, 66.0366



62.6709, 68.2500, 80.2590



64.9900, 68.2500, 83.2528

Sweetspot

The Sweet Spot groups the original color and five complimentary colors.



67.1210, 68.2530, 68.6690



91.9861, 95.8041, 101.9230



68.1130, 66.6791, 79.9683



19.5174, 20.2709, 21.4266



0.0000, 0.0000, 0.0000



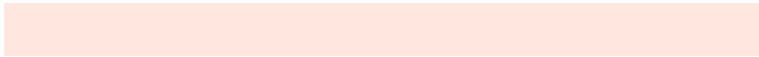
20.3446, 21.4041, 23.3091

Same Dimension

The Same Dimension uses a secret algorithm to generate beautiful new colors.



67.1210, 68.2530, 68.6690



83.4257, 84.0173, 82.6257



69.9018, 73.8147, 69.5959



14.6416, 14.8971, 15.0082



19.2543, 11.0827, 1.1244



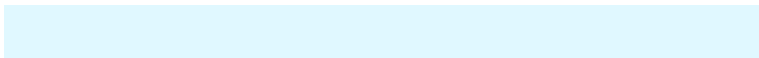
1.4919, 0.9572, 0.1061

Inverse Universe

The Inverse Universe completely reimagines the original color for something new.



66.5304, 72.2326, 84.5653



82.4942, 90.2905, 107.6876



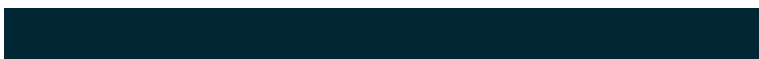
63.7289, 66.6295, 83.6315



14.5149, 15.7512, 18.4196



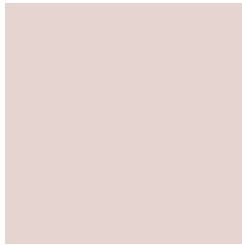
17.1601, 21.3823, 45.6059



1.3363, 1.7164, 3.3928

Previews

White Background



This preview shows how the XYZ color 67.1191, 68.2500, 68.6675 looks on a white background.

Color Contrast Check

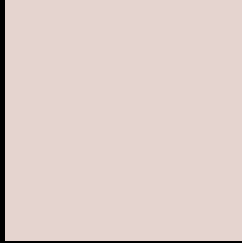
Large Text (above 18pt) WCAG AA × Fail

Any Text WCAG AA × Fail

Large Text (above 18pt) WCAG AAA × Fail

Any Text WCAG AAA × Fail

Black Background



This preview shows how the XYZ color 67.1191, 68.2500, 68.6675 looks on a black background.

Color Contrast Check

Large Text (above 18pt) WCAG AA ✓ Pass

Any Text WCAG AA ✓ Pass

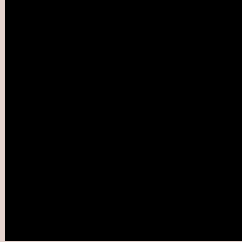
Large Text (above 18pt) WCAG AAA ✓ Pass

Any Text WCAG AAA ✓ Pass

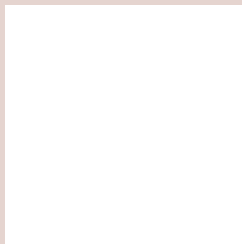
If you want to check with other color combinations, try the [Color Contrast Checker](#).

XYZ 67.1191, 68.2500, 68.6675

Background



This preview shows how black text looks on a background with the XYZ color 67.1191, 68.2500, 68.6675.

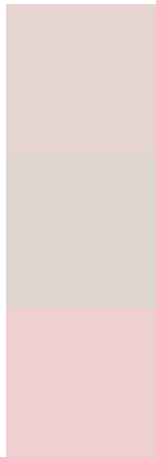


This preview shows how white text looks on a background with the XYZ color 67.1191, 68.2500,

Color Blindness Simulation

Color vision deficiency is a very complex topic, and I could not describe the different causes any better than Wikipedia does, so if you want to learn more, you should check out their [article about color blindness](#).

Dichromacy



Original Color

67.1191, 68.2500, 68.6675

Protanopia

65.5044, 68.5271, 69.4491

Deuteranopia

69.5376, 68.0165, 69.1380



Tritanopia

69.8066, 68.2477, 81.4454

Trichromacy



Original Color

67.1191, 68.2500, 68.6675

Protanomaly

66.1722, 68.4945, 69.4076

Deuteranomaly

68.4466, 67.8172, 69.1570

Tritanomaly

68.7878, 68.1966, 76.5556

Monochromacy



Original Color

67.1191, 68.2500, 68.6675

Achromatopsia

65.9525, 69.3872, 75.5626

Achromatomaly

66.1295, 68.7771, 72.7407

CSS Examples

Text

The CSS property to change the color of the text to XYZ 67.1191, 68.2500, 68.6675 is called "color". The color property can be set on classes, ids or directly on the HTML element.

This example shows how text in the color `rgb(229, 212, 207)` looks like.

```
.text, #text, p{  
    color:rgb(229, 212, 207)  
}
```

If you want to add a text shadow in that color use the text-shadow property, you can generate a text shadow directly with our [CSS Text Shadow Generator](#).

Here you see how black text with a 4 pixel rgb(229, 212, 207) colored shadow looks like.

```
.shadow{ text-shadow: 4px 4px 2px rgb(229, 212, 207) }
```

Border

The CSS property to change the border of an element to XYZ 67.1191, 68.2500, 68.6675 is called "border". The border property can be set on classes, ids or directly on the HTML element.

This example shows the color as border, it can be applied via the CSS property "border" or "border-color".

```
.border, #border, table{ border:4px solid rgb(229, 212, 207) }
```


If only the border color should be changed use the property `border-color`.

```
.border{ border-color:rgb(229, 212, 207) }
```

If you want to add a box shadow in that color use:

Here you see how a box with a 4 pixel `rgb(229, 212, 207)` colored shadow looks like.

```
.boxshadow{ -moz-box-shadow:4px 4px 4px  
4px rgb(229, 212, 207); -webkit-box-  
shadow:4px 4px 4px 4px rgb(229, 212, 207);  
box-shadow:4px 4px 4px 4px rgb(229, 212,  
207) }
```

Background

The CSS property to change the background color of an element to XYZ 67.1191, 68.2500, 68.6675 is called "background". The background property can be set on classes, ids or directly on the HTML element.

```
.background, #background, body{  
background: rgb(229, 212, 207) }
```

If only the background color should be changed can be used:

```
.background{ background-color: rgb(229,  
212, 207) }
```

This example shows the color as background, it is applied via the CSS property "background".

To optimize and compress your CSS code, you can use our [online CSS compressor and optimizer](#) based on csstidy. If you want to create a linear or radial gradient as background or border, check our [CSS Gradient Generator](#).

Hey! You found this booklet interesting? Support Converting Colors with the new Membership Option!

The pro membership hides all ads, plus gives you double the colors in the color bucket, and more awesome pro features!

[Learn more, Memberships starting at \\$2.50/m!](#)

**Follow me
on Twitter!**

@ConvertingColor