

Converting Colors

XYZ(67.3379, 64.4421, 63.5433)

Have a look what the booklet for
XYZ(67.3379, 64.4421, 63.5433)
contains.

XYZ(67.2472, 64.4687, 63.5430)	3
<i>Conversions</i>	4
<i>Details</i>	6
<i>Harmonies</i>	12
<i>Previews</i>	24
<i>Color Blindness Simulation</i>	28
<i>CSS Examples</i>	31

Color

**XYZ(67.2472, 64.4687,
63.5430)**

Conversions

Conversions Part 1

Format	Color
Hex	F0C9C8
RGB	240, 201, 200
RGB Percent	94%, 79%, 78%
CMY	0.0588, 0.2117, 0.2157
CMYK	0.00, 0.16, 0.17, 0.06
HSL	2°, 57%, 86%
HSV	2°, 17%, 94%
XYZ	67.2472, 64.4687, 63.5430
YIQ	212.5470, 23.5650, 7.9570

Conversions

Conversions Part 2

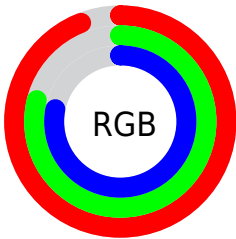
Format	Color
R _Y B	240, 201, 200
Decimal	15780296
CIE Lab	84.21, 13.60, 5.64
CIE LCh	84, 14.722, 22.526
Yxy	64.4687, 0.3444, 0.3302
Android (android.graphics.Color)	4293970376 (0xFFFF0C9C8)
YUV	212.5470, -6.1857, 24.0763
Hunter-Lab	80.2924, 8.9872, 9.2829

Details

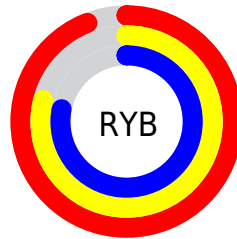
The XYZ color **67.2472, 64.4687, 63.5430** is a light color, and the websafe version is hex **FFCCCC**. A complement of this color would be **70.4136, 80.3019, 94.2274**, and the grayscale version is **62.9738, 66.2534, 72.1499**.

A 20% lighter version of the original color is **95.0500, 100.0000, 108.9000**, and **35.3892, 33.1331, 31.7242** is the 20% darker color. If you saturate the color by 10%, you get **59.6147, 53.3452, 48.2296**, and if you desaturate by 10%, it is **76.1544, 77.4357, 81.4549**.

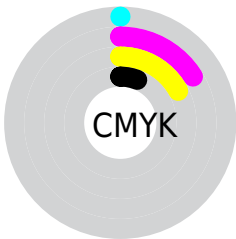
Distribution



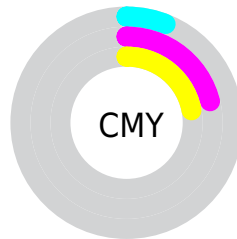
- Red (94%)
- Green (79%)
- Blue (78%)



- Red (94%)
- Yellow (79%)
- Blue (78%)



- Cyan (0%)
- Magenta (16%)
- Yellow (17%)
- Black (6%)



- Cyan (6%)
- Magenta (21%)
- Yellow (22%)

Brightness & Saturation Gradients

These gradients show how the XYZ color 67.2472, 64.4687, 63.5430 changes by changing the brightness by 10 percent. The first figure shows a shift by +10% for each color and the second figure -10%.

Similar to the brightness gradients but the following saturation gradients show a change of the XYZ color 67.2472, 64.4687, 63.5430 by changing the saturation by 10% instead.

67.2472, 64.4687,
63.5430

67.2472, 64.4687,
63.5430

440.2428,
440.8802, 455.6995

49.5570, 47.0304,
45.8368

114.3224,
111.2857, 111.5456

35.2779, 33.0597,
31.7693

144.4381,
141.4331, 142.6792

24.0445, 22.1722,
20.9220

179.4263,
176.5857, 179.1256

15.4916, 13.9835,
12.8763

219.6524,
217.1279, 221.3034

9.2537, 8.1092,
7.2137

265.4818,
263.4441, 269.6312

4.9654, 4.1649,
3.5156

317.2797,

2.2615, 1.7662,

315.9186, 324.5274

1.3636

375.4116,
374.9358, 386.4107

■ 0.7749, 0.4660,
0.1131

■ 0.0000, 0.0000,
0.0000

■ 67.2472, 64.4687,
63.5430

■ 67.2472, 64.4687,
63.5430

■ 59.6147, 53.3452,
48.2296

■ 76.1544, 77.4357,
81.4549

■ 53.1935, 43.9733,
35.3904

■ 86.3852, 92.3152,
102.0739

■ 47.9231, 36.2665,
24.8968

■ 89.7455, 97.2654,
108.6518

■ 43.7354, 30.1272,
16.6070

■ 40.5552, 25.4481,
10.3641

■ 38.2979, 22.1081,
5.9903

■ 36.8647, 19.9668,
3.2775

■ 36.1340, 18.8524,
1.9641

■ 36.0009, 18.6562,
1.7036

Harmonies

Analogous

The Analogous color harmony consists of three colors that are next to each other on the color wheel.



67.7002, 64.4687, 72.5555



67.2472, 64.4687, 63.5430



65.1671, 64.4687, 56.8959

Triad

The Triadic color harmony groups three colors that are evenly spaced from another and form a triangle on the color wheel.



67.2472, 64.4687, 63.5430



56.4363, 64.4687, 59.8345



60.4642, 64.4687, 89.5325

Complementary

The Complementary color scheme is a pair of colors which are on the opposite of each other on the color wheel.



67.2472, 64.4687, 63.5430



70.4136, 80.3019, 94.2274

Split Complementary

Split-complementary colors differ from the complementary color scheme. The scheme consists of three colors, the original color and two neighbors of the complement color.



57.5421, 64.4687, 85.4211



67.2472, 64.4687, 63.5430



55.2708, 64.4687, 67.8872

Square

The Square scheme is like the rectangle color scheme, but the four colors are evenly spaced on the color wheel.



67.2472, 64.4687, 63.5430



58.9064, 64.4687, 54.8908



55.6684, 64.4687, 77.2967



63.7074, 64.4687, 88.1093

Rectangle

The Rectangle color scheme consists of four colors that form a rectangle on the color wheel.



67.2472, 64.4687, 63.5430



63.1763, 64.4687, 54.4329



55.6684, 64.4687, 77.2967



59.4134, 64.4687, 88.7403

Sweetspot

The Sweet Spot groups the original color and five complimentary colors.



67.2490, 64.4716, 63.5444



89.2267, 91.5300, 97.1657



72.2195, 66.0864, 90.8701



18.9297, 19.3460, 20.4581



0.0000, 0.0000, 0.0000



20.3446, 21.4041, 23.3091

Same Dimension

The Same Dimension uses a secret algorithm to generate beautiful new colors.



67.2490, 64.4716, 63.5444



74.0376, 69.4166, 66.6233



72.1298, 74.2333, 65.1713



15.8046, 15.8223, 16.3707



19.7215, 10.2411, 0.9373



1.6518, 0.8742, 0.0817

Inverse Universe

The Inverse Universe completely reimagines the original color for something new.



70.4136, 80.3019, 94.2274



78.3047, 90.7631, 107.9997



64.9670, 69.4087, 92.4119



16.2114, 17.8568, 20.3139



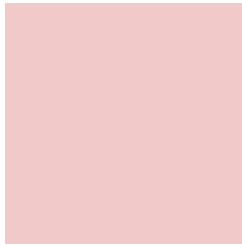
24.7280, 35.6802, 50.7115



2.0678, 2.9897, 4.2223

Previews

White Background



This preview shows how the XYZ color 67.2472, 64.4687, 63.5430 looks on a white background.

Color Contrast Check

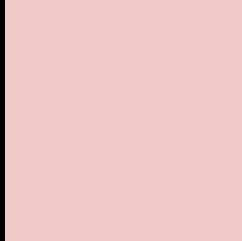
Large Text (above 18pt) WCAG AA × Fail

Any Text WCAG AA × Fail

Large Text (above 18pt) WCAG AAA × Fail

Any Text WCAG AAA × Fail

Black Background



This preview shows how the XYZ color 67.2472, 64.4687, 63.5430 looks on a black background.

Color Contrast Check

Large Text (above 18pt) WCAG AA ✓ Pass

Any Text WCAG AA ✓ Pass

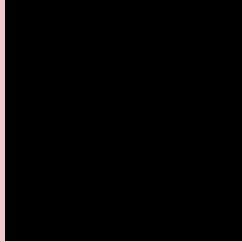
Large Text (above 18pt) WCAG AAA ✓ Pass

Any Text WCAG AAA ✓ Pass

If you want to check with other color combinations, try the [Color Contrast Checker](#).

XYZ 67.2472, 64.4687, 63.5430

Background



This preview shows how black text looks on a background with the XYZ color 67.2472, 64.4687, 63.5430.



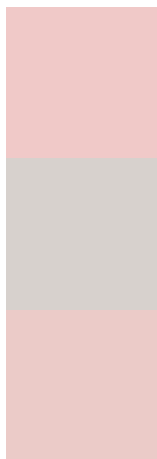
This preview shows how white text looks on a background with the XYZ color 67.2472, 64.4687,

63.5430.

Color Blindness Simulation

Color vision deficiency is a very complex topic, and I could not describe the different causes any better than Wikipedia does, so if you want to learn more, you should check out their [article about color blindness](#).

Dichromacy



Original Color

67.2472, 64.4687, 63.5430

Protanopia

61.8442, 64.4558, 66.9393

Deuteranopia

66.0422, 64.5442, 63.6211



Tritanopia

69.1790, 64.5791, 72.4372

Trichromacy



Original Color

67.2472, 64.4687, 63.5430

Protanomaly

63.5913, 64.3017, 65.5598

Deuteranomaly

66.4709, 64.4157, 63.5737

Tritanomaly

68.4385, 64.6128, 69.1860

Monochromacy



Original Color

67.2472, 64.4687, 63.5430

Achromatopsia

63.2451, 66.5387, 72.4607

Achromatomaly

64.6171, 65.8430, 68.9778

CSS Examples

Text

The CSS property to change the color of the text to XYZ 67.2472, 64.4687, 63.5430 is called "color". The color property can be set on classes, ids or directly on the HTML element.

This example shows how text in the color `rgb(240, 201, 200)` looks like.

```
.text, #text, p{  
    color:rgb(240, 201, 200)  
}
```

If you want to add a text shadow in that color use the text-shadow property, you can generate a text shadow directly with our [CSS Text Shadow Generator](#).

Here you see how black text with a 4 pixel rgb(240, 201, 200) colored shadow looks like.

```
.shadow{ text-shadow: 4px 4px 2px rgb(240, 201, 200) }
```

Border

The CSS property to change the border of an element to XYZ 67.2472, 64.4687, 63.5430 is called "border". The border property can be set on classes, ids or directly on the HTML element.

This example shows the color as border, it can be applied via the CSS property "border" or "border-color".

```
.border, #border, table{ border:4px solid rgb(240, 201, 200) }
```


If only the border color should be changed use the property `border-color`.

```
.border{ border-color:rgb(240, 201, 200) }
```

If you want to add a box shadow in that color use:

Here you see how a box with a 4 pixel `rgb(240, 201, 200)` colored shadow looks like.

```
.boxshadow{ -moz-box-shadow:4px 4px 4px  
4px rgb(240, 201, 200); -webkit-box-  
shadow:4px 4px 4px 4px rgb(240, 201, 200);  
box-shadow:4px 4px 4px 4px rgb(240, 201,  
200) }
```

Background

The CSS property to change the background color of an element to XYZ 67.2472, 64.4687, 63.5430 is called "background". The background property can be set on classes, ids or directly on the HTML element.

```
.background, #background, body{  
background: rgb(240, 201, 200) }
```

If only the background color should be changed can be used:

```
.background{ background-color: rgb(240,  
201, 200) }
```

This example shows the color as background, it is applied via the CSS property "background".

To optimize and compress your CSS code, you can use our [online CSS compressor and optimizer](#) based on csstidy. If you want to create a linear or radial gradient as background or border, check our [CSS Gradient Generator](#).

Hey! You found this booklet interesting? Support Converting Colors with the new Membership Option!

The pro membership hides all ads, plus gives you double the colors in the color bucket, and more awesome pro features!

[Learn more, Memberships starting at \\$2.50/m!](#)

**Follow me
on Twitter!**

@ConvertingColor