

Converting Colors

XYZ(67.4449, 67.2726, 72.1616)

Have a look what the booklet for
XYZ(67.4449, 67.2726, 72.1616)
contains.

XYZ(67.4438, 67.2280, 72.3724)	3
<i>Conversions</i>	4
<i>Details</i>	6
<i>Harmonies</i>	12
<i>Previews</i>	24
<i>Color Blindness Simulation</i>	28
<i>CSS Examples</i>	31

Color

**XYZ(67.4438, 67.2280,
72.3724)**

Conversions

Conversions Part 1

Format	Color
Hex	E6D1D5
RGB	230, 209, 213
RGB Percent	90%, 82%, 84%
CMY	0.0980, 0.1804, 0.1647
CMYK	0.00, 0.09, 0.07, 0.10
HSL	349°, 30%, 86%
HSV	349°, 9%, 90%
XYZ	67.4438, 67.2280, 72.3724
YIQ	215.7350, 11.2320, 5.6960

Conversions

Conversions Part 2

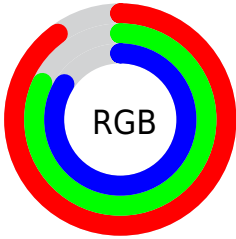
Format	Color
R _Y B	230, 209, 213
Decimal	15126997
CIE Lab	85.62, 7.96, 0.66
CIE LCh	86, 7.984, 4.761
Yxy	67.2280, 0.3257, 0.3247
Android (android.graphics.Color)	4293317077 (0xFFE6D1D5)
YUV	215.7350, -1.3484, 12.5104
Hunter-Lab	81.9927, 3.3395, 5.0614

Details

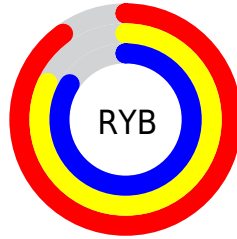
The XYZ color **67.4438, 67.2280, 72.3724** is a light color, and the websafe version is hex **CCCCCC**. A complement of this color would be **68.3213, 75.6416, 82.9545**, and the grayscale version is **65.0950, 68.4850, 74.5802**.

A 20% lighter version of the original color is **95.0500, 100.0000, 108.9000**, and **35.3485, 34.9100, 37.2230** is the 20% darker color. If you saturate the color by 10%, you get **59.9737, 55.8553, 58.8825**, and if you desaturate by 10%, it is **76.0038, 80.3444, 87.5664**.

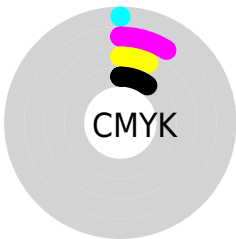
Distribution



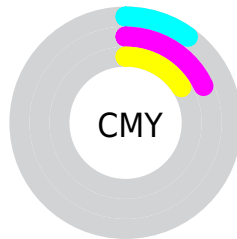
- Red (90%)
- Green (82%)
- Blue (84%)



- Red (90%)
- Yellow (82%)
- Blue (84%)



- Cyan (0%)
- Magenta (9%)
- Yellow (7%)
- Black (10%)



- Cyan (10%)
- Magenta (18%)
- Yellow (16%)

Brightness & Saturation Gradients

These gradients show how the XYZ color 67.4438, 67.2280, 72.3724 changes by changing the brightness by 10 percent. The first figure shows a shift by +10% for each color and the second figure -10%.

Similar to the brightness gradients but the following saturation gradients show a change of the XYZ color 67.4438, 67.2280, 72.3724 by changing the saturation by 10% instead.

67.4438, 67.2280,
72.3724

67.4438, 67.2280,
72.3724

440.9305,
450.7559, 487.8491

49.7174, 49.2699,
52.9742

114.6024,
115.2471, 124.2985

35.4058, 34.8337,
37.3946

144.7653,
146.0768, 157.6635

24.1436, 23.5348,
25.2150

179.8044,
181.9660, 196.5212

15.5655, 14.9889,
16.0168

220.0851,
223.2989, 241.2901

9.3061, 8.8116,
9.3816

265.9727,
270.4599, 292.3889

5.0001, 4.6185,
4.8907

317.8325,

2.2821, 2.0252,

323.8335, 350.2359

2.1257

376.0300,
383.8040, 415.2498

■ 0.7855, 0.6221,
0.6310

■ 0.0000, 0.0000,
0.0000

■ 67.4438, 67.2280,
72.3724

■ 67.4438, 67.2280,
72.3724

■ 59.9737, 55.8553,
58.8825

■ 76.0038, 80.3444,
87.5664

■ 53.5440, 46.1444,
47.0326

■ 85.6875, 95.2608,
104.5164

■ 48.1095, 38.0197,
36.7610

■ 86.4435, 95.5632,
108.4972

■ 43.6199, 31.3967,
28.0003

■ 40.0200, 26.1828,
20.6783

■ 37.2490, 22.2751,
14.7165

■ 35.2382, 19.5565,
10.0290

■ 33.9072, 17.8890,
6.5193

■ 33.1366, 17.0592,
4.0692

Harmonies

Analogous

The Analogous color harmony consists of three colors that are next to each other on the color wheel.



67.1111, 67.2280, 77.5500



67.4438, 67.2280, 72.3724



66.8119, 67.2280, 67.6414

Triad

The Triadic color harmony groups three colors that are evenly spaced from another and form a triangle on the color wheel.



67.4438, 67.2280, 72.3724



61.9267, 67.2280, 65.2830



62.4199, 67.2280, 82.6295

Complementary

The Complementary color scheme is a pair of colors which are on the opposite of each other on the color wheel.



67.4438, 67.2280, 72.3724



68.3213, 75.6416, 82.9545

Split Complementary

Split-complementary colors differ from the complementary color scheme. The scheme consists of three colors, the original color and two neighbors of the complement color.



61.0705, 67.2280, 79.0548



67.4438, 67.2280, 72.3724



60.7895, 67.2280, 69.0155

Square

The Square scheme is like the rectangle color scheme, but the four colors are evenly spaced on the color wheel.



67.4438, 67.2280, 72.3724



63.6086, 67.2280, 63.6737



60.4791, 67.2280, 74.0336



64.1887, 67.2280, 83.6317

Rectangle

The Rectangle color scheme consists of four colors that form a rectangle on the color wheel.



67.4438, 67.2280, 72.3724



65.9355, 67.2280, 65.3273



60.4791, 67.2280, 74.0336



61.9033, 67.2280, 81.6808

Sweetspot

The Sweet Spot groups the original color and five complimentary colors.



67.4457, 67.2309, 72.3738



91.6765, 94.8233, 102.9348



68.3868, 67.4536, 84.2792



19.4342, 20.0074, 21.6983



0.0000, 0.0000, 0.0000



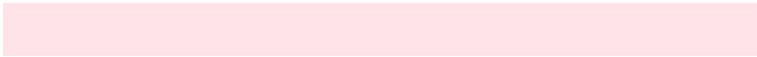
20.3446, 21.4041, 23.3091

Same Dimension

The Same Dimension uses a secret algorithm to generate beautiful new colors.



67.4457, 67.2309, 72.3738



83.3019, 82.0134, 87.9987



68.5207, 70.1828, 70.2604



14.4885, 14.4126, 15.5069



18.7634, 9.6396, 2.3830



1.4184, 0.7251, 0.3439

Inverse Universe

The Inverse Universe completely reimagines the original color for something new.



67.4457, 67.2309, 72.3738



83.3019, 82.0134, 87.9987



67.1549, 72.4208, 85.3029



14.4885, 14.4126, 15.5069



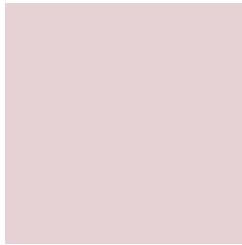
18.7634, 9.6396, 2.3830



1.4184, 0.7251, 0.3439

Previews

White Background



This preview shows how the XYZ color 67.4438, 67.2280, 72.3724 looks on a white background.

Color Contrast Check

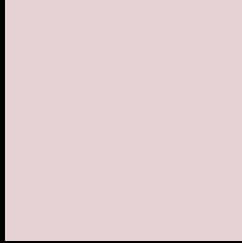
Large Text (above 18pt) WCAG AA × Fail

Any Text WCAG AA × Fail

Large Text (above 18pt) WCAG AAA × Fail

Any Text WCAG AAA × Fail

Black Background



This preview shows how the XYZ color 67.4438, 67.2280, 72.3724 looks on a black background.

Color Contrast Check

Large Text (above 18pt) WCAG AA ✓ Pass

Any Text WCAG AA ✓ Pass

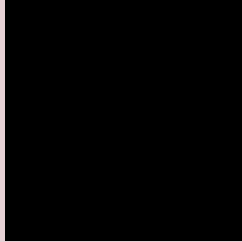
Large Text (above 18pt) WCAG AAA ✓ Pass

Any Text WCAG AAA ✓ Pass

If you want to check with other color combinations, try the [Color Contrast Checker](#).

XYZ 67.4438, 67.2280, 72.3724

Background



This preview shows how black text looks on a background with the XYZ color 67.4438, 67.2280, 72.3724.



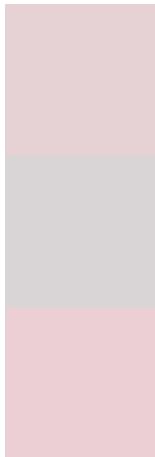
This preview shows how white text looks on a background with the XYZ color 67.4438, 67.2280,

72.3724.

Color Blindness Simulation

Color vision deficiency is a very complex topic, and I could not describe the different causes any better than Wikipedia does, so if you want to learn more, you should check out their [article about color blindness](#).

Dichromacy



Original Color

67.4438, 67.2280, 72.3724

Protanopia

64.6753, 67.2465, 73.8611

Deuteranopia

68.5840, 67.0919, 72.2861



Tritanopia

68.7224, 66.9964, 79.8305

Trichromacy



Original Color

67.4438, 67.2280, 72.3724

Protanomaly

65.8053, 67.4716, 73.1733

Deuteranomaly

68.1704, 67.2395, 72.3363

Tritanomaly

68.4291, 67.2680, 77.0876

Monochromacy



Original Color

67.4438, 67.2280, 72.3724

Achromatopsia

65.2694, 68.6685, 74.7800

Achromatomaly

65.8788, 67.8669, 73.9174

CSS Examples

Text

The CSS property to change the color of the text to XYZ 67.4438, 67.2280, 72.3724 is called "color". The color property can be set on classes, ids or directly on the HTML element.

This example shows how text in the color rgb(230, 209, 213) looks like.

```
.text, #text, p{  
    color:rgb(230, 209, 213)  
}
```

If you want to add a text shadow in that color use the text-shadow property, you can generate a text shadow directly with our [CSS Text Shadow Generator](#).

Here you see how black text with a 4 pixel rgb(230, 209, 213) colored shadow looks like.

```
.shadow{ text-shadow: 4px 4px 2px rgb(230, 209, 213) }
```

Border

The CSS property to change the border of an element to XYZ 67.4438, 67.2280, 72.3724 is called "border". The border property can be set on classes, ids or directly on the HTML element.

This example shows the color as border, it can be applied via the CSS property "border" or "border-color".

```
.border, #border, table{ border:4px solid rgb(230, 209, 213) }
```


If only the border color should be changed use the property `border-color`.

```
.border{ border-color:rgb(230, 209, 213) }
```

If you want to add a box shadow in that color use:

Here you see how a box with a 4 pixel `rgb(230, 209, 213)` colored shadow looks like.

```
.boxshadow{ -moz-box-shadow:4px 4px 4px  
4px rgb(230, 209, 213); -webkit-box-  
shadow:4px 4px 4px 4px rgb(230, 209, 213);  
box-shadow:4px 4px 4px 4px rgb(230, 209,  
213) }
```

Background

The CSS property to change the background color of an element to XYZ 67.4438, 67.2280, 72.3724 is called "background". The background property can be set on classes, ids or directly on the HTML element.

```
.background, #background, body{  
background: rgb(230, 209, 213) }
```

If only the background color should be changed can be used:

```
.background{ background-color: rgb(230,  
209, 213) }
```

This example shows the color as background, it is applied via the CSS property "background".

To optimize and compress your CSS code, you can use our [online CSS compressor and optimizer](#) based on csstidy. If you want to create a linear or radial gradient as background or border, check our [CSS Gradient Generator](#).

Hey! You found this booklet interesting? Support Converting Colors with the new Membership Option!

The pro membership hides all ads, plus gives you double the colors in the color bucket, and more awesome pro features!

[Learn more, Memberships starting at \\$2.50/m!](#)

**Follow me
on Twitter!**

@ConvertingColor