

Converting Colors

XYZ(67.4523, 66.9789, 61.6468)

Have a look what the booklet for
XYZ(67.4523, 66.9789, 61.6468)
contains.

XYZ(67.4447, 67.1018, 61.6218)	3
<i>Conversions</i>	4
<i>Details</i>	6
<i>Harmonies</i>	12
<i>Previews</i>	24
<i>Color Blindness Simulation</i>	28
<i>CSS Examples</i>	31

Color

**XYZ(67.4447, 67.1018,
61.6218)**

Conversions

Conversions Part 1

Format	Color
Hex	EDD0C4
RGB	237, 208, 196
RGB Percent	93%, 82%, 77%
CMY	0.0706, 0.1843, 0.2314
CMYK	0.00, 0.12, 0.17, 0.07
HSL	18°, 53%, 85%
HSV	18°, 17%, 93%
XYZ	67.4447, 67.1018, 61.6218
YIQ	215.3030, 21.1360, 2.4160

Conversions

Conversions Part 2

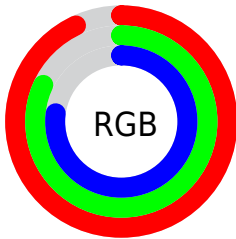
Format	Color
RYB	237, 213, 196
Decimal	15585476
CIELab	85.56, 8.23, 9.66
CIELCh	86, 12.694, 49.570
Yxy	67.1018, 0.3438, 0.3421
Android (android.graphics.Color)	4293775556 (0xFFEDD0C4)
YUV	215.3030, -9.5164, 19.0283
Hunter-Lab	81.9157, 3.6143, 12.7396

Details

The XYZ color **67.4447, 67.1018, 61.6218** is a light color, and the websafe version is hex **FFCCCC**. A complement of this color would be **64.9757, 71.6989, 90.5359**, and the grayscale version is **64.8506, 68.2279, 74.3001**.

A 20% lighter version of the original color is **94.7296, 99.8718, 107.2129**, and **35.4941, 34.8880, 30.4545** is the 20% darker color. If you saturate the color by 10%, you get **61.0849, 58.3633, 47.2275**, and if you desaturate by 10%, it is **74.6662, 76.8805, 78.4072**.

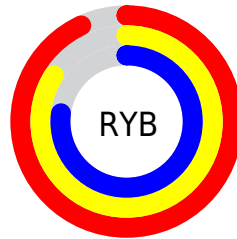
Distribution



Red (93%)

Green (82%)

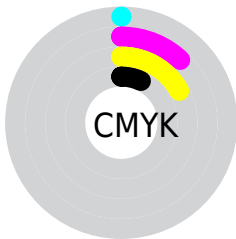
Blue (77%)



Red (93%)

Yellow (84%)

Blue (77%)

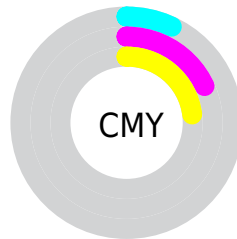


Cyan (0%)

Magenta (12%)

Yellow (17%)

Black (7%)



Cyan (7%)

Magenta (18%)

Yellow (23%)

Brightness & Saturation Gradients

These gradients show how the XYZ color 67.4447, 67.1018, 61.6218 changes by changing the brightness by 10 percent. The first figure shows a shift by +10% for each color and the second figure -10%.

Similar to the brightness gradients but the following saturation gradients show a change of the XYZ color 67.4447, 67.1018, 61.6218 by changing the saturation by 10% instead.

67.4447, 67.1018,
61.6218

67.4447, 67.1018,
61.6218

440.9337,
450.3070, 448.5197

49.7181, 49.1674,
44.2934

114.6037,
115.0663, 108.7450

35.4064, 34.7523,
30.5623

144.7668,
145.8651, 139.3769

24.1440, 23.4721,
20.0101

179.8061,
181.7208, 175.2803

15.5658, 14.9425,
12.2183

220.0871,
223.0179, 216.8738

9.3063, 8.7790,
6.7682

265.9749,
270.1406, 264.5760

5.0002, 4.5973,
3.2413

317.8351,

2.2822, 2.0130,

323.4735, 318.8053

1.2191

376.0329,
383.4008, 379.9804

■ 0.7855, 0.6150,
0.0000

■ 0.0000, 0.0000,
0.0000

■ 67.4447, 67.1018,
61.6218

■ 67.4447, 67.1018,
61.6218

■ 61.0849, 58.3633,
47.2275

■ 74.6662, 76.8805,
78.4072

■ 55.5480, 50.6214,
35.1104

■ 82.7753, 87.7233,
97.6820

■ 50.8003, 43.8422,
25.1540

■ 88.7352, 96.7446,
108.6045

■ 46.8034, 37.9869,
17.2291

■ 43.5155, 33.0135,
11.1931

■ 40.8902, 28.8767,
6.8842

■ 38.8747, 25.5265,
4.1133

■ 37.4037, 22.9054,
2.6336

■ 37.0776, 22.3093,
2.3519

Harmonies

Analogous

The Analogous color harmony consists of three colors that are next to each other on the color wheel.



69.1504, 67.1018, 67.8680



67.4447, 67.1018, 61.6218



64.7880, 67.1018, 58.5222

Triad

The Triadic color harmony groups three colors that are evenly spaced from another and form a triangle on the color wheel.



67.4447, 67.1018, 61.6218



58.4755, 67.1018, 70.2232



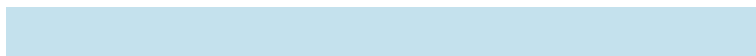
65.6549, 67.1018, 89.0812

Complementary

The Complementary color scheme is a pair of colors which are on the opposite of each other on the color wheel.



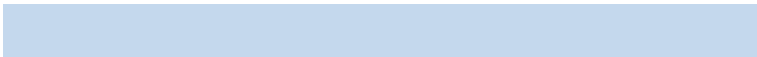
67.4447, 67.1018, 61.6218



64.9757, 71.6989, 90.5359

Split Complementary

Split-complementary colors differ from the complementary color scheme. The scheme consists of three colors, the original color and two neighbors of the complement color.



62.7790, 67.1018, 89.8313



67.4447, 67.1018, 61.6218



58.6918, 67.1018, 78.5154

Square

The Square scheme is like the rectangle color scheme, but the four colors are evenly spaced on the color wheel.



67.4447, 67.1018, 61.6218



59.6473, 67.1018, 63.2340



60.2471, 67.1018, 85.8381



68.0957, 67.1018, 83.8600

Rectangle

The Rectangle color scheme consists of four colors that form a rectangle on the color wheel.



67.4447, 67.1018, 61.6218



62.8603, 67.1018, 58.4865



60.2471, 67.1018, 85.8381



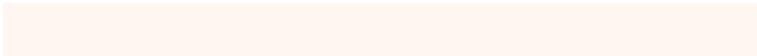
64.7051, 67.1018, 89.8788

Sweetspot

The Sweet Spot groups the original color and five complimentary colors.



67.4465, 67.1048, 61.6232



90.2552, 93.5871, 97.5086



68.3086, 62.9424, 80.0581



19.1787, 19.8441, 20.5411



0.0000, 0.0000, 0.0000



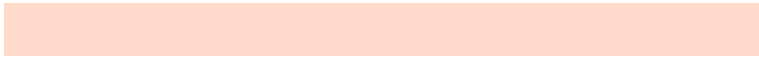
20.3446, 21.4041, 23.3091

Same Dimension

The Same Dimension uses a secret algorithm to generate beautiful new colors.



67.4465, 67.1048, 61.6232



76.6818, 75.1905, 66.0080



72.6650, 77.5417, 63.3627



15.4248, 15.7726, 15.7502



20.3414, 12.3769, 1.3169



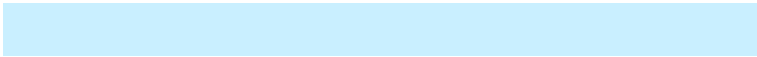
1.6779, 1.1330, 0.1303

Inverse Universe

The Inverse Universe completely reimagines the original color for something new.



64.9757, 71.6989, 90.5359



73.2191, 81.6210, 106.5031



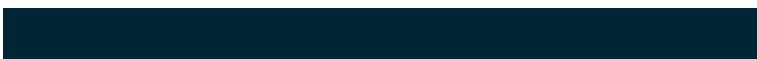
59.8553, 61.4579, 88.8291



15.1236, 16.3336, 19.2779



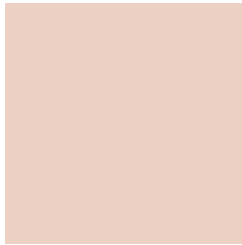
16.0700, 18.7870, 46.5222



1.3443, 1.6401, 3.6806

Previews

White Background



This preview shows how the XYZ color 67.4447, 67.1018, 61.6218 looks on a white background.

Color Contrast Check

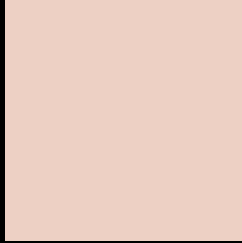
Large Text (above 18pt) WCAG AA × Fail

Any Text WCAG AA × Fail

Large Text (above 18pt) WCAG AAA × Fail

Any Text WCAG AAA × Fail

Black Background



This preview shows how the XYZ color 67.4447, 67.1018, 61.6218 looks on a black background.

Color Contrast Check

Large Text (above 18pt) WCAG AA ✓ Pass

Any Text WCAG AA ✓ Pass

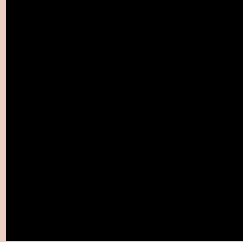
Large Text (above 18pt) WCAG AAA ✓ Pass

Any Text WCAG AAA ✓ Pass

If you want to check with other color combinations, try the [Color Contrast Checker](#).

XYZ 67.4447, 67.1018, 61.6218

Background



This preview shows how black text looks on a background with the XYZ color 67.4447, 67.1018, 61.6218.

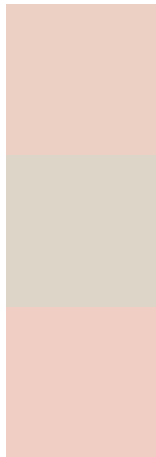


This preview shows how white text looks on a background with the XYZ color 67.4447, 67.1018,

Color Blindness Simulation

Color vision deficiency is a very complex topic, and I could not describe the different causes any better than Wikipedia does, so if you want to learn more, you should check out their [article about color blindness](#).

Dichromacy



Original Color

67.4447, 67.1018, 61.6218

Protanopia

63.9218, 67.0842, 63.6123

Deuteranopia

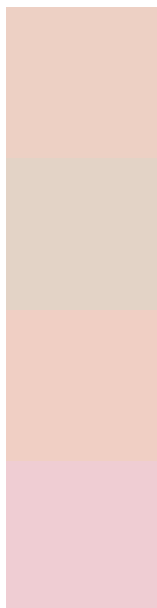
68.3107, 66.8289, 61.5235



Tritanopia

70.4463, 66.8783, 76.9060

Trichromacy



Original Color

67.4447, 67.1018, 61.6218

Protanomaly

65.1659, 66.9966, 62.9231

Deuteranomaly

68.2118, 67.1364, 61.5880

Tritanomaly

69.1858, 66.7165, 70.8591

Monochromacy



Original Color

67.4447, 67.1018, 61.6218

Achromatopsia

64.5905, 67.9542, 74.0022

Achromatomaly

65.3601, 67.3290, 69.2255

CSS Examples

Text

The CSS property to change the color of the text to XYZ 67.4447, 67.1018, 61.6218 is called "color". The color property can be set on classes, ids or directly on the HTML element.

This example shows how text in the color `rgb(237, 208, 196)` looks like.

```
.text, #text, p{  
    color:rgb(237, 208, 196)  
}
```

If you want to add a text shadow in that color use the text-shadow property, you can generate a text shadow directly with our [CSS Text Shadow Generator](#).

Here you see how black text with a 4 pixel rgb(237, 208, 196) colored shadow looks like.

```
.shadow{ text-shadow: 4px 4px 2px rgb(237, 208, 196) }
```

Border

The CSS property to change the border of an element to XYZ 67.4447, 67.1018, 61.6218 is called "border". The border property can be set on classes, ids or directly on the HTML element.

This example shows the color as border, it can be applied via the CSS property "border" or "border-color".

```
.border, #border, table{ border:4px solid rgb(237, 208, 196) }
```


If only the border color should be changed use the property `border-color`.

```
.border{ border-color:rgb(237, 208, 196) }
```

If you want to add a box shadow in that color use:

Here you see how a box with a 4 pixel `rgb(237, 208, 196)` colored shadow looks like.

```
.boxshadow{ -moz-box-shadow:4px 4px 4px 4px rgb(237, 208, 196); -webkit-box-shadow:4px 4px 4px 4px rgb(237, 208, 196); box-shadow:4px 4px 4px 4px rgb(237, 208, 196) }
```

Background

The CSS property to change the background color of an element to XYZ 67.4447, 67.1018, 61.6218 is called "background". The background property can be set on classes, ids or directly on the HTML element.

```
.background, #background, body{  
background: rgb(237, 208, 196) }
```

If only the background color should be changed can be used:

```
.background{ background-color: rgb(237,  
208, 196) }
```

This example shows the color as background, it is applied via the CSS property "background".

To optimize and compress your CSS code, you can use our [online CSS compressor and optimizer](#) based on csstidy. If you want to create a linear or radial gradient as background or border, check our [CSS Gradient Generator](#).

Hey! You found this booklet interesting? Support Converting Colors with the new Membership Option!

The pro membership hides all ads, plus gives you double the colors in the color bucket, and more awesome pro features!

[Learn more, Memberships starting at \\$2.50/m!](#)

**Follow me
on Twitter!**

@ConvertingColor