

Converting Colors

XYZ(67.4927, 67.6879, 59.6642)

Have a look what the booklet for
XYZ(67.4927, 67.6879, 59.6642)
contains.

XYZ(67.2399, 67.4112, 59.3369)	3
<i>Conversions</i>	4
<i>Details</i>	6
<i>Harmonies</i>	12
<i>Previews</i>	24
<i>Color Blindness Simulation</i>	28
<i>CSS Examples</i>	31

Color

**XYZ(67.2399, 67.4112,
59.3369)**

Conversions

Conversions Part 1

Format	Color
Hex	EDD1C0
RGB	237, 209, 192
RGB Percent	93%, 82%, 75%
CMY	0.0706, 0.1804, 0.2471
CMYK	0.00, 0.12, 0.19, 0.07
HSL	23°, 56%, 84%
HSV	23°, 19%, 93%
XYZ	67.2399, 67.4112, 59.3369
YIQ	215.4340, 22.1450, 0.6490

Conversions

Conversions Part 2

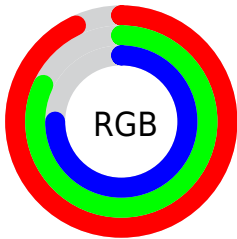
Format	Color
RYB	237, 219, 192
Decimal	15585728
CIELab	85.71, 7.11, 12.00
CIELCh	86, 13.949, 59.362
Yxy	67.4112, 0.3466, 0.3475
Android (android.graphics.Color)	4293775808 (0xFFEDD1C0)
YUV	215.4340, -11.5530, 18.9134
Hunter-Lab	82.1043, 2.5012, 14.6241

Details

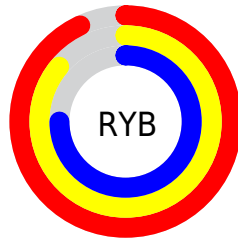
The XYZ color **67.2399, 67.4112, 59.3369** is a light color, and the websafe version is hex **FFCCCC**. A complement of this color would be **62.6170, 68.5056, 90.0438**, and the grayscale version is **64.9524, 68.3350, 74.4168**.

A 20% lighter version of the original color is **93.9433, 99.5573, 103.0721**, and **35.4376, 35.1305, 29.3392** is the 20% darker color. If you saturate the color by 10%, you get **61.3713, 59.5431, 45.4516**, and if you desaturate by 10%, it is **73.8699, 76.1241, 75.5638**.

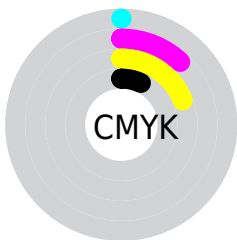
Distribution



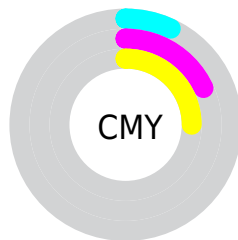
- Red (93%)
- Green (82%)
- Blue (75%)



- Red (93%)
- Yellow (86%)
- Blue (75%)



- Cyan (0%)
- Magenta (12%)
- Yellow (19%)
- Black (7%)





- Cyan (7%)
- Magenta (18%)
- Yellow (25%)

Brightness & Saturation Gradients


These gradients show how the XYZ color 67.2399, 67.4112, 59.3369 changes by changing the brightness by 10 percent. The first figure shows a shift by +10% for each color and the second figure -10%.


Similar to the brightness gradients but the following saturation gradients show a change of the XYZ color 67.2399, 67.4112, 59.3369 by changing the saturation by 10% instead.


 67.2399, 67.4112,
59.3369

 67.2399, 67.4112,
59.3369


440.2173,
451.4070, 439.8859

 49.5510, 49.4189,
42.4626


 114.3120,
115.5094, 105.4011

 35.2731, 34.9519,
29.1354

144.4259,
146.3841, 135.4280

 24.0408, 23.6258,
18.9368


179.4123,
182.3217, 170.6763

 15.4888, 15.0563,
11.4483

219.6363,
223.7066, 211.5644

 9.2517, 8.8589,
6.2513

265.4635,
270.9232, 258.5108

 4.9641, 4.6493,
2.9272

317.2592,

 2.2608, 2.0430,

324.3558, 311.9342

1.0576

375.3886,
384.3890, 372.2530

■ 0.7745, 0.6323,
0.0000

■ 0.0000, 0.0000,
0.0000

■ 67.2399, 67.4112,
59.3369

■ 67.2399, 67.4112,
59.3369

■ 61.3713, 59.5431,
45.4516

■ 73.8699, 76.1241,
75.5638

■ 56.2293, 52.4846,
33.7942

■ 81.2833, 85.6977,
94.2301

■ 51.7846, 46.2111,
24.2478

■ 88.1759, 95.6259,
108.4180

■ 48.0032, 40.6933,
16.6831

■ 88.7352, 96.7446,
108.6045

■ 44.8482, 35.8998,
10.9564

■ 42.2783, 31.7965,
6.9042

■ 40.2458, 28.3457,
4.3333

■ 38.6839, 25.5009,
2.9523

■ 38.5442, 25.2426,
2.8408

Harmonies

Analogous

The Analogous color harmony consists of three colors that are next to each other on the color wheel.



69.5518, 67.4112, 65.1418



67.2399, 67.4112, 59.3369



64.1405, 67.4112, 57.2411

Triad

The Triadic color harmony groups three colors that are evenly spaced from another and form a triangle on the color wheel.



67.2399, 67.4112, 59.3369



58.1493, 67.4112, 73.2044



67.1181, 67.4112, 89.7475

Complementary

The Complementary color scheme is a pair of colors which are on the opposite of each other on the color wheel.



67.2399, 67.4112, 59.3369



62.6170, 68.5056, 90.0438

Split Complementary

Split-complementary colors differ from the complementary color scheme. The scheme consists of three colors, the original color and two neighbors of the complement color.



64.0042, 67.4112, 92.3437



67.2399, 67.4112, 59.3369



58.8885, 67.4112, 82.3268

Square

The Square scheme is like the rectangle color scheme, but the four colors are evenly spaced on the color wheel.



67.2399, 67.4112, 59.3369



58.9529, 67.4112, 64.8301



61.0058, 67.4112, 89.5246



69.4798, 67.4112, 82.6923

Rectangle

The Rectangle color scheme consists of four colors that form a rectangle on the color wheel.



67.2399, 67.4112, 59.3369



62.0660, 67.4112, 58.0836



61.0058, 67.4112, 89.5246



66.1214, 67.4112, 91.1953

Sweetspot

The Sweet Spot groups the original color and five complimentary colors.



67.2417, 67.4142, 59.3383



89.7219, 93.1300, 95.4517



66.7599, 60.8985, 76.2944



19.0845, 19.7784, 20.1310



0.0000, 0.0000, 0.0000



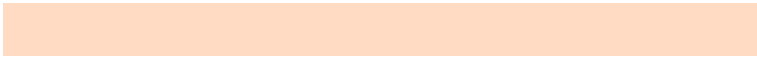
20.3446, 21.4041, 23.3091

Same Dimension

The Same Dimension uses a secret algorithm to generate beautiful new colors.



67.2417, 67.4142, 59.3383



76.4483, 75.6706, 63.0103



73.0159, 78.9627, 61.2631



15.5319, 15.9868, 15.7859



21.1601, 14.0145, 1.5898



1.7516, 1.2805, 0.1548

Inverse Universe

The Inverse Universe completely reimagines the original color for something new.



62.6170, 68.5056, 90.0438



69.9990, 77.1885, 105.8173



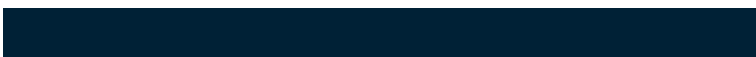
57.2192, 57.7100, 88.2445



15.0118, 16.1100, 19.2406



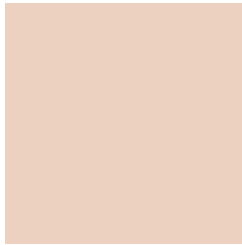
14.2101, 15.0672, 45.9023



1.2080, 1.3674, 3.6351

Previews

White Background



This preview shows how the XYZ color 67.2399, 67.4112, 59.3369 looks on a white background.

Color Contrast Check

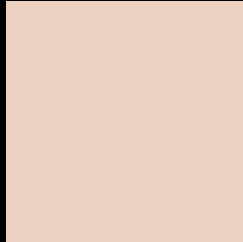
Large Text (above 18pt) WCAG AA × Fail

Any Text WCAG AA × Fail

Large Text (above 18pt) WCAG AAA × Fail

Any Text WCAG AAA × Fail

Black Background



This preview shows how the XYZ color 67.2399, 67.4112, 59.3369 looks on a black background.

Color Contrast Check

Large Text (above 18pt) WCAG AA ✓ Pass

Any Text WCAG AA ✓ Pass

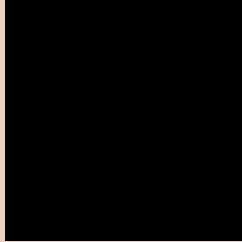
Large Text (above 18pt) WCAG AAA ✓ Pass

Any Text WCAG AAA ✓ Pass

If you want to check with other color combinations, try the [Color Contrast Checker](#).

XYZ 67.2399, 67.4112, 59.3369

Background



This preview shows how black text looks on a background with the XYZ color 67.2399, 67.4112, 59.3369.



This preview shows how white text looks on a background with the XYZ color 67.2399, 67.4112,

Color Blindness Simulation

Color vision deficiency is a very complex topic, and I could not describe the different causes any better than Wikipedia does, so if you want to learn more, you should check out their [article about color blindness](#).

Dichromacy



Original Color

67.2399, 67.4112, 59.3369

Protanopia

64.2156, 67.6762, 60.7172

Deuteranopia

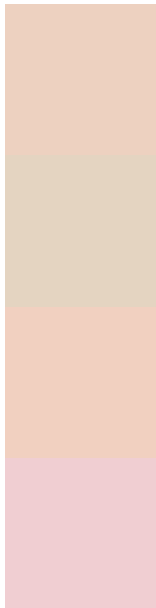
68.7894, 67.4861, 59.2697



Tritanopia

71.1581, 67.5839, 77.7012

Trichromacy



Original Color

67.2399, 67.4112, 59.3369

Protanomaly

65.1640, 67.4312, 60.0331

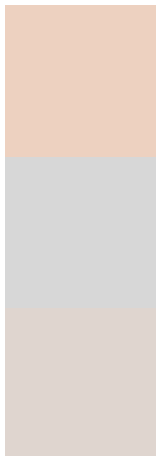
Deuteranomaly

68.3459, 67.6183, 59.3186

Tritanomaly

69.6393, 67.3210, 70.2966

Monochromacy



Original Color

67.2399, 67.4112, 59.3369

Achromatopsia

64.5905, 67.9542, 74.0022

Achromatomaly

65.4882, 67.7815, 68.6630

CSS Examples

Text

The CSS property to change the color of the text to XYZ 67.2399, 67.4112, 59.3369 is called "color". The color property can be set on classes, ids or directly on the HTML element.

This example shows how text in the color `rgb(237, 209, 192)` looks like.

```
.text, #text, p{  
    color:rgb(237, 209, 192)  
}
```

If you want to add a text shadow in that color use the text-shadow property, you can generate a text shadow directly with our [CSS Text Shadow Generator](#).

Here you see how black text with a 4 pixel rgb(237, 209, 192) colored shadow looks like.

```
.shadow{ text-shadow: 4px 4px 2px rgb(237, 209, 192) }
```

Border

The CSS property to change the border of an element to XYZ 67.2399, 67.4112, 59.3369 is called "border". The border property can be set on classes, ids or directly on the HTML element.

This example shows the color as border, it can be applied via the CSS property "border" or "border-color".

```
.border, #border, table{ border:4px solid rgb(237, 209, 192) }
```


If only the border color should be changed use the property `border-color`.

```
.border{ border-color:rgb(237, 209, 192) }
```

If you want to add a box shadow in that color use:

Here you see how a box with a 4 pixel `rgb(237, 209, 192)` colored shadow looks like.

```
.boxshadow{ -moz-box-shadow:4px 4px 4px  
4px rgb(237, 209, 192); -webkit-box-  
shadow:4px 4px 4px 4px rgb(237, 209, 192);  
box-shadow:4px 4px 4px 4px rgb(237, 209,  
192) }
```

Background

The CSS property to change the background color of an element to XYZ 67.2399, 67.4112, 59.3369 is called "background". The background property can be set on classes, ids or directly on the HTML element.

```
.background, #background, body{  
background: rgb(237, 209, 192) }
```

If only the background color should be changed can be used:

```
.background{ background-color: rgb(237,  
209, 192) }
```

This example shows the color as background, it is applied via the CSS property "background".

To optimize and compress your CSS code, you can use our [online CSS compressor and optimizer](#) based on csstidy. If you want to create a linear or radial gradient as background or border, check our [CSS Gradient Generator](#).

Hey! You found this booklet interesting? Support Converting Colors with the new Membership Option!

The pro membership hides all ads, plus gives you double the colors in the color bucket, and more awesome pro features!

[Learn more, Memberships starting at \\$2.50/m!](#)

**Follow me
on Twitter!**

@ConvertingColor