

Converting Colors

XYZ(67.5233, 68.1531, 62.1203)

Have a look what the booklet for
XYZ(67.5233, 68.1531, 62.1203)
contains.

XYZ(67.6333, 68.2819, 62.4384)	3
<i>Conversions</i>	4
<i>Details</i>	6
<i>Harmonies</i>	12
<i>Previews</i>	24
<i>Color Blindness Simulation</i>	28
<i>CSS Examples</i>	31

Color

**XYZ(67.6333, 68.2819,
62.4384)**

Conversions

Conversions Part 1

Format	Color
Hex	EBD3C5
RGB	235, 211, 197
RGB Percent	92%, 83%, 77%
CMY	0.0784, 0.1725, 0.2274
CMYK	0.00, 0.10, 0.16, 0.08
HSL	22°, 49%, 85%
HSV	22°, 16%, 92%
XYZ	67.6333, 68.2819, 62.4384
YIQ	216.5800, 18.7980, 0.7340

Conversions

Conversions Part 2

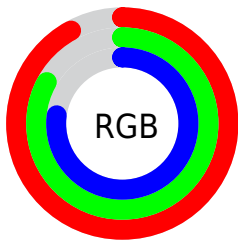
Format	Color
R _Y B	235, 219, 197
Decimal	15455173
CIE Lab	86.15, 6.10, 9.96
CIE LCh	86, 11.674, 58.518
Yxy	68.2819, 0.3410, 0.3442
Android (android.graphics.Color)	4293645253 (0xFFEBD3C5)
YUV	216.5800, -9.6529, 16.1543
Hunter-Lab	82.6329, 1.4911, 13.0428

Details

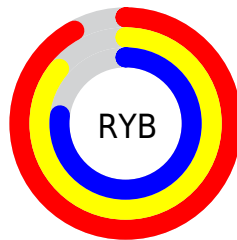
The XYZ color **67.6333, 68.2819, 62.4384** is a light color, and the websafe version is hex **FFCCCC**. A complement of this color would be **63.8775, 69.5800, 88.6616**, and the grayscale version is **65.7224, 69.1451, 75.2990**.

A 20% lighter version of the original color is **94.8894, 99.9358, 108.0543**, and **35.6053, 35.6808, 30.9971** is the 20% darker color. If you saturate the color by 10%, you get **61.6301, 60.2537, 48.1720**, and if you desaturate by 10%, it is **74.4004, 77.1648, 79.0320**.

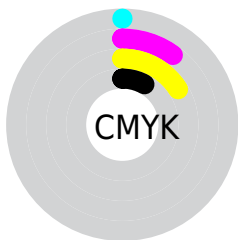
Distribution



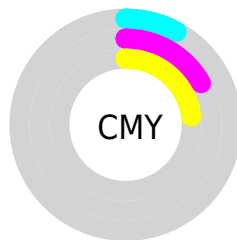
- Red (92%)
- Green (83%)
- Blue (77%)



- Red (92%)
- Yellow (86%)
- Blue (77%)



- Cyan (0%)
- Magenta (10%)
- Yellow (16%)
- Black (8%)



- Cyan (8%)
- Magenta (17%)
- Yellow (23%)

Brightness & Saturation Gradients

These gradients show how the XYZ color 67.6333, 68.2819, 62.4384 changes by changing the brightness by 10 percent. The first figure shows a shift by +10% for each color and the second figure -10%.

Similar to the brightness gradients but the following saturation gradients show a change of the XYZ color 67.6333, 68.2819, 62.4384 by changing the saturation by 10% instead.

67.6333, 68.2819,
62.4384

67.6333, 68.2819,
62.4384

441.5928,
454.4942, 451.5802

49.8721, 50.1271,
44.9490

114.8722,
116.7553, 109.9366

35.5291, 35.5144,
31.0746

145.0805,
147.8428, 140.7825

24.2392, 24.0594,
20.3967

180.1687,
184.0099, 176.9176

15.6368, 15.3777,
12.4968

220.5019,
225.6410, 218.7604

9.3567, 9.0849,
6.9563

266.4455,
273.1206, 266.7295

5.0336, 4.7966,
3.3568

318.3650,

2.3019, 2.1284,

326.8331, 321.2435

1.2796

376.6256,
387.1628, 382.7209

■ 0.7957, 0.6805,
0.0450

■ 0.0000, 0.0000,
0.0000

■ 67.6333, 68.2819,
62.4384

■ 67.6333, 68.2819,
62.4384

■ 61.6301, 60.2537,
48.1720

■ 74.4004, 77.1648,
79.0320

■ 56.3568, 53.0451,
36.1232

■ 81.9527, 86.9182,
98.0469

■ 51.7845, 46.6315,
26.1801

■ 88.0713, 96.4023,
108.5734

■ 47.8806, 40.9839,
18.2194

■ 44.6093, 36.0710,
12.1044

■ 41.9308, 31.8592,
7.6810

■ 39.8000, 28.3117,
4.7695

■ 38.1628, 25.3866,
3.1472

■ 37.6376, 24.4150,
2.7289

Harmonies

Analogous

The Analogous color harmony consists of three colors that are next to each other on the color wheel.



69.5423, 68.2819, 67.5098



67.6333, 68.2819, 62.4384



65.0335, 68.2819, 60.5256

Triad

The Triadic color harmony groups three colors that are evenly spaced from another and form a triangle on the color wheel.



67.6333, 68.2819, 62.4384



59.8749, 68.2819, 73.9657



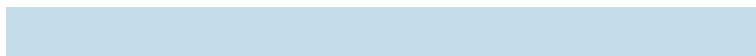
67.3959, 68.2819, 88.1093

Complementary

The Complementary color scheme is a pair of colors which are on the opposite of each other on the color wheel.



67.6333, 68.2819, 62.4384



63.8775, 69.5800, 88.6616

Split Complementary

Split-complementary colors differ from the complementary color scheme. The scheme consists of three colors, the original color and two neighbors of the complement color.



64.7665, 68.2819, 90.1279



67.6333, 68.2819, 62.4384



60.4688, 68.2819, 81.6318

Square

The Square scheme is like the rectangle color scheme, but the four colors are evenly spaced on the color wheel.



67.6333, 68.2819, 62.4384



60.5962, 68.2819, 66.8907



62.2412, 68.2819, 87.6818



69.4026, 68.2819, 82.3386

Rectangle

The Rectangle color scheme consists of four colors that form a rectangle on the color wheel.



67.6333, 68.2819, 62.4384



63.2741, 68.2819, 61.1911



62.2412, 68.2819, 87.6818



66.5533, 68.2819, 89.2660

Sweetspot

The Sweet Spot groups the original color and five complimentary colors.



67.6352, 68.2850, 62.4398



90.5497, 94.1761, 97.6067



67.2881, 62.8196, 77.0330



19.2501, 19.9869, 20.5649



0.0000, 0.0000, 0.0000



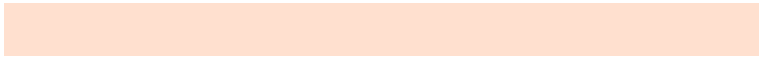
20.3446, 21.4041, 23.3091

Same Dimension

The Same Dimension uses a secret algorithm to generate beautiful new colors.



67.6352, 68.2850, 62.4398



79.2123, 79.2725, 69.8696



72.6180, 78.2507, 64.1008



15.5201, 15.9632, 15.7819



21.0585, 13.8113, 1.5559



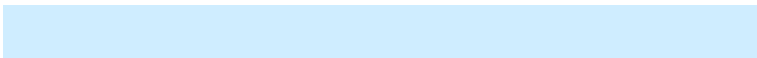
1.7428, 1.2629, 0.1519

Inverse Universe

The Inverse Universe completely reimagines the original color for something new.



63.8775, 69.5800, 88.6616



73.9826, 81.0728, 106.3571



59.1584, 60.1418, 87.0885



15.0240, 16.1345, 19.2447



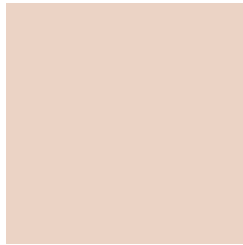
14.3999, 15.4468, 45.9655



1.2221, 1.3956, 3.6398

Previews

White Background



This preview shows how the XYZ color 67.6333, 68.2819, 62.4384 looks on a white background.

Color Contrast Check

Large Text (above 18pt) WCAG AA × Fail

Any Text WCAG AA × Fail

Large Text (above 18pt) WCAG AAA × Fail

Any Text WCAG AAA × Fail

Black Background



This preview shows how the XYZ color 67.6333, 68.2819, 62.4384 looks on a black background.

Color Contrast Check

Large Text (above 18pt) WCAG AA ✓ Pass

Any Text WCAG AA ✓ Pass

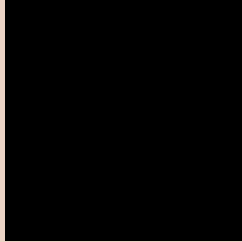
Large Text (above 18pt) WCAG AAA ✓ Pass

Any Text WCAG AAA ✓ Pass

If you want to check with other color combinations, try the [Color Contrast Checker](#).

XYZ 67.6333, 68.2819, 62.4384

Background



This preview shows how black text looks on a background with the XYZ color 67.6333, 68.2819, 62.4384.



This preview shows how white text looks on a background with the XYZ color 67.6333, 68.2819,

Color Blindness Simulation

Color vision deficiency is a very complex topic, and I could not describe the different causes any better than Wikipedia does, so if you want to learn more, you should check out their [article about color blindness](#).

Dichromacy



Original Color

67.6333, 68.2819, 62.4384

Protanopia

65.0407, 68.4124, 63.8097

Deuteranopia

69.7111, 68.2437, 62.9243



Tritanopia

70.8920, 68.1305, 79.2261

Trichromacy



Original Color

67.6333, 68.2819, 62.4384

Protanomaly

65.9182, 68.5012, 63.1739

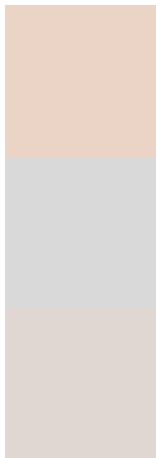
Deuteranomaly

68.9287, 68.2034, 62.9577

Tritanomaly

69.6185, 67.9713, 73.0688

Monochromacy



Original Color

67.6333, 68.2819, 62.4384

Achromatopsia

65.9525, 69.3872, 75.5626

Achromatomaly

66.6738, 69.1013, 70.7966

CSS Examples

Text

The CSS property to change the color of the text to XYZ 67.6333, 68.2819, 62.4384 is called "color". The color property can be set on classes, ids or directly on the HTML element.

This example shows how text in the color `rgb(235, 211, 197)` looks like.

```
.text, #text, p{  
    color:rgb(235, 211, 197)  
}
```

If you want to add a text shadow in that color use the text-shadow property, you can generate a text shadow directly with our [CSS Text Shadow Generator](#).

Here you see how black text with a 4 pixel rgb(235, 211, 197) colored shadow looks like.

```
.shadow{ text-shadow: 4px 4px 2px rgb(235, 211, 197) }
```

Border

The CSS property to change the border of an element to XYZ 67.6333, 68.2819, 62.4384 is called "border". The border property can be set on classes, ids or directly on the HTML element.

This example shows the color as border, it can be applied via the CSS property "border" or "border-color".

```
.border, #border, table{ border:4px solid rgb(235, 211, 197) }
```


If only the border color should be changed use the property `border-color`.

```
.border{ border-color:rgb(235, 211, 197) }
```

If you want to add a box shadow in that color use:

Here you see how a box with a 4 pixel `rgb(235, 211, 197)` colored shadow looks like.

```
.boxshadow{ -moz-box-shadow:4px 4px 4px  
4px rgb(235, 211, 197); -webkit-box-  
shadow:4px 4px 4px 4px rgb(235, 211, 197);  
box-shadow:4px 4px 4px 4px rgb(235, 211,  
197) }
```

Background

The CSS property to change the background color of an element to XYZ 67.6333, 68.2819, 62.4384 is called "background". The background property can be set on classes, ids or directly on the HTML element.

```
.background, #background, body{  
background: rgb(235, 211, 197) }
```

If only the background color should be changed can be used:

```
.background{ background-color: rgb(235,  
211, 197) }
```

This example shows the color as background, it is applied via the CSS property "background".

To optimize and compress your CSS code, you can use our [online CSS compressor and optimizer](#) based on csstidy. If you want to create a linear or radial gradient as background or border, check our [CSS Gradient Generator](#).

Hey! You found this booklet interesting? Support Converting Colors with the new Membership Option!

The pro membership hides all ads, plus gives you double the colors in the color bucket, and more awesome pro features!

[Learn more, Memberships starting at \\$2.50/m!](#)

**Follow me
on Twitter!**

@ConvertingColor