

# Converting Colors

XYZ(67.5407, 58.5143, 87.0915)

Have a look what the booklet for XYZ(67.5407, 58.5143, 87.0915) contains.

- XYZ(67.5407, 58.5143, 87.0915) ..... 3**
- Conversions* ..... 4**
- Details* ..... 6**
- Harmonies* ..... 12**
- Previews* ..... 24**
- Color Blindness Simulation* ..... 28**
- CSS Examples* ..... 31**

# Color

**XYZ(67.5407, 58.5143,  
87.0915)**

# Conversions

## Conversions Part 1

| <b>Format</b> | <b>Color</b>               |
|---------------|----------------------------|
| Hex           | EEB8EC                     |
| RGB           | 238, 184, 236              |
| RGB Percent   | 93%, 72%, 93%              |
| CMY           | 0.0667, 0.2784, 0.0745     |
| CMYK          | 0.00, 0.23, 0.01, 0.07     |
| HSL           | 302°, 61%, 83%             |
| HSV           | 302°, 23%, 93%             |
| XYZ           | 67.5407, 58.5143, 87.0915  |
| YIQ           | 206.0740, 15.4920, 27.6200 |

# Conversions

## Conversions Part 2

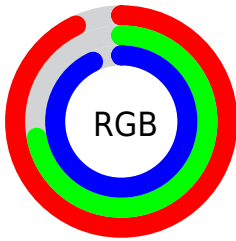
| <b>Format</b>                       | <b>Color</b>                  |
|-------------------------------------|-------------------------------|
| R <sub>Y</sub> B                    | 238, 184, 236                 |
| Decimal                             | 15644908                      |
| CIE Lab                             | 81.02, 27.98, -18.37          |
| CIE LCh                             | 81, 33.468, 326.709           |
| Yxy                                 | 58.5143, 0.3169,<br>0.2745    |
| Android<br>(android.graphics.Color) | 4293834988<br>(0xFFEEB8EC)    |
| YUV                                 | 206.0740, 14.7535,<br>27.9991 |
| Hunter-Lab                          | 76.4946, 23.7404,<br>-13.9572 |

# Details

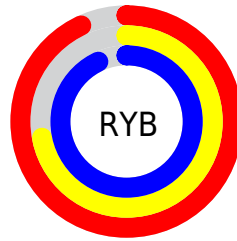
The XYZ color **67.5407, 58.5143, 87.0915** is a light color, and the websafe version is hex **FFCCFF**. A complement of this color would be **59.2070, 74.8863, 57.7916**, and the grayscale version is **58.6167, 61.6694, 67.1579**.

A 20% lighter version of the original color is **90.4501, 90.8002, 107.3667**, and **35.5123, 29.2056, 46.9456** is the 20% darker color. If you saturate the color by 10%, you get **62.8795, 49.3953, 84.9079**, and if you desaturate by 10%, it is **73.0378, 69.3020, 89.5581**.

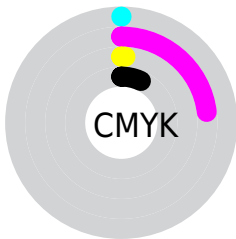
# Distribution



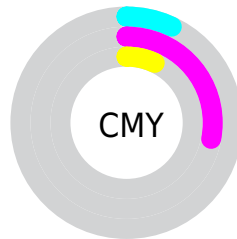
- Red (93%)
- Green (72%)
- Blue (93%)



- Red (93%)
- Yellow (72%)
- Blue (93%)



- Cyan (0%)
- Magenta (23%)
- Yellow (1%)
- Black (7%)



- Cyan (7%)
- Magenta (28%)
- Yellow (7%)

# Brightness & Saturation Gradients

These gradients show how the XYZ color 67.5407, 58.5143, 87.0915 changes by changing the brightness by 10 percent. The first figure shows a shift by +10% for each color and the second figure -10%.

Similar to the brightness gradients but the following saturation gradients show a change of the XYZ color 67.5407, 58.5143, 87.0915 by changing the saturation by 10% instead.



67.5407, 58.5143,  
87.0915

67.5407, 58.5143,  
87.0915

441.2693,  
419.0996, 538.8475

49.7965, 42.2223,  
65.0109

114.7404,  
102.6714, 145.1917

35.4688, 29.2754,  
47.0185

144.9265,  
131.3053, 182.0483

24.1925, 19.2892,  
32.6958

179.9907,  
164.8219, 224.6673

15.6020, 11.8795,  
21.6243

220.2982,  
203.6056, 273.4673

9.3320, 6.6616,  
13.3854

266.2145,  
248.0408, 328.8667

5.0172, 3.2514,  
7.5607

318.1049,

2.2922, 1.2644,

298.5120, 391.2842

3.7314

376.3347,  
355.4034, 461.1383

■ 0.7907, 0.1134,  
1.4792

■ 0.0000, 0.0000,  
0.2024

■ 67.5407, 58.5143,  
87.0915

■ 67.5407, 58.5143,  
87.0915

■ 62.8795, 49.3953,  
84.9079

■ 73.0378, 69.3020,  
89.5581

■ 59.0072, 41.8543,  
82.9898

■ 79.4042, 81.8281,  
92.3170

■ 55.8805, 35.8033,  
81.3233

■ 86.5481, 95.9085,  
95.3381

■ 53.4495, 31.1429,  
79.8919

■ 86.6785, 95.9606,  
96.0246

51.6586, 27.7616,  
78.6768

86.8095, 96.0130,  
96.7144

50.4434, 25.5307,  
77.6568

86.9411, 96.0657,  
97.4075

49.7261, 24.2945,  
76.8059

87.0733, 96.1186,  
98.1040

49.4290, 23.8449,  
76.2614

87.2062, 96.1717,  
98.8039

87.3398, 96.2252,  
99.5071

# Harmonies

## Analogous

The Analogous color harmony consists of three colors that are next to each other on the color wheel.



61.8360, 58.5143, 104.3415



67.5407, 58.5143, 87.0915



70.0400, 58.5143, 65.9327

# Triad

The Triadic color harmony groups three colors that are evenly spaced from another and form a triangle on the color wheel.



67.5407, 58.5143, 87.0915



56.3861, 58.5143, 32.6524



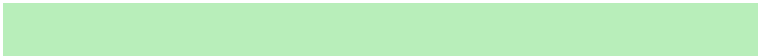
44.5206, 58.5143, 82.4917

# Complementary

The Complementary color scheme is a pair of colors which are on the opposite of each other on the color wheel.



67.5407, 58.5143, 87.0915



59.2070, 74.8863, 57.7916

# Split Complementary

Split-complementary colors differ from the complementary color scheme. The scheme consists of three colors, the original color and two neighbors of the complement color.



43.3222, 58.5143, 61.5420



67.5407, 58.5143, 87.0915



49.8279, 58.5143, 35.2932

# Square

The Square scheme is like the rectangle color scheme, but the four colors are evenly spaced on the color wheel.



67.5407, 58.5143, 87.0915



63.2718, 58.5143, 36.7947



45.1847, 58.5143, 44.9428



48.6042, 58.5143, 101.3211



# Rectangle

The Rectangle color scheme consists of four colors that form a rectangle on the color wheel.



67.5407, 58.5143, 87.0915



69.4101, 58.5143, 53.3378



45.1847, 58.5143, 44.9428



43.7825, 58.5143, 75.3514

# Sweetspot

The Sweet Spot groups the original color and five complimentary colors.



67.5425, 58.5169, 87.0928



89.5113, 89.0928, 106.5295



52.7769, 50.8712, 87.9275



19.0621, 18.8786, 22.7597



0.0000, 0.0000, 0.0000



20.3446, 21.4041, 23.3091



# Same Dimension

The Same Dimension uses a secret algorithm to generate beautiful new colors.



67.5425, 58.5169, 87.0928



76.4725, 63.4979, 100.6951



63.9359, 57.0742, 68.1005



16.4275, 16.0207, 19.8074



27.5872, 13.3073, 42.6044



2.3028, 1.1102, 3.5856



# Inverse Universe

The Inverse Universe completely reimagines the original color for something new.



67.5425, 58.5169, 87.0928



76.4725, 63.4979, 100.6951



62.3287, 76.1350, 74.2304



16.4275, 16.0207, 19.8074



27.5872, 13.3073, 42.6044



2.3028, 1.1102, 3.5856



# Previews

## White Background



This preview shows how the XYZ color 67.5407, 58.5143, 87.0915 looks on a white background.

## Color Contrast Check

Large Text (above 18pt) WCAG AA × Fail

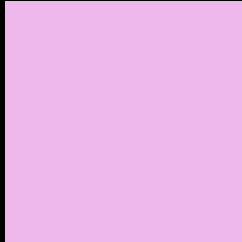
Any Text WCAG AA × Fail

Large Text (above 18pt) WCAG AAA × Fail

Any Text WCAG AAA × Fail



# Black Background



This preview shows how the XYZ color 67.5407, 58.5143, 87.0915 looks on a black background.

## Color Contrast Check

Large Text (above 18pt) WCAG AA ✓ Pass

Any Text WCAG AA ✓ Pass

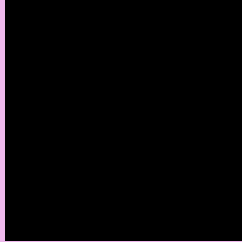
Large Text (above 18pt) WCAG AAA ✓ Pass

Any Text WCAG AAA ✓ Pass

If you want to check with other color combinations, try the [Color Contrast Checker](#).

**XYZ 67.5407, 58.5143, 87.0915**

## **Background**



This preview shows how black text looks on a background with the XYZ color 67.5407, 58.5143, 87.0915.



This preview shows how white text looks on a background with the XYZ color 67.5407, 58.5143,



# Color Blindness Simulation

Color vision deficiency is a very complex topic, and I could not describe the different causes any better than Wikipedia does, so if you want to learn more, you should check out their [article about color blindness](#).

## Dichromacy



### Original Color

67.5407, 58.5143, 87.0915

### Protanopia

58.9286, 59.1003, 96.2973

### Deuteranopia

60.2711, 58.9948, 86.0524



## Tritanopia

63.2442, 58.6790, 65.1196

# Trichromacy



## Original Color

67.5407, 58.5143, 87.0915



## Protanomaly

61.4819, 58.4645, 92.8384



## Deuteranomaly

62.7585, 58.6029, 86.6010



## Tritanomaly

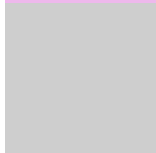
64.6388, 58.5865, 72.8672

# Monochromacy



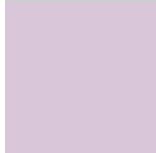
## Original Color

67.5407, 58.5143, 87.0915



## Achromatopsia

58.6655, 61.7207, 67.2138



## Achromatomaly

61.6319, 60.3033, 74.0370

# CSS Examples

## Text

The CSS property to change the color of the text to XYZ 67.5407, 58.5143, 87.0915 is called "color". The color property can be set on classes, ids or directly on the HTML element.

This example shows how text in the color `rgb(238, 184, 236)` looks like.

```
.text, #text, p{  
    color:rgb(238, 184, 236)  
}
```

If you want to add a text shadow in that color use the text-shadow property, you can generate a text shadow directly with our [CSS Text Shadow Generator](#).

Here you see how black text with a 4 pixel rgb(238, 184, 236) colored shadow looks like.

```
.shadow{ text-shadow: 4px 4px 2px rgb(238, 184, 236) }
```

## Border

The CSS property to change the border of an element to XYZ 67.5407, 58.5143, 87.0915 is called "border". The border property can be set on classes, ids or directly on the HTML element.

This example shows the color as border, it can be applied via the CSS property "border" or "border-color".

```
.border, #border, table{ border:4px solid rgb(238, 184, 236) }
```



If only the border color should be changed use the property `border-color`.

```
.border{ border-color:rgb(238, 184, 236) }
```

If you want to add a box shadow in that color use:

Here you see how a box with a 4 pixel `rgb(238, 184, 236)` colored shadow looks like.

```
.boxshadow{ -moz-box-shadow:4px 4px 4px  
4px rgb(238, 184, 236); -webkit-box-  
shadow:4px 4px 4px 4px rgb(238, 184, 236);  
box-shadow:4px 4px 4px 4px rgb(238, 184,  
236) }
```

# Background

The CSS property to change the background color of an element to XYZ 67.5407, 58.5143, 87.0915 is called "background". The background property can be set on classes, ids or directly on the HTML element.

```
.background, #background, body{  
background: rgb(238, 184, 236) }
```

If only the background color should be changed can be used:

```
.background{ background-color: rgb(238,  
184, 236) }
```

This example shows the color as background, it is applied via the CSS property "background".

To optimize and compress your CSS code, you can use our [online CSS compressor and optimizer](#) based on csstidy. If you want to create a linear or radial gradient as background or border, check our [CSS Gradient Generator](#).

Hey! You found this booklet interesting? Support Converting Colors with the new Membership Option!

The pro membership hides all ads, plus gives you double the colors in the color bucket, and more awesome pro features!

**[Learn more, Memberships starting at \\$2.50/m!](#)**

**Follow me  
on Twitter!**

@ConvertingColor