

# Converting Colors

XYZ(67.6698, 66.5436, 71.2759)

Have a look what the booklet for  
XYZ(67.6698, 66.5436, 71.2759)  
contains.

<b>XYZ(67.8008, 66.7028, 71.5888)</b> .....	3
<b><i>Conversions</i></b> .....	4
<b><i>Details</i></b> .....	6
<b><i>Harmonies</i></b> .....	12
<b><i>Previews</i></b> .....	24
<b><i>Color Blindness Simulation</i></b> .....	28
<b><i>CSS Examples</i></b> .....	31

# Color

**XYZ(67.8008, 66.7028,  
71.5888)**

# Conversions

## Conversions Part 1

Format	Color
Hex	E9CFD4
RGB	233, 207, 212
RGB Percent	91%, 81%, 83%
CMY	0.0863, 0.1882, 0.1686
CMYK	0.00, 0.11, 0.09, 0.09
HSL	348°, 37%, 86%
HSV	348°, 11%, 91%
XYZ	67.8008, 66.7028, 71.5888
YIQ	215.3440, 13.8910, 7.0670

# Conversions

## Conversions Part 2

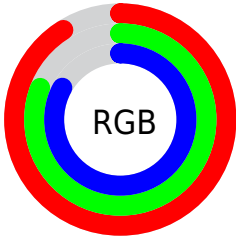
<b>Format</b>	<b>Color</b>
<b>R<sub>YB</sub></b>	233, 207, 212
Decimal	15323092
CIE <sub>Lab</sub>	85.35, 9.89, 0.84
CIE <sub>LCh</sub>	85, 9.921, 4.843
Yxy	66.7028, 0.3290, 0.3237
Android (android.graphics.Color)	4293513172 (0xFFE9CFD4)
YUV	215.3440, -1.6486, 15.4843
Hunter-Lab	81.6718, 5.2583, 5.2000

# Details

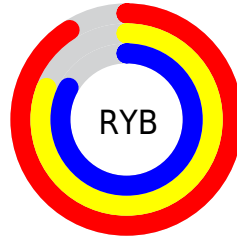
The XYZ color **67.8008, 66.7028, 71.5888** is a light color, and the websafe version is hex **FFCCCC**. A complement of this color would be **68.8773, 77.1464, 84.6632**, and the grayscale version is **64.8303, 68.2065, 74.2769**.

A 20% lighter version of the original color is **95.0500, 100.0000, 108.9000**, and **35.6085, 34.5639, 36.6930** is the 20% darker color. If you saturate the color by 10%, you get **60.3297, 55.3408, 58.0591**, and if you desaturate by 10%, it is **76.3855, 79.8473, 86.8570**.

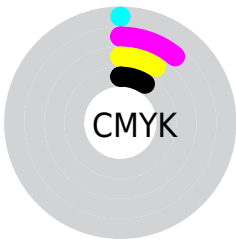
# Distribution



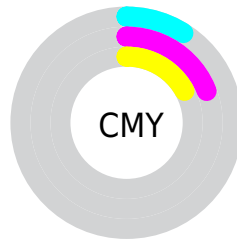
- Red (91%)
- Green (81%)
- Blue (83%)



- Red (91%)
- Yellow (81%)
- Blue (83%)



- Cyan (0%)
- Magenta (11%)
- Yellow (9%)
- Black (9%)



- Cyan (9%)
- Magenta (19%)
- Yellow (17%)

# Brightness & Saturation Gradients

These gradients show how the XYZ color 67.8008, 66.7028, 71.5888 changes by changing the brightness by 10 percent. The first figure shows a shift by +10% for each color and the second figure -10%.

Similar to the brightness gradients but the following saturation gradients show a change of the XYZ color 67.8008, 66.7028, 71.5888 by changing the saturation by 10% instead.



67.8008, 66.7028,  
71.5888

67.8008, 66.7028,  
71.5888

442.1777,  
448.8862, 485.0481

50.0088, 48.8431,  
52.3381

115.1106,  
114.4945, 123.1740

35.6382, 34.4951,  
36.8905

145.3591,  
145.1952, 156.3456

24.3237, 23.2742,  
24.8276

180.4905,  
180.9452, 194.9945

15.7000, 14.7961,  
15.7308

220.8700,  
222.1287, 239.5392

9.4016, 8.6764,  
9.1816

266.8632,  
269.1301, 290.3985

5.0632, 4.5307,  
4.7614

318.8353,

2.3196, 1.9746,

322.3339, 347.9907

2.0517

377.1517,  
382.1245, 412.7344

■ 0.8046, 0.5927,  
0.5868

■ 0.0000, 0.0000,  
0.0000

■ 67.8008, 66.7028,  
71.5888

■ 67.8008, 66.7028,  
71.5888

■ 60.3297, 55.3408,  
58.0591

■ 76.3855, 79.8473,  
86.8570

■ 53.9207, 45.6762,  
46.2015

■ 86.1213, 94.8375,  
103.9181

■ 48.5267, 37.6297,  
35.9519

■ 87.4146, 96.0638,  
108.5427

■ 44.0947, 31.1124,  
27.2401

■ 40.5670, 26.0270,  
19.9909

■ 37.8794, 22.2647,  
14.1224

■ 35.9588, 19.7009,  
9.5445

■ 34.7194, 18.1872,  
6.1554

■ 34.0740, 17.5116,  
4.0445

# Harmonies

## Analogous

The Analogous color harmony consists of three colors that are next to each other on the color wheel.



67.3893, 66.7028, 78.0143



67.8008, 66.7028, 71.5888



67.0103, 66.7028, 65.7877

# Triad

The Triadic color harmony groups three colors that are evenly spaced from another and form a triangle on the color wheel.



67.8008, 66.7028, 71.5888



60.9633, 66.7028, 62.9417



61.5806, 66.7028, 84.4094

# Complementary

The Complementary color scheme is a pair of colors which are on the opposite of each other on the color wheel.



67.8008, 66.7028, 71.5888



68.8773, 77.1464, 84.6632

# Split Complementary

Split-complementary colors differ from the complementary color scheme. The scheme consists of three colors, the original color and two neighbors of the complement color.



59.9199, 66.7028, 79.9267



67.8008, 66.7028, 71.5888



59.5694, 66.7028, 67.4955

# Square

The Square scheme is like the rectangle color scheme, but the four colors are evenly spaced on the color wheel.



67.8008, 66.7028, 71.5888



63.0351, 66.7028, 60.9867



59.1920, 66.7028, 73.6772



63.7643, 66.7028, 85.6638



# Rectangle

The Rectangle color scheme consists of four colors that form a rectangle on the color wheel.



67.8008, 66.7028, 71.5888



65.9187, 66.7028, 62.9771



59.1920, 66.7028, 73.6772



60.9443, 66.7028, 83.2177

# Sweetspot

The Sweet Spot groups the original color and five complimentary colors.



67.8027, 66.7057, 71.5902



91.6787, 94.8241, 102.9465



68.9545, 66.9733, 86.3845



19.4348, 20.0076, 21.7014



0.0000, 0.0000, 0.0000



20.3446, 21.4041, 23.3091



# Same Dimension

The Same Dimension uses a secret algorithm to generate beautiful new colors.



67.8027, 66.7057, 71.5902



81.3557, 79.0366, 84.5273



69.1184, 70.3304, 68.9673



15.1838, 15.1014, 16.2530



19.3681, 9.9499, 2.4739



1.5537, 0.7944, 0.3670



# Inverse Universe

The Inverse Universe completely reimagines the original color for something new.



67.8027, 66.7057, 71.5902



81.3557, 79.0366, 84.5273



67.4218, 73.1094, 87.6497



15.1838, 15.1014, 16.2530



19.3681, 9.9499, 2.4739



1.5537, 0.7944, 0.3670



# Previews

## White Background



This preview shows how the XYZ color 67.8008, 66.7028, 71.5888 looks on a white background.

## Color Contrast Check

Large Text (above 18pt) WCAG AA × Fail

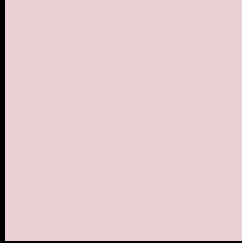
Any Text WCAG AA × Fail

Large Text (above 18pt) WCAG AAA × Fail

Any Text WCAG AAA × Fail



# Black Background



This preview shows how the XYZ color 67.8008, 66.7028, 71.5888 looks on a black background.

## Color Contrast Check

Large Text (above 18pt) WCAG AA ✓ Pass

Any Text WCAG AA ✓ Pass

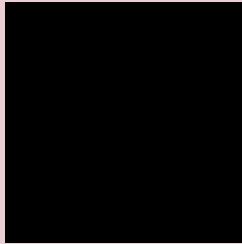
Large Text (above 18pt) WCAG AAA ✓ Pass

Any Text WCAG AAA ✓ Pass

If you want to check with other color combinations, try the [Color Contrast Checker](#).

**XYZ 67.8008, 66.7028, 71.5888**

## **Background**



This preview shows how black text looks on a background with the XYZ color 67.8008, 66.7028, 71.5888.



This preview shows how white text looks on a background with the XYZ color 67.8008, 66.7028,

71.5888.

# Color Blindness Simulation

Color vision deficiency is a very complex topic, and I could not describe the different causes any better than Wikipedia does, so if you want to learn more, you should check out their [article about color blindness](#).

## Dichromacy



### Original Color

67.8008, 66.7028, 71.5888

### Protanopia

64.4245, 66.7450, 73.7775

### Deuteranopia

68.1282, 66.8715, 71.6041



## Tritanopia

68.9478, 66.4290, 78.2954

# Trichromacy



## Original Color

67.8008, 66.7028, 71.5888

## Protanomaly

65.6156, 66.6362, 73.0221

## Deuteranomaly

68.1282, 66.8715, 71.6041

## Tritanomaly

68.6579, 66.6970, 75.5848

# Monochromacy



## Original Color

67.8008, 66.7028, 71.5888

## Achromatopsia

64.5905, 67.9542, 74.0022

## Achromatomaly

65.8053, 67.4716, 73.1733

# CSS Examples

## Text

The CSS property to change the color of the text to XYZ 67.8008, 66.7028, 71.5888 is called "color". The color property can be set on classes, ids or directly on the HTML element.

This example shows how text in the color `rgb(233, 207, 212)` looks like.

```
.text, #text, p{  
    color:rgb(233, 207, 212)  
}
```

If you want to add a text shadow in that color use the text-shadow property, you can generate a text shadow directly with our [CSS Text Shadow Generator](#).

Here you see how black text with a 4 pixel rgb(233, 207, 212) colored shadow looks like.

```
.shadow{ text-shadow: 4px 4px 2px rgb(233, 207, 212) }
```

## Border

The CSS property to change the border of an element to XYZ 67.8008, 66.7028, 71.5888 is called "border". The border property can be set on classes, ids or directly on the HTML element.

This example shows the color as border, it can be applied via the CSS property "border" or "border-color".

```
.border, #border, table{ border:4px solid rgb(233, 207, 212) }
```



If only the border color should be changed use the property `border-color`.

```
.border{ border-color:rgb(233, 207, 212) }
```

If you want to add a box shadow in that color use:

Here you see how a box with a 4 pixel `rgb(233, 207, 212)` colored shadow looks like.

```
.boxshadow{ -moz-box-shadow:4px 4px 4px  
4px rgb(233, 207, 212); -webkit-box-  
shadow:4px 4px 4px 4px rgb(233, 207, 212);  
box-shadow:4px 4px 4px 4px rgb(233, 207,  
212) }
```

# Background

The CSS property to change the background color of an element to XYZ 67.8008, 66.7028, 71.5888 is called "background". The background property can be set on classes, ids or directly on the HTML element.

```
.background, #background, body{  
background: rgb(233, 207, 212) }
```

If only the background color should be changed can be used:

```
.background{ background-color: rgb(233,  
207, 212) }
```

This example shows the color as background, it is applied via the CSS property "background".

To optimize and compress your CSS code, you can use our [online CSS compressor and optimizer](#) based on csstidy. If you want to create a linear or radial gradient as background or border, check our [CSS Gradient Generator](#).

Hey! You found this booklet interesting? Support Converting Colors with the new Membership Option!

The pro membership hides all ads, plus gives you double the colors in the color bucket, and more awesome pro features!

**[Learn more, Memberships starting at \\$2.50/m!](#)**

**Follow me  
on Twitter!**

@ConvertingColor