

Converting Colors

XYZ(67.7266, 67.9871, 66.9661)

Have a look what the booklet for
XYZ(67.7266, 67.9871, 66.9661)
contains.

XYZ(67.5499, 67.7765, 66.6486)	3
<i>Conversions</i>	4
<i>Details</i>	6
<i>Harmonies</i>	12
<i>Previews</i>	24
<i>Color Blindness Simulation</i>	28
<i>CSS Examples</i>	31

Color

**XYZ(67.5499, 67.7765,
66.6486)**

Conversions

Conversions Part 1

Format	Color
Hex	E9D2CC
RGB	233, 210, 204
RGB Percent	91%, 82%, 80%
CMY	0.0863, 0.1764, 0.2000
CMYK	0.00, 0.10, 0.12, 0.09
HSL	12°, 40%, 86%
HSV	12°, 12%, 91%
XYZ	67.5499, 67.7765, 66.6486
YIQ	216.1930, 15.6340, 3.0100

Conversions

Conversions Part 2

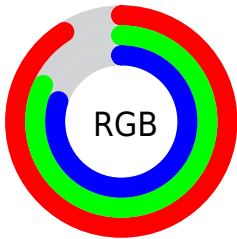
Format	Color
R _Y B	233, 212, 204
Decimal	15323852
CIE Lab	85.89, 7.00, 5.87
CIE LCh	86, 9.134, 39.957
Yxy	67.7765, 0.3344, 0.3356
Android (android.graphics.Color)	4293513932 (0xFFE9D2CC)
YUV	216.1930, -6.0111, 14.7397
Hunter-Lab	82.3265, 2.3901, 9.6295

Details

The XYZ color **67.5499, 67.7765, 66.6486** is a light color, and the websafe version is hex **CCCCCC**. A complement of this color would be **67.0784, 73.6569, 87.7731**, and the grayscale version is **65.4356, 68.8433, 74.9704**.

A 20% lighter version of the original color is **95.0500, 100.0000, 108.9000**, and **35.5249, 35.3261, 33.8004** is the 20% darker color. If you saturate the color by 10%, you get **60.6610, 58.1409, 51.5807**, and if you desaturate by 10%, it is **75.3873, 78.6386, 84.0968**.

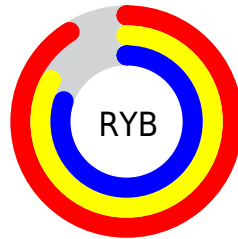
Distribution



Red (91%)

Green (82%)

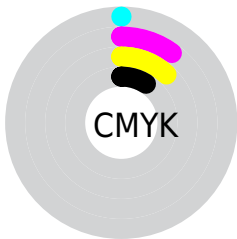
Blue (80%)



Red (91%)

Yellow (83%)

Blue (80%)

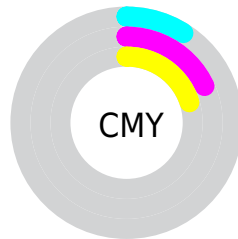


Cyan (0%)

Magenta (10%)

Yellow (12%)

Black (9%)



Cyan (9%)

Magenta (18%)

Yellow (20%)

Brightness & Saturation Gradients

These gradients show how the XYZ color 67.5499, 67.7765, 66.6486 changes by changing the brightness by 10 percent. The first figure shows a shift by +10% for each color and the second figure -10%.

Similar to the brightness gradients but the following saturation gradients show a change of the XYZ color 67.5499, 67.7765, 66.6486 by changing the saturation by 10% instead.

67.5499, 67.7765,
66.6486

67.5499, 67.7765,
66.6486

441.3014,
452.7037, 467.1603

49.8040, 49.7159,
48.3393

114.7535,
116.0324, 116.0526

35.4748, 35.1877,
33.7338

144.9418,
146.9964, 147.9844

24.1971, 23.8075,
22.4134

180.0084,
183.0305, 185.2941

15.6054, 15.1909,
13.9598

220.3185,
224.5188, 228.4003

9.3344, 8.9535,
7.9543

266.2375,
271.8460, 277.7214

5.0188, 4.7108,
3.9783

318.1307,

2.2932, 2.0786,

325.3962, 333.6761

1.6135

376.3636,
385.5540, 396.6829

■ 0.7912, 0.6526,
0.3004

■ 0.0000, 0.0000,
0.0000

■ 67.5499, 67.7765,
66.6486

■ 67.5499, 67.7765,
66.6486

■ 60.6610, 58.1409,
51.5807

■ 75.3873, 78.6386,
84.0968

■ 54.6786, 49.6798,
38.7855

■ 84.2020, 90.7591,
104.0182

■ 49.5660, 42.3505,
28.1533

■ 87.4145, 96.0637,
108.5427

■ 45.2815, 36.1044,
19.5638

■ 41.7800, 30.8893,
12.8847

■ 39.0118, 26.6486,
7.9681

■ 36.9214, 23.3199,
4.6440

■ 35.4440, 20.8332,
2.7084

■ 34.6714, 19.4576,
1.9283

Harmonies

Analogous

The Analogous color harmony consists of three colors that are next to each other on the color wheel.



68.4600, 67.7765, 71.8246



67.5499, 67.7765, 66.6486



65.8069, 67.7765, 63.5027

Triad

The Triadic color harmony groups three colors that are evenly spaced from another and form a triangle on the color wheel.



67.5499, 67.7765, 66.6486



60.7169, 67.7765, 69.9217



65.1170, 67.7765, 85.7255

Complementary

The Complementary color scheme is a pair of colors which are on the opposite of each other on the color wheel.



67.5499, 67.7765, 66.6486



67.0784, 73.6569, 87.7731

Split Complementary

Split-complementary colors differ from the complementary color scheme. The scheme consists of three colors, the original color and two neighbors of the complement color.



63.0517, 67.7765, 85.1479



67.5499, 67.7765, 66.6486



60.5412, 67.7765, 75.8053

Square

The Square scheme is like the rectangle color scheme, but the four colors are evenly spaced on the color wheel.



67.5499, 67.7765, 66.6486



61.8726, 67.7765, 65.3204



61.3874, 67.7765, 81.4393



67.0354, 67.7765, 82.9772

Rectangle

The Rectangle color scheme consists of four colors that form a rectangle on the color wheel.



67.5499, 67.7765, 66.6486



64.4226, 67.7765, 62.8740



61.3874, 67.7765, 81.4393



64.4165, 67.7765, 85.9172

Sweetspot

The Sweet Spot groups the original color and five complimentary colors.



67.5518, 67.7795, 66.6500



90.9247, 94.3080, 99.6372



69.0906, 66.0673, 81.9292



19.3002, 19.9627, 20.9653



0.0000, 0.0000, 0.0000



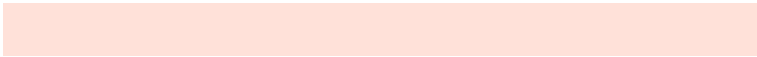
20.3446, 21.4041, 23.3091

Same Dimension

The Same Dimension uses a secret algorithm to generate beautiful new colors.



67.5518, 67.7795, 66.6500



80.5679, 79.9288, 76.6567



71.2403, 75.1566, 67.8796



15.3181, 15.5593, 15.7146



19.7446, 11.1834, 1.1180



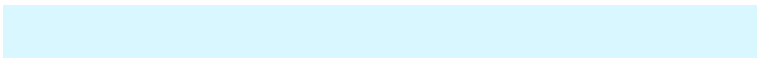
1.6180, 1.0132, 0.1103

Inverse Universe

The Inverse Universe completely reimagines the original color for something new.



67.0784, 73.6569, 87.7731



79.8763, 88.5040, 107.4808



63.3295, 66.1591, 86.5235



15.2375, 16.5614, 19.3158



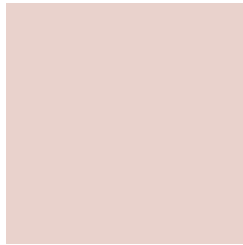
18.2528, 23.1527, 47.2499



1.4998, 1.9510, 3.7324

Previews

White Background



This preview shows how the XYZ color 67.5499, 67.7765, 66.6486 looks on a white background.

Color Contrast Check

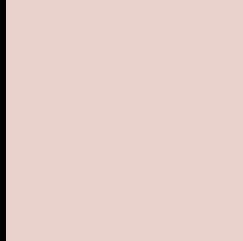
Large Text (above 18pt) WCAG AA × Fail

Any Text WCAG AA × Fail

Large Text (above 18pt) WCAG AAA × Fail

Any Text WCAG AAA × Fail

Black Background



This preview shows how the XYZ color 67.5499, 67.7765, 66.6486 looks on a black background.

Color Contrast Check

Large Text (above 18pt) WCAG AA ✓ Pass

Any Text WCAG AA ✓ Pass

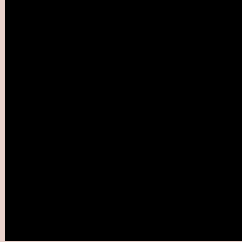
Large Text (above 18pt) WCAG AAA ✓ Pass

Any Text WCAG AAA ✓ Pass

If you want to check with other color combinations, try the [Color Contrast Checker](#).

XYZ 67.5499, 67.7765, 66.6486

Background



This preview shows how black text looks on a background with the XYZ color 67.5499, 67.7765, 66.6486.

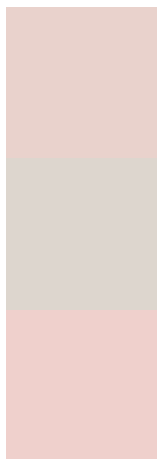


This preview shows how white text looks on a background with the XYZ color 67.5499, 67.7765,

Color Blindness Simulation

Color vision deficiency is a very complex topic, and I could not describe the different causes any better than Wikipedia does, so if you want to learn more, you should check out their [article about color blindness](#).

Dichromacy



Original Color

67.5499, 67.7765, 66.6486

Protanopia

65.0059, 67.9215, 68.0765

Deuteranopia

69.0516, 67.8221, 66.5783



Tritanopia

70.2242, 67.7862, 79.1949

Trichromacy



Original Color

67.5499, 67.7765, 66.6486

Protanomaly

65.8650, 68.0038, 67.4122

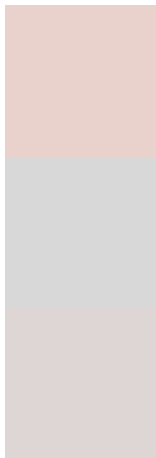
Deuteranomaly

68.6246, 67.9651, 66.6284

Tritanomaly

69.2115, 67.7318, 74.3914

Monochromacy



Original Color

67.5499, 67.7765, 66.6486

Achromatopsia

65.2694, 68.6685, 74.7800

Achromatomaly

66.0544, 68.3762, 72.0038

CSS Examples

Text

The CSS property to change the color of the text to XYZ 67.5499, 67.7765, 66.6486 is called "color". The color property can be set on classes, ids or directly on the HTML element.

This example shows how text in the color rgb(233, 210, 204) looks like.

```
.text, #text, p{  
    color:rgb(233, 210, 204)  
}
```

If you want to add a text shadow in that color use the text-shadow property, you can generate a text shadow directly with our [CSS Text Shadow Generator](#).

Here you see how black text with a 4 pixel rgb(233, 210, 204) colored shadow looks like.

```
.shadow{ text-shadow: 4px 4px 2px rgb(233, 210, 204) }
```

Border

The CSS property to change the border of an element to XYZ 67.5499, 67.7765, 66.6486 is called "border". The border property can be set on classes, ids or directly on the HTML element.

This example shows the color as border, it can be applied via the CSS property "border" or "border-color".

```
.border, #border, table{ border:4px solid rgb(233, 210, 204) }
```


If only the border color should be changed use the property `border-color`.

```
.border{ border-color:rgb(233, 210, 204) }
```

If you want to add a box shadow in that color use:

Here you see how a box with a 4 pixel `rgb(233, 210, 204)` colored shadow looks like.

```
.boxshadow{ -moz-box-shadow:4px 4px 4px  
4px rgb(233, 210, 204); -webkit-box-  
shadow:4px 4px 4px 4px rgb(233, 210, 204);  
box-shadow:4px 4px 4px 4px rgb(233, 210,  
204) }
```

Background

The CSS property to change the background color of an element to XYZ 67.5499, 67.7765, 66.6486 is called "background". The background property can be set on classes, ids or directly on the HTML element.

```
.background, #background, body{  
background: rgb(233, 210, 204) }
```

If only the background color should be changed can be used:

```
.background{ background-color: rgb(233,  
210, 204) }
```

This example shows the color as background, it is applied via the CSS property "background".

To optimize and compress your CSS code, you can use our [online CSS compressor and optimizer](#) based on csstidy. If you want to create a linear or radial gradient as background or border, check our [CSS Gradient Generator](#).

Hey! You found this booklet interesting? Support Converting Colors with the new Membership Option!

The pro membership hides all ads, plus gives you double the colors in the color bucket, and more awesome pro features!

[Learn more, Memberships starting at \\$2.50/m!](#)

**Follow me
on Twitter!**

@ConvertingColor