

# Converting Colors

XYZ(67.7578, 67.8974, 66.0342)

Have a look what the booklet for  
XYZ(67.7578, 67.8974, 66.0342)  
contains.

<b>XYZ(67.7578, 67.8974, 66.0342)</b> .....	3
<b><i>Conversions</i></b> .....	4
<b><i>Details</i></b> .....	6
<b><i>Harmonies</i></b> .....	12
<b><i>Previews</i></b> .....	24
<b><i>Color Blindness Simulation</i></b> .....	28
<b><i>CSS Examples</i></b> .....	31

# Color

**XYZ(67.7578, 67.8974,  
66.0342)**

# Conversions

## Conversions Part 1

Format	Color
Hex	EAD2CB
RGB	234, 210, 203
RGB Percent	92%, 82%, 80%
CMY	0.0823, 0.1764, 0.2039
CMYK	0.00, 0.10, 0.13, 0.08
HSL	14°, 42%, 86%
HSV	14°, 13%, 92%
XYZ	67.7578, 67.8974, 66.0342
YIQ	216.3780, 16.5510, 2.9110

# Conversions

## Conversions Part 2

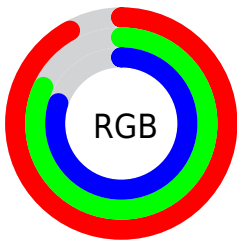
Format	Color
<b>RYB</b>	234, 212, 203
Decimal	15389387
CIELab	85.96, 7.20, 6.49
CIELCh	86, 9.695, 42.056
Yxy	67.8974, 0.3360, 0.3366
Android (android.graphics.Color)	4293579467 (0xFFEAD2CB)
YUV	216.3780, -6.5954, 15.4545
Hunter-Lab	82.3999, 2.5816, 10.1657

# Details

The XYZ color **67.7578, 67.8974, 66.0342** is a light color, and the websafe version is hex **CCCCCC**. A complement of this color would be **66.9487, 73.5738, 88.5153**, and the grayscale version is **65.5652, 68.9797, 75.1189**.

A 20% lighter version of the original color is **95.0500, 100.0000, 108.9000**, and **35.6734, 35.4118, 33.3887** is the 20% darker color. If you saturate the color by 10%, you get **60.9557, 58.4238, 51.0316**, and if you desaturate by 10%, it is **75.4907, 78.5578, 83.4252**.

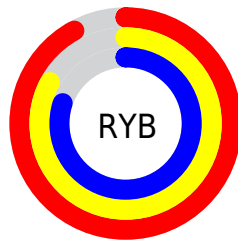
# Distribution



Red (92%)

Green (82%)

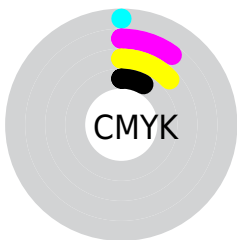
Blue (80%)



Red (92%)

Yellow (83%)

Blue (80%)

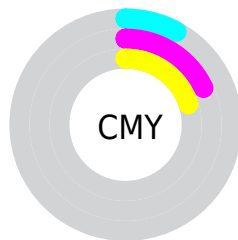


Cyan (0%)

Magenta (10%)

Yellow (13%)

Black (8%)



Cyan (8%)

Magenta (18%)

Yellow (20%)

# Brightness & Saturation Gradients

These gradients show how the XYZ color 67.7578, 67.8974, 66.0342 changes by changing the brightness by 10 percent. The first figure shows a shift by +10% for each color and the second figure -10%.

Similar to the brightness gradients but the following saturation gradients show a change of the XYZ color 67.7578, 67.8974, 66.0342 by changing the saturation by 10% instead.



67.7578, 67.8974,  
66.0342

67.7578, 67.8974,  
66.0342

442.0276,  
453.1324, 464.9067

49.9737, 49.8143,  
47.8435

115.0494,  
116.2054, 115.1629

35.6102, 35.2658,  
33.3439

145.2876,  
147.1990, 146.9380

24.3020, 23.8677,  
22.1167

180.4079,  
183.2649, 184.0783

15.6837, 15.2355,  
13.7436

220.7755,  
224.7874, 227.0023

9.3901, 8.9849,  
7.8058

266.7560,  
272.1511, 276.1286

5.0556, 4.7313,  
3.8850

318.7146,

2.3150, 2.0905,

325.7402, 331.8758

1.5624

377.0167,  
385.9392, 394.6623

■ 0.8023, 0.6593,  
0.2638

■ 0.0000, 0.0000,  
0.0000

■ 67.7578, 67.8974,  
66.0342

■ 67.7578, 67.8974,  
66.0342

■ 60.9557, 58.4238,  
51.0316

■ 75.4907, 78.5578,  
83.4252

■ 55.0433, 50.0867,  
38.3085

■ 84.1825, 90.4349,  
103.2983

■ 49.9845, 42.8457,  
27.7539

■ 87.7420, 96.2326,  
108.5580

■ 45.7385, 36.6544,  
19.2458

■ 42.2611, 31.4632,  
12.6499

■ 39.5036, 27.2181,  
7.8159

■ 37.4112, 23.8598,  
4.5706

■ 35.9202, 21.3216,  
2.7047

■ 35.1992, 20.0270,  
2.0104

# Harmonies

## Analogous

The Analogous color harmony consists of three colors that are next to each other on the color wheel.



68.8019, 67.8974, 71.4032



67.7578, 67.8974, 66.0342



65.8592, 67.8974, 62.8919

# Triad

The Triadic color harmony groups three colors that are evenly spaced from another and form a triangle on the color wheel.



67.7578, 67.8974, 66.0342



60.5559, 67.8974, 70.2240



65.4306, 67.8974, 86.5474

# Complementary

The Complementary color scheme is a pair of colors which are on the opposite of each other on the color wheel.



67.7578, 67.8974, 66.0342



66.9487, 73.5738, 88.5153

# Split Complementary

Split-complementary colors differ from the complementary color scheme. The scheme consists of three colors, the original color and two neighbors of the complement color.



63.2275, 67.8974, 86.1867



67.7578, 67.8974, 66.0342



60.4472, 67.8974, 76.5131

# Square

The Square scheme is like the rectangle color scheme, but the four colors are evenly spaced on the color wheel.



67.7578, 67.8974, 66.0342



61.7156, 67.8974, 65.2137



61.4150, 67.8974, 82.4286



67.4379, 67.8974, 83.3876



# Rectangle

The Rectangle color scheme consists of four colors that form a rectangle on the color wheel.



67.7578, 67.8974, 66.0342



64.3813, 67.8974, 62.3663



61.4150, 67.8974, 82.4286



64.6878, 67.8974, 86.8386

# Sweetspot

The Sweet Spot groups the original color and five complimentary colors.



67.7597, 67.9004, 66.0356



90.9837, 94.4259, 99.6569



69.1928, 65.7670, 81.9265



19.3151, 19.9924, 20.9703



0.0000, 0.0000, 0.0000



20.3446, 21.4041, 23.3091

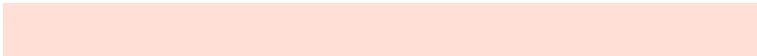


# Same Dimension

The Same Dimension uses a secret algorithm to generate beautiful new colors.



67.7597, 67.9004, 66.0356



79.9028, 79.1245, 74.8136



71.6958, 75.7728, 67.3477



15.3415, 15.6061, 15.7224



19.8575, 11.4092, 1.1556



1.6300, 1.0372, 0.1143

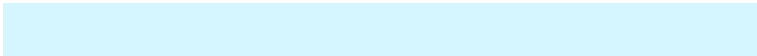


# Inverse Universe

The Inverse Universe completely reimagines the original color for something new.



66.9487, 73.5738, 88.5153



78.7293, 87.3250, 107.3137



62.9701, 65.6167, 87.1891



15.2123, 16.5110, 19.3074



17.7447, 22.1363, 47.0805

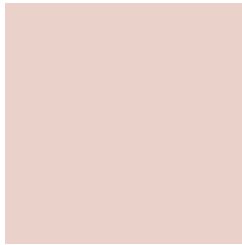


1.4640, 1.8794, 3.7205



# Previews

## White Background



This preview shows how the XYZ color 67.7578, 67.8974, 66.0342 looks on a white background.

## Color Contrast Check

Large Text (above 18pt) WCAG AA × Fail

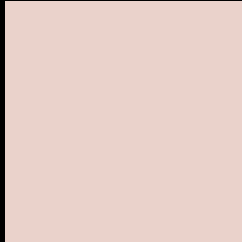
Any Text WCAG AA × Fail

Large Text (above 18pt) WCAG AAA × Fail

Any Text WCAG AAA × Fail



# Black Background



This preview shows how the XYZ color 67.7578, 67.8974, 66.0342 looks on a black background.

## Color Contrast Check

Large Text (above 18pt) WCAG AA ✓ Pass

Any Text WCAG AA ✓ Pass

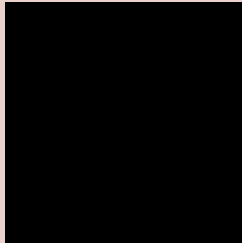
Large Text (above 18pt) WCAG AAA ✓ Pass

Any Text WCAG AAA ✓ Pass

If you want to check with other color combinations, try the [Color Contrast Checker](#).

**XYZ 67.7578, 67.8974, 66.0342**

## **Background**



This preview shows how black text looks on a background with the XYZ color 67.7578, 67.8974, 66.0342.



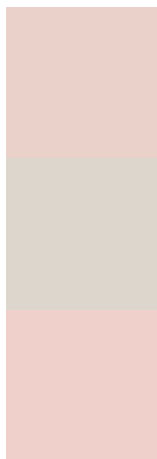
This preview shows how white text looks on a background with the XYZ color 67.7578, 67.8974,



# Color Blindness Simulation

Color vision deficiency is a very complex topic, and I could not describe the different causes any better than Wikipedia does, so if you want to learn more, you should check out their [article about color blindness](#).

## Dichromacy



### Original Color

67.7578, 67.8974, 66.0342

### Protanopia

64.8848, 67.8731, 67.4386

### Deuteranopia

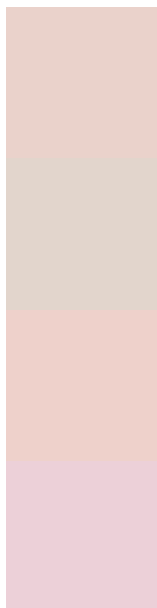
69.2705, 67.9488, 65.9644



## Tritanopia

70.5572, 67.9579, 79.2105

# Trichromacy



## Original Color

67.7578, 67.8974, 66.0342

## Protanomaly

66.0574, 68.1169, 66.7930

## Deuteranomaly

68.8399, 68.0899, 66.0143

## Tritanomaly

69.5426, 67.9025, 74.4069

# Monochromacy



## Original Color

67.7578, 67.8974, 66.0342

## Achromatopsia

65.2694, 68.6685, 74.7800

## Achromatomaly

66.2359, 68.4843, 71.3558

# CSS Examples

## Text

The CSS property to change the color of the text to XYZ 67.7578, 67.8974, 66.0342 is called "color". The color property can be set on classes, ids or directly on the HTML element.

This example shows how text in the color rgb(234, 210, 203) looks like.

```
.text, #text, p{  
    color:rgb(234, 210, 203)  
}
```

If you want to add a text shadow in that color use the text-shadow property, you can generate a text shadow directly with our [CSS Text Shadow Generator](#).

Here you see how black text with a 4 pixel rgb(234, 210, 203) colored shadow looks like.

```
.shadow{ text-shadow: 4px 4px 2px rgb(234, 210, 203) }
```

## Border

The CSS property to change the border of an element to XYZ 67.7578, 67.8974, 66.0342 is called "border". The border property can be set on classes, ids or directly on the HTML element.

This example shows the color as border, it can be applied via the CSS property "border" or "border-color".

```
.border, #border, table{ border:4px solid rgb(234, 210, 203) }
```



If only the border color should be changed use the property `border-color`.

```
.border{ border-color:rgb(234, 210, 203) }
```

If you want to add a box shadow in that color use:

Here you see how a box with a 4 pixel `rgb(234, 210, 203)` colored shadow looks like.

```
.boxshadow{ -moz-box-shadow:4px 4px 4px  
4px rgb(234, 210, 203); -webkit-box-  
shadow:4px 4px 4px 4px rgb(234, 210, 203);  
box-shadow:4px 4px 4px 4px rgb(234, 210,  
203) }
```

# Background

The CSS property to change the background color of an element to XYZ 67.7578, 67.8974, 66.0342 is called "background". The background property can be set on classes, ids or directly on the HTML element.

```
.background, #background, body{  
background: rgb(234, 210, 203) }
```

If only the background color should be changed can be used:

```
.background{ background-color: rgb(234,  
210, 203) }
```

This example shows the color as background, it is applied via the CSS property "background".

To optimize and compress your CSS code, you can use our [online CSS compressor and optimizer](#) based on csstidy. If you want to create a linear or radial gradient as background or border, check our [CSS Gradient Generator](#).

Hey! You found this booklet interesting? Support Converting Colors with the new Membership Option!

The pro membership hides all ads, plus gives you double the colors in the color bucket, and more awesome pro features!

**[Learn more, Memberships starting at \\$2.50/m!](#)**

**Follow me  
on Twitter!**

@ConvertingColor