

# Converting Colors

XYZ(67.8323, 65.8720, 61.3640)

Have a look what the booklet for  
XYZ(67.8323, 65.8720, 61.3640)  
contains.

<b>XYZ(67.8323, 65.8720, 61.3640)</b> .....	3
<b><i>Conversions</i></b> .....	4
<b><i>Details</i></b> .....	6
<b><i>Harmonies</i></b> .....	12
<b><i>Previews</i></b> .....	24
<b><i>Color Blindness Simulation</i></b> .....	28
<b><i>CSS Examples</i></b> .....	31

# Color

**XYZ(67.8323, 65.8720,  
61.3640)**

# Conversions

## Conversions Part 1

Format	Color
Hex	F1CCC4
RGB	241, 204, 196
RGB Percent	95%, 80%, 77%
CMY	0.0549, 0.2000, 0.2314
CMYK	0.00, 0.15, 0.19, 0.05
HSL	11°, 62%, 86%
HSV	11°, 19%, 95%
XYZ	67.8323, 65.8720, 61.3640
YIQ	214.1510, 24.6200, 5.3560

# Conversions

## Conversions Part 2

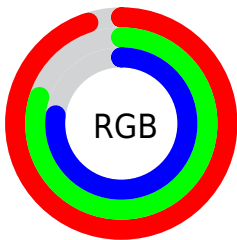
Format	Color
R <sub>Y</sub> B	241, 206, 196
Decimal	15846596
CIE Lab	84.93, 11.78, 8.82
CIE LCh	85, 14.711, 36.825
Yxy	65.8720, 0.3477, 0.3377
Android (android.graphics.Color)	4294036676 (0xFFFF1CCC4)
YUV	214.1510, -8.9484, 23.5466
Hunter-Lab	81.1616, 7.1520, 11.9856

# Details

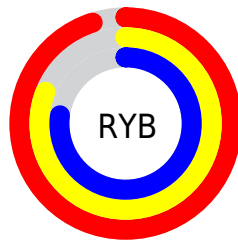
The XYZ color **67.8323, 65.8720, 61.3640** is a light color, and the websafe version is hex **FFCCCC**. A complement of this color would be **67.7806, 76.3627, 94.3867**, and the grayscale version is **64.0664, 67.4028, 73.4017**.

A 20% lighter version of the original color is **94.7296, 99.8718, 107.2129**, and **35.5560, 33.9560, 30.2714** is the 20% darker color. If you saturate the color by 10%, you get **60.8933, 56.0367, 46.5869**, and if you desaturate by 10%, it is **75.8147, 77.0877, 78.6643**.

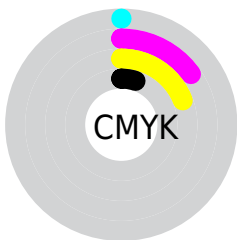
# Distribution



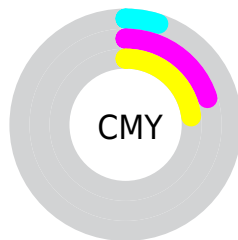
- Red (95%)
- Green (80%)
- Blue (77%)



- Red (95%)
- Yellow (81%)
- Blue (77%)



- Cyan (0%)
- Magenta (15%)
- Yellow (19%)
- Black (5%)



- Cyan (5%)
- Magenta (20%)
- Yellow (23%)

# Brightness & Saturation Gradients

These gradients show how the XYZ color 67.8323, 65.8720, 61.3640 changes by changing the brightness by 10 percent. The first figure shows a shift by +10% for each color and the second figure -10%.

Similar to the brightness gradients but the following saturation gradients show a change of the XYZ color 67.8323, 65.8720, 61.3640 by changing the saturation by 10% instead.



67.8323, 65.8720,  
61.3640

67.8323, 65.8720,  
61.3640

442.2877,  
445.9190, 447.5508

50.0345, 48.1685,  
44.0865

115.1554,  
113.3026, 108.3685

35.6587, 33.9603,  
30.4008

145.4115,  
143.7985, 138.9325

24.3396, 22.8631,  
19.8884

180.5510,  
179.3273, 174.7626

15.7118, 14.4925,  
12.1307

220.9393,  
220.2734, 216.2771

9.4100, 8.4640,  
6.7091

266.9417,  
267.0213, 263.8946

5.0688, 4.3932,  
3.2052

318.9237,

2.3229, 1.8959,

319.9552, 318.0337

1.2003

377.2506,  
379.4596, 379.1130

■ 0.8063, 0.5459,  
0.0000

■ 0.0000, 0.0000,  
0.0000

■ 67.8323, 65.8720,  
61.3640

■ 67.8323, 65.8720,  
61.3640

■ 60.8933, 56.0367,  
46.5869

■ 75.8147, 77.0877,  
78.6643

■ 54.9489, 47.5196,  
34.2107

■ 84.8758, 89.7251,  
98.5938

■ 49.9543, 40.2670,  
24.1093

■ 90.0859, 97.4409,  
108.6677

■ 45.8592, 34.2180,  
16.1433

■ 42.6085, 29.3066,  
10.1579

■ 40.1407, 25.4604,  
5.9772

■ 38.3855, 22.5981,  
3.3940

■ 37.2510, 20.6230,  
2.1092

■ 37.1350, 20.4191,  
1.9840

# Harmonies

## Analogous

The Analogous color harmony consists of three colors that are next to each other on the color wheel.



69.1298, 65.8720, 69.5834



67.8323, 65.8720, 61.3640



65.1423, 65.8720, 56.2672

# Triad

The Triadic color harmony groups three colors that are evenly spaced from another and form a triangle on the color wheel.



67.8323, 65.8720, 61.3640



56.9501, 65.8720, 64.8005



63.3672, 65.8720, 91.3428

# Complementary

The Complementary color scheme is a pair of colors which are on the opposite of each other on the color wheel.



67.8323, 65.8720, 61.3640



67.7806, 76.3627, 94.3867

# Split Complementary

Split-complementary colors differ from the complementary color scheme. The scheme consists of three colors, the original color and two neighbors of the complement color.



60.1429, 65.8720, 89.7787



67.8323, 65.8720, 61.3640



56.5124, 65.8720, 73.9068

# Square

The Square scheme is like the rectangle color scheme, but the four colors are evenly spaced on the color wheel.



67.8323, 65.8720, 61.3640



58.8792, 65.8720, 58.1260



57.6616, 65.8720, 83.1877



66.4939, 65.8720, 87.2914



# Rectangle

The Rectangle color scheme consists of four colors that form a rectangle on the color wheel.



67.8323, 65.8720, 61.3640



62.9618, 65.8720, 55.0513



57.6616, 65.8720, 83.1877



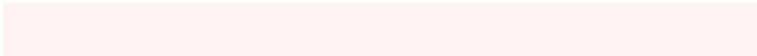
62.2582, 65.8720, 91.4615

# Sweetspot

The Sweet Spot groups the original color and five complimentary colors.



67.8341, 65.8750, 61.3654



88.8014, 91.2889, 95.1448



70.7958, 64.0933, 86.1064



18.8674, 19.3443, 20.0586



0.0000, 0.0000, 0.0000



20.3446, 21.4041, 23.3091



# Same Dimension

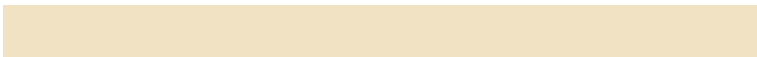
The Same Dimension uses a secret algorithm to generate beautiful new colors.



67.8341, 65.8750, 61.3654



74.3079, 70.9204, 63.7445



73.4365, 77.0797, 63.2328



16.0001, 16.2134, 16.4359



20.2059, 11.2098, 1.0987



1.7448, 1.0603, 0.1127



# Inverse Universe

The Inverse Universe completely reimagines the original color for something new.



67.7806, 76.3627, 94.3867



74.2355, 84.6661, 107.0373



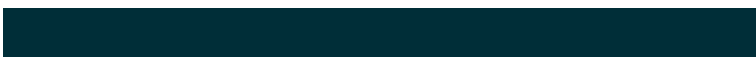
61.9372, 64.6760, 92.4389



15.9943, 17.4227, 20.2415



19.6671, 25.5585, 49.0246



1.6980, 2.2500, 4.0990



# Previews

## White Background



This preview shows how the XYZ color 67.8323, 65.8720, 61.3640 looks on a white background.

## Color Contrast Check

Large Text (above 18pt) WCAG AA × Fail

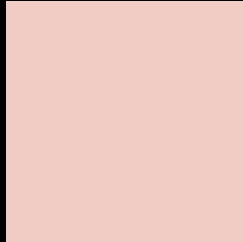
Any Text WCAG AA × Fail

Large Text (above 18pt) WCAG AAA × Fail

Any Text WCAG AAA × Fail



# Black Background



This preview shows how the XYZ color 67.8323, 65.8720, 61.3640 looks on a black background.

## Color Contrast Check

Large Text (above 18pt) WCAG AA ✓ Pass

Any Text WCAG AA ✓ Pass

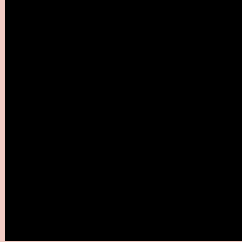
Large Text (above 18pt) WCAG AAA ✓ Pass

Any Text WCAG AAA ✓ Pass

If you want to check with other color combinations, try the [Color Contrast Checker](#).

# XYZ 67.8323, 65.8720, 61.3640

## Background



This preview shows how black text looks on a background with the XYZ color 67.8323, 65.8720, 61.3640.



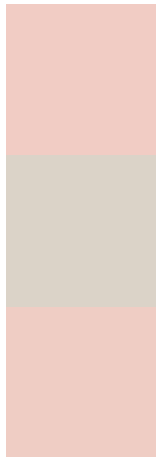
This preview shows how white text looks on a background with the XYZ color 67.8323, 65.8720,

61.3640.

# Color Blindness Simulation

Color vision deficiency is a very complex topic, and I could not describe the different causes any better than Wikipedia does, so if you want to learn more, you should check out their [article about color blindness](#).

## Dichromacy



### Original Color

67.8323, 65.8720, 61.3640

### Protanopia

62.9330, 65.8187, 64.0309

### Deuteranopia

67.3917, 65.9989, 61.4117



## Tritanopia

70.7193, 66.0161, 74.6607

# Trichromacy



## Original Color

67.8323, 65.8720, 61.3640

## Protanomaly

64.5432, 65.5662, 63.2866

## Deuteranomaly

67.7303, 66.1734, 61.4275

## Tritanomaly

69.5913, 65.8992, 69.3736

# Monochromacy



## Original Color

67.8323, 65.8720, 61.3640

## Achromatopsia

63.9157, 67.2443, 73.2291

## Achromatomaly

65.0495, 66.4455, 68.4283

# CSS Examples

## Text

The CSS property to change the color of the text to XYZ 67.8323, 65.8720, 61.3640 is called "color". The color property can be set on classes, ids or directly on the HTML element.

This example shows how text in the color rgb(241, 204, 196) looks like.

```
.text, #text, p{  
    color:rgb(241, 204, 196)  
}
```

If you want to add a text shadow in that color use the text-shadow property, you can generate a text shadow directly with our [CSS Text Shadow Generator](#).

Here you see how black text with a 4 pixel rgb(241, 204, 196) colored shadow looks like.

```
.shadow{ text-shadow: 4px 4px 2px rgb(241, 204, 196) }
```

## Border

The CSS property to change the border of an element to XYZ 67.8323, 65.8720, 61.3640 is called "border". The border property can be set on classes, ids or directly on the HTML element.

This example shows the color as border, it can be applied via the CSS property "border" or "border-color".

```
.border, #border, table{ border:4px solid rgb(241, 204, 196) }
```



If only the border color should be changed use the property `border-color`.

```
.border{ border-color:rgb(241, 204, 196) }
```

If you want to add a box shadow in that color use:

Here you see how a box with a 4 pixel `rgb(241, 204, 196)` colored shadow looks like.

```
.boxshadow{ -moz-box-shadow:4px 4px 4px 4px rgb(241, 204, 196); -webkit-box-shadow:4px 4px 4px 4px rgb(241, 204, 196); box-shadow:4px 4px 4px 4px rgb(241, 204, 196) }
```

# Background

The CSS property to change the background color of an element to XYZ 67.8323, 65.8720, 61.3640 is called "background". The background property can be set on classes, ids or directly on the HTML element.

```
.background, #background, body{  
background: rgb(241, 204, 196) }
```

If only the background color should be changed can be used:

```
.background{ background-color: rgb(241,  
204, 196) }
```

This example shows the color as background, it is applied via the CSS property "background".

To optimize and compress your CSS code, you can use our [online CSS compressor and optimizer](#) based on csstidy. If you want to create a linear or radial gradient as background or border, check our [CSS Gradient Generator](#).

Hey! You found this booklet interesting? Support Converting Colors with the new Membership Option!

The pro membership hides all ads, plus gives you double the colors in the color bucket, and more awesome pro features!

**[Learn more, Memberships starting at \\$2.50/m!](#)**

**Follow me  
on Twitter!**

@ConvertingColor