

Converting Colors

XYZ(67.9154, 66.5464, 74.6359)

Have a look what the booklet for
XYZ(67.9154, 66.5464, 74.6359)
contains.

XYZ(68.1159, 66.7912, 74.9475)	3
<i>Conversions</i>	4
<i>Details</i>	6
<i>Harmonies</i>	12
<i>Previews</i>	24
<i>Color Blindness Simulation</i>	28
<i>CSS Examples</i>	31

Color

**XYZ(68.1159, 66.7912,
74.9475)**

Conversions

Conversions Part 1

Format	Color
Hex	E8CFD9
RGB	232, 207, 217
RGB Percent	91%, 81%, 85%
CMY	0.0902, 0.1882, 0.1490
CMYK	0.00, 0.11, 0.06, 0.09
HSL	336°, 35%, 86%
HSV	336°, 11%, 91%
XYZ	68.1159, 66.7912, 74.9475
YIQ	215.6150, 11.6900, 8.4100

Conversions

Conversions Part 2

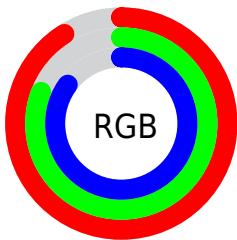
Format	Color
R _Y B	232, 207, 217
Decimal	15257561
CIE Lab	85.40, 10.38, -1.76
CIE LCh	85, 10.532, 350.360
Yxy	66.7912, 0.3246, 0.3183
Android (android.graphics.Color)	4293447641 (0xFFE8CFD9)
YUV	215.6150, 0.6828, 14.3696
Hunter-Lab	81.7259, 5.7537, 2.8357

Details

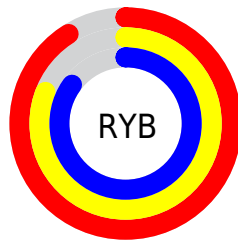
The XYZ color **68.1159, 66.7912, 74.9475** is a light color, and the websafe version is hex **CCCCCC**. A complement of this color would be **67.7761, 76.2543, 80.2573**, and the grayscale version is **64.9999, 68.3850, 74.4712**.

A 20% lighter version of the original color is **95.0500, 100.0000, 108.9000**, and **35.8173, 34.6212, 38.9772** is the 20% darker color. If you saturate the color by 10%, you get **61.1681, 55.6717, 64.0711**, and if you desaturate by 10%, it is **76.0462, 79.6293, 86.9067**.

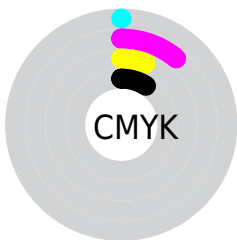
Distribution



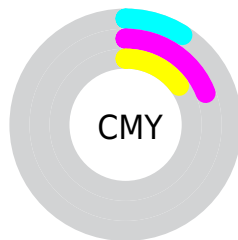
- Red (91%)
- Green (81%)
- Blue (85%)



- Red (91%)
- Yellow (81%)
- Blue (85%)



- Cyan (0%)
- Magenta (11%)
- Yellow (6%)
- Black (9%)



- Cyan (9%)
- Magenta (19%)
- Yellow (15%)

Brightness & Saturation Gradients

These gradients show how the XYZ color 68.1159, 66.7912, 74.9475 changes by changing the brightness by 10 percent. The first figure shows a shift by +10% for each color and the second figure -10%.

Similar to the brightness gradients but the following saturation gradients show a change of the XYZ color 68.1159, 66.7912, 74.9475 by changing the saturation by 10% instead.

68.1159, 66.7912,
74.9475

68.1159, 66.7912,
74.9475

443.2768,
449.2012, 496.9877

50.2661, 48.9150,
55.0684

115.5589,
114.6212, 127.9845

35.8435, 34.5520,
39.0575

145.8828,
145.3437, 161.9794

24.4829, 23.3180,
26.4963

181.0954,
181.1171, 201.5167

15.8189, 14.8285,
16.9662

221.5621,
222.3258, 247.0149

9.4861, 8.6991,
10.0487

267.6483,
269.3541, 298.8926

5.1192, 4.5454,
5.3252

319.7192,

2.3529, 1.9831,

322.5866, 357.5683

2.3773

378.1403,
382.4074, 423.4605

■ 0.8215, 0.5976,
0.7740

■ 0.0000, 0.0000,
0.0000

■ 68.1159, 66.7912,
74.9475

■ 68.1159, 66.7912,
74.9475

■ 61.1681, 55.6717,
64.0711

■ 76.0462, 79.6293,
86.9067

■ 55.1574, 46.1889,
54.2416

■ 84.9905, 94.2462,
99.9748

■ 50.0434, 38.2671,
45.4270

■ 87.0891, 95.8960,
108.5274

■ 45.7801, 31.8212,
37.5920

■ 42.3177, 26.7579,
30.6989

■ 39.6004, 22.9731,
24.7071

■ 37.5651, 20.3478,
19.5726

■ 36.1367, 18.7401,
15.2457

■ 35.2451, 17.9424,
11.9101

Harmonies

Analogous

The Analogous color harmony consists of three colors that are next to each other on the color wheel.



67.0831, 66.7912, 81.4357



68.1159, 66.7912, 74.9475



67.8836, 66.7912, 68.2466

Triad

The Triadic color harmony groups three colors that are evenly spaced from another and form a triangle on the color wheel.



68.1159, 66.7912, 74.9475



61.8997, 66.7912, 61.0848



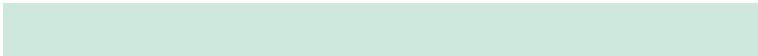
60.6000, 66.7912, 83.3225

Complementary

The Complementary color scheme is a pair of colors which are on the opposite of each other on the color wheel.



68.1159, 66.7912, 74.9475



67.7761, 76.2543, 80.2573

Split Complementary

Split-complementary colors differ from the complementary color scheme. The scheme consists of three colors, the original color and two neighbors of the complement color.



59.2769, 66.7912, 77.3936



68.1159, 66.7912, 74.9475



60.0141, 66.7912, 64.6574

Square

The Square scheme is like the rectangle color scheme, but the four colors are evenly spaced on the color wheel.



68.1159, 66.7912, 74.9475



64.2546, 66.7912, 60.5207



59.0651, 66.7912, 70.5454



62.7176, 66.7912, 86.4670

Rectangle

The Rectangle color scheme consists of four colors that form a rectangle on the color wheel.



68.1159, 66.7912, 74.9475



67.0447, 66.7912, 64.5404



59.0651, 66.7912, 70.5454



60.0498, 66.7912, 81.5722

Sweetspot

The Sweet Spot groups the original color and five complimentary colors.



68.1178, 66.7941, 74.9489



91.9275, 94.9236, 104.2563



67.0049, 65.9846, 85.5496



19.5018, 20.0344, 22.0540



0.0000, 0.0000, 0.0000



20.3446, 21.4041, 23.3091

Same Dimension

The Same Dimension uses a secret algorithm to generate beautiful new colors.



68.1178, 66.7941, 74.9489



82.3323, 79.4272, 89.6698



67.4668, 67.5104, 68.5099



14.6146, 14.4630, 16.1708



19.6247, 9.9841, 6.9187



1.4951, 0.7557, 0.7475

Inverse Universe

The Inverse Universe completely reimagines the original color for something new.



68.1178, 66.7941, 74.9489



82.3323, 79.4272, 89.6698



68.4576, 75.4091, 87.2921



14.6146, 14.4630, 16.1708



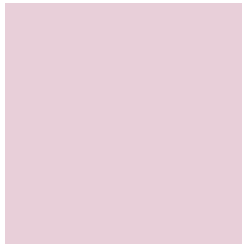
19.6247, 9.9841, 6.9187



1.4951, 0.7557, 0.7475

Previews

White Background



This preview shows how the XYZ color 68.1159, 66.7912, 74.9475 looks on a white background.

Color Contrast Check

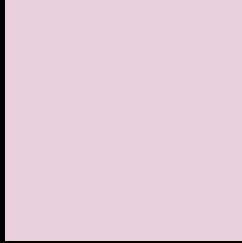
Large Text (above 18pt) WCAG AA × Fail

Any Text WCAG AA × Fail

Large Text (above 18pt) WCAG AAA × Fail

Any Text WCAG AAA × Fail

Black Background



This preview shows how the XYZ color 68.1159, 66.7912, 74.9475 looks on a black background.

Color Contrast Check

Large Text (above 18pt) WCAG AA ✓ Pass

Any Text WCAG AA ✓ Pass

Large Text (above 18pt) WCAG AAA ✓ Pass

Any Text WCAG AAA ✓ Pass

If you want to check with other color combinations, try the [Color Contrast Checker](#).

XYZ 68.1159, 66.7912, 74.9475

Background



This preview shows how black text looks on a background with the XYZ color 68.1159, 66.7912, 74.9475.



This preview shows how white text looks on a background with the XYZ color 68.1159, 66.7912,

74.9475.

Color Blindness Simulation

Color vision deficiency is a very complex topic, and I could not describe the different causes any better than Wikipedia does, so if you want to learn more, you should check out their [article about color blindness](#).

Dichromacy



Original Color

68.1159, 66.7912, 74.9475

Protanopia

64.4861, 66.7013, 77.1860

Deuteranopia

68.1159, 66.7912, 74.9475



Tritanopia

68.8604, 66.7402, 78.3600

Trichromacy



Original Color

68.1159, 66.7912, 74.9475

Protanomaly

65.6516, 66.5798, 76.4088

Deuteranomaly

68.1159, 66.7912, 74.9475

Tritanomaly

68.5938, 66.6336, 76.9564

Monochromacy



Original Color

68.1159, 66.7912, 74.9475

Achromatopsia

65.2694, 68.6685, 74.7800

Achromatomaly

66.3131, 68.0760, 74.6106

CSS Examples

Text

The CSS property to change the color of the text to XYZ 68.1159, 66.7912, 74.9475 is called "color". The color property can be set on classes, ids or directly on the HTML element.

This example shows how text in the color rgb(232, 207, 217) looks like.

```
.text, #text, p{  
    color:rgb(232, 207, 217)  
}
```

If you want to add a text shadow in that color use the text-shadow property, you can generate a text shadow directly with our [CSS Text Shadow Generator](#).

Here you see how black text with a 4 pixel rgb(232, 207, 217) colored shadow looks like.

```
.shadow{ text-shadow: 4px 4px 2px rgb(232, 207, 217) }
```

Border

The CSS property to change the border of an element to XYZ 68.1159, 66.7912, 74.9475 is called "border". The border property can be set on classes, ids or directly on the HTML element.

This example shows the color as border, it can be applied via the CSS property "border" or "border-color".

```
.border, #border, table{ border:4px solid rgb(232, 207, 217) }
```


If only the border color should be changed use the property `border-color`.

```
.border{ border-color:rgb(232, 207, 217) }
```

If you want to add a box shadow in that color use:

Here you see how a box with a 4 pixel `rgb(232, 207, 217)` colored shadow looks like.

```
.boxshadow{ -moz-box-shadow:4px 4px 4px  
4px rgb(232, 207, 217); -webkit-box-  
shadow:4px 4px 4px 4px rgb(232, 207, 217);  
box-shadow:4px 4px 4px 4px rgb(232, 207,  
217) }
```

Background

The CSS property to change the background color of an element to XYZ 68.1159, 66.7912, 74.9475 is called "background". The background property can be set on classes, ids or directly on the HTML element.

```
.background, #background, body{  
background: rgb(232, 207, 217) }
```

If only the background color should be changed can be used:

```
.background{ background-color: rgb(232,  
207, 217) }
```

This example shows the color as background, it is applied via the CSS property "background".

To optimize and compress your CSS code, you can use our [online CSS compressor and optimizer](#) based on csstidy. If you want to create a linear or radial gradient as background or border, check our [CSS Gradient Generator](#).

Hey! You found this booklet interesting? Support Converting Colors with the new Membership Option!

The pro membership hides all ads, plus gives you double the colors in the color bucket, and more awesome pro features!

[Learn more, Memberships starting at \\$2.50/m!](#)

**Follow me
on Twitter!**

@ConvertingColor