

Converting Colors

XYZ(67.9189, 66.5970, 70.1309)

Have a look what the booklet for
XYZ(67.9189, 66.5970, 70.1309)
contains.

XYZ(67.9651, 66.4579, 70.2183)	3
<i>Conversions</i>	4
<i>Details</i>	6
<i>Harmonies</i>	12
<i>Previews</i>	24
<i>Color Blindness Simulation</i>	28
<i>CSS Examples</i>	31

Color

**XYZ(67.9651, 66.4579,
70.2183)**

Conversions

Conversions Part 1

Format	Color
Hex	EBCED2
RGB	235, 206, 210
RGB Percent	92%, 81%, 82%
CMY	0.0784, 0.1921, 0.1765
CMYK	0.00, 0.12, 0.11, 0.08
HSL	352°, 42%, 86%
HSV	352°, 12%, 92%
XYZ	67.9651, 66.4579, 70.2183
YIQ	215.1270, 16.0000, 7.3920

Conversions

Conversions Part 2

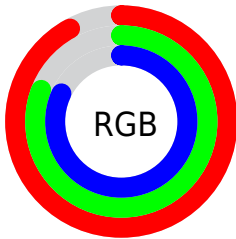
Format	Color
R _Y B	235, 206, 210
Decimal	15453906
CIE Lab	85.23, 10.78, 1.74
CIE LCh	85, 10.921, 9.170
Yxy	66.4579, 0.3321, 0.3248
Android (android.graphics.Color)	4293643986 (0xFFEBCED2)
YUV	215.1270, -2.5276, 17.4286
Hunter-Lab	81.5217, 6.1534, 5.9961

Details

The XYZ color **67.9651, 66.4579, 70.2183** is a light color, and the websafe version is hex **FFCCCC**. A complement of this color would be **69.5883, 78.3096, 87.0526**, and the grayscale version is **64.6878, 68.0567, 74.1137**.

A 20% lighter version of the original color is **95.0500, 100.0000, 108.9000**, and **35.8194, 34.4405, 36.2123** is the 20% darker color. If you saturate the color by 10%, you get **60.3588, 55.0320, 56.0073**, and if you desaturate by 10%, it is **76.7406, 79.7092, 86.3974**.

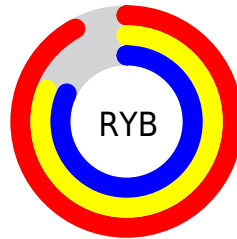
Distribution



Red (92%)

Green (81%)

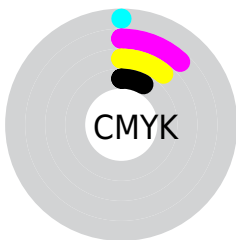
Blue (82%)



Red (92%)

Yellow (81%)

Blue (82%)

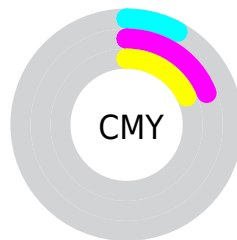


Cyan (0%)

Magenta (12%)

Yellow (11%)

Black (8%)



Cyan (8%)

Magenta (19%)

Yellow (18%)

Brightness & Saturation Gradients

These gradients show how the XYZ color 67.9651, 66.4579, 70.2183 changes by changing the brightness by 10 percent. The first figure shows a shift by +10% for each color and the second figure -10%.

Similar to the brightness gradients but the following saturation gradients show a change of the XYZ color 67.9651, 66.4579, 70.2183 by changing the saturation by 10% instead.

67.9651, 66.4579,
70.2183

67.9651, 66.4579,
70.2183

442.7510,
448.0127, 480.1259

50.1429, 48.6442,
51.2266

115.3444,
114.1433, 121.2040

35.7452, 34.3373,
36.0110

145.6322,
144.7838, 154.0352

24.4067, 23.1529,
24.1529

180.8060,
180.4687, 192.3166

15.7619, 14.7064,
15.2339

221.2310,
221.5823, 236.4667

9.4456, 8.6136,
8.8352

267.2727,
268.5092, 286.9042

5.0924, 4.4900,
4.5385

319.2963,

2.3369, 1.9513,

321.6336, 344.0475

1.9252

377.6673,
381.3400, 408.3153

■ 0.8134, 0.5789,
0.5087

■ 0.0000, 0.0000,
0.0000

■ 67.9651, 66.4579,
70.2183

■ 67.9651, 66.4579,
70.2183

■ 60.3588, 55.0320,
56.0073

■ 76.7406, 79.7092,
86.3974

■ 53.8668, 45.3430,
43.6850

■ 86.7261, 94.8516,
104.6115

■ 48.4381, 37.3085,
33.1730

■ 88.0713, 96.4023,
108.5734

■ 44.0155, 30.8356,
24.3854

■ 40.5365, 25.8225,
17.2295

■ 37.9313, 22.1553,
11.6039

■ 36.1204, 19.7028,
7.3955

■ 35.0093, 18.3078,
4.4751

■ 34.5273, 17.7687,
3.0041

Harmonies

Analogous

The Analogous color harmony consists of three colors that are next to each other on the color wheel.



67.7036, 66.4579, 77.2998



67.9651, 66.4579, 70.2183



66.9151, 66.4579, 64.1166

Triad

The Triadic color harmony groups three colors that are evenly spaced from another and form a triangle on the color wheel.



67.9651, 66.4579, 70.2183



60.2177, 66.4579, 62.3332



61.4946, 66.4579, 85.8135

Complementary

The Complementary color scheme is a pair of colors which are on the opposite of each other on the color wheel.



67.9651, 66.4579, 70.2183



69.5883, 78.3096, 87.0526

Split Complementary

Split-complementary colors differ from the complementary color scheme. The scheme consists of three colors, the original color and two neighbors of the complement color.



59.5601, 66.4579, 81.2842



67.9651, 66.4579, 70.2183



58.8363, 66.4579, 67.6378

Square

The Square scheme is like the rectangle color scheme, but the four colors are evenly spaced on the color wheel.



67.9651, 66.4579, 70.2183



62.4134, 66.4579, 59.7631



58.5988, 66.4579, 74.5476



63.9251, 66.4579, 86.6162

Rectangle

The Rectangle color scheme consists of four colors that form a rectangle on the color wheel.



67.9651, 66.4579, 70.2183



65.6282, 66.4579, 61.3132



58.5988, 66.4579, 74.5476



60.7666, 66.4579, 84.6629

Sweetspot

The Sweet Spot groups the original color and five complimentary colors.



67.9670, 66.4608, 70.2197



90.4981, 93.1103, 100.5567



69.9109, 67.0745, 87.8600



19.1927, 19.6609, 21.1969



0.0000, 0.0000, 0.0000



20.3446, 21.4041, 23.3091

Same Dimension

The Same Dimension uses a secret algorithm to generate beautiful new colors.



67.9670, 66.4608, 70.2197



79.1761, 76.0320, 79.6248



69.9979, 71.3095, 68.4709



15.1500, 15.0879, 16.0752



19.2427, 9.8998, 1.8136



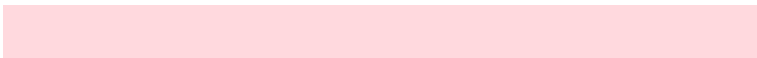
1.5377, 0.7880, 0.2830

Inverse Universe

The Inverse Universe completely reimagines the original color for something new.



67.9670, 66.4608, 70.2197



79.1761, 76.0320, 79.6248



67.3361, 72.8916, 89.1185



15.1500, 15.0879, 16.0752



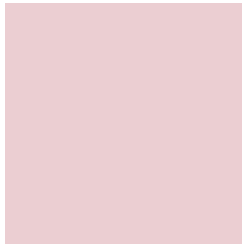
19.2427, 9.8998, 1.8136



1.5377, 0.7880, 0.2830

Previews

White Background



This preview shows how the XYZ color 67.9651, 66.4579, 70.2183 looks on a white background.

Color Contrast Check

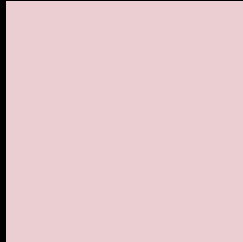
Large Text (above 18pt) WCAG AA × Fail

Any Text WCAG AA × Fail

Large Text (above 18pt) WCAG AAA × Fail

Any Text WCAG AAA × Fail

Black Background



This preview shows how the XYZ color 67.9651, 66.4579, 70.2183 looks on a black background.

Color Contrast Check

Large Text (above 18pt) WCAG AA ✓ Pass

Any Text WCAG AA ✓ Pass

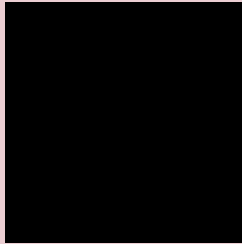
Large Text (above 18pt) WCAG AAA ✓ Pass

Any Text WCAG AAA ✓ Pass

If you want to check with other color combinations, try the [Color Contrast Checker](#).

XYZ 67.9651, 66.4579, 70.2183

Background



This preview shows how black text looks on a background with the XYZ color 67.9651, 66.4579, 70.2183.



This preview shows how white text looks on a background with the XYZ color 67.9651, 66.4579,

Color Blindness Simulation

Color vision deficiency is a very complex topic, and I could not describe the different causes any better than Wikipedia does, so if you want to learn more, you should check out their [article about color blindness](#).

Dichromacy



Original Color

67.9651, 66.4579, 70.2183

Protanopia

64.1690, 66.6428, 72.4321

Deuteranopia

67.9651, 66.4579, 70.2183



Tritanopia

69.1032, 66.1859, 76.8432

Trichromacy



Original Color

67.9651, 66.4579, 70.2183

Protanomaly

65.6707, 66.6939, 71.6994

Deuteranomaly

67.9651, 66.4579, 70.2183

Tritanomaly

68.8181, 66.4534, 74.1654

Monochromacy



Original Color

67.9651, 66.4579, 70.2183

Achromatopsia

64.5905, 67.9542, 74.0022

Achromatomaly

65.6779, 67.4207, 72.5027

CSS Examples

Text

The CSS property to change the color of the text to XYZ 67.9651, 66.4579, 70.2183 is called "color". The color property can be set on classes, ids or directly on the HTML element.

This example shows how text in the color `rgb(235, 206, 210)` looks like.

```
.text, #text, p{  
    color:rgb(235, 206, 210)  
}
```

If you want to add a text shadow in that color use the text-shadow property, you can generate a text shadow directly with our [CSS Text Shadow Generator](#).

Here you see how black text with a 4 pixel rgb(235, 206, 210) colored shadow looks like.

```
.shadow{ text-shadow: 4px 4px 2px rgb(235, 206, 210) }
```

Border

The CSS property to change the border of an element to XYZ 67.9651, 66.4579, 70.2183 is called "border". The border property can be set on classes, ids or directly on the HTML element.

This example shows the color as border, it can be applied via the CSS property "border" or "border-color".

```
.border, #border, table{ border:4px solid rgb(235, 206, 210) }
```


If only the border color should be changed use the property `border-color`.

```
.border{ border-color:rgb(235, 206, 210) }
```

If you want to add a box shadow in that color use:

Here you see how a box with a 4 pixel `rgb(235, 206, 210)` colored shadow looks like.

```
.boxshadow{ -moz-box-shadow:4px 4px 4px  
4px rgb(235, 206, 210); -webkit-box-  
shadow:4px 4px 4px 4px rgb(235, 206, 210);  
box-shadow:4px 4px 4px 4px rgb(235, 206,  
210) }
```

Background

The CSS property to change the background color of an element to XYZ 67.9651, 66.4579, 70.2183 is called "background". The background property can be set on classes, ids or directly on the HTML element.

```
.background, #background, body{  
background: rgb(235, 206, 210) }
```

If only the background color should be changed can be used:

```
.background{ background-color: rgb(235,  
206, 210) }
```

This example shows the color as background, it is applied via the CSS property "background".

To optimize and compress your CSS code, you can use our [online CSS compressor and optimizer](#) based on csstidy. If you want to create a linear or radial gradient as background or border, check our [CSS Gradient Generator](#).

Hey! You found this booklet interesting? Support Converting Colors with the new Membership Option!

The pro membership hides all ads, plus gives you double the colors in the color bucket, and more awesome pro features!

[Learn more, Memberships starting at \\$2.50/m!](#)

**Follow me
on Twitter!**

@ConvertingColor